



INSTALLATION AND OPERATION MANUAL

EZ-HK1 Stereo Audio Hum Killer



RDL EZ Series products provide the highest level of value to A/V professionals and A/V users who demand professional quality. For long-term performance, quality and value, you have made the EZ choice. EZ products are made in the USA by RDL, the inventor of application-specific modules bringing decades of experience as the world's leading manufacturer of high-reliability performance products to the A/V industry. Visit the RDL website for hundreds of professional A/V products made in the USA by RDL.



RDL[®]
Radio Design Labs

www.rdlnet.com

Decades of Performance, Quality and Value

RDL • 659 6th Street • Prescott, AZ • USA 86301 • Sales: 800-281-2683 • 928-443-9391
Tech Support: 800-933-1780 • 928-778-3554 • RDL Europe Sales & Support: (31) 20-6238-983

EZ-HK1

Stereo Audio Hum Killer

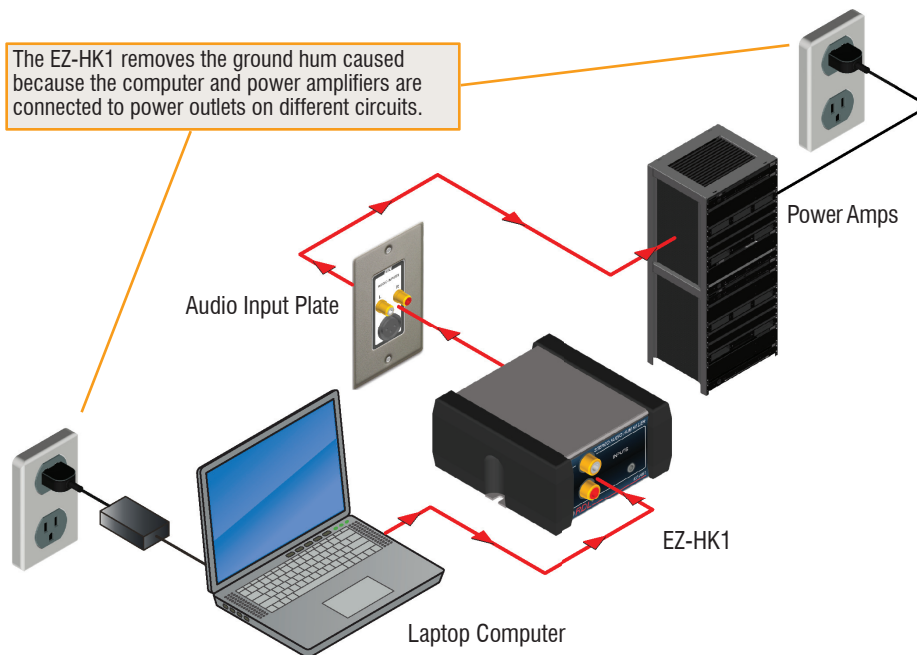
- Audio Ground-Loop Hum Elimination
- Unbalanced Stereo Galvanic Isolation
- Inputs and Outputs on RCA and Mini Jacks
- Switch-Selectable Ground Lift for Output Jacks
- Portable Use or Permanent Installation

The EZ-HK1 is a stereo audio transformer isolation module for use with unbalanced, high impedance audio inputs. Input and output connections are provided on gold-plated RCA jacks.

The shield connection of each INPUT jack is electrically isolated from the case and from the output ground. The shield connection of each OUTPUT jack is connected to the case shield through a rear-panel ground-lift switch.

The EZ-HK1 eliminates hum due to ground loops when it is installed between an unbalanced audio source, such as a computer, CD player, cassette player or other consumer audio product, and the input of a grounded amplifier in an audio system.

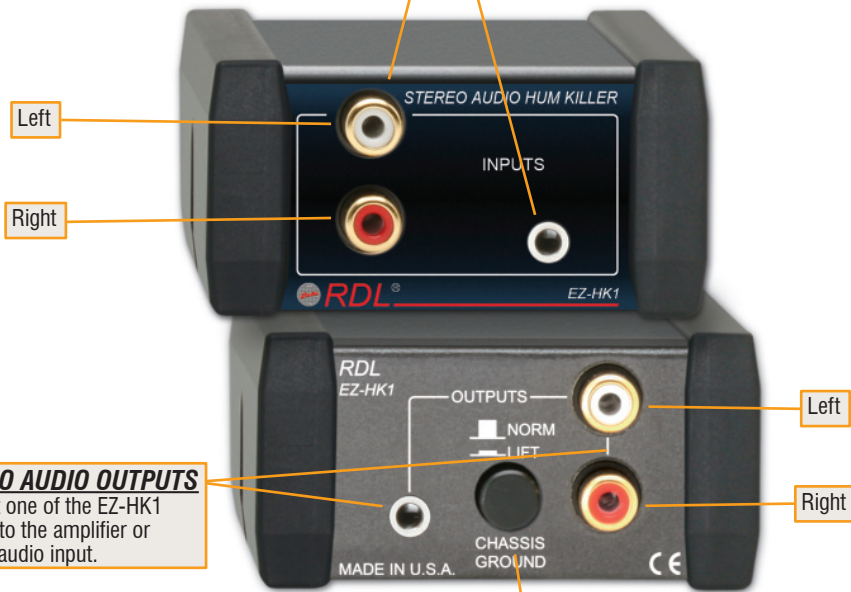
TYPICAL APPLICATION



www.rdlnet.com . . . www.rdlez.com

STEREO AUDIO INPUTS

Connect the output from an audio source to the RCA jacks **or** to the stereo Mini-jack.
Do not connect audio to both inputs at the same time.



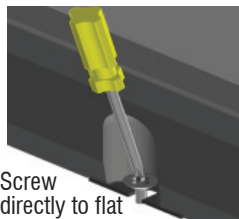
STEREO AUDIO OUTPUTS

Connect one of the EZ-HK1 outputs to the amplifier or system audio input.

GROUND-LIFT SWITCH

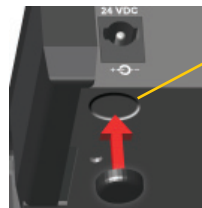
The audio output cable shields are connected to the EZ-HK1 chassis when the switch is in the NORM position. In the unlikely event that the EZ-HK1 chassis is mounted to equipment with a different ground from the equipment the EZ-HK1 output is feeding, a ground loop could be produced. This ground loop is eliminated by setting the switch to the LIFT position.

FIXED MOUNTING



Screw directly to flat surface without installing rubber feet.

RUBBER FEET ATTACHMENT



Recess
Bottom View of chassis

Peel backing and stick the 4 rubber feet to chassis in recesses provided.

SELECTED MOUNTING ACCESSORIES Complete accessory listing available at: rdlez.com

EZ-RA6

Rack Adapter for 6 Increments of 1/6 Rack Width



EZ-CC6

Component Chassis for 6 Increments of 1/6 Rack Width



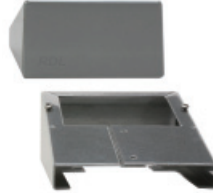
EZ-SMB1

Surface Mount Bezel for 1/6 Rack Width Products



EZ-DC1

Desktop Chassis 1/6 Rack Width



EZ-UCB2

Under-Counter Brackets 1/6 or 1/3 Rack Width



EZ-SD1

Storage Drawer 1/6 Rack Width

Use In Place of Filler Panel
Holds Adapters and Cables
Mounts in EZ-CC6 and EZ-RA6



TYPICAL PERFORMANCE

Inputs (2):	Stereo on RCA Phono jacks, Stereo Mini-jack, -10 dBV nominal, ground-isolated
Input Impedance:	10 k Ω
Outputs (2):	Stereo on RCA Phono jacks, Stereo Mini-jack, -10 dBV nominal
Output Impedance:	10 k Ω
Output Ground Isolation:	Switch-selectable
Gain:	Unity nominal (passive circuit)
Frequency Response:	20 Hz to 20 kHz (+/- 1 dB)
Total Harmonic Distortion:	< 0.05% (1 kHz)
Crosstalk:	< -75 dB (20 Hz to 10 kHz), < -65 dB (10 kHz to 20 kHz)
Warranty:	3 Years; contact RDL technical support department for assistance
Case dimensions:	2.9" (7.4 cm)W x 3" (7.6 cm)D
Mounting size:	1/6 rack width

CE

891-1655