

# In-Wall Home Theater Power Management

## MIW-POWER-PRO-PFP

Provides Safe and Noise Filtered Power to remote Plasma Screens, LCD's and Ceiling Projectors

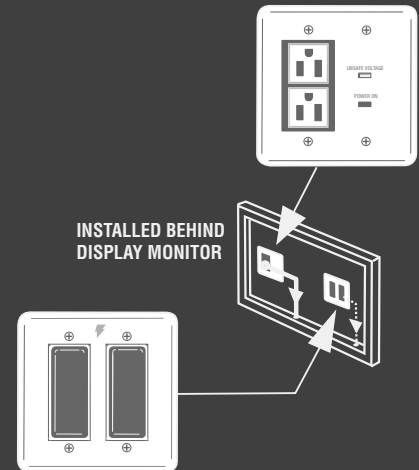
**T**wo recessed AC receptacles deliver power to remotely located devices. Enlarged faceplate (4.5" x 4.5") accommodates oversized wall cutouts. Line fault LED to indicate an overvoltage condition with the power to the MIW-POWER -PRO-PFP. Power ON LED indicates power is being supplied to the MIW-POWER-PRO-PFP outlets.

Voltage monitoring Circuit protects equipment against prolonged over voltages by disconnecting the power and reconnecting it when safe power returns.

May be used in conjunction with MIW-DUAL-SIGNAL BAY PFP and signal line modules (sold separately).

3 Year Product Warranty and Limited Lifetime Connected Equipment Protection Policy when properly installed using MIW-DUAL-SIGNAL BAY PFP and appropriate MIW Module (both sold separately).

May be used in conjunction in conjunction with MIW-DUAL SIGNAL BAY PFP (sold separately).



**MIW-DUAL SIGNAL BAY-PFP** (sold separately).  
(modules sold separately)

Contact PFP for information.

### Power to Remotely Located Devices



MODEL: MIW-POWER-PRO-PFP

#### AC CIRCUIT

AC Outlets, Total..... 2  
Line Voltage..... 120V, 60Hz  
Total Current Capacity..... 15A  
Voltage Protection Rating  
(UL1449 3rd Edition, 3,000A):.....500V  
Protection Modes..... L-N, L-G, N-G  
Energy Dissipation.....546 Joules  
Peak Impulse Current.....32,500 Amps  
Catastrophic Surge Circuit.....Yes  
Thermal Fusing.....Yes

#### VOLTAGE MONITORING CIRCUIT

Over-voltage Shutoff.....142 VAC ± 5 VAC  
Design and specifications subject to change without  
notice due to product improvement.

#### POWER OUTLET FACEPLATE

Over-voltage Shutoff..... 142 VAC ± 5 VAC  
Noise Filtration..... Level 1  
Signal Line Protection.....Not Included/Modules  
Sold Separatly

#### SHIPPING DIMENSIONS, WEIGHTS & UPC CODES

Single Pack Dimensions..... 4.5"W x 2"D x 4.5"H  
Single Pack Weight..... 2 lbs.  
Single Unit UPC..... 0 50616 00840 2  
Master Pack Dimensions..... 11"W x 7"D x 11"H  
Master Pack Quantity..... 8  
Single Pack Weight.....16 lbs.  
Single Unit UPC.....5 00 50616 00840 7

