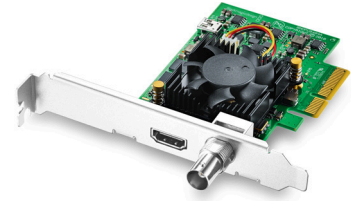


DeckLink Mini Monitor 4K



DeckLink Mini Monitor 4K is a low profile PCI Express playback card, featuring 6G-SDI and the latest HDMI 2.0a connections so you can monitor all formats up to 2160p30 from your computer! The SDI and HDMI outputs let you connect to any television or monitor and automatically detect and switch between all video formats. You even get high dynamic range playback and metadata over HDMI. You can even develop your own custom playback solutions using the Blackmagic Desktop Video SDK for Mac OS, Windows and Linux! Includes two PCI Express shields for both full height and low profile slots.

\$195

Connections

SDI Video Outputs

1 x 10 bit SD/HD/Ultra HD switchable.

SDI Audio Outputs

16 channels embedded in SD, HD, Ultra HD.

HDMI Video Outputs

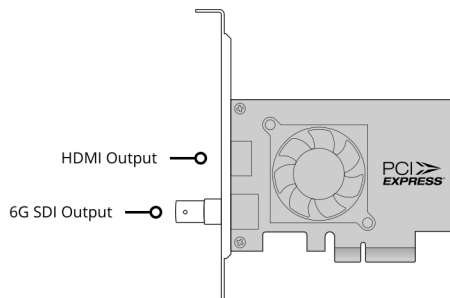
1 x HDMI 2.0a connector.

HDMI Audio Outputs

8 Channels embedded in SD, HD, Ultra HD.

Computer Interface

PCI Express 4 lane generation 2, compatible with 4, 8 and 16 lane PCI Express slots.



Supported Codecs

AVC-Intra, AVCHD, Canon XF MPEG2,
Digital SLR, DV-NTSC, DV-PAL,
DVCPRO50, DVCPROHD, DPX, HDV,
XDCAM EX, XDCAM HD, XDCAM
HD422, DNxHR & DNxHD, Apple
ProRes 4444, Apple ProRes 422 HQ,
Apple ProRes 422, Apple ProRes LT,
Apple ProRes 422 Proxy,
Uncompressed 8-bit 4:2:2,
Uncompressed 10-bit 4:2:2.

Software

Software Included

Media Express, Disk Speed Test,
LiveKey, Blackmagic Desktop Video
Utility and Blackmagic driver on Mac
OS and Windows. Media Express,
Blackmagic Desktop Video Utility and
Blackmagic driver on Linux.

Internal Software Upgrade

Firmware built into software driver.
Loaded at system start or via updater
software.

Physical Installation

PCI Express 4 lane generation 2,
compatible with 4, 8 and 16 lane PCI
Express slots on Mac OS, Windows
and Linux. Mac OS systems require a
Mac Pro computer with PCI Express
slots. Please check the Support pages
to see the full system requirements.

Software Applications



DaVinci Resolve



Adobe Premiere Pro CC



Avid Media Composer



Adobe Photoshop CC

Other supported applications include: The Foundry Nuke, Grass Valley Edius, Sony Catalyst Production Suite, Tools On Air Just: Play & Live & In, Softron MovieRecorder & MReplay, Adobe Flash Media Live Encoder, Telestream Wirecast, Livestream Producer, Resolume Arena, Magix Vegas Pro & Movie Edit Pro Premium, Corel VideoStudio Pro, CyberLink PowerDirector, Vidblaster X & Studio & Broadcast, Uniplay One & CG, CasparCG Server, Magicsoft CG, Xsplit Broadcaster, Imagine Communications Velocity & InfoCaster, DevTek Easy Media Suite, Metus Ingest, Boinx Software MimoLive, Cinegy Capture Pro, vMix Live, Renewed Vision ProPresenter, Ventuz Director, Class X Liveboard & Coral CG, Glookast Capturer, Open Broadcaster Software Studio, Nautilus NEMO3D, Burst Video WebClip2Go & [REC]Marker.

Video Standards

SD Video Standards

525i59.94 NTSC, 625i50 PAL

HD Video Standards

720p50, 720p59.94, 720p60
1080p23.98, 1080p24, 1080p25,
1080p29.97, 1080p30, 1080p50,
1080p59.94, 1080p60
1080PsF23.98, 1080PsF24,
1080PsF25, 1080PsF29.97, 1080PsF30
1080i50, 1080i59.94, 1080i60

Ultra HD Video Standards

2160p23.98, 2160p24, 2160p25,
2160p29.97, 2160p30

4K DCI Video Standards

4K DCI 23.98p, 4K DCI 24p, 4K DCI
25p*

*SDI Only

2K Video Standards (SDI Only)

2K DCI 23.98p, 2K DCI 24p, 2K DCI
25p
2K DCI 23.98PsF, 2K DCI 24PsF, 2K
DCI F25PsF

SDI Compliance

SMPTE 259M, SMPTE 292M, SMPTE
296M, SMPTE 372M, SMPTE 425M,
SMPTE 2081, ITU-R BT.656 and ITU-R
BT.601.

SDI Metadata Support

RP 188/SMPTE 12M-2 and closed
captioning.

Audio Sampling

Television standard sample rate of 48
kHz and 24 bit.

SDI Color Precision

8, 10, 12-bit RGB 4:4:4 in all modes up
to 1080p60, and 8, 10-bit YUV 4:2:2 in
all modes.

SDI Video Sampling

4:4:4 & 4:2:2

Color Space

REC 601, REC 709.

HDMI Video Sampling

4:4:4, 4:2:2 & 4:2:0

HDMI Configuration

HDMI 2.0a supports Deep Color and
HDR. Automatically configures to
connected display.

HDMI Resolution

Pixel for pixel HD resolution output to
connected device.

HDMI Color Precision

Up to 12-bit (Deep Color)

Multiple Rate Support

HDMI and SDI video connections are
switchable between SD/HD/2K and
4K.

Processing**HD to SD Down Conversion**

Software based down conversion
during video playback.

HD Cross Conversion

Software based cross conversion
from 720p to 1080HD on playback.

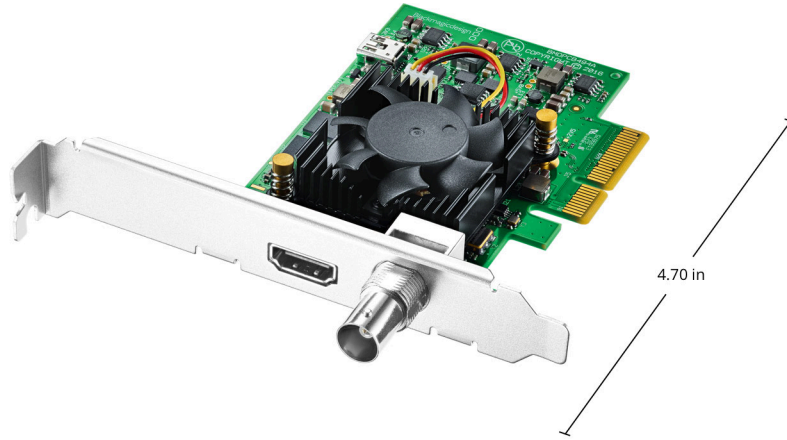
Colorspace Conversion

Hardware based real time.

Real Time Effects

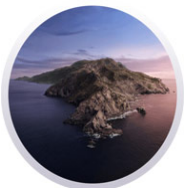
DaVinci Resolve, Final Cut Pro X
internal effects. Adobe Premiere Pro
CC Mercury Playback Engine effects.
Avid Media Composer internal
effects.

Physical Specifications



3.17 oz

Operating Systems



Mac 10.14 Mojave,
Mac 10.15 Catalina or later.



Windows 7, 8.1 and 10, all 64-bit.



Linux

Power Requirements

Power Consumption

10 Watts

EMC Certifications

FCC, CE and C-Tick.

Environmental Specifications

Operating Temperature

5° to 40° C (32° to 104° F)

Storage Temperature

-20° to 45° C (-4° to 113° F)

Relative Humidity

0% to 90% non-condensing

What's Included

DeckLink Mini Monitor 4K
Low profile slot bracket
SD card with software and manual

Warranty

3 Year Limited Manufacturer's Warranty.

All items on this website are copyright Blackmagic Design Pty. Ltd. 2019, all rights reserved.
All trademarks are property of their respective owners. MSRP includes duties, but excludes sales tax and shipping costs.
This website uses remarketing services to advertise on third party websites to previous visitors to our site.
You can opt out at any time by changing cookie settings. [Privacy Policy](#)

Blackmagic Design Authorized Reseller