

Saphyr - H

Ref. SPX450-H



ANALOG WAY®
Pioneer in Analog, Leader in Digital

Ten-Input Hi-Resolution Mixer & Seamless Switcher with Four HDBaseT™ Inputs and Two Mirrored HDMI / HDBaseT™ Outputs



Flexibility and Versatile Connectivity

The Saphyr - H is a powerful multi-layer hi-resolution mixer and seamless presentation switcher featuring 10 seamless inputs and 16 input connectors (four HDMI, two DVI, four 3G-SDI, four HDBaseT™ and two universal analog). The Saphyr - H offers two outputs with mirrored HDMI and HDBaseT™ connectors that can be configured either as Preview & Program or as two independent program outputs (native matrix mode). It also supports advanced audio inputs and outputs functionalities and includes 3G-SDI and analog outputs useable as video output or Program clone.

Quality without Compromise

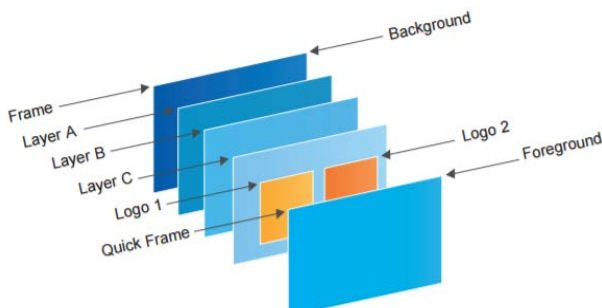
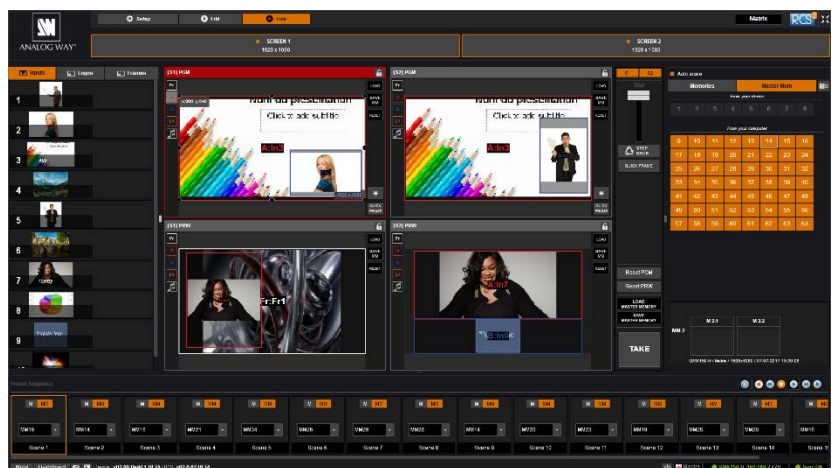
Based on the extremely reliable and cost-effective MIDRA™ platform, the Saphyr - H offers ultra-low latency image processing, uncompromising video quality, true seamless switching and advanced video effects for elegant AV presentations, which makes it an ideal solution for live events, fixed installations, houses of worship and educational facilities.

Simplified Integration with direct HDBaseT™ Compatibility

The Saphyr - H has been designed using HDBaseT™ Alliance specifications, ensuring interoperability with other HDBaseT™ certified products. It features four HDBaseT™ inputs with embedded audio, Ethernet and PoE+ support (for 2 ports). The Saphyr - H also includes two HDBaseT™ outputs that can deliver digital video and embedded audio, with Ethernet pass through plus bidirectional RS-232 and IR signals up to 330 feet (100 meters) over a shielded CAT 5e/6 cable directly to HDBaseT™ enabled displays. This allows reducing installation cost and even greater flexibility for your integration requirements.

Powerful and Flexible Control Options

The Saphyr - H has been designed to be entirely operated from the easy-to-use front panel. Each MIDRA™ model can also be easily controlled using the intuitive drag & drop user software interface: the RCS². The Saphyr - H offers IP (Ethernet) control via a standard TCP/IP socket connection and an RS-232 serial interface supported by all major third-party control systems. Additionally, the Saphyr - H can be controlled by a comprehensive range of remote control panel options such as the RK-350 keypad or the Shot Box².



Saphyr - H at a glance

- ▶ Based on the Midra™ platform
- ▶ 2 operating modes: seamless switcher & native matrix
- ▶ Heavy-duty design for incredible reliability
- ▶ High performance video processing
- ▶ HDBaseT™ inputs and outputs
- ▶ Advanced audio management
- ▶ User-friendly and intuitive graphic interface

	QuickMatrix ² - H	Pulse ² - H	SmartMatrix ² - H	Saphyr - H
Operating modes	1	2	1	2
Inputs (HDBaseT™)	8 (2)	8 (2)	10 (4)	10 (4)
Outputs (HDBaseT™)	2 (2)	2 (2)	2 (2)	2 (2)
Video Output	1	1	1	1
Transitions & Effects	+	+	++	+
Live Layers (up to)	1	2	2	3

KEY FEATURES

MIDRA™ platform: uncompromised processing and manufacturing quality

2 operating modes: Seamless Mixer and Native Matrix

10 seamless inputs

Capability to switch between any input plugs (16 input plugs available)

2 outputs: Program/Output#1 and Preview/Output#2

Video output: Digital SD/HD TV (3G-SDI) and Analog SD TV (CVBS, YPbPr)

HDBaseT™ plugs:

- 4 inputs with support of video, embedded audio and Ethernet pass-through, among which 2 have PoE+ functionalities (48V; 30W)
- 2 outputs with support of video, embedded audio, Ethernet, bidirectional RS232 and IR
- Point-to-point transmission up to 330ft (100m) with CAT 5e/6 cables
- HDMI and HDBaseT™ outputs can output simultaneously

High performance video processing:

- Very fast seamless switching
- Ultra-low latency processing
- Chroma/Luma Key and Titling
- Ability to modify the Program in real time without using the Preview
- Custom output formats
- Advanced de-interlacing processing
- New freeze features (input/layer/screen)

Advanced Audio Management:

- Embed/De-Embed audio on all plugs
- Breakaway Audio mode
- Top Layer mode
- Balanced Stereo audio on all outputs
- Fast Routing mode
- Delay compensation (manual up to 80ms or auto)

Enhanced Layer Processing:

- Up to 3 layers on Background Frame
- Live layers fully resizable
- Pan & Zoom resizing up to 1000%
- Dynamic layers (Moving from A to B) with Flying, Zooming or Cropping functions
- Border & Shadow
- Transitions: Fade, Cut, Wipe, Slide
- Open/Close animation

Quick Frame mode: Instantly display a stored frame above all layers

Internal test patterns: Select between 9 available test patterns

EDID Management: Management on 6 inputs; Ability to read & display outputs EDIDs

HDCP Compliant: Enable/Disable the HDCP (*if the display is not compliant, the output image could be disabled*)

Memories:

- 8 Memory Presets per output and up to 64 via RCS²
- 8 Full frames
- 8 logo Memories (including one animated Logo)

RCS²: Remote Control Software for Windows and Mac

Dimension (in Rack Units - RU)

- ▶ 2RU

Dimensions (without rack ears and rear rack mount)

- ▶ W 17.28" x H 3.46" x D 17.71"
- ▶ L 439.5 mm x H 88 mm x P 450 mm

Dimensions (with handles)

- ▶ W 19" x H 3.46" x D 18.70"
- ▶ L 482.1 mm x H 88 mm x P 475 mm

Weight without accessories

- ▶ 7.5 kg / 16.31 lbs

Shipping weight accessories included

- ▶ 10.5 kg / 23.15 lbs

Operating conditions

- ▶ Temperature: 0 to 40°C (32 to 104°F)
- ▶ Humidity: 10% to 80%, non-condensing

Thermal dissipation

- ▶ 546 BTU/hr

Noise (@1,6m height @25°C)

- ▶ Front: 41 DBa@1m
- ▶ Rear: 41 DBa@1m

Warranty

3-year warranty on parts and labor back to factory

Power Supply

- ▶ 100-240 VAC 50/60Hz 3.2A
- ▶ Fuse cartridge F4AH 250VAC 5x20mm
- ▶ Max consumption: 160 W (with 2x24 W PoE)

Safety Compliance

- ▶ IEC/UL/EN 60950-1, CSA22.2#60950-1, ETL Listed (US & Canada)

Supplied with

- ▶ 1 x Power supply cord
- ▶ 1 x Pair of front handles + screws
- ▶ 1 x Ethernet cross cable (for device control)
- ▶ 8 x MCO 5 pin connectors
- ▶ 1 x Quick Start Guide including safety instructions*

 Specifications subject to change without prior notice

INPUTS

10 seamless inputs, 16 total input plugs

2 x DVI-D up to 2048x1152@60Hz

4 x HDMI up to 2048x1152@60Hz

2 x Universal Analog up to 2048x1152@60Hz

4 x 3G/HD/SD-SDI up to 2K@60Hz

4 x HDBaseT™ up to 2048x1152@60Hz

OUTPUTS

2 outputs with 2 plugs per output

2 x HDMI up to 2048x1152@60Hz

2 x HDBaseT™ up to 2048x1152@60Hz

1 x 3G-SDI up to 2K@60Hz, useable as video output or program clone

4 x BNC for Analog SD TV (CVBS, YPbPr) up to 625/576i

AUDIO

5-pin MCO connectors: 4 for analog audio inputs and 2 for analog audio outputs

4 RCA connectors: 2 for S/PDIF audio inputs and 2 for S/PDIF audio outputs

Input:

DVI (as HDMI) / HDMI / SDI Audio de-embedded

4 x Audio stereo Analog (Balanced/Unbalanced)

2 x S/PDIF (AES-3id compatible)

Output:

HDMI / SDI Audio embedded

2 x Audio stereo Analog (Balanced/Unbalanced)

2 x S/PDIF (AES-3id compatible)

STANDARDS

SMPTE: ST 259:2008, ST 260:1999, ST 274:2008, ST 292-1:2012, ST 296:2012, ST 424:2012, ST 428-19:2010

VESA: GTF1.1, CVT 1.1, DMT1.0 rev.12

OPERATING MODES

Mixer mode:

Seamless switching with full preview with 1 layer

1 Title on Live Background

Up to 2 Layers on Live Background

Up to 3 Layers on Still Background

Matrix mode:

Seamless switching

1 Title on Live Background

1 Layer on Live or Still Background

CONTROL

Full-featured Front Panel

RCS²: Remote Control Software with intuitive GUI

Orchestra²: Intuitive and ergonomic Controller

RK-350: Remote Keypad

SB80-2: Shot Box²

AMX/Crestron drivers

OTHER FEATURES

DB9: RS232 for remote control

RJ45: Ethernet connection



*All technical specifications and videos are available on analogway.com

Analog Way World HQ - Tel: +33 (0)1 81 89 08 60 | saleseuro@analogway.com

Analog Way Americas HQ - Tel: +1 678 487 6644 | salesusa@analogway.com

Analog Way Asia Pacific HQ - Tel: +65 62 92 58 00 | sales@analogwayasia.com

Connect with us on

