

HUMAN BODY TEMPERATURE CHECK SOLUTION

BN9036TH



Temperature measurement



Early detection



Quick reaction



BODY DETECTION UP TO 30 TARGETS



Preventive isolation



Prevention of diffusion



Creation of reports

Thermal Camera

Detector Type	Uncooled IRFPA Microbolometer
Effective pixels	400 (H) x 300 (V)
Pixel size	17µm
Thermal Sensitivity (NETD)	40mK@F.1.0, 300K
Spectral range	8-14µm
Image setting	Polarity LUT / DVE / Mirror / FCC / 3D DNR / Brightness / Contrast / ROI
Color palettes	White, warm / black, warm / cold, curve / rainbow up to 17 ways

Thermal Lens

Lens Type	Fixed
Focus Control	Manual
Focal length	8mm
F No.	F 1.0
Viewing angle	H: 46° V: 35°

Visible Camera

Image Sensor	1/2.8" Sony CMOS
Effective resolution	1920(H)x1080(V)
Shutter speed	1/5 ~ 1/64,000s
WDR	TWDR 120 dB
Min. Illumination	Color: 0.01Lux @(F1.2, AGC ON), B/W: 0.001Lux @(F1.2, AGC ON)
S/N Ratio	> 55dB
Focal length	2.7 ~ 12mm
Max Aperture	F1.6 ~ F2.9
Angle of View	105° ~ 32°
Focus control	Motorized

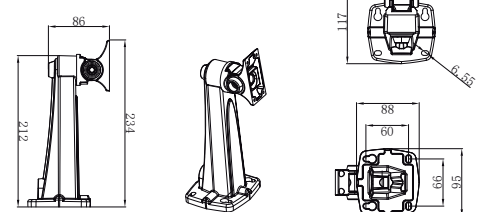
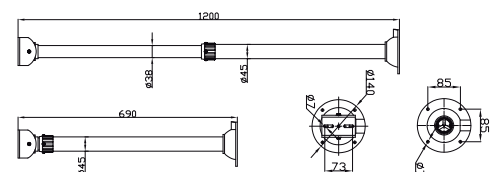
Video and Audio

Compression	H.265, H.264, MJPEG Main Stream: Thermal: D1 @ 25 / 30fps Visible: 1920 x 1080/1280 x 720 @ 25 / 30fps Sub Stream: Thermal: CIF @ 25 / 30fps Visible: D1 / VGA / 640 x 360 / CIF / QCIF / QVGA @ 25 / 30fps
Frame Rate	
Bit Rate control	CBR/VBR
Bit Rate	Thermal: 100Kbps ~ 6Mbps Visible: main stream: 500Kbps ~ 10Mbps; Sub stream: 100Kbps ~ 6Kbps
Region of interest (ROI)	Off / On (8 Zones, Rectangles)
Digital zoom	16x
Mirror	Support
Defog	Support
Motion Detection	Support
Privacy Masking	Off / On (4 Area, Rectangles)
DVE Image Enhance	Support
Audio compression	G.711, AMR, RAW_PCM (Optional)


Key Features

- On-board temp-detection algorithm
- One IP address two channels
- Effective pixels 400x300
- Sensitivity 40mK
- Thermal: 8mm Fixed lens, Visible: 2.7-12mm motorized lens
- Accuracy 0.3°C
- Body detection, up to 30 Targets
- Response Time 30ms
- 17 color control

Accessory included
BLACKBODY

Accesorios opcionales
**BE9036THWM
FOR THE WALL MOUNT**

**BE9036THPM
PENDENT MOUNT**


Intelligence

Smart functions	Motion detection, Alarm disc, Alarm I/O, Temperature alarm
IVS	Body detection, Perimeter, Single virtual perimeter, double virtual perimeter, Removed / abandoned objects

Temperature Detection

Detection Mode	Body temperature detection
Detection Preset	Max 30 goals
Alarm detection	Temperature overshoot, Temperature difference $\pm 0.3^{\circ}\text{C}$ (Emission rate, distance, ambient temperature, etc.) with blackbody. Detection Distance: 3~5m (4m recommended). Working Environment: Avoid the interference of wind, sunshine, high temperature and reflective objects, indoor is recommended
Accuracy	
Response time	$\leq 30\text{ms}$
Theory of temperature measurement range	$-20^{\circ}\text{C} \sim 60^{\circ}\text{C}$ ($-4^{\circ}\text{F} \sim 140^{\circ}\text{F}$)
Temperature display mode	Target temperature $> 5^{\circ}\text{C}$, Absolute temperature value; Target temperature $\leq 5^{\circ}\text{C}$, relative temperature value (temperature difference $\text{DEV} = \text{highest} - \text{average value}$)
Detection distance	Temperature detection distance between 3m to 5m

Network

Ethernet	RJ-45 (10/100Base-T)
Protocols	IPv4 / IPv6, HTTP, RTSP / RTP / RTCP, TCP / UDP, DHCP, DNS, PPPOE, SMTP, SIP, 802.1x
Interoperability	ONVIF, CGI, SDK
Maximum number of connections	10 users
Edge Storage	Local PC for instant recording 128GB Micro SD card
Web Viewer	<IE11, Chrome, Firefox
Web languages	English, Chinese, Polish, Italian, Portuguese, Spanish, Russian, French, Czech, Hungarian

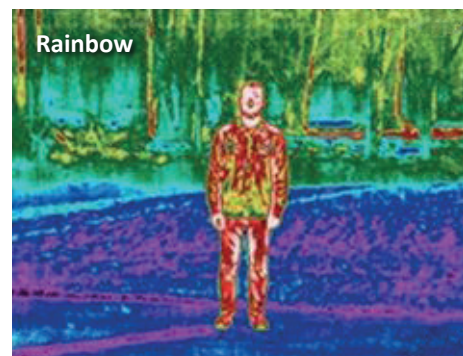
Interface

Ethernet	1 Ethernet (10/100 Base-T) RJ-45
Audio interface	1xI / 1xO
Alarms	2xI / 2xO
RS485	Support
Manual reset	Support

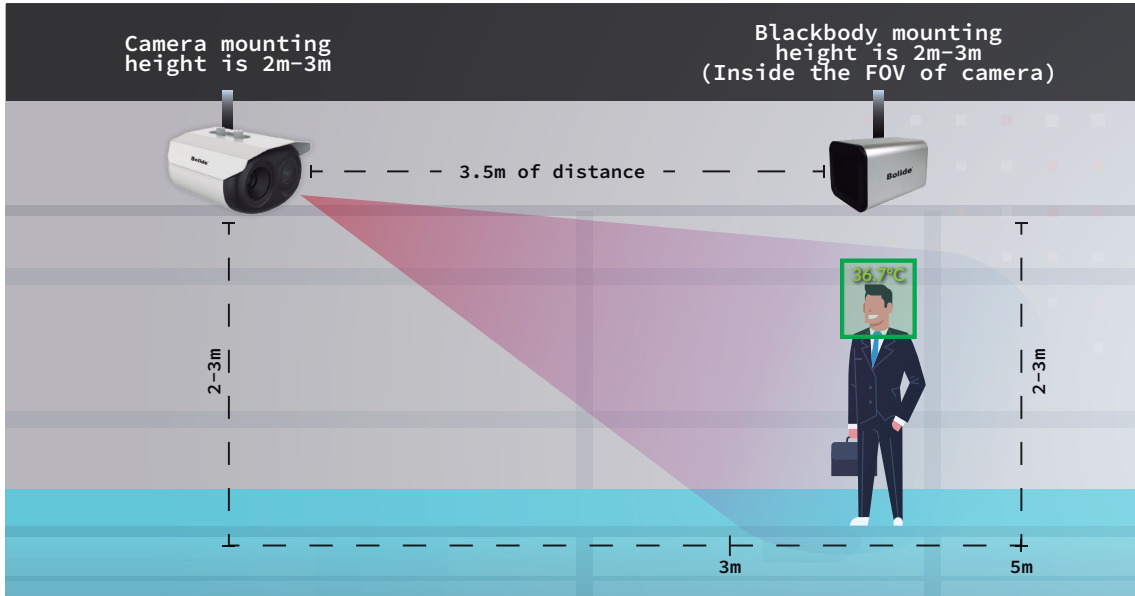
General

Power Supply	12Vcc/PoE (IEEE 802.3af)
Consumption	Max 10W
Operating temperatures	$-30^{\circ}\text{C} \sim 60^{\circ}\text{C}$ ($-22^{\circ}\text{F} \sim 140^{\circ}\text{F}$)
Storage humidity	0~90% RH
Certifications	CE/FCC
Degree of protection	IP66
Material	Metal
Dimensions	212x182x136mm
Weight	2Kg

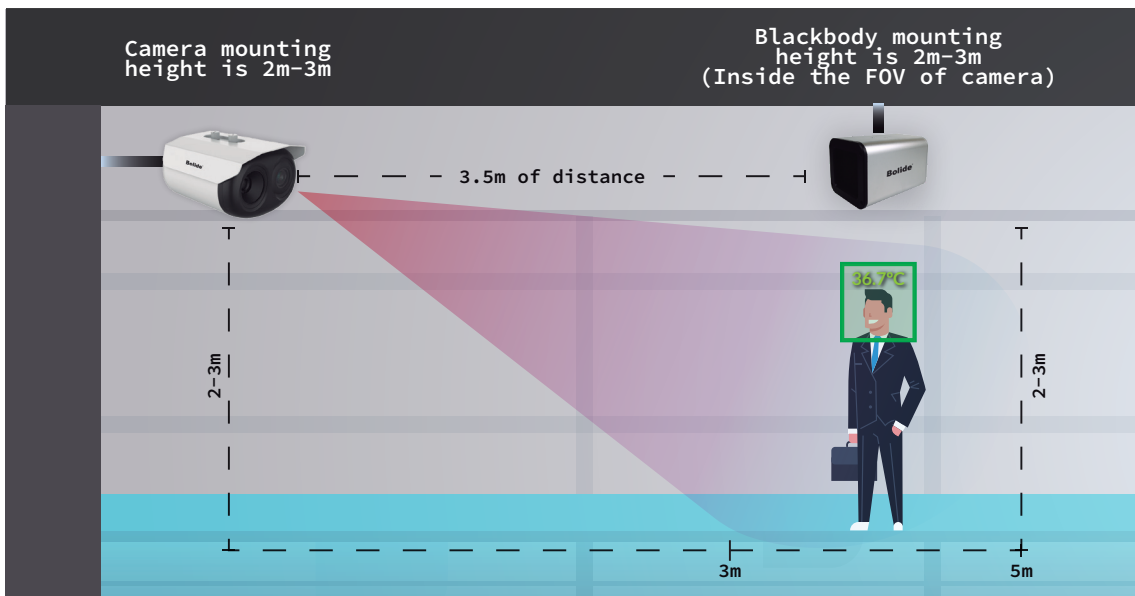
Thermic views



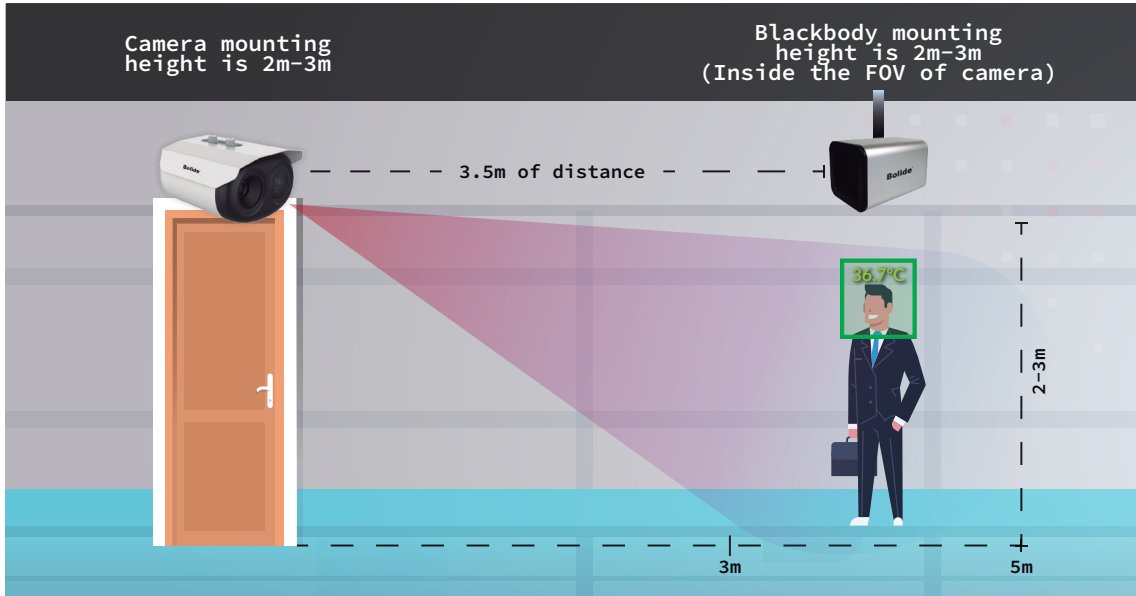
Ceiling Mount



Wall Mount



Installing on the Security Gate



Pedestal Mount

