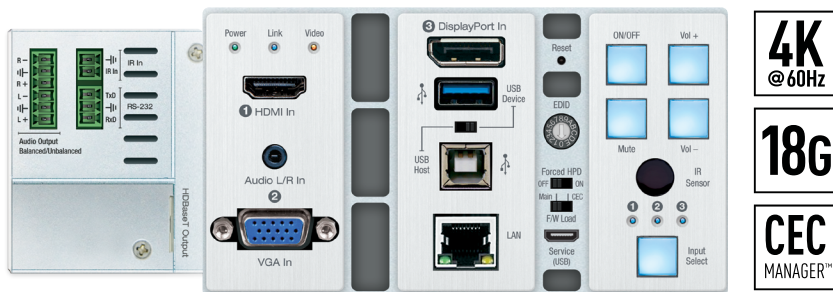




# KD-X3x1WUTx

4K/18G 328 ft. (100m) HDBaseT Transmitter Wall Plate with Auto Switching, HDMI, Display Port and VGA Inputs, USB 2.0, LAN, CEC Control Keypad, Audio De-Embed, IR and RS-232 Pass-Thru, IP Control, Power over HDBaseT. KD-App and KDPlug & Present™ Ready. Tx Only.

## Operating Instructions



# Key digital®

The Experts in Digital Video Technology and Solutions™

# Table of Contents

---

Quick Setup Guide . . . . .	2
Integration Options . . . . .	3
Connections, Buttons, and LEDs. . . . .	9
TCP/IP Commands . . . . .	14
Specifications . . . . .	16
Important Product Warnings: . . . . .	17
Safety Instructions & Power Supply Use: . . . . .	17
Warranty Information. . . . .	17

**Always follow the instructions provided in this Operating Manual.**



Please visit [www.keydigital.com](http://www.keydigital.com) for the latest product documentation and software downloads. Product features and specifications are subject to change without notice.

**Default IP Address: 192.168.1.239, Port 23**

## Introduction

---

Key Digital® KD-3x1WUTx is an HDBaseT wall-plate transmitter + universal presentation switcher + soft-codec enabling interface with HDMI, Display Port, and VGA inputs, as well as USB-A and USB-B connections. KD-X3x1WUTx is ideal for professional video installations in conference rooms, class rooms, lecture halls, auditoriums, and more. KD-X3x1WUTx is natively received by KDX100MRx or by KD-UPS52U Presentation Switcher. Both Rx options have audio de-embedding for ease of integration with audio systems. Additional Key Digital Presentation Switchers also support integration with KD-X3x1WUTx. KD-X3x1WUTx features push-button or IP switching and is KD-App Ready. CEC Manager™ keypad enables basic controls of the connected display for a simplistic all-in-one integration system. KD-X3x1WUTx is HDCP 2.2 compliant and supports 4K/UHD 24/25/30/60 (4:4:4) resolutions with up to 18Gbps bandwidth. 4K/UHD signals are extended up to 100m / 328ft and 1080p up to 150m / 492ft via single CAT5e/6 cable.

In addition to AV signals, KD-X3x1WUTx extends USB 2.0, IR, RS-232 for controlling remotely located equipment. The wall-plate unit fits in a standard US three-gang box and is powered by the Rx unit or Presentation Switcher for convenient installation.

## Key Features

- › **Presentation Switching:** 1 HDMI, 1 Display Port, and 1 VGA with Analog Audio, source selection by push button or IP control
- › **Installation:** Fits in standard US 3-gang wall box or table and wall AV boxes.
- › **Rx Options:** Native integration with KD-X100MRx black box HDBaseT Rx or KD-UPS52U Presentation Switcher. Future Rx options may be available.
- › **Soft-Codec Enabling System:** USB Host + Device ports on wall plate and chosen Rx / Presentation Switch create connectivity hub for professional USB cameras and microphones, audio DSP, keyboard, mouse, or touchscreen display with connected computer
- › **Ultra HD/4K:** Supports up to 4096x2160 or 3840x2160 24/25/30/60hz at 4:4:4 (signals up to 18Gbps bandwidth)
- › **Auto-Sensing:** Automatic selection of newly detected source and switching from newly disconnected source when enabled
- › **CEC Manager™:** Power, volume, and muting controls of the connected displays/projectors without any additional control wiring
- › **KD-App Ready:** Network scan & detect populates pre-built GUI including connected display/projector controls via CEC Manager™
- › **KDPlug & Present™ Ready:** Add KD-CX800 to build a programming-free automation system
- › **Ease of Integration:** Complete configuration using Key Digital Management Software™ Pro
- › **HDCP Licensing:** Fully licensed and compatible with HDCP 2.2
- › **HDR10 and Dolby Vision:** More life-like images through a greater range of luminance levels
- › **Power Over HDBaseT:** Wall-plate unit powered by Rx/Presentation Switch unit
- › **Installation:** Tx unit designed for installation in standard US three-gang box
- › **Signal Extension:** For resolution and cable quality
  - » 4K/UHD (18G): Up to 100m / 328ft
  - » 1080p: Up to 150m / 492ft
- › **Deep Color Support:** Up to UHD/4K 30Hz 4:4:4/12 bits or 60Hz 4:2:2/12 bit
- › **Full Buffer System™:** Manages TMDS re-clocking / signal re-generation, HDCP authentication to source & display, EDID Control handshake, and Hot Plug Detection Voltage
- › **EDID Management:** Internal library with 15 internal EDID handshakes including 4K with HDR in addition to native EDID data copied from the Rx display/device
- › **IR Sensor:** Wall-plate collects line-of-sight IR from remote(s) without external IR wiring
- › **RS-232:** Bi-Directional control to/from Tx and Rx/Presentation Switch unit
- › **Lossless compressed digital audio:** Support for Dolby® TrueHD, Dolby® Digital Plus, Dolby Atmos®, and DTS-HD Master Audio™
- › **Control System Support:** Fully controllable by all TCP/IP and RS-232 supported control systems via open API: Compass Control® Pro, AMX®, Crestron®, KNX®, RTI®, Savant, URC®, Leviton® etc.

## Included Accessories

- › USB-A to USB Micro Data Cable
- › Aluminum decora plate (qty 1) + Decora mounting screws with flat head (qty 6)
- › Gang-box mounting screws (qty 6)
- › 6-pin phoenix terminal (qty 1)
- › 3-pin phoenix terminal (qty 1)
- › 2-pin phoenix terminal (qty 1)

## Quick Setup Guide

 Rx UNITS SOLD SEPARATELY. Go to [Presentation Solutions section](#) for compatible Rx models.

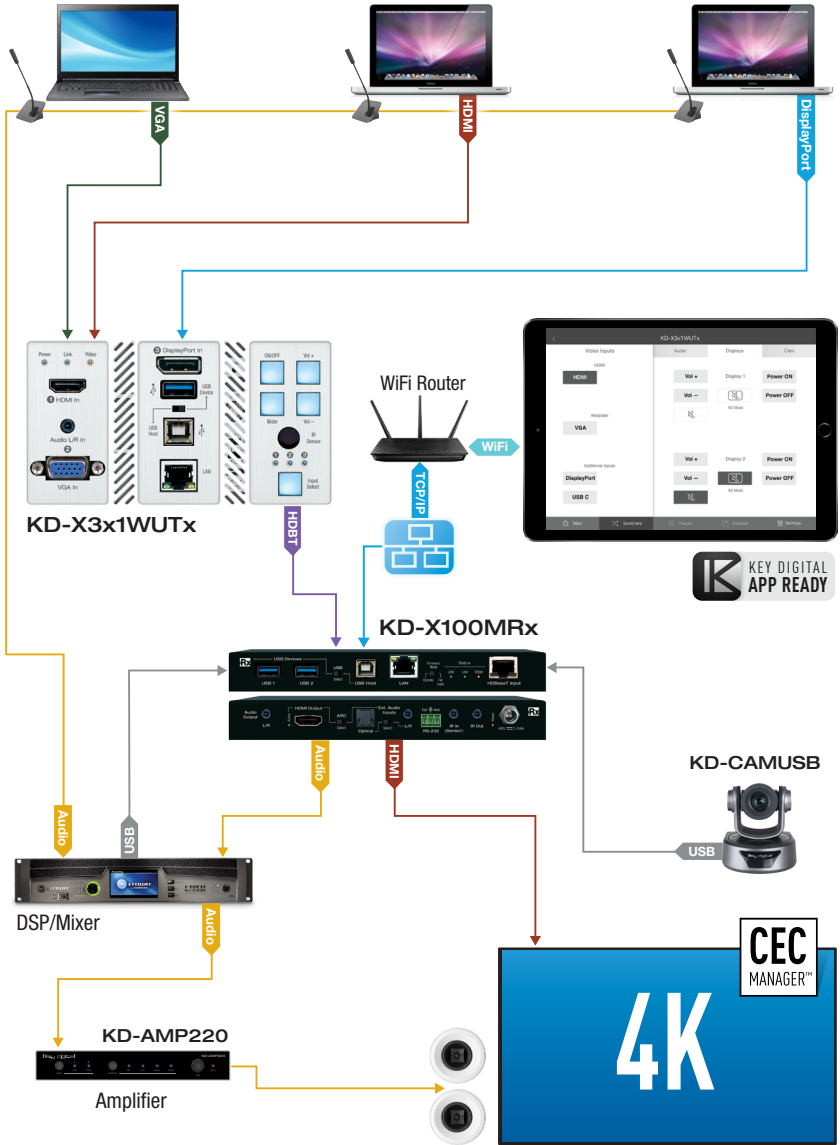
### CONNECT:

Begin with the KD-UPS52U unit, KD-X100MRx, KD-X3x1WUTx, USB camera (sold separately), all input/output devices, and audio system powered off.

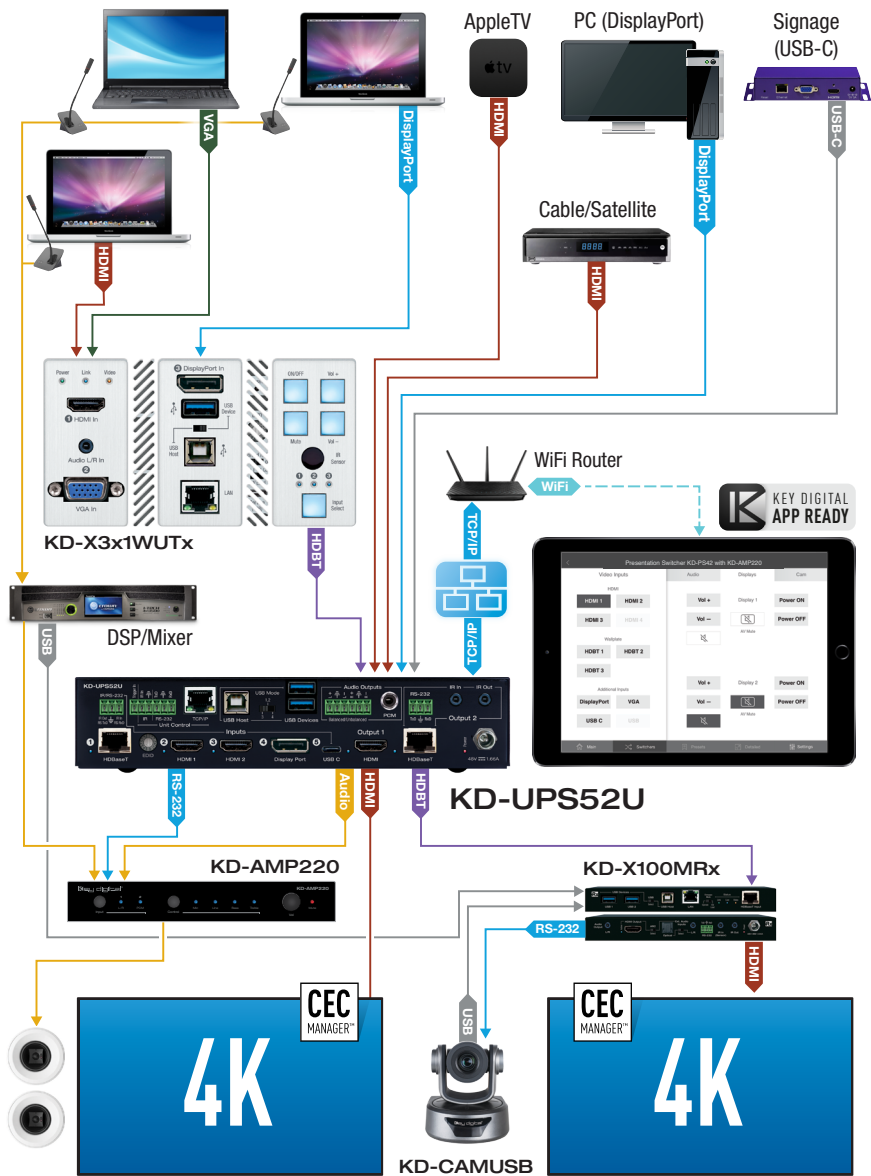
1. Connect HDMI, Display Port, and VGA sources to the input ports of Tx unit
2. (Optional) Connect HDMI, Display Port, USB-C, VGA sources to presentation switcher (sold separately). Port connectivity varies by presentation switcher model.
3. Connect HDMI displays / projectors to the HDMI output port of the RX unit / presentation switcher
4. Connect USB devices into desired USB A ports and USB host computer to desired USB B ports at wall plate transmitter, HDBaseT Rx, or presentation switcher.
  - › a. Note: When using KD-UPS52U presentation switcher the connection location of the USB devices and host is determined by the USB mode selection switch. Please refer to KD-UPS52U Quick Setup Guide for more information.
5. Connect CAT5e/6 cabling to Tx and Rx unit / presentation switch. Use 568-B standard termination on both ends. Avoid couplers and excess CAT cable length.
6. To send the selected audio source into audio systems, connect from the analog or digital audio de-embed outputs of the Rx unit / presentation switcher, or connect to the analog audio de-embed port of the wall plate
7. Connect control system or PC to LAN port of the KD-X3x1WUTx or the Rx for network connectivity
8. Connected monitors are controlled by CEC Manager™ on the HDMI connection. Alternatively, connect IR/RS-232 wiring from control system into pass-thru ports of KD-X3x1WUTx and IR/RS-232 ports of the Rx unit / Presentation Switch
9. Screw-in power supply to the KD-UPS52U or KD-X100MRx unit, and then connect power to outlets.
10. Power on HDMI sources and displays, audio systems, connected computers, USB devices and hosts

# Integration Options

## Integration with KD-X100MRx Receiver:



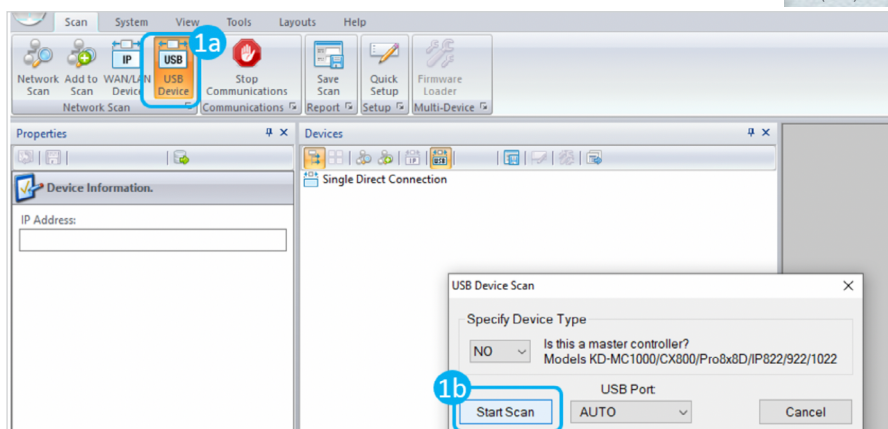
### Integration with KD-UPS52U:



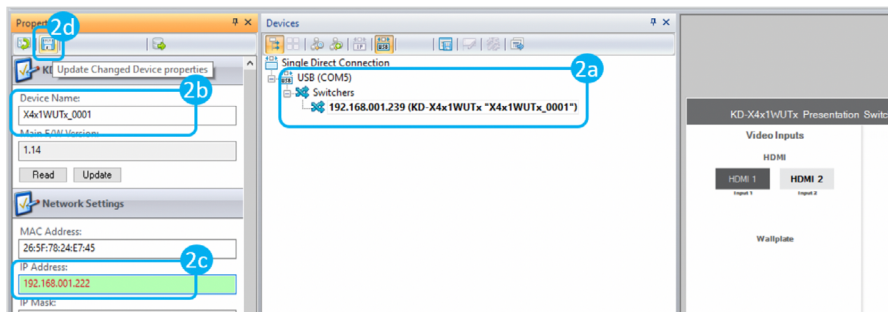
## CONFIGURE:

Configure and control your KD-X3x1WUTx via Key Digital Management Software™ Pro (KDMS™ Pro) that can be downloaded here: [KDMS™ Pro Download](#)

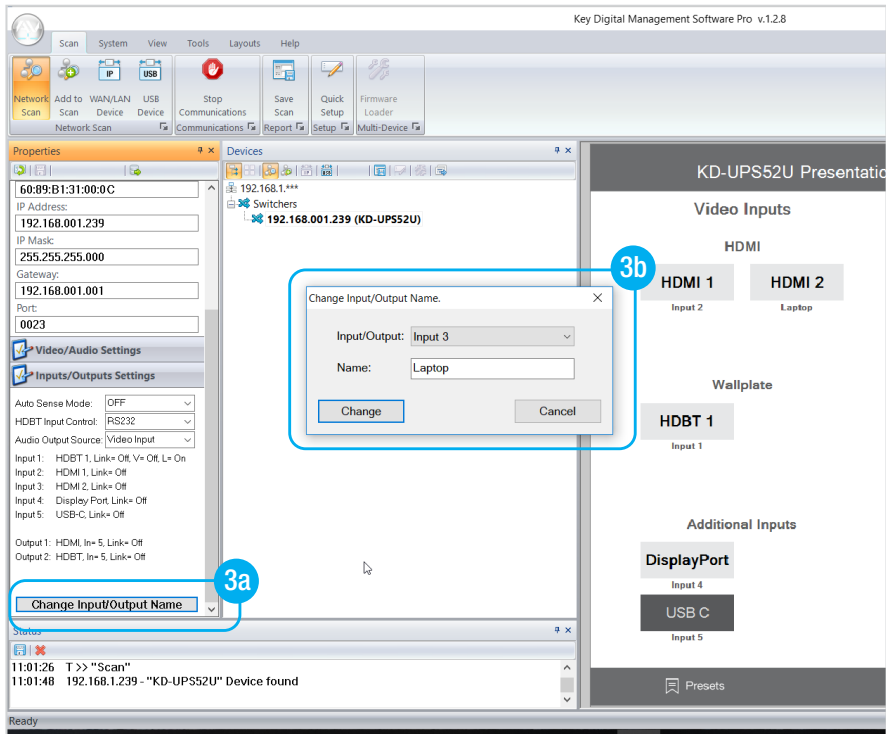
1. Connect to KD-X3x1WUTx from your PC using the USB micro port on the face of the unit
2. Open KDMS™ Pro software and perform a USB Device scan (fig. 1a-1b)



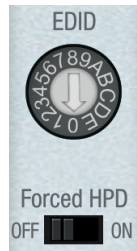
3. Choose the device from the Devices window (fig. 2a)
4. Set the desired Device Name in the KD-X3x1WUTx Information window (fig. 2b)
5. In the Network Settings section of the Properties window, enter the desired IP settings (fig. 2c)
  - a. IP Address (default is 192.168.1.239)
  - b. Subnet Mask (default is 255.255.255.0)
  - c. Gateway (default is 192.168.1.1)
  - d. Port (default is 23)
  - i. Note: If using KD-App, please do not change the port number.
6. Save (fig. 2d)



7. If using KD-App or KDMS for control, set the desired Input/Output names by entering the Input/Output Settings section of the properties window, and selecting the Change Input/Output Name button (fig. 3a), selecting the desired input/output and entering the name (fig. 3b)



8. Set the EDID rotary to position "A" for 4K video with 2ch audio. Choose setting "4" for 1080p video with 2ch audio. Refer to the [Connections, Buttons, and LEDs](#) section for more options and information.
9. Set the Forced HPD to the ON position to fix a high HPD state to connected displays.
10. Additional settings may be adjusted in the KDMS software. Full access to all settings/commands is achieved via terminal session using Tera Term or PuTTY software.
11. Ensure that CEC is enabled on your displays/projectors. Depending on the manufacturer, HDMI-CEC may be given a different name. View [THIS](#) article for a list of CEC names and how to enable CEC on popular displays.
12. Your unit is now ready to control from the KDMS Control Panel, KD-App, or by professional control system.

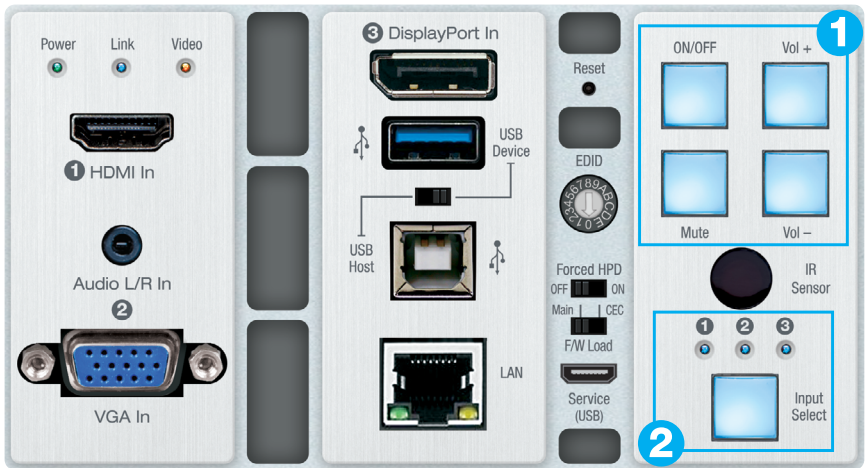




## CONTROL:

### Option 1: Control via Push Button

1. Display Control via CEC Manager™
  - » a. Requires CEC supported display with CEC enabled
2. Input Select
  - » a. Advances through inputs 1, 2 and 3 respectively
  - » b. Press and hold for 5 seconds to active Auto switching. Solid illumination of the button's backlighting indicates mode has been set



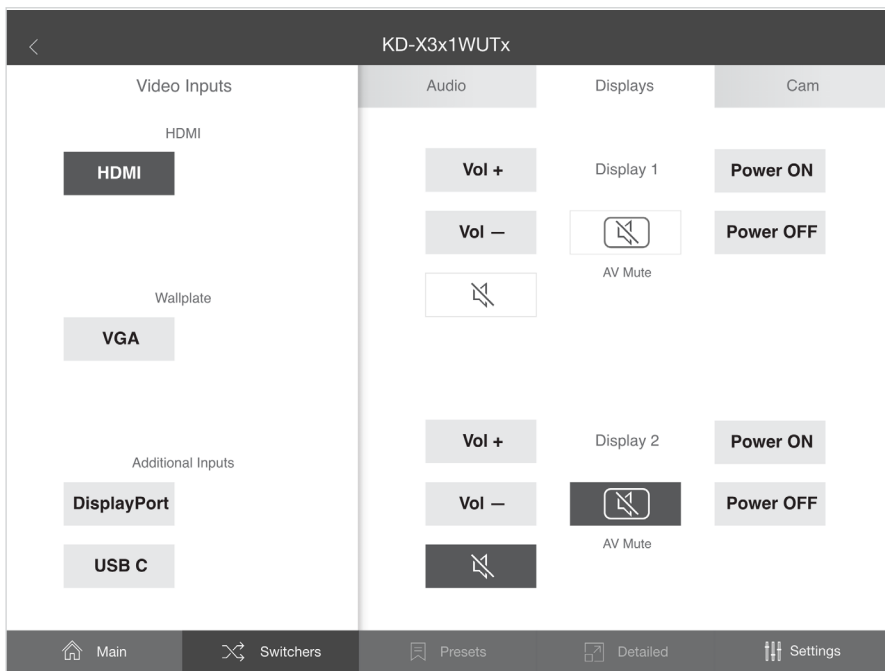
### Option 2: Control via KD-App, Key Digital Management Software™

#### > KD-X3x1WUTx is controllable by:

- » Key Digital's user-friendly iOS App ([downloadable in the App Store](#))
- » Key Digital Management Software ([downloadable here](#)).

#### > Configuration Steps:

- » Connect and configure KD- X3x1WUTx as described in this Quick Setup Guide.
- » Download and open KD-App and/or KDMS
- » Ensure the iOS device and/or PC computer are on the same network with KD-X3x1WUTx
- » Perform a network scan in the KD-App/KDMS
- » Select and control the selected KD-X3x1WUTx



### Option 3: Control via professional control system

KD-X3x1WUTx allows control over TCP/IP interface for bi-directional communication. You may connect to the LAN port of the KD-X3x1WUTx, KD-X100MRx, or KD-UPS52U to deliver network connectivity to the Key Digital devices.

#### Default IP Address: 192.168.1.239, Port 23

- For TCP/IP control, the default static IP address is 192.168.1.239, with port 23
- RS-232 connection is used for control pass-thru to connected devices, not for unit control of the KD-X3x1WUTx
- For the past 10 years, most Key Digital switches have supported a standard audio+video switching command. KD-X3x1WUTx is also controllable by this command, so if you have previously integrated Key Digital switches by third-party control systems you may have success using the same driver/module.
  - » **Switching – Video + Audio together (two commands supported)**
    - » SPO01Slyy - yy = input number (01-02)
    - » SPOSlyy - yy = input number (01-02)

# Connections, Buttons, and LEDs

## Front Connections and LEDs

- **HDMI Input:** Using an HDMI cable, connect your HDMI sources.
  - » Supports up to UHD/4K @ 50/60 fps [4:4:4], 18Gbps
    - » See [Supported Standard 4K Video Formats table below](#)
  - » Supports HDR10 and Dolby Vision
  - » Compliant with HDCP 2.2 and previous
  - » Supports lossless compressed audio formats including Dolby® TrueHD, Dolby® Digital Plus, DTS-HD Master Audio™, and Dolby® Atmos
  - » Does not support CEC pass through from display connected to Rx unit / presentation switch
- **Display Port Input:** Using a Display Port cable, connect your source.
  - » Supports up to UHD/4K @ 50/60 fps [4:4:4], 18Gbps
  - » Supports HDR
  - » Supports Display Port version 1.3 and previous
  - » Compliant with HDCP 2.2 and previous



### Supported standard 4K Video Formats:

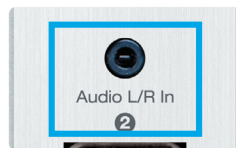
	Resolution	Bandwidth
1	4K@24/25/30 [4:4:4] 8bit	< 10.2Gbps
2	4K@24/25/30 [4:2:2] 8/10/12bit	< 10.2Gbps
3	4K@50/60 [4:2:0] 8bit	< 10.2Gbps
4	4K@24/25/30 [4:4:4] 10/12bit	< 18Gbps
5	4K@50/60 [4:2:2] 8/10/12bit	< 18Gbps
6	4K@50/60 [4:2:0] 10/12bit	< 18Gbps
7	4K@50/60 [4:4:4] 8bit	< 18Gbps

- **VGA Input:** Using a 15pin VGA cable, connect your source.
  - » Supported resolutions: 640x480@60/75, 800x600@56/60/75, 1024x768@60/75, 1280x720@60, 1280x768@60/75, 1366x768@60/75, 1280x1024@60/75, 1440x900@60/75, 1600x900@60, 1600x1200@60, 1920x1080@60, 1920x1200@60s
  - » Video Scaler built-in for up-scale & down-scale to desired output resolution
  - » Default video output is 1920x1080p / 60fps



- **Analog Audio Input:** Using a 3.5mm stereo cable, connect your audio source to be associated with the VGA video input.

- » Embedded with VGA Input
- » 2 VRMS line audio
- » Sampling Frequency: 48kHz, Data Length: 24Bits



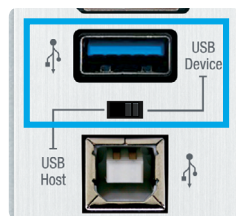
- **Power, Link, Video LEDs:** Indicate system connectivity status

- » Power (**red**) illuminates solid with proper powering from local connection / presentation switch
- » Link (**blue**) illuminates solid from healthy HDBaseT connectivity with Rx unit / presentation switch
- » Video (**green**) illuminates solid with active HDMI signal



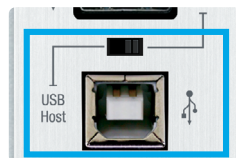
- **USB Device Port**

- » Supports USB2.0 and previous
- » Used for connecting USB endpoints (ie KD-CAMUSB, keyboard, mouse)
- » Not used for connecting USB hosts (ie computer)
- » Supports connectivity to USB hubs, but may not exceed 15 endpoint devices
- » Provides 5V 500mA power
- » Use USB toggle switch to determine if KD-X3x1WUTx will be used to connect a USB host (USB-B port) or USB device (USB-A port). Both host and device are not simultaneously possible.



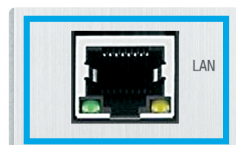
- **USB Host Port**

- » Supports USB2.0 and previous
- » Used for connecting USB host (ie computer)
- » Not used for connecting USB hosts (ie KD-CAMUSB, keyboard, mouse)
- » Use USB toggle switch to determine if KD-X3x1WUTx will be used to connect a USB host (USB-B port) or USB device (USB-A port). Both host and device are not simultaneously possible.



- **LAN Port**

- » **Default static IP address is 192.168.1.239, port 23**
- » Used to connect with Network Switch and peripheral devices needing network connectivity and/or TCP/IP control
- » Unit configuration, control, and firmware updates are most commonly achieved with Key Digital Management Software™ Pro, download at [KDMS™ Pro Download](#)



- **Reset Pin**


- » Push and hold for approximately 10 seconds to restore all settings to default. Front LEDs will turn off and restore during bootup process to indicate the reset has completed.



## > EDID Rotary

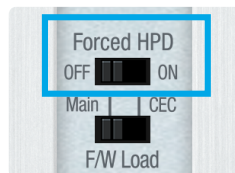
- » EDID authentication is provided from the unit to the connected inputs/sources.
- » The EDID file (AKA "handshake") is selected using the EDID rotary on the unit and provides a list of compatible video and audio formats as well as digital data, informing the source device what it should output.
- » Most sources will comply with a new EDID file without a power-cycle, but devices do behaves differently
- » Adjustments may speed up sync time during source selection.



Position	EDID Handshake Description	EDID Rotary
0	Copy EDID from HDMI Output 1	 <p>Note: Default position is "A"</p> <p><b>IMPORTANT: Please apply light pressure to the EDID rotary when making your selection.</b></p>
1	1080i, 2CH AUDIO	
2	1080i, DOLBY/DTS 5.1	
3	1080i, HD AUDIO	
4	1080p, 2CH AUDIO	
5	1080p, DOLBY/DTS 5.1	
6	1080p, HD AUDIO	
7	4Kx2K@60, 10.2G, HDR, 2CH AUDIO	
8	4Kx2K@60, 10.2G, HDR, DOLBY/DTS 5.1	
9	4Kx2K@60, 10.2G, HDR, HD AUDIO	
A	4Kx2K@60, 18G, HDR, 2CH AUDIO	
B	4Kx2K@60, 18G, HDR, DOLBY/DTS 5.1	
C	4Kx2K@60, 18G, HDR, HD AUDIO	
D	1280x720p@60 DVI (no audio)	
E	1920x1080p@60 DVI (no audio)	
F	4Kx2K@30, 10.2G, HDR, 2CH AUDIO	

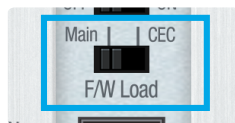
## > Forced HPD Switch: Troubleshooting tool

- » When ON, Hot Plug Detection voltage is fixed on to the connected sources
- » Standard HPD passthrough from display to source when set to OFF position



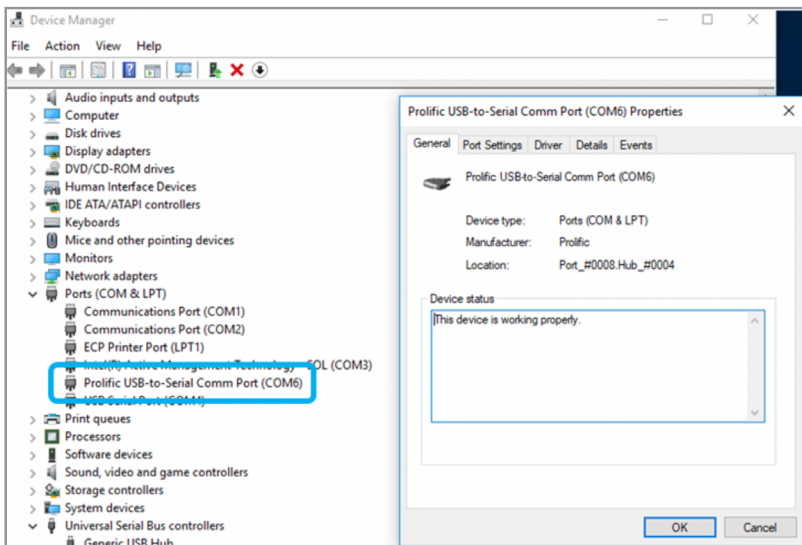
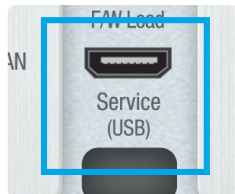
### › Firmware Load Switch:

- › Used to select the firmware load location
- › **IMPORTANT:** Consult with Key Digital tech support before updating firmware



### › Service USB Port:

- › Used for configuration and control from PC via KDMS Pro, KDMS, or third-party control terminal
- › Used for firmware updates (consult with Key Digital tech support before updating firmware)
- › Supports USB driver for Windows 10, 7, XP, Mac, Linux
- › Will register as "Prolific USB-to-Serial Comm Port in Device Manager"
- › Can be used as RS-232 control port. Baud rate is 57,600



### › Display Control Buttons

- › Sends CEC Power Toggle, Volume Up, Volume Down, and Mute Toggle commands to Display connected to RX unit / Presentation Switcher
  - › Requires CEC supported display with CEC enabled
  - › Future updates may enable additional control options without programming needed



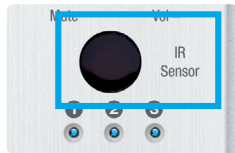
## › Input Select Button

- › Advances through inputs 1, 2, 3 and 4 respectively
- › LED display indicates selected source
- › Press and hold for 5 seconds to active Auto switching. Solid illumination of the button's backlighting indicates mode has been set
  - › Note: Auto switching is disabled when a manual push button switching is executed. A fixed auto switching mode may be set via command string or through KDMS Pro software.



## › IR Sensor

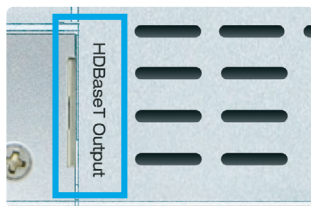
- › Used to collect line-of-sight IR from remote control
- › Receives signals from a 90° angle at up to 30ft away
- › Signal is output on Rx unit / presentation switch's IR Out port
- › KD-X3x1WUTx is NOT controllable via IR
- › IR and RS-232 supported simultaneously



## Rear Connections

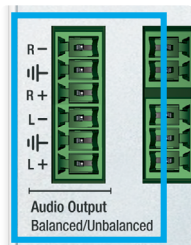
### › HDBaseT Output: Connect a CAT5e/6 cable to the Rx unit / presentation switch at the port labeled "HDBaseT In"

- › 4K/UHD (18G): Up to 100m / 328ft
- › 1080p: Up to 150m / 492ft
- › Must connect with KD-UPS52U, KD-X100MRx, or KD-PS42
- › Has been verified some third-party HDBaseT Rx / projectors. Contact Key Digital Technical Support for more information.
- › Power over HDBaseT from Rx



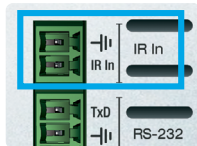
### › Analog L/R Audio Output: Connect to audio system.

- › 6-pin terminal block with de-embedded audio from the selected source
- › Drives audio signals up to 2 VRMS with a sampling rate of 192KHz
- › Automatically mutes if audio formatting is not PCM 2ch
- › The Pin assignment is as follows:
  - › Left + is Pin 1; Left - is Pin 3; Left Ground is Pin 2.
  - › Right + is Pin 4; Right - is Pin 6; Right Ground is Pin 5.
- › There are no pre-amp or format conversion feature

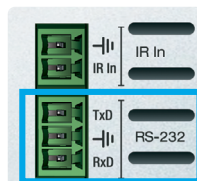


### › IR In: Connect to the IR In terminals from a control system or an IR connecting block.

- › Signal is output on Rx unit / presentation switch's IR Out port simultaneously as any IR input collected by the IR Sensor
- › KD-X3x1WUTx is not controllable via IR



- **RS-232 Terminal:** Connect with control system for pass-thru of bi-directional RS-232 signals to/from controlled device.
  - » Supports baud rate up to 115,200bps
  - » KD-X3x1WUTx is not controllable via RS-232



## TCP/IP Commands

KD-X3x1WUTx allows bi-directional control over TCP/IP connection made at KD-X3x1WUTx, KD-UPS52U, or KD-X100MRx.

- **Default static IP address is 192.168.1.239, port 23**

### Notes:

- » Commands are not case-sensitive
- » Commands require a carriage return following each string
- » Spaces are shown for clarity; commands should NOT have any spaces
- » After a new command is received, a prompt should be sent back

### Help Command (H). Returns entire API in readable format:

```
-----
--                               Key Digital Systems HELP                               --
-----
--      KD-X3x1WUTx                               F/W Version : 1.02                --
--
-- H          : Help                               --
-- STA        : Show Global System Status         --
--
-- VGA Input Setup Commands:                      --
-- SPV EDID x : Set VGA EDID to x,                 --
--               [0=1920x1080@60, 1=1920x1200@60, 2=1360x768@60, 3=1280x720@60] --
-- SPV RES x   : Set Output Resolution (Video Scale) x --
--               [0=Auto, 1=1080p@50, 2=1080p@60, 3=720p@50, 4=720p@60,] --
--               [5=1280x1024@60, 6=1024x768@60, 7=1360x768@60, 8=1920x1200@60] --
-- SPV AR x    : Set Aspect Ratio x, [0=Auto, 1=16:9, 2=4:3] --
-- SPV PM x    : Set Picture Mode x,                --
--               [0=Standard, 1=Natural, 2=Dynamic, 3=Movie] --
-- SPV CT x    : Set Color Tone x, [0=Standard, 1=Cool, 2=Warm, 3=User] --
-- SPV CTR xxx : Set Red Color Tone xxx = [1-255] --
-- SPV CTG xxx : Set Green Color Tone xxx = [1-255] --
-- SPV CTB xxx : Set Blue Color Tone xxx = [1-255] --
-- SPV PB xxx  : Set Picture Brightness xxx = [0-100] --
-- SPV PC xxx  : Set Picture Contrast xxx = [0-100] --
-- SPV MIH xxx : Move Output Horizontal Image xxx = [0-100] --
-- SPV MIV xxx : Move Output Vertical Image xxx = [0-100] --
-- SPV AHS xxx : Adjust Output Horizontal(Width) Size to xxx = [0-100] --
-- SPV AP xxx  : Adjust Output Phase to xxx = [0-100] --
--
-- Video Output Setup Commands: xx = [01,A=All], yy = [01-03,U,D] --
-----
```



```

-- ( yy : 01=HDMI1, 02=VGA, 03=DisplayPort[DP] ) --
-- SPO SI yy      : Set Output to Video Input yy --
-- SPO xx SI yy   : Set Output to Video Input yy --
-- SPO xx ON/OFF  : Set Output xx ON/OFF --
-- SPO xx VM E/D  : Set Output xx Video Mute Enable/Disable --
-- SPO xx DBG ON/OFF : Set Output xx Debug Mode ON/OFF --
-- SPO xx LRM ON/OFF : Set HDBT Output xx Long Range Mode ON/OFF --
-- --
-- Display Control Commands: xx = [01,A=All] --
-- SPO xx TV ON/OFF : Set Display xx ON/OFF (Turn TV On/OFF) --
-- SPO xx AV U/D    : Set Display xx Volume Up/Down --
-- SPO xx AM E/D/T  : Set Display xx Audio Mute Enabled/Disabled/Toggle --
-- --
-- Input/Output/Device Naming Commands [xx=01-04] (c=Max. 16 Chars) --
-- SPI xx WN ccccccccccccccc : Write Input xx Name --
-- SPI xx RN                : Read Input xx Name --
-- SPO xx WN ccccccccccccccc : Write Output xx Name --
-- SPO xx RN                : Read Output xx Name --
-- SPC WN ccccccccccccccc    : Write Device Name --
-- SPC RN                    : Read Device Name --
-- --
-- Network Setup, ( xxx=[000-255], zzzz=[0001~9999] ) --
-- SPCE TIPA xxx.xxx.xxx.xxx : Set Host IP Address to xxx.xxx.xxx.xxx --
-- SPCE TIPM xxx.xxx.xxx.xxx : Set Net Mask to xxx.xxx.xxx.xxx --
-- SPCE TIPR xxx.xxx.xxx.xxx : Set Route IP Address to xxx.xxx.xxx.xxx --
-- SPCE TIPP zzzz           : Set TCP/IP Port to zzzz --
-- SPCE TIPB                : Apply New Network Config --
-- --
-- System Control Setup Commands: --
-- SPC AS x      : Set Auto Sense Mode x = [0=OFF,1=AUTO,2=FORCED ON] --
-- SPC FB E/D    : Enable/Disable Front Panel Buttons --
-- SPC RSB z     : Set USB RS232 Baud Rate to z bps, z=[0-5] --
-- [0:115200, 1:57600, 2:38400, 3:19200, 4:9600, 5:4800] --
-- SPC DF       : Reset to Factory Defaults --
-- SPC DF00    : Reset to Factory Defaults without Network Reset --

```

### Status Command (STA). Returns unit status and settings in readable format:

```

-----
-- Key Digital Systems STATUS --
-----
-- Model: KD-X3x1WUTx, Device Name: X3x1WUTx_0001 --
-- Main F/W Ver: 1.02, CEC Ver: 1.05 --
-- --
-- USB(RS232): Baud Rate=115200bps, Data=8bit, Parity=None, Stop=1bit --
-- Front Panel Button : Enabled --
-- --
-- Network Setting(Web Server/TCP Control) Status --
-- MAC Address = 60:89:B1:34:00:01 --
-- Host IP Address = 192.168.001.239 --
-- Net Mask = 255.255.255.000 --
-- Router IP Address = 192.168.001.001 --
-- TCP Port = 0023 --

```

```

-- Video Input Status
-- EDID = DEFAULT 10,  FORCED HPD = ON , AUTO SENSE = OFF
-- 01 : HDMI,  LINK = ON
-- 02 : VGA ,  EDID = DEFAULT 0, LINK = OFF
-- RES=2, AR=1, PM=0, CT=1, CTR=128, CTG=128, CTB=128, PB=50, PC=50,
-- MIH=50, MIV=50, AHS=50, AP=50
-- 03 : DP ,  LINK = ON
--
-- Video Output Status (D=Disable, E=Enable)
-- HDBT Output : IN = 01, OUT = ON , V/MUTE = D, LINK = ON , DBG = OFF
-- LRM = OFF
--
-- Display Output Status (CEC Control)
-- HDBT Output : TV = ON , A/V MUTE = DISABLE, A/MUTE = DISABLE
-----

```

## Specifications

---

### Technical:

- » Inputs: 1 HDMI, 1 Display Port, 1 VGA with 3.5mm Stereo Audio, 1 IR Sensor, 1 Serial IR, 1 Bi-Directional RS-232
- » Outputs: 1 HDBaseT RJ45, 1 Bi-Directional RS-232
- » DDC Signal (Data): Input DDC Signal: 5 Volts p-p (TTL)
- » HDMI Video/Audio Signal: Input Video Signal: 1.2 Volts p-p
- » VGA Signal: Input Video Signal: 1.2 Volts p-p
- » USB-C Video/Audio Signal: Input Video Signal: 1.2 Volts p-p
- » RJ45 Connector: Shielded Link Connector, HDBaseT
- » IR Connectors: 1 IR Sensor, 1 2-pin phoenix terminal
- » RS-232 Connector: 3-pin phoenix terminal

### General:

- » Regulation: CE, RoHS, WEEE, EAC
- » Wallplate: Standard 3-gang Wallplate
- » Enclosure: Faceplate - Silver Brushed Metal, Body - Texturized Silver Metal
- » Product Dimensions: 5.5 x 4.1 x 1.43" (141 x 105 x 36.4mm)
- » Product Weight: Weight: 1.3 lbs
- » Packaging Dimensions: 11" x 7.9" x 2.1" (280 x 200 x 55 mm)
- » Packaging Weight; Weight: 2.1 lbs
- » Accessories:
  - » USB-A to USB Micro Data Cable
  - » Aluminum decora plate (qty 1) / Decora mounting screws with flat head (qty 6)
  - » Gang-box mounting screws, (qty 6)
  - » 6-pin phoenix terminal (qty 1) , 3-pin phoenix terminal (qty 1), 2-pin phoenix terminal (qty 1)

## Important Product Warnings:

---

1. Connect all cables before providing power to the unit.
2. Test for proper operation before securing unit behind walls or in hard to access spaces.
3. If installing the unit into wall or mounting bracket into sheet-rock, provide proper screw support with bolts or sheet-rock anchors.

## Safety Instructions:

---

Please be sure to follow these instructions for safe operation of your unit.

1. Read and follow all instructions.
2. Heed all warnings.
3. Do not use this device near water.
4. Clean only with dry cloth.
5. Install in accordance with the manufacturer's instructions.
6. Do not install near any heat sources such as radiators, heat registers, stoves, or other apparatus (including amplifiers) that produce heat.
7. Only use attachments/accessories specified by the manufacturer.
8. Refer all servicing to qualified service personnel. Servicing is required when the device has been damaged in any way including:
  - » Damage to the power supply or power plug
  - » Exposure to rain or moisture

## Power Supply Use:

---

You **MUST** use the Power Supply **PROVIDED** with your unit or you **VOID** the Key Digital® Warranty and risk damage to your unit and associated equipment.

## Warranty Information

---

All Key Digital® products are built to high manufacturing standards and should provide years of trouble-free operation. They are backed by a Key Digital Limited 3 Year Product Warranty Policy.

<http://www.keydigital.com/warranty.htm>

## Technical Support

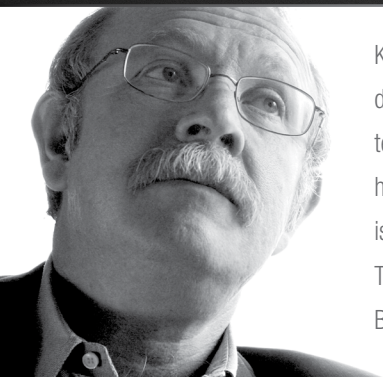
For technical questions about using Key Digital® products:

- > Phone: 914-667-9700
- > E-mail: [tech@keydigital.com](mailto:tech@keydigital.com)

## Repairs and Warranty Service

Should your product require warranty service or repair, please obtain a Key Digital® Return Material Authorization (RMA) number by contacting us at:

- > Phone: 914-667-9700
- > E-mail: [rma@keydigital.com](mailto:rma@keydigital.com)



Key Digital®, led by digital video pioneer Mike Tsinberg, develops and manufactures high quality, cutting-edge technology solutions for virtually all applications where high-end video and control are important. Key Digital® is at the forefront of the video industry for Home Theater Retailers, Custom Installers, System Integrators, Broadcasters, Manufacturers, and Consumers.

Key Digital® :: 521 East 3rd Street :: Mount Vernon, NY 10553

Phone : 914.667.9700 Fax : 914.668.8666 Web : [www.keydigital.com](http://www.keydigital.com)