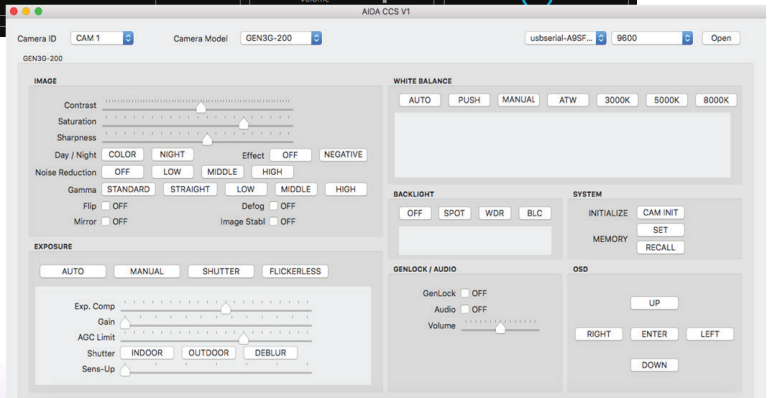
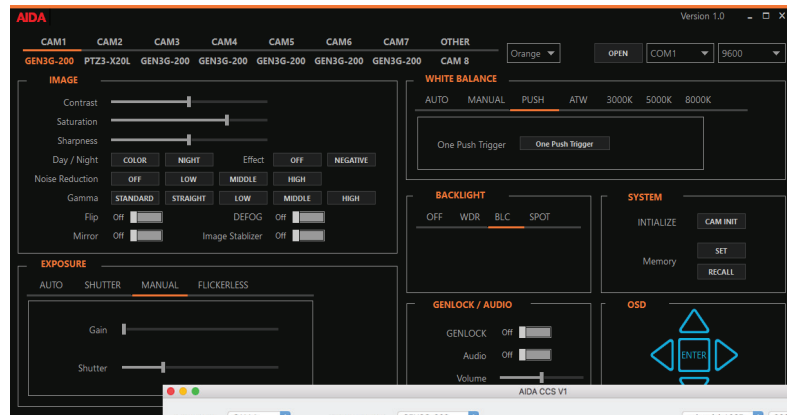


CCS-USB

VISCA Camera Control Unit & Software



SMALL BUT MIGHTY – One CCS to control them all

SONY VISCA Compatible and work with most of major VISCA protocol products.
Support PELCO Pan / Tilt / Zoom / Focus protocol.
Control up to 7 VISCA control cameras and 255 third party control cameras.
User friendly software interface.

Support RS-232, RS-485, RS-422.
USB interface for easy installation.
Windows and MAC OSX compatible.
Compact and rugged design.

AIDA

CCS-USB VISCA Protocol Camera Control Unit & Software

Control

Camera Interface	RS-232C RS-485/RS-422: Terminal Block Connector
Protocol	VISCA for Camera Setting up to 7 Cameras PELCO for Pan/Tilt/Zoom Control up to 255 Cameras
User Interface	Graphic User interface
PC interface	USB
Compatibility	All VISCA Protocol Camera All PELCO Protocol Camera

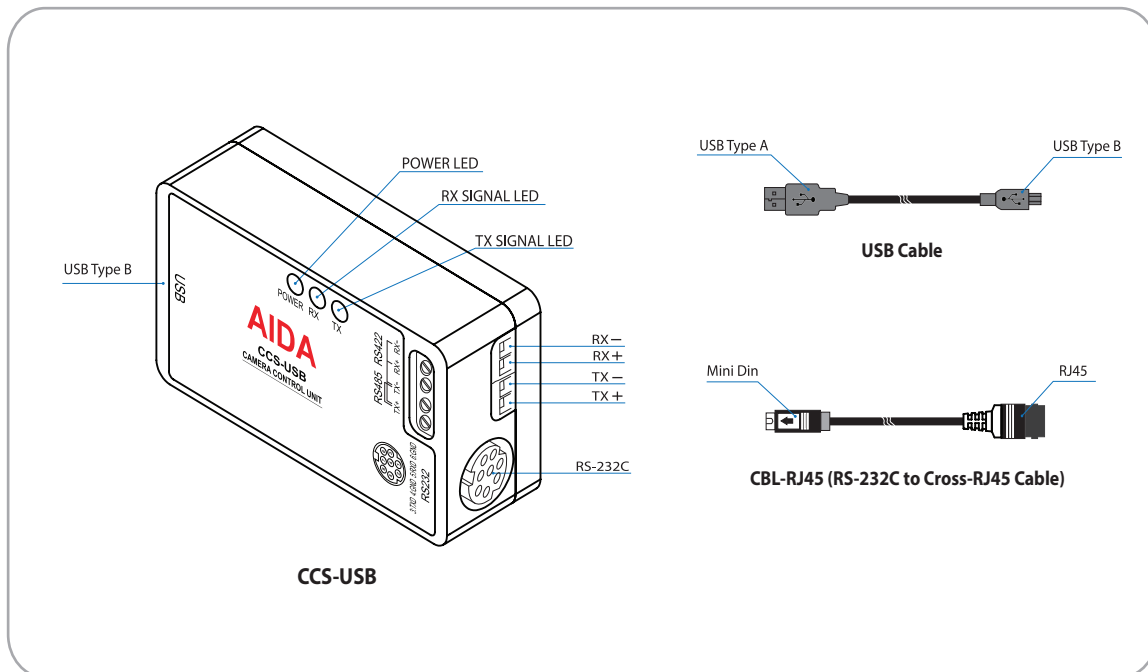
Physical

Camera Control	RS-232C: 8 Pin Mini Din Connector RS-485/RS-422: Terminal Block Connector
Accessory	CBL-RJ45 (RS232 to Cross-RJ45 converter cable)
Operation Temp	32°F - 104°F
Dimension	62m x 35m x 19mm / 2.44" x 1.37" x 0.74"
Weight	50g / 0.11Lbs
Power	USB Powered

Main Functions on VISCA Control

Image	Contrast, Saturation, Sharpness, Gamma
Exposure	Auto, Shutter Priority, Iris Priority, Manual, Flickerless
White Balance	Auto, Manual, ATW
Backlight	WDR, BLC

Connection



Package contents



CBL-RJ45 (RS-232C to Cross-RJ45 Converter Cable)



USB Cable

AIDA Imaging manufactures advanced imaging and streaming devices for several different industries and applications. Our focus is on providing innovative products, maintaining quality control, and excellence in service to professionals and consumers worldwide. All AIDA Imaging devices are proudly designed in the USA.

AIDA

570 E. Arrow Hwy, Suite A, San Dimas, CA 91773
 info@aidaimaging.com
 Toll Free: 844.631.8367
 Tel: 909.333.7421