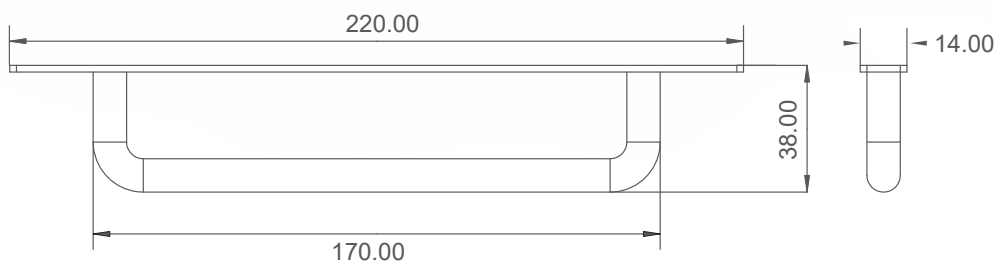
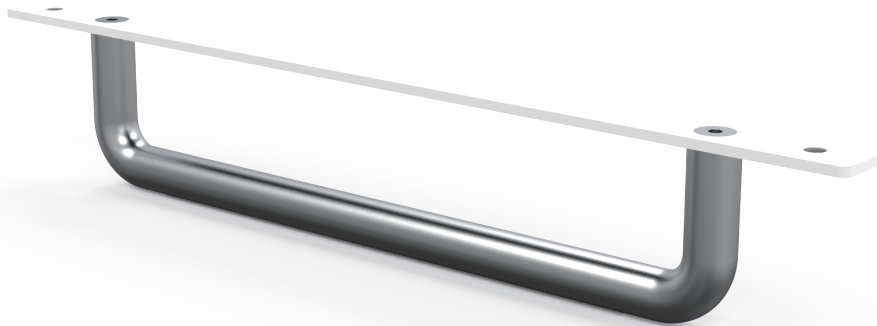


HDL-03

Handle for Clinical Review & Dental Monitors



Specifications

Compatible Models	Displays	DR-2202
Exterior	Material	Metal
	Colour	White
Dimensions	Product (W x H x D)	220.0 x 38.0 x 14.0 mm (8.66" x 1.50" x 0.55")
	Packaging (W x H x D) (1 set)	290.0 x 200.0 x 80.0 mm (11.42" x 7.87" x 3.15")
Weight	Net Weight	0.25 kg (0.55 lb)
	Gross Weight (1 set)	0.37 kg (0.82 lb)
Packaging	1 Carton	20 pcs