

SaviGateway G300

User Manual

IP Video Gateway



**Control and Switch Multiple Streaming Video Encoders
and Decoders Remotely over a Network**

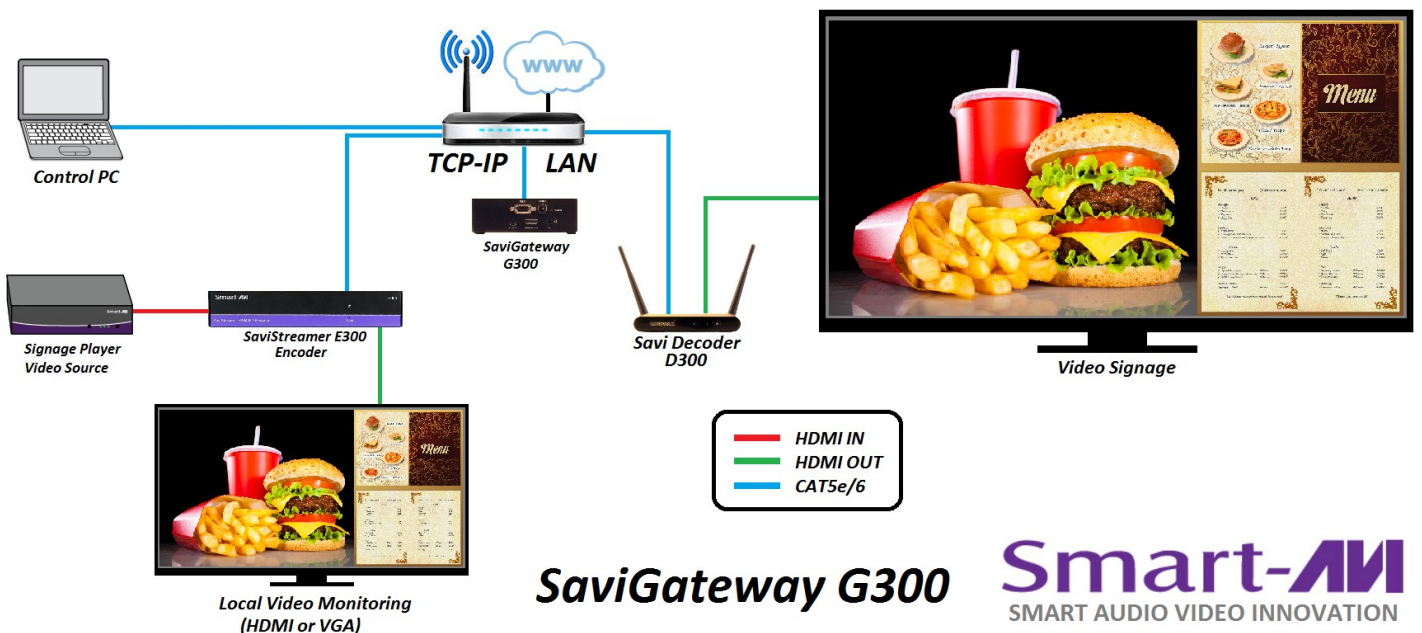
Smart-AVI
SMART AUDIO VIDEO INNOVATION

TABLE OF CONTENTS

WHAT'S IN THE BOX?	2
INTRODUCTION	3
FEATURES	3
APPLICATIONS	3
TECHNICAL SPECIFICATIONS	4
HARDWARE INSTALLATION	5
NETWORK CONTROL	6
LIMITED WARRANTY STATEMENT	7

WHAT'S IN THE BOX?

PART NO.	QTY	DESCRIPTION
SAVI-G300-S	1	SaviGateway G300 IP Video Gateway
PS5VDC2A	1	Power Adapter
	1	Quick Start Guide



SaviGateway G300

Smart-AVI
SMART AUDIO VIDEO INNOVATION

INTRODUCTION

The SaviGateway G300 IP Video Gateway gives you the ability to configure, control and connect multiple streaming video encoders to multiple decoders. This is done using a browser on your network to access the SaviGateway G300 integrated webpage. Add as many encoders and decoders as needed. The SaviGateway G300 acts as a matrix to connect encoders to decoders in any configuration required.

FEATURES

- Integrated webpage for easy access and control over a network connection.
- Scalability, Add as many encoders as needed for multiple video streams. Add as many decoders as needed for as many displays as required. Connect your video streams to your displays in any combination you choose.
- Name your video streams and displays for easy organization and switching.
- Compatible with existing TCP/IP & Ethernet Network architecture.

APPLICATIONS

- Retail Store Displays
- Business Lobbies
- Restaurants
- Digital Signage
- Airports & Transportation Hubs
- Hospitals
- Schools & Universities
- Hotels/Resorts
- Government Buildings
- Convention & Conference Centers
- Entertainment Venues
- Wall Displays
- Control Rooms

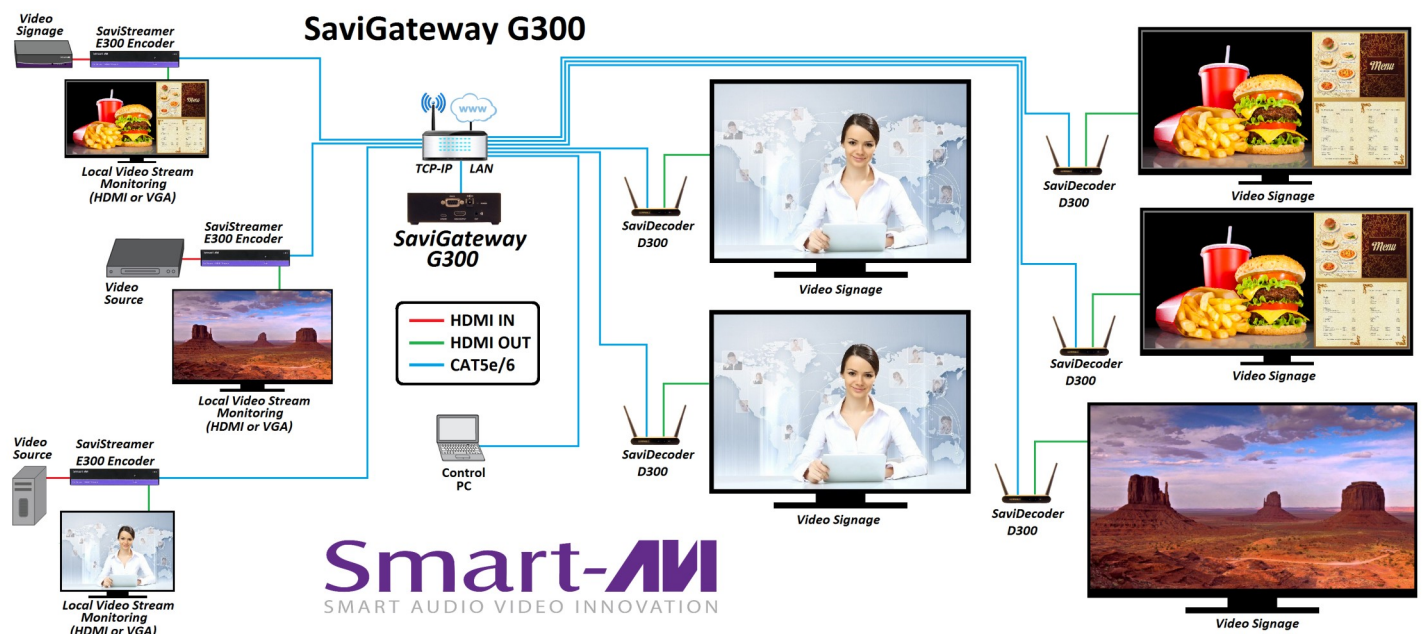


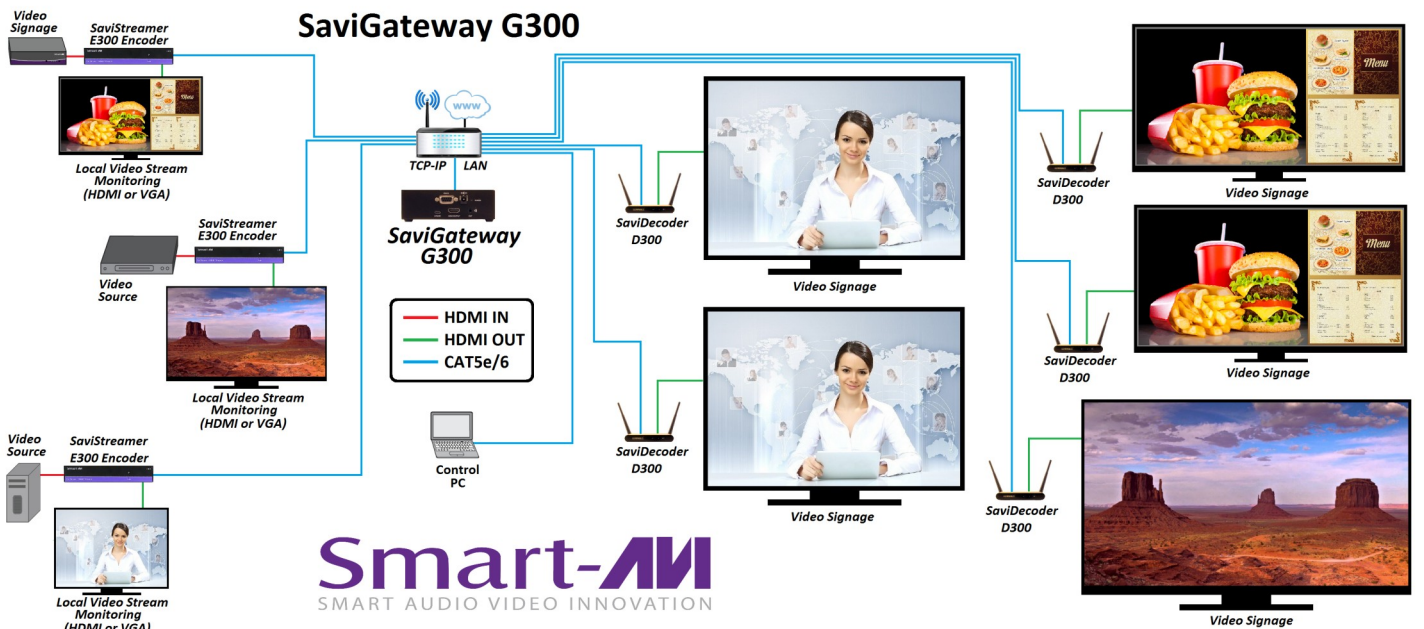
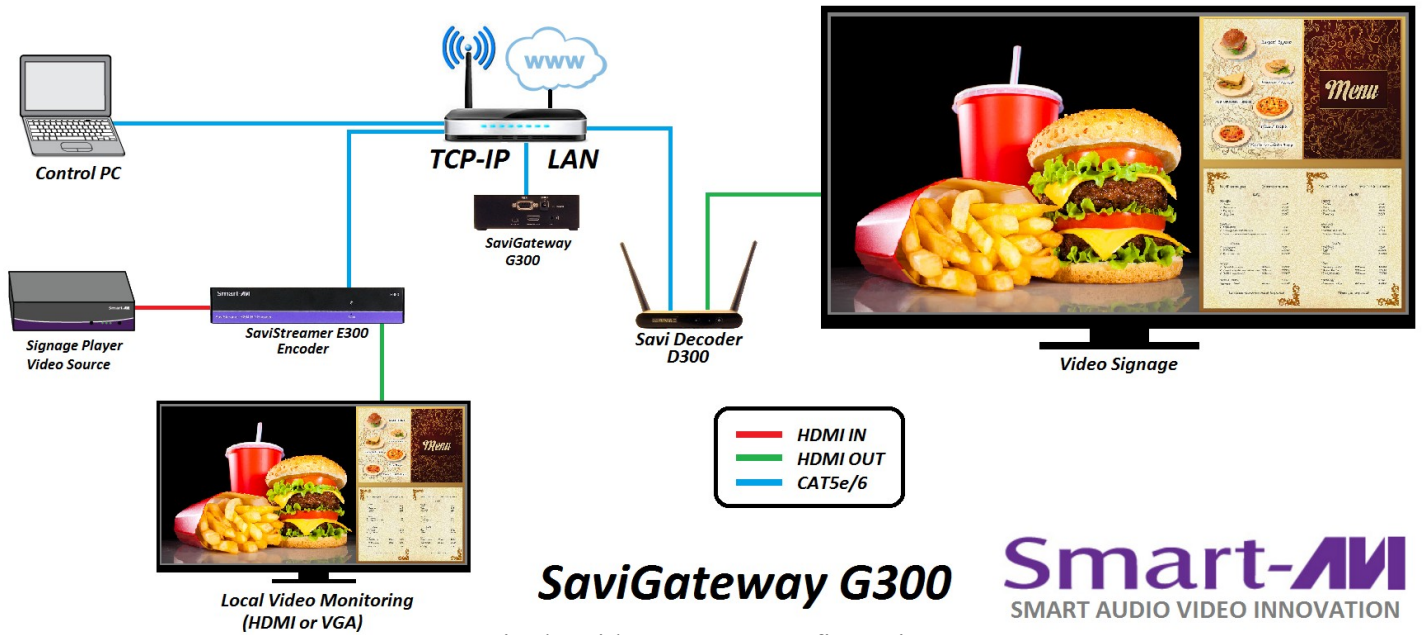
Figure 3-1

TECHNICAL SPECIFICATIONS

HARDWARE SPECIFICATIONS	
CPU	1.2GHz 64-bit quad-core ARMv8
RAM	1 GB
Ethernet	(1) RJ45 jack, Onboard 10/100 Ethernet
USB	(4) USB 2.0
Video	(1) HDMI
Onboard Storage	16 GB
Operating System	Linux
RS-232	(1) DB9 Female
Audio	(1) 3.5mm
CONTROL	
Ethernet (TCP/IP)	(1) RJ-45
OTHER	
Power Adapter	5VDC 2A
Dimensions	4.875" W x 1.75" H x 3" D
Weight	.35 lbs.
Working Temp.	32 to 122 °F (0 to 50 °C)
Working Humidity	Up to 85% RH (no condensation)
Storage Temp.	-4 to 149 °F (-20 to 65 °C)
Storage Humidity	Up to 90% RH (no condensation)

HARDWARE INSTALLATION

1. One or more E300 encoders should be connected to your network and powered on with active streaming video sources. See the E300 manual.
2. One or more D300 decoders should be connected to your network, powered on and waiting for a streaming video source. See the D300 manual.
3. Connect the G300 to your network and Power the G300 on with the supplied power adapter.
4. Wait a few minutes for the G300 to initialize and use IP scanner software to get the IP address for the G300. Enter the IP address into a web browser. Note: Microsoft internet explorer and Edge are not supported. We recommend Chrome. See the section on NETWORK CONTROL for information on using the integrated web page controls.



NETWORK CONTROL

1. Enter the G300 IP address into a web browser. Note: Microsoft internet explorer and Edge are not supported. We recommend Chrome.
2. When the webpage opens it will have completed a scan of your network and should display your encoders and decoders. The Encoders are listed up and down in a column on the left side. The decoders are listed left to right near the top.
3. For convenience if you place your mouse cursor over the name of an encoder or decoder and left click a window for that device will open. Under the General tab there is a field titled “Board Name:” You can name the device here with something helpful in identifying the location or video stream like “Lobby” or “Front dining area”. See Figure 6-1.

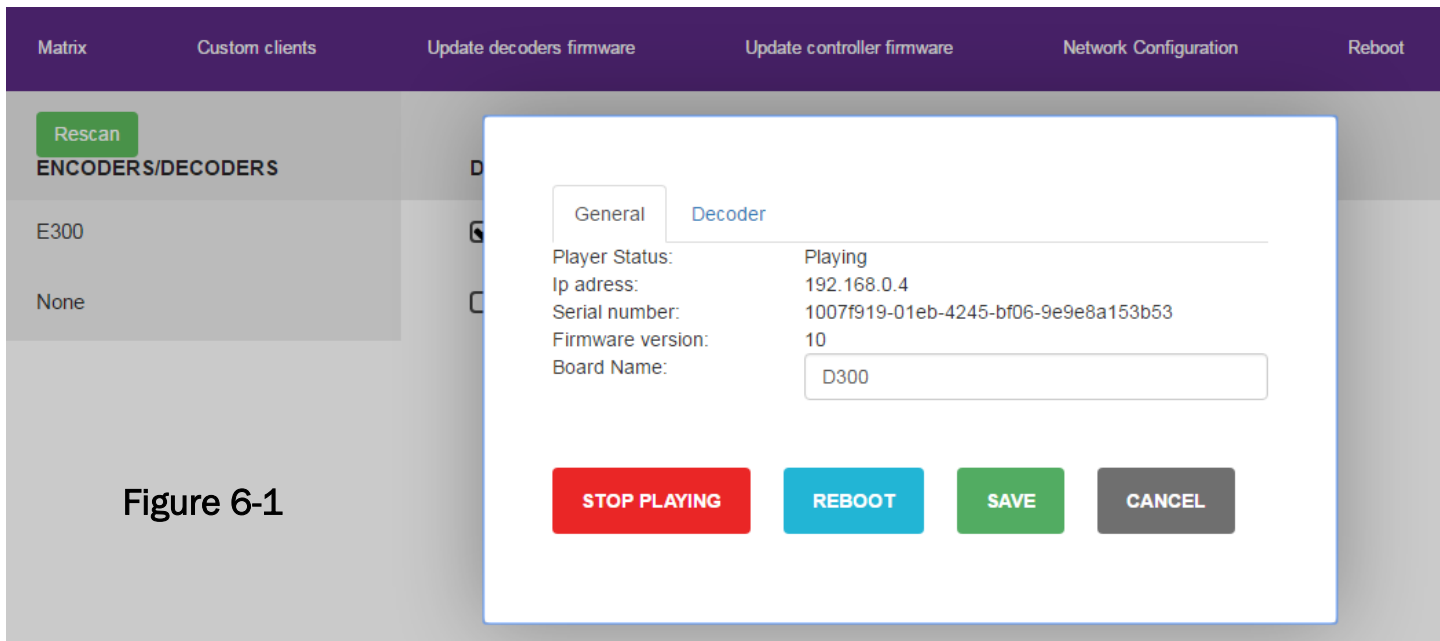


Figure 6-1

4. You connect decoders to encoders by clicking on the box at the intersection between them in the matrix. In the example shown in Figure 6-2 The stream on the encoder named E300-1 is being sent to decoders D300-1 and D300-2. The stream on encoder E300-2 is being sent to D300-3. The stream on E300-3 is being sent to D300-4 and D300-5.

Matrix	Custom clients	Update decoders firmware	Update controller firmware	Network Configuration	Reboot	Firmware version: 10
<p>Rescan</p> <p>ENCODERS/DECODERS</p>		D300-1	D300-2	D300-3	D300-4	D300-5
E300-1		<input checked="" type="checkbox"/>	<input checked="" type="checkbox"/>	<input type="checkbox"/>	<input type="checkbox"/>	<input type="checkbox"/>
E300-2		<input type="checkbox"/>	<input type="checkbox"/>	<input checked="" type="checkbox"/>	<input type="checkbox"/>	<input type="checkbox"/>
E300-3		<input type="checkbox"/>	<input type="checkbox"/>	<input type="checkbox"/>	<input checked="" type="checkbox"/>	<input checked="" type="checkbox"/>
None		<input type="checkbox"/>	<input type="checkbox"/>	<input type="checkbox"/>	<input type="checkbox"/>	<input type="checkbox"/>

Figure 6-2

5. Click on the name of each decoder and click the “START PLAYING” button to display the video. There will be a short delay before this takes effect. If the red button says “STOP PLAYING the video is already streaming.

LIMITED WARRANTY STATEMENT

A. Extent of limited warranty

Smart-AVI Technologies, Inc. warrants to the end-user customers that the Smart-AVI product specified above will be free from defects in materials and workmanship for the duration of 1 year, which duration begins on the date of purchase by the customer. Customer is responsible for maintaining proof of date of purchase.

Smart-AVI limited warranty covers only those defects which arise as a result of normal use of the product, and do not apply to any:

- a. Improper or inadequate maintenance or modifications
- b. Operations outside product specifications
- c. Mechanical abuse and exposure to severe conditions

If Smart-AVI receives, during applicable warranty period, a notice of defect, Smart-AVI will at its discretion replace or repair defective product. If Smart-AVI is unable to replace or repair defective product covered by the Smart-AVI warranty within reasonable period of time, Smart-AVI shall refund the cost of the product.

Smart-AVI shall have no obligation to repair, replace or refund unit until customer returns defective product to Smart-AVI.

Any replacement product could be new or like new, provided that it has functionality at least equal to that of the product being replaced.

Smart-AVI limited warranty is valid in any country where the covered product is distributed by Smart-AVI.

B. Limitations of warranty

To the extent allowed by local law, neither Smart-AVI nor its third party suppliers make any other warranty or condition of any kind whether expressed or implied with respect to the Smart-AVI product, and specifically disclaim implied warranties or conditions of merchantability, satisfactory quality, and fitness for a particular purpose.

C. Limitations of liability

To the extent allowed by local law the remedies provided in this warranty statement are the customers sole and exclusive remedies.

To the extent allowed by local law, except for the obligations specifically set forth in this warranty statement, in no event will Smart-AVI or its third party suppliers be liable for direct, indirect, special, incidental, or consequential damages whether based on contract, tort or any other legal theory and whether advised of the possibility of such damages.

D. Local law

To the extent that this warranty statement is inconsistent with local law, this warranty statement shall be considered modified to be consistent with such law.



NOTICE

The information contained in this document is subject to change without notice. SmartAVI makes no warranty of any kind with regard to this material, including but not limited to, implied warranties of merchantability and fitness for particular purpose. SmartAVI will not be liable for errors contained herein or for incidental or consequential damages in connection with the furnishing, performance or use of this material. No part of this document may be photocopied, reproduced, or translated into another language without prior written consent from SmartAVI Technologies, Inc.

20170525



Designed and Manufactured in the USA

800.AVI.2131

Tel: (818) 503-6200 | Fax: (818) 503-6208
11651 Vanowen St. North Hollywood, CA 91605

SmartAVI.com