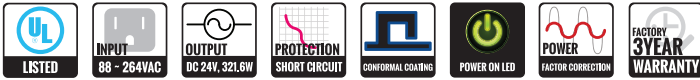




VZ-DC24-320 FEATURES & HIGHLIGHTS

- AC Input - 88 ~ 264V AC (124 ~ 370V DC), 47 ~ 63Hz
- DC Output - 24V DC / 320 W
- Built-in Active PFC function, Power Factor > 0.95
- A Low Profile Enclosed Power Supply with PFC Function
- Over Voltage / Overload / Over current / Short-Circuit Protection
- 30mm Low Profile Design for 1U Installation
- Conformal Coating and Green LED per Output
- UL_c/US listed

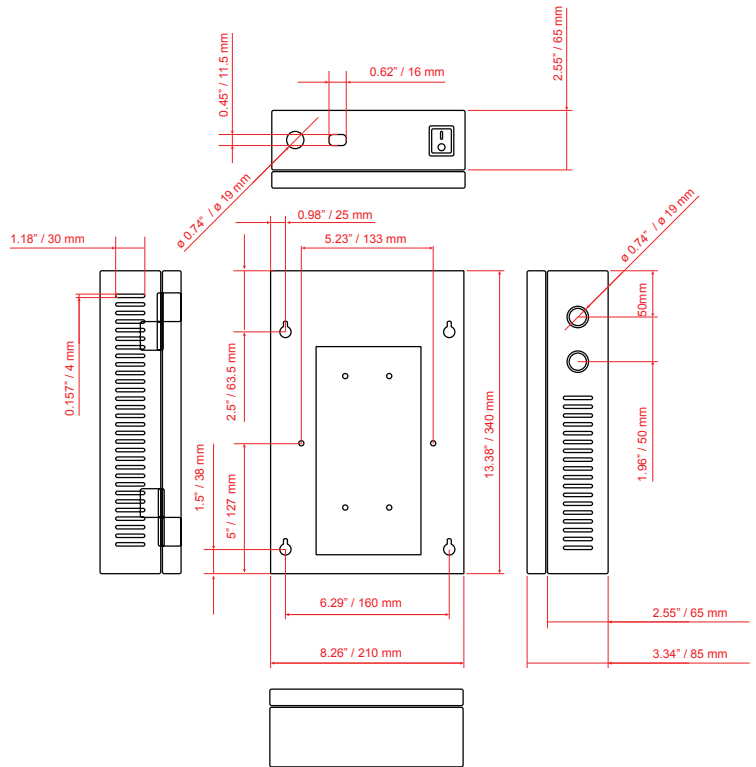


Designed specifically for ViewZ public view monitor model:



| MODEL # | VZ-DC24-320 |
|--|---|
| FEATURES | |
| Input Voltage | 88 ~ 264V AC / 124 ~ 370V DC, 47 ~ 63 Hz |
| Output Voltage | DC 24V / 321.6 W |
| Output Voltage Adjustment Range | 20 ~ 26.4V |
| Total Output Current / Range | 13.4 A / 0 ~ 13.4A |
| PROTECTION | |
| Overload | 105 ~ 135% rated output power |
| Type | Hiccup mode, recovers automatically after fault condition is removed |
| Over voltage | 27.6 ~ 32.4V |
| Type | Shut down o/p voltage, Power Recovery |
| Over temperature | Shut down o/p voltage, Recovers automatically after temperature goes down |
| DIMENSIONS & WEIGHT | |
| Net Dimensions (Width x Height x Length) | 8.26" x 13.38" x 3.34" / 210 x 340 x 85 mm |
| Gross Dimensions | 11.75" x 17.5" x 7" / 298.45 x 444.5 x 177.8 mm |
| Net Weight / Gross Weight | 8.2 lbs (3.7 kg) / 9.7 lbs (4.4 kg) |
| GENERAL | |
| Regulations SAFETY STANDARDS | UL/CUL |
| Operating Humidity | 20 ~ 90% RH. Non-condensing |
| Storage Humidity | 10 ~ 95% RH. Non-condensing |
| Operating Temperature | -22°F ~ 158°F / -30°C ~ +70°C |
| Storage Temperature | -40°F ~ 185°F / -40°C ~ +85°C |
| Temperature Coefficient | ±0.03%/°C (0°C ~ 50°C) |
| Vibration | 10 ~ 500Hz, 2G 10min./1cycle, 60min. each along X, Y, Z axes |
| MTBF. | 206.5K hrs min. MIL-HDBK-217F (25°C) |

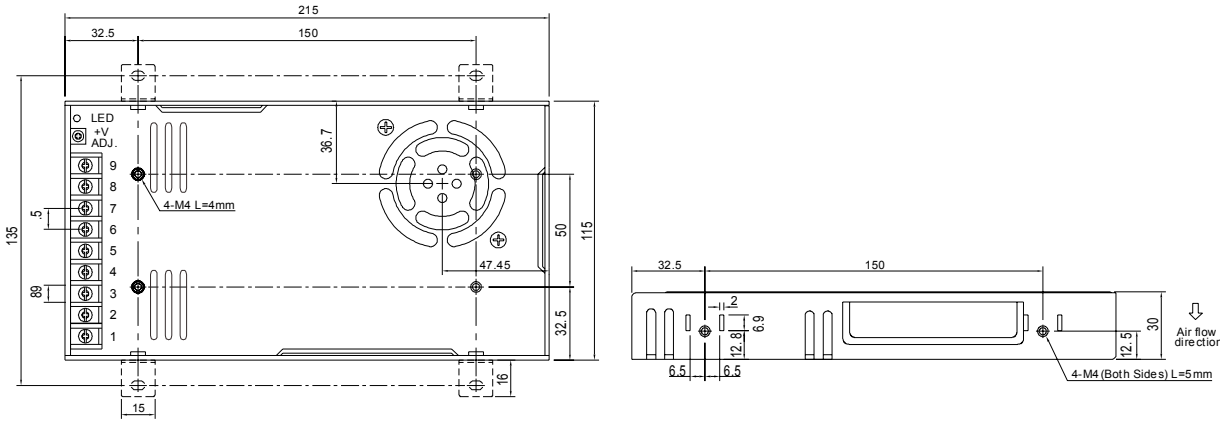
DIMENSIONS



Contact ViewZ

- Address : 177 W. Orangethorpe Ave., Placentia, CA 92870
- Phone : (714) 996-1177, Fax : (714) 996-1138
- Sales : sales@viewzusa.com
- Specification subject to change without notice.

MECHANICAL SPECIFICATION



RECOMMENDED OPERATION DISTANCE

**18AWG is highly recommended to ensure operation distance as shown in the charts*

23" HD-PVMN & IP-PVMN - 3 MONITORS - VZ-PVM-Z2B3N, Z2W3N, I2B3N & I2W3N

| Cable Type - 18AWG (Current : 12~19 A) | 1 Set of HD-PVMN / IP-PVMN | | | 2 Set of HD-PVMN / IP-PVMN | | | 3 Set of HD-PVMN / IP-PVMN | | |
|--|----------------------------|--------|--------|----------------------------|--------|--------|----------------------------|--------|--------|
| | DC 24V | DC 27V | Max. V | DC 24V | DC 27V | Max. V | DC 24V | DC 27V | Max. V |
| 100 ft / 30.48 m | tested | tested | tested | tested | tested | tested | tested | tested | tested |
| 150 ft / 45.72 m | tested | tested | tested | tested | tested | tested | tested | tested | tested |
| 200 ft / 60.96 m | tested | tested | tested | tested | tested | tested | tested | tested | tested |
| 250 ft / 76.20 m | tested | tested | tested | tested | tested | tested | tested | tested | tested |
| 300 ft / 91.44 m | | tested | tested | | tested | tested | | tested | tested |
| 350 ft / 106.68 m | | | tested | | | tested | | | tested |

Input : Power Source output terminal
Output : Set input terminal

27" HD-PVMN & IP-PVMN - 3 MONITORS - VZ-PVM-Z3B3N, Z3W3N, I3B3N & I3W3N

| Cable Type - 18AWG (Current : 12~19 A) | 1 Set of HD-PVMN / IP-PVMN | | | 2 Set of HD-PVMN / IP-PVMN | | | 3 Set of HD-PVMN / IP-PVMN | | |
|--|----------------------------|--------|--------|----------------------------|--------|--------|----------------------------|--------|--------|
| | DC 24V | DC 27V | Max. V | DC 24V | DC 27V | Max. V | DC 24V | DC 27V | Max. V |
| 100 ft / 30.48 m | tested | tested | tested | tested | tested | tested | tested | tested | tested |
| 150 ft / 45.72 m | tested | tested | tested | tested | tested | tested | tested | tested | tested |
| 200 ft / 60.96 m | tested | tested | tested | tested | tested | tested | tested | tested | tested |
| 250 ft / 76.20 m | | tested | tested | | tested | tested | | tested | tested |
| 300 ft / 91.44 m | | | | Not Recommended | | | | | |
| 350 ft / 106.68 m | | | | Not Recommended | | | | | |

32" HD-PVMN & IP-PVMN - 3 MONITORS - VZ-PVM-Z4B3N, Z4W3N, I4B3N & I4W3N

| Cable Type - 18AWG (Current : 12~19 A) | 1 Set of HD-PVMN / IP-PVMN | | | 2 Set of HD-PVMN / IP-PVMN | | | 3 Set of HD-PVMN / IP-PVMN | | |
|--|----------------------------|--------|--------|----------------------------|--------|--------|----------------------------|--------|--------|
| | DC 24V | DC 27V | Max. V | DC 24V | DC 27V | Max. V | DC 24V | DC 27V | Max. V |
| 100 ft / 30.48 m | tested | tested | tested | tested | tested | tested | tested | tested | tested |
| 150 ft / 45.72 m | tested | tested | tested | tested | tested | tested | tested | tested | tested |
| 200 ft / 60.96 m | | tested | tested | | tested | tested | | tested | tested |
| 250 ft / 76.20 m | | | | Not Recommended | | | | | |
| 300 ft / 91.44 m | | | | Not Recommended | | | | | |
| 350 ft / 106.68 m | | | | Not Recommended | | | | | |

PRECAUTIONS

- Installation and service should be performed only by qualified service personnel and should conform to all local codes.
- To reduce the risk of electric shock or fire, do not expose this equipment to rain or moisture.
- Always connect ground first and remove last
- This equipment shall be installed in a manner which prevents unintentional operation by employees, cleaning crew, or others working in the premises.
- To prevent faulty operation, ensure that all wiring is routed and secured to prevent accidental open or short-circuit conditions.
- This equipment is not intended for use within the patient care areas of a health care facility.

Contact ViewZ

- Address : 177 W. Orangethorpe Ave., Placentia, CA 92870
- Phone : (714) 996-1177, Fax : (714) 996-1138
- Sales : sales@viewzusa.com
- Specification subject to change without notice.