

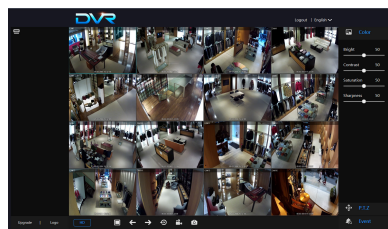


MODEL #		VZ-16HVR
<b>VIDEO</b>		
Compression		H.264 (High Profile)
Encoding / Decoding		16 CH × 1080P@15fps
Input	Pure Analog	16 CH 1080p
	Mixed	15CH 1080P (Analog) + 1CH 1080P (Network) 14CH 1080P (Analog) + 2CH 1080P (Network) 1CH 1080P (Analog) + 15CH 1080P (Network)
	Pure Network	16CH 1080P / 16CH 960H / 16CH 3M / 16CH 5M
Output	Main Monitor	HDMI and VGA (1920x1080)
<b>AUDIO</b>		
Codec		G.711A
Two Way Audio		Support
<b>RECORD &amp; PLAYBACK</b>		
Record		Manual, Event, Timer
Playback		8CH (Pure Local Input Mode)
Hard Drive		2 SATA (Each Supports MAX 6TB)
<b>STORAGE &amp; BACKUP</b>		
Space Usage	1920 x 1080 (1080p) Input	20 ~ 30Gb / Day by Channel- 15 fps/ch
	1280x720 (720p) Input	0 ~ 20 Gb / Day by Channel- 15 fps/ch
	960H (Analog) Input	12 ~ 20Gb / Day by Channel- 15 fps/ch
	Audio	691.2 MB / Day by Channel
Backup Device		USB / HDD
<b>OPERATION</b>		
Pentaplex		Live/Record/Playback/Backup/Network
<b>ALARM</b>		
Sensor Input		4 CH
Alarm Output		1 CH
<b>SERIAL</b>		
PTZ Control		RS485, Support Multiple PTZ Protocols - 1EA
<b>NETWORK</b>		
Interface		10/100 Base-T
<b>VIEWER</b>		
App Viewer		iOS / Android
Web Viewer		Windows
<b>BACKUP &amp; STORAGE</b>		
Storage	Capacity of 1 HDD	6 TB ( Max )
	Internal HDDs	2 EA ( w/o ODD )
Backup	Media	USB External HDD, Network
	Format	BMP, AVI, Proprietary Format
<b>INTERFACE</b>		
Video Input		16 CH BNC ( AHD / TVI / CVBS )
Video Output		1 CH VGA, 1 CH HDMI
Audio Input / Output		6 CH RCA / 1 CH RCA
Network Interface		1 EA - RJ45 10M/100M Adaptive Ethernet Port
USB		Front - 1 EA, Rear - 2 EA
PTZ Control		RS485 - 1 EA
<b>WEIGHT &amp; DIMENSIONS</b>		
Outline Dimension	(W x H x D) (inch)	13.77 x 11.61 x 1.77
	(W x H x D) (mm)	350.0 x 295.0 x 45.0
Net Weight / Gross Weight		4.40 lbs ( 2.0 kg ) / 6.4 lbs ( 2.90 kg )
<b>GENERAL</b>		
Power	Electrical Ratings	DC 12V, 2A (1 HDD) / 4A (2 HDD)
	Consumption	< 15 W (Excluding HDD)
Operating Temperature		14°F - 104°F / -10 °C ~ 45°C
Operating Humidity		20 % - 80 % (Non-condensing)
Atmospheric pressure		86 kPa to 106 kPa
In the box		Manual, USB Mouse, SATA II cables, DC 12V Power Supply, Internal HDD Bracket & Screws Internal HDD Bracket & Screws

### VZ-16HVR ADVANTAGES

- AHD/TVI 1080P front-end real-time encoding
- Each BNC accepts AHD / TVI / CVBS analog
- Also accepts IP camera signals at maximum 1080p
- App provides easy network setup & remote monitoring
- H.264 high profile compression
- PENTAPLEX: simultaneous live and playback while still continuing to record, network transfer, and backup
- App Available at GOOGLE PLAY STORE for Android devices and APP STORE for Apple devices

### ACCESS VIEWER



#### Web Viewer

- ▶ Live
- ▶ Playback
- ▶ Remote Setup
- ▶ Windows ( Firefox )



iOS



Android

#### Free Android/iOS App Viewer

- ▶ Live
- ▶ Playback

### Contact ViewZ

- Address : 177 W. Orangethorpe Ave., Placentia, CA 92870
- Phone : (714) 996-1177, Fax : (714) 996-1138
- Sales : sales@viewzusa.com
- Specification subject to change without notice.