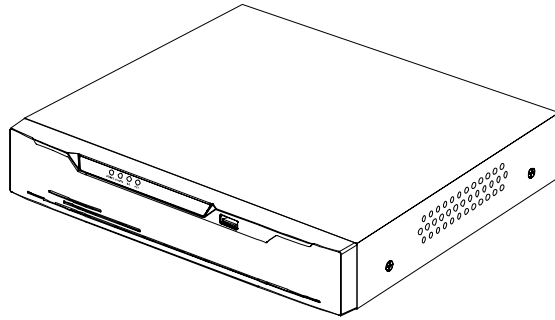
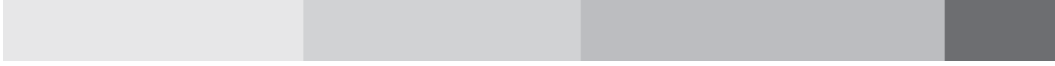


Hybrid Digital Video Recorder User Manual



Issue **V1.0**
Date **2016-12-22**

About This Document

Purpose

This document describes the hybrid digital video recorder (HDVR) in terms of product features, hardware installation, network access, network configuration, routine maintenance, and common fault analysis.




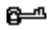

Intended Audience

This document is intended for:

- Technical support engineers.
- Maintenance engineers
- Network Video Manger System operators

Symbol conventions

The symbols that may be found in this document are defined as follows:

Symbol	Description
 DANGER	Alerts you to a high risk hazard that could, if not avoided.
 WARNING	Alerts you to a medium or low risk hazard that could, if not avoided, result in moderate or minor injury.
 CAUTION	Alerts you to a potentially hazardous situation that could, if not avoided, result in equipment damage, data loss, performance deterioration, or unanticipated results.
 TIP	Provides a tip that may help you solve a problem or save time.
 NOTE	Provides additional information to emphasize or supplement important points in the main text.

Important Statement

Users are required to enable and maintain the lawful interception (LI) interfaces of video surveillance products in strict compliance with relevant laws and regulations. Installation of surveillance devices in an office area by an enterprise or individual to monitor employee behavior and working efficiency outside the permitted scope of the local law and use of video surveillance devices for eavesdropping of illegal purposes constitute behaviors of unlawful interception.

Contents

About This Document	i
Contents.....	ii
Preface.....	1
Important Notes.....	1
About This User Manual	1
Installation Environment and Precautions	1
2 Basic Operations	3
Powering on the Device	3
2.2 Powering off the Device.....	4
2.3 Logging In to the System	4
2.4 Adding Cameras	5
3 Quick Navigation.....	6
3.1 Playback.....	7
3.2 Search.....	8
3.3 Picture Grid	10
3.4 Event	11
3.5 Main Menu	11
4 Camera Management	12
4.1 Camera Management.....	12
4.1.1 Binding a Camera.....	12
4.1.2 Unbinding a Camera	13
4.2 Picture Param	14
4.3 Encode Param.....	15
4.4 Alarm Setup.....	16
4.5 Motion Detection.....	17
4.6 Privacy Area	18
5 Setting.....	19
5.1 Basic.....	19
5.1.1 System.....	19
5.1.2 Time	20

5.2 Alarm.....	21
5.2.1 Surveillance.....	21
5.2.2 Sensor.....	22
5.3 Record.....	22
5.4 Privacy.....	24
5.4.1 Protect.....	24
5.4.2 Modify Password.....	25
5.5 Network.....	25
5.5.1 IPv4.....	25
5.5.2 DDNS.....	27
5.6 Disk.....	28
5.6.1 Viewing Disk Information.....	28
5.6.2 Clearing Disk Data.....	29
5.7 App.....	29
5.8 Shutdown.....	30
6 Log Center.....	31
7 Alarm.....	33
7.1 Event.....	33
7.2 Timeline.....	34
7.3 Clear alarm.....	35

Preface

Important Notes

Thank you for choosing the HDVR. Please read the user manual carefully before using this product.

The HDVR is a complex system-based device. To avoid misoperations and malfunctions caused by environmental factors and human factors during installation, commissioning, and application, note the following points when installing and using this product:

Read the user manual carefully before installing and using this product.

- Use Seagate or Western Digital hard disks as the storage devices of the HDVR with high stability and competitive price/performance ratios (the quality of hard disks sold on markets varies greatly with different brands and models).
- Do not open the enclosure of this product unless performed by a professional person to avoid damage and electric shock.
- We are not liable for any video data loss caused by improper installation, configuration, operation, and hard disk errors.

About This User Manual

Please note the following points before using this user manual:

- This user manual is intended for persons who operate and use the HDVR.
- The information in this user manual applies to the full series HDVR, here uses 4ch, 1HDD HDVR as an example for description.
- Read this user manual carefully before using the HDVR and follow the methods described in this manual when using the HDVR.
- If you have any doubts when using the HDVR, contact your product seller.
- In the case of product upgrade, the information in this document is subject to change without notice.

Installation Environment and Precautions

Installation environment

Table 1-1 defines the installation environment of the HDVR.

Table 1-1 Installation environment

Item	Description
Electromagnetism	The HDVR meets the national standards of electromagnetic radiation and does not cause harm to the human body.
Temperature	-10°C to +45°C
Humidity	20% to 80%
Atmospheric pressure	86 kPa to 106 kPa
Power supply	12V 2A(1 HDD)或 12V 4A(2 HDDs)
Power consumption	<15W (excluding the hard disk)

Installation precautions

Note the following points when installing and operating the HDVR:

- The power adapter of the HDVR uses DC12V \pm 20% input. Do not use the HDVR when voltage is too high or too low.
- Install the HDVR horizontally.
- Avoid direct sunlight on the HDVR and keep away from any heat sources and hot environments.
- Connect the HDVR to other devices correctly during installation.
- The HDVR is not configured with any hard disk upon delivery. Install one or more hard disks when using the HDVR for the first time.
- The HDVR identifies hard disk capacity automatically and supports mainstream hard disk models. You are advised to use good brands of hard disk so that the HDVR can operate stably and reliably.

Other precautions

- Clean the HDVR with a piece of soft and dry cloth. Do not use chemical solvents.
- Do not place objects on the HDVR.

The HDVR meets the national standards of electromagnetic radiation and does not cause electromagnetic radiation to the human body.

2 Basic Operations

Powering on the Device



CAUTION

- Ensure that the HDVR is correctly connected to a power supply, and a display is correctly connected to the high definition multimedia interface (HDMI) or video graphics array (VGA) port of the HDVR before power-on.
- In some environments, abnormal power supply may cause the failure of the HDVR to work properly and even damage the HDVR in severe cases. It is recommended to use a regulated power supply to power the HDVR in such environments.

After the HDVR is connected to a power supply, the power indicator is steadily on. Start the HDVR. The real-time video screen is displayed, as shown in Figure 2-1.

Figure 2-1 Real-time video screen



NOTE

Users need to provide a hard disk for the HDVR. The hard disk is strictly detected during device startup. If the detection result failed, the possible causes are as follows:

- The hard disk is new and is not formatted. Log in to the system and format the hard disk.
- The hard disk is formatted, but the file system is inconsistent with the file system supported by the HDVR. Format the hard disk.
- The hard disk is damaged.

2.2 Powering off the Device

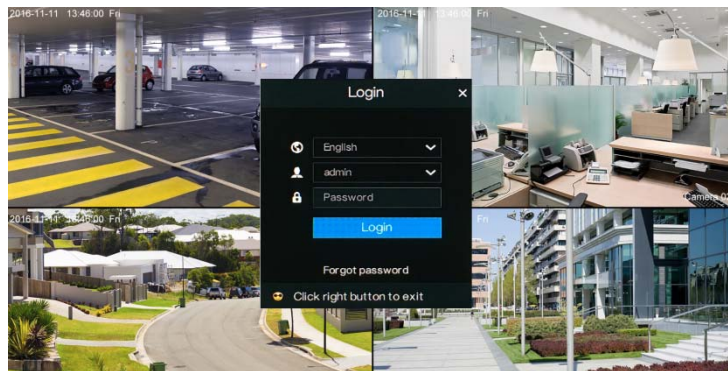
Click the main menu and choose **Setting > Shutdown** to power off the HDVR. If there is a power switch on the rear panel of the HDVR, you can turn off the power switch to disconnect the HDVR from the power supply.

2.3 Logging In to the System

Logging In to the Device

Step 1 On the HDVR login page, select the language, as shown in Figure 2-2.

Figure 2-2 Login page



Step 2 Enter the username and password.

**NOTE**

- The username and password are both **admin**.
- If you forget password, click **Forgot password**. There are two methods of retrieving the password:
 1. Scan the UUID QR code on the device and send the QR code to your seller to retrieve password.
 2. Click **Send Password**. A password retrieval email will be sent to your email address (for details, see Step 2 in 5.4.1 "Protect" in 5.4 "Privacy"). Then, you can retrieve password by following operations described in the email.

Step 3 Click Login to access the main User Interface (UI).

----End

2.4 Adding Cameras

This HDVR can be connected to both analog cameras and network cameras.

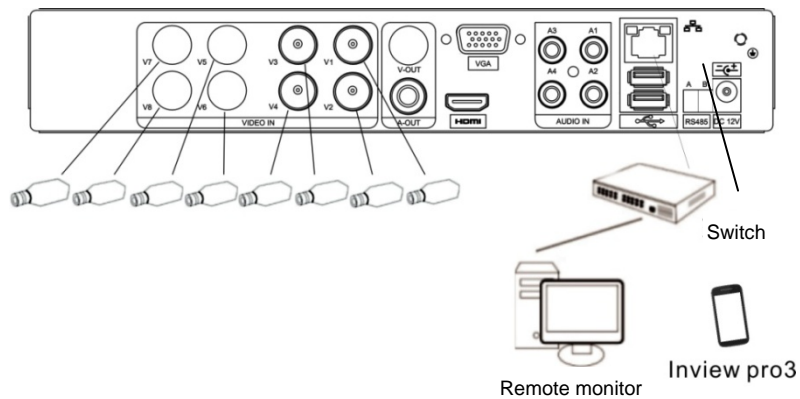
The HDVR can be directly connected to analog cameras through bayonet nut connector (BNC) cables.

After the HDVR is connected to a Dynamic Host Configuration Protocol (DHCP) network, it automatically obtains an IP address, and searches for and adds network cameras in the same network segment.

If an analog camera and network camera coexist in the same network segment, the HDVR gives preference to the access of the analog camera by default.

Figure 2-3 shows the topology of the HDVR.

Figure 2-3 HDVR topology



----End

3 Quick Navigation

After the HDVR operation screen is displayed, right-click on the screen or move the cursor to the topmost or downmost position of the HDVR screen. The HDVR floating menu bar is displayed.

A quick navigation bar is displayed in the topmost position of the HDVR screen. The navigation bar provides **Playback**, **Search**, **Picture Grid**, **Event**, main menu, and HDVR time display, as shown in Figure 3-1.

Figure 3-1 Quick navigation bar





The real-time video toolbar is displayed in the downmost position of the HDVR screen. The video tool bar provides video window switching, pan-tilt-zoom (PTZ) control, voice intercom, audio, and single-channel browse, as shown in Figure 3-2.


Figure 3-2 Real-time video toolbar





The real-time video toolbar is described as follows:


: Live button. After this button is clicked, the real-time video window is switched between the single-screen mode and multi-screen mode.

: PTZ button. After this button is clicked, the PTZ operation screen is displayed, where you can adjust the PTZ to control cameras.

: Talk button. After this button is clicked, voice intercom is enabled or disabled.

: Audio button. After this button is clicked, the audio function is enabled or disabled.

: Previous button. After this button is clicked, the window switches to single-screen mode and plays the view of the previous channel.

: Next button. After this button is clicked, the window switches to single-screen mode and plays the view of the next channel.

PTZ Operations

The PTZ control and function settings are applicable only to high-speed PTZ cameras and cameras externally connected to PTZs.

Click the PTZ button on the real-time video toolbar. The PTZ control screen is displayed, as shown in Figure 3-3. On this screen, you can set the PTZ direction, zoom, focus, camera preset position, and other parameters.

Figure 3-3 PTZ control screen

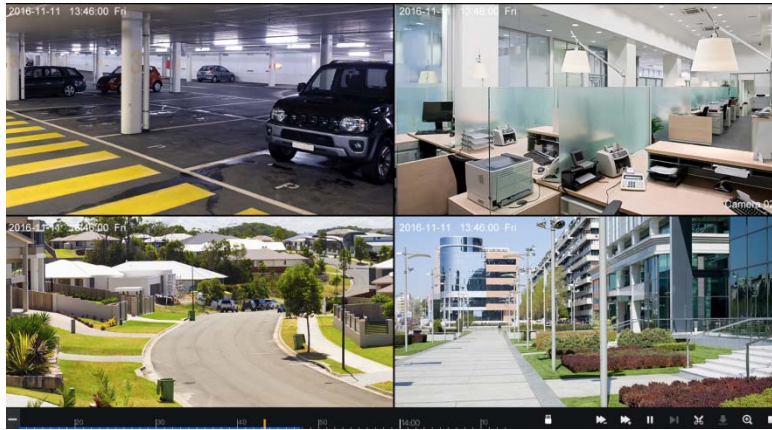


3.1 Playback

Playback refers to playing back a video.

Click **Playback** in the quick navigation bar to access the playback screen, as shown in Figure 3-4.

Figure 3-4 Playback screen



The toolbar at the bottom of the playback screen is described as follows:



: Slow play



: Fast forward



: Pause



: Backup. After this button is clicked, the video backup starts. This function is available after a USB flash drive is connected to the HDVR.



: Download. After this button is clicked, the backup ends. This function is available after the backup function is enabled.





: Magnify. After this button is clicked, the device plays a video in full-screen mode.



: Full screen off. After this button is clicked, the device returns to the real-time video screen.



: Indicates whether to insert a USB flash drive.  indicates that a USB flash drive is inserted into the HDVR.  indicates that no USB flash drive is inserted into the HDVR.

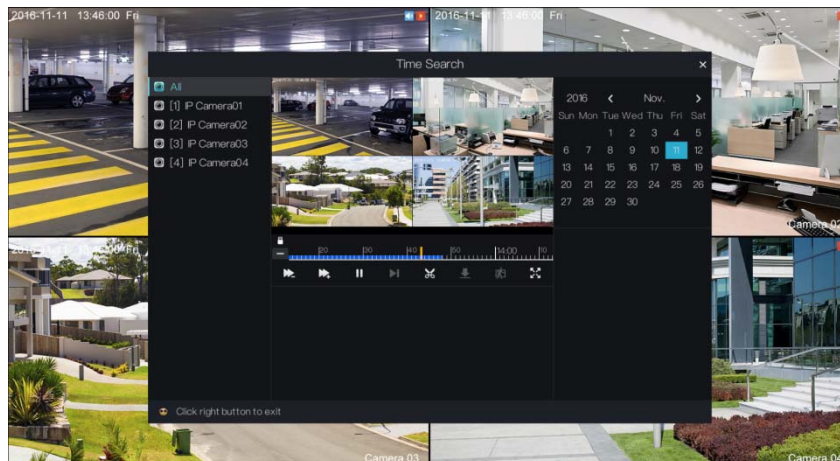
3.2 Search

Search refers to searching for a video by date and time.

Operation Description

Click **Search** in the quick navigation bar to access the search screen, as shown in Figure 3-5.

Figure 3-5 Search screen



The toolbar at the bottom of the play window is described as follows:



: Slow play



: Fast forward



: Pause



: Backup. After this button is clicked, the video backup starts. This function is available after a USB flash drive is connected to the HDVR.



: Download. After this button is clicked, the backup ends. This function is available after the backup function is enabled.



: Intelligent motion detection. After this button is clicked, the device automatically locates a moving target.



: Full screen. After this button is clicked, the device plays a video in full screen.

Operation Steps

Step 1 Select a camera in the camera list on the left side of the search screen. The video view of the selected camera is displayed in the play window.

- Step 2 Select a date in the calendar on the right side of the search screen.
- Step 3 Click **—** or **+** on the left side of the time axis below the play window to switch the time axis, and then select time. Then, the play window plays the video in the specified time range.



NOTE

- indicates that videos are searched on a minute basis.
- +** indicates that videos are searched on an hourly basis.

---End

3.3 Picture Grid


Picture grid refers to evenly dividing the video of a channel by time range and searching for a video based on thumbnails divided by time range.

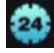
Click **Picture Grid** on the quick navigation bar to access the picture grid screen, as shown in Figure 3-6.

Figure 3-6 Picture grid screen



Operation Steps

- Step 1 Select a camera in the camera list on the left side of the picture grid screen. Videos shot by the camera in the earliest time range on the current day are displayed as thumbnails in the window on the right side.
- Step 2 Select a day of a week on the right of .

- Step 3 Select a time range on the right of . For example, if you select **7**, it indicates that the selected time range is 07:00:00-08:00:00. Videos in this time range are displayed as 12 thumbnails at an interval of 5 minutes in the window on the right.
- Step 4 Select a required thumbnail, double-click it or right-click it and choose **Play** from the shortcut menu to play the video.

----End

3.4 Event

Click **Event** on the quick navigation bar to access the alarm event screen. For details about the screen and operations on this screen, see 7.1 "Event".

3.5 Main Menu


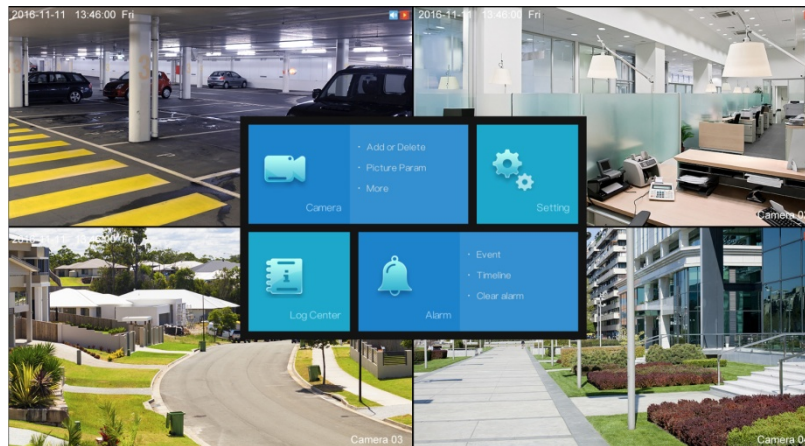
Click  in the upper right corner on the main UI. The main menu as shown in Figure 3-7 is displayed. The main menu includes **Camera**, **Setting**, **Log Center**, and **Alarm**.

Figure 3-7 HDVR main menu



----End

4 Camera Management

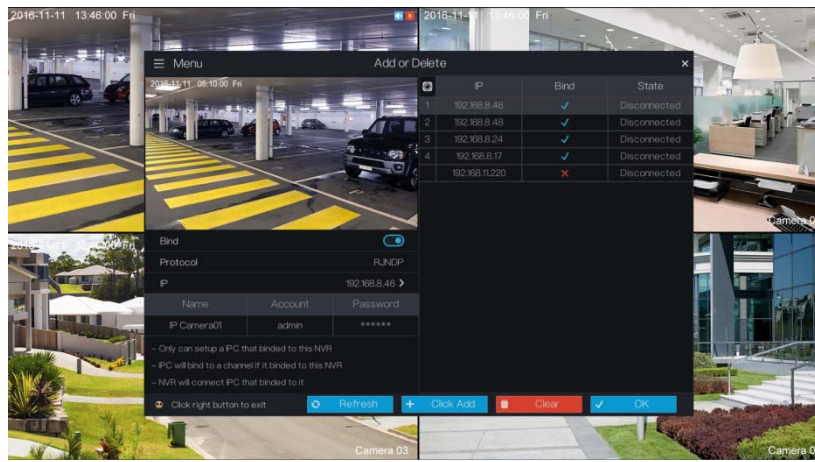
Camera management mainly involves analog cameras and coaxial high-definition cameras. Cameras can be directly connected to input channels of the HDVR. When analog cameras are insufficient, the HDVR automatically searches for and adds (that is, binds) network cameras in the same Local Area Network (LAN).

Camera management includes camera adding (binding) or deletion (unbinding), picture parameter settings, encode management, motion detection, and privacy masking.

Operation Description


Click **Camera** in the main menu to access the camera management screen, as shown in 0.

Figure 4-1 Camera management screen




4.1 Camera Management

4.1.1 Binding a Camera

On the camera management screen, check the binding status of network cameras in the camera list on the right side. If the binding status of a network camera is , this camera needs to be bound.

Operation Steps

- Step 1 Select a network camera to be bound in the camera list on the right side. The real-time video and basic information of the network camera are displayed on the left side.
- Step 2 Click the button next to **Bind** below the play window. The button turns blue and the binding status is changed to  in the camera list on the right side, indicating that the camera is bound successfully.




NOTE

- Analog addresses directly connected to the HDVR are bound preferentially and are assigned the IP address 127.0.0.1. When channels of the HDVR are insufficient for the access of analog cameras, they automatically occupy the channels of network cameras.
- If all channels of the HDVR are bound to cameras, you need to unbind cameras that do not need to be bound.
- You can choose Click Add to automatically add cameras of all channels.
- If a network camera is added, enter the username and password of the camera below the play window. The video of the camera can be viewed only after successful login.

4.1.2 Unbinding a Camera

Operation Steps

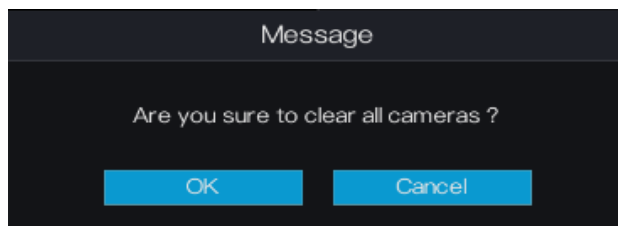
- Step 1 Select a camera to be unbound in the camera list on the right side. Information about the camera is displayed below the play window.
- Step 2 Click the button next to **Bind** below the play window. The button turns white and the binding status is changed to  in the camera list on the right side, indicating that the camera is unbound successfully.



NOTE

If you click **Clear**, a message as shown in Figure 4-2 is displayed. Click **OK** to unbind network cameras of all channels of the HDVR.

Figure 4-2 Unbinding confirmation message



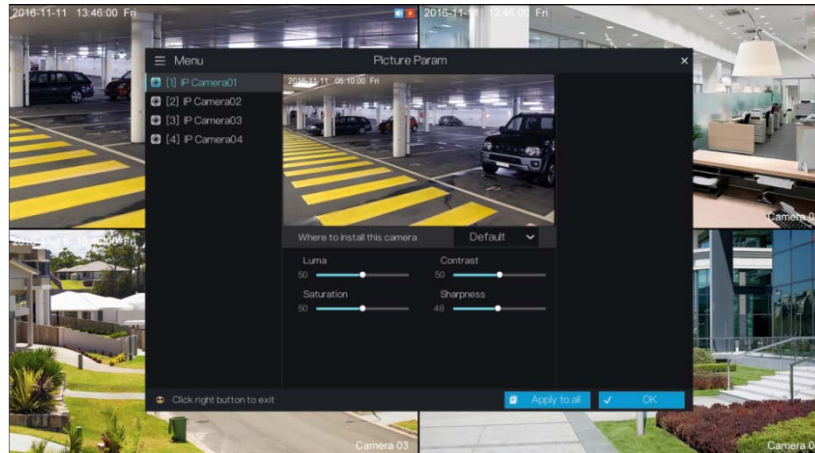
4.2 Picture Param

Picture parameters refer to basic attributes of a picture, including the luminance, saturation, sharpness, and contrast. You can set picture parameters for each channel based on scenarios.

Operation Description

Click **Picture Param** next to **Camera** in the main menu or click **Menu** in the upper left corner of the camera management screen and choose **Picture Param** to access the **Picture Param** screen, as shown in Figure 4-3.

Figure 4-3 Picture Param screen



The picture parameters are described as follows:

Luma: picture luminance

Saturation: brilliance of the picture color

Contrast: picture transparency

Sharpness: picture clarity

Operation Steps

- Step 1 Select a camera in the camera list on the left side of the Picture Param screen.
- Step 2 Select camera scenario from the drop-down list. The default values of picture parameters vary with scenarios.
- Step 3 Set the camera luminance, contrast, saturation, and sharpness.
- Step 4 Click **OK** to save picture parameter settings or click **Apply to all** to apply the parameter settings to cameras of all channels.

----End

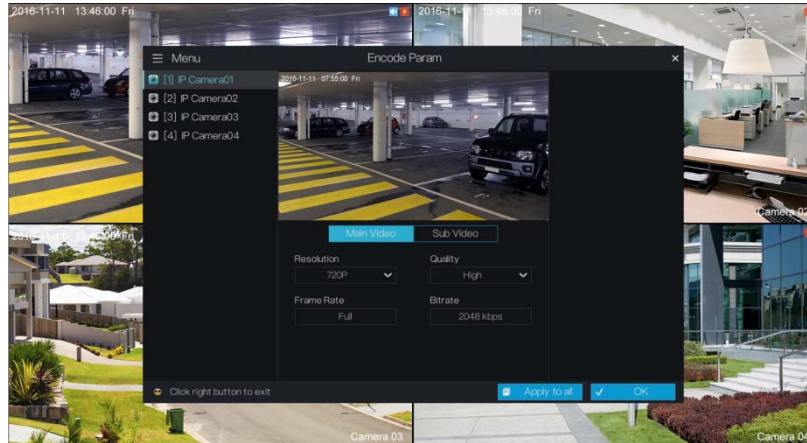
4.3 Encode Param

The system allows you to set the main video resolution, sub video resolution, and image quality (low-quality, medium-quality, high-quality, or best-quality) for cameras in a channel, and view the frame rate and stream size in **Encode Param**.

Operation Description

Click **Menu** in the upper left corner of the camera management screen and choose **Encode Param** to access the **Encode Param** screen, as shown in Figure 4-4.

Figure 4-4 Encode Param screen



Operation Steps

- Step 1 Select a camera in the camera list on the left side of the **Encode Param** screen.
- Step 2 Select **Main Video** or **Sub Video**.
- Step 3 Set **Resolution**, **Quality**, and **Bitrate**.
- Step 4 Click **OK** to save encode parameter settings or click **Apply to all** to apply the parameter settings to cameras of all channels.

----End

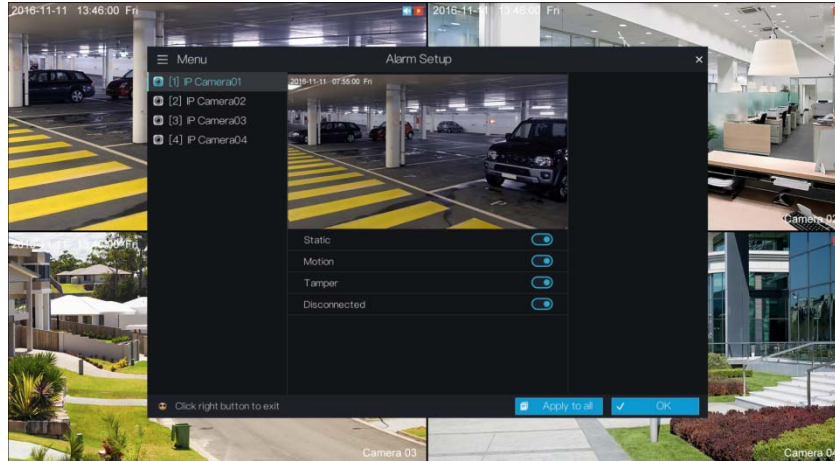
4.4 Alarm Setup

The system allows you to set alarm types for cameras of channels in **Alarm Setup**.

Operation Description

Click **Menu** in the upper left corner of the camera management screen and choose **Alarm Setup** to access the **Alarm Setup** screen, as shown in Figure 4-5.

Figure 4-5 Alarm Setup screen



The alarm setup parameters are described as follows:

Motion: An alarm is triggered when an image in a specified area changes.

Tamper: An alarm is triggered when the lens of a camera is covered.

Disconnected: An alarm is triggered when a camera is disconnected from the HDVR.

Operation Steps

- Step 1 Select a camera in the camera list on the left side of the **Alarm Setup** screen.
- Step 2 Click buttons next to **Static**, **Motion**, **Tamper**, and **Disconnected** to enable or disable the alarm function according to alarm requirements.
- Step 3 Click **OK** to save alarm settings or click **Apply to all** to apply the parameter settings to cameras of all channels.

----End

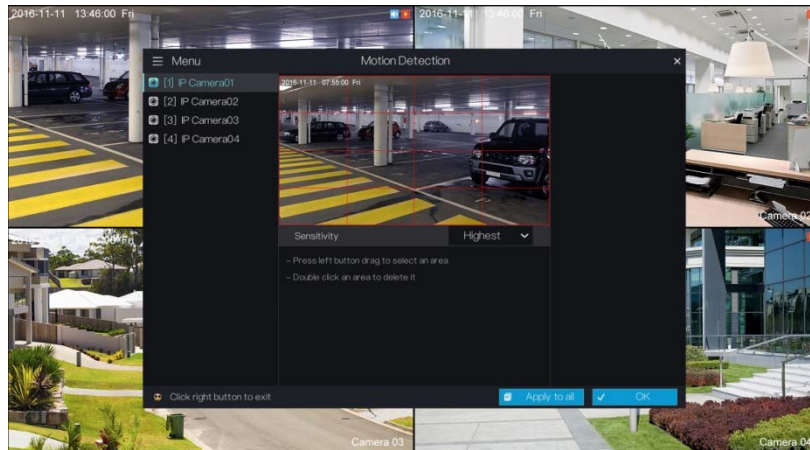
4.5 Motion Detection

Motion detection refers that an alarm is triggered when an image in a specified area changes.

Operation Description

Click **Menu** in the upper left corner of the camera management screen and choose **Motion Detection** to access the **Motion Detection** screen, as shown in Figure 4-6.

Figure 4-6 Motion Detection screen



Operation Steps

- Step 1 Select a camera in the camera list on the left side of the **Motion Detection** screen.
- Step 2 In the video window, hold down and drag the left mouse button to draw a motion detection area.
- Step 3 Select a value from the drop-down list next to **Sensitivity**.
- Step 4 Click **OK** to save motion detection settings or click **Apply to all** to apply the motion detection settings to cameras of all channels.



NOTE

After a motion detection area is selected, you can double-click it to delete the selected area.

----End

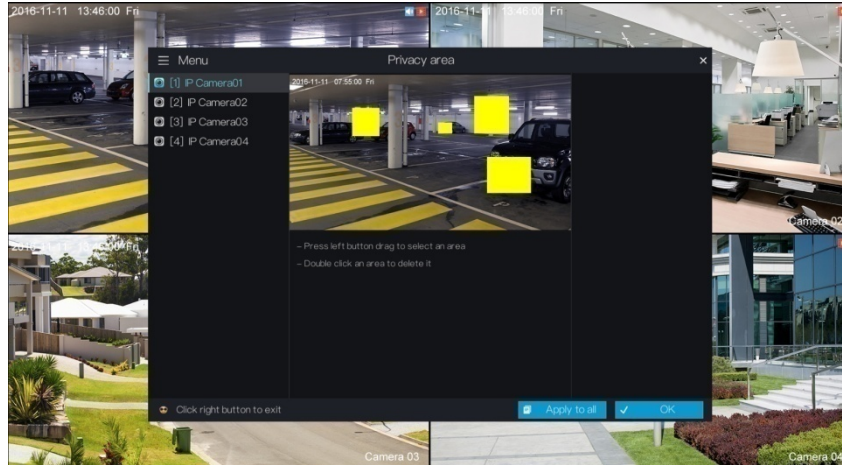
4.6 Privacy Area

The system allows you to mask images in a specified area and this area is called privacy area.

Operation Description

Click **Menu** in the upper left corner of the camera management screen and choose **Privacy area** to access the **Privacy area** screen, as shown in Figure 4-7.

Figure 4-7 Privacy Area screen



Operation Steps

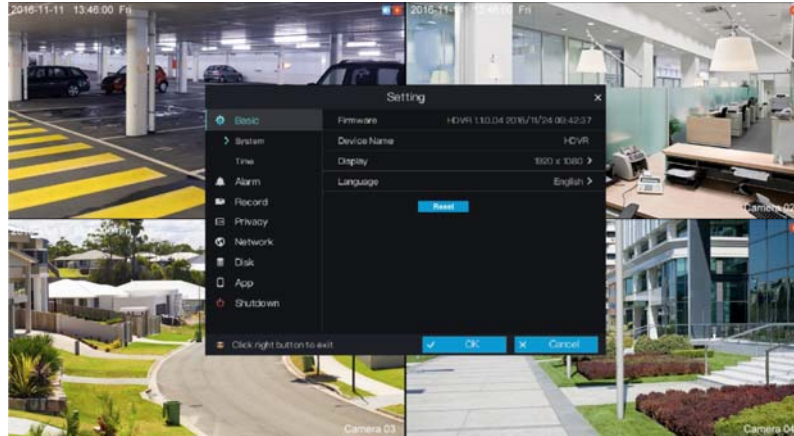
- Step 1 Select a camera in the camera list on the left side of the **Privacy area** screen.
- Step 2 In the video window, hold down and drag the left mouse button to draw a privacy area.
- Step 3 Click **OK** to save privacy area settings or click **Apply to all** to apply the privacy area settings to cameras of all channels.

----End

5 Setting

The system allows you to set basic information, alarms, video, privacy, network, disk management, and other parameters for the system in **Setting**. Figure 5-1 shows the system setting screen.

Figure 5-1 Setting screen



5.1 Basic

The system allows you to view the firmware version and device name, set the display resolution, system language, time zone, time and date, and restore factory defaults in **Basic**.

5.1.1 System

Operation Steps

- Step 1 On the **Setting** screen, choose **Basic** > **System** to access the **Setting** screen, as shown in Figure 5-1.
- Step 2 Select a proper resolution from the **Display** drop-down list based on the adopted monitor.
- Step 3 Select a required language from the **Language** drop-down list.

- Step 4 Click **Restore Defaults** to restore current settings to factory defaults.
- Step 5 Click **OK** to save system settings or click **Cancel** to cancel settings.



NOTE

After you click **Restore Defaults** and save the settings, the HDVR will restart.

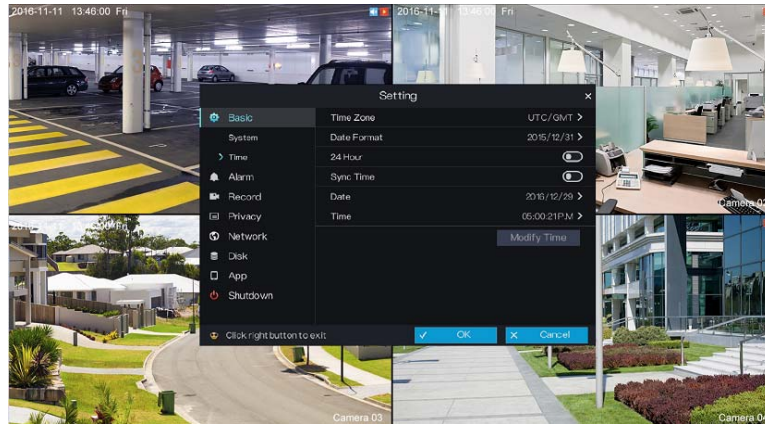
----End

5.1.2 Time

Operation Steps

- Step 1 On the **Setting** screen, choose **Basic > Time** to access the time setting screen, as shown in Figure 5-2.

Figure 5-2 Time setting screen



- Step 1 Select a required time zone from the **Time Zone** drop-down list.
- Step 2 Select a required date format from the **Date Format** drop-down list.
- Step 3 Click the button next to **24 Hour** to disable the 24-hour system. Then, the 12-hour system is enabled. If **24 Hour** is set to On, the 24-hour system is used and is enabled by default.
- Step 4 Click the button next to **Sync Time** to disable time synchronization. Time synchronization is enabled by default. Time is synchronized with the PC time.
- Step 5 After **Sync Time** is disabled, you can manually set the system time:
 - Click **Date** and scroll the mouse scroll wheel to select the year, month, and date.
 - 1. Click **Time** and scroll the mouse scroll wheel to select the hour, minute, and second.

2. Click **Modify Time** to save the time settings.
- Step 6 Click **OK** to save settings or click **Cancel** to cancel settings.
- End

5.2 Alarm

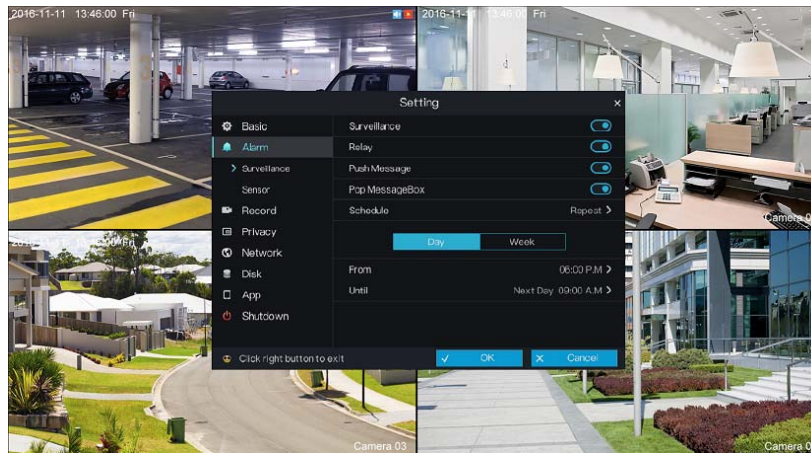
The system allows you to set alarm surveillance and alarm sensor in **Alarm**.

5.2.1 Surveillance

Operation Steps

- Step 1 On the **Setting** screen, choose **Alarm** > **Surveillance** to access the surveillance setting screen, as shown in Figure 5-3.

Figure 5-3 Surveillance setting screen



- Step 2 Click the button next to **Surveillance** to enable the surveillance function.
- Step 3 Click buttons next to **Relay**, **Push Message**, and **Pop Message Box** to enable or disable the functions.
- Step 4 Select **Full Day** or **Repeat** from the **Schedule** drop-down list.
- Step 5 If you select **Repeat**, you need to set the repeated time:
Day: Set the alarm start time and end time with a day on a daily basis.
Week: Select any one day or several days in a week to set the alarm start time and end time on a weekly basis.
- Step 6 Click **OK** to save surveillance settings or click **Cancel** to cancel settings.

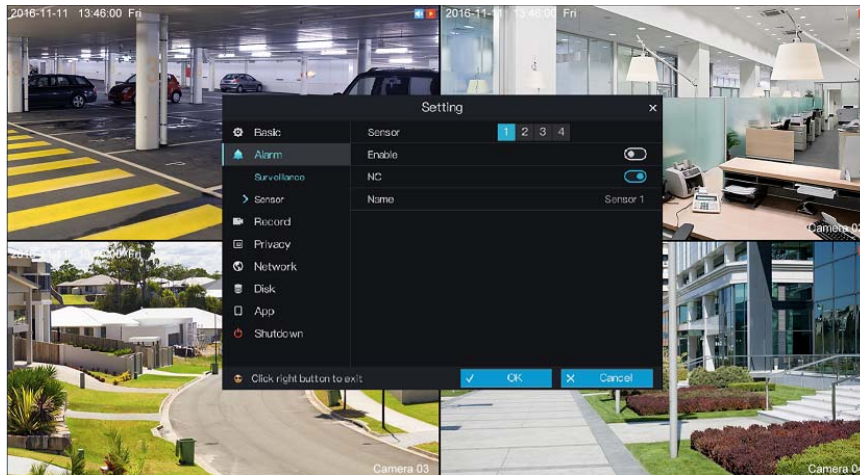
----End

5.2.2 Sensor

Operation Steps

- Step 1 On the **Setting** screen, choose **Alarm** > **Sensor** to access the sensor setting screen, as shown in Figure 5-4.

Figure 5-4 Sensor setting screen



- Step 2 Select a channel in **Sensor**.
- Step 3 Click the buttons next to **Enable** and **NC** to enable or disable the functions.
- Step 4 Click **OK** to save sensor settings or click **Cancel** to cancel settings.

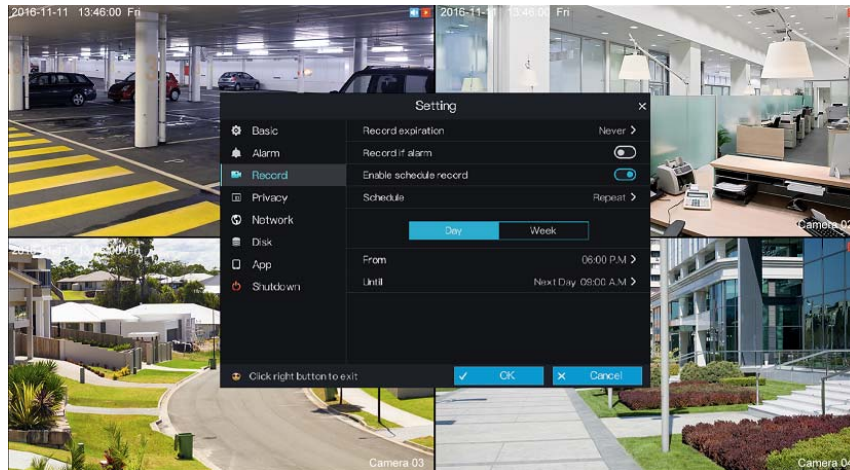
----End

5.3 Record

Operation Steps

- Step 1 On the **Setting** screen, choose **Record** to access the record screen, as shown in Figure 5-5.

Figure 5-5 Record setting screen



Step 2 Select a value from the **Record expiration** drop-down list.



NOTE

If you select one week or two weeks from the **Record expiration** drop-down list, a message indicating that some video data may be deleted and asking you whether to continue the operation, is displayed. Click **OK** and select one week or two weeks.

Step 3 Click the button next to **Record if alarm** to enable or disable the function of recording a video if an alarm is generated.

Step 4 Click the button next to **Enable schedule record** to enable or disable the function of scheduled recording. The function is enabled by default.

Step 5 Set Schedule.

Day: Set the recording start time and end time on a daily basis.

Week: Select any one day or several days in a week to set the recording start time and end time on a weekly basis.

Step 6 Click **OK** to save record settings or click **Cancel** to cancel settings.

----End

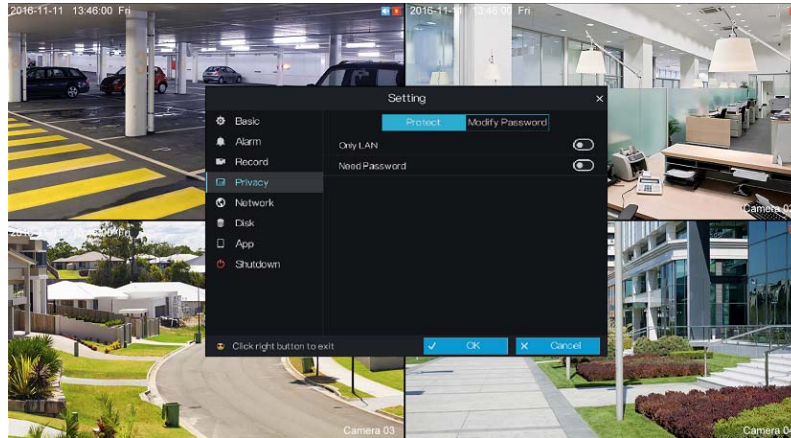
5.4 Privacy

5.4.1 Protect

Operation Steps

- Step 1 On the **Setting** screen, choose **Privacy** to access the privacy setting screen, as shown in Figure 5-6.

Figure 5-6 Privacy setting screen



- Step 2 Click **Protect**.

1. Click the button next to **Only LAN** to enable or disable the only LAN access function. The function is disabled by default.
2. Click the button next to **Need Password** to enable or disable the password function. The function is enabled by default.
3. After **Need Password** is set to On, you can set an email address for retrieving the password.

Enter an email address and click **Check**. A prompt, indicating that the verification code has been sent to your email address, is displayed. Check your email, find the verification code, enter the verification code on the privacy setting screen, and click **Submit**. The password is set successfully if a setting success prompt is displayed.

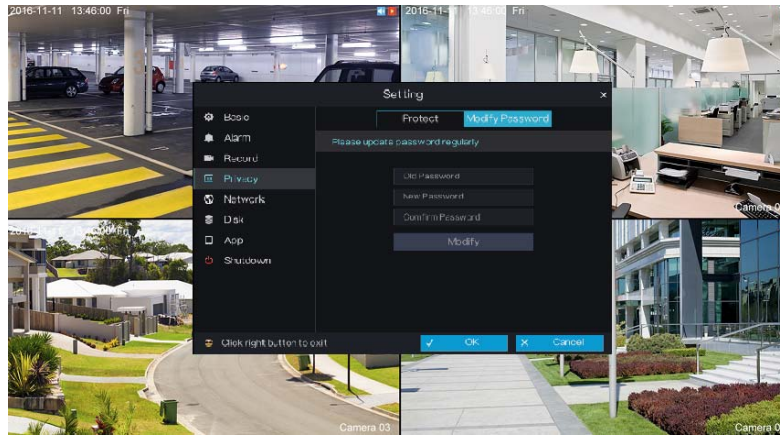
- Step 3 Click **OK** to save system protection settings or click **Cancel** to cancel settings.

5.4.2 Modify Password

Operation Steps

- Step 1 On the privacy setting screen, click **Modify Password** to access the password modification screen, as shown in Figure 5-7.

Figure 5-7 Password modification screen



- Step 2 Enter the correct old password, new password, and confirm password, and click **Modify**. The password is modified successfully.

----End

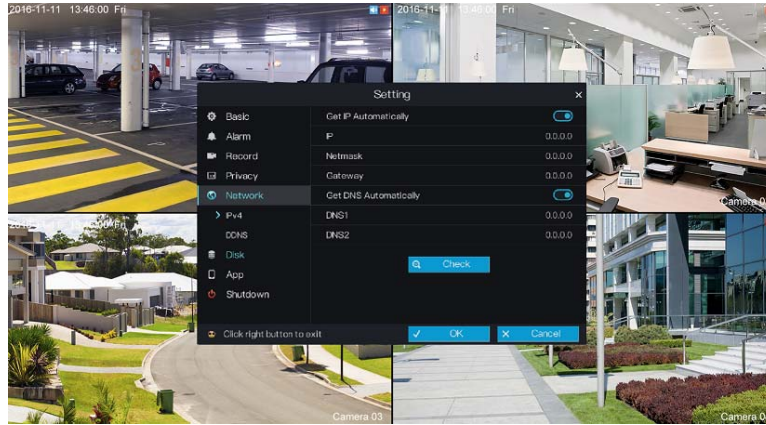
5.5 Network

5.5.1 IPv4

Operation Steps

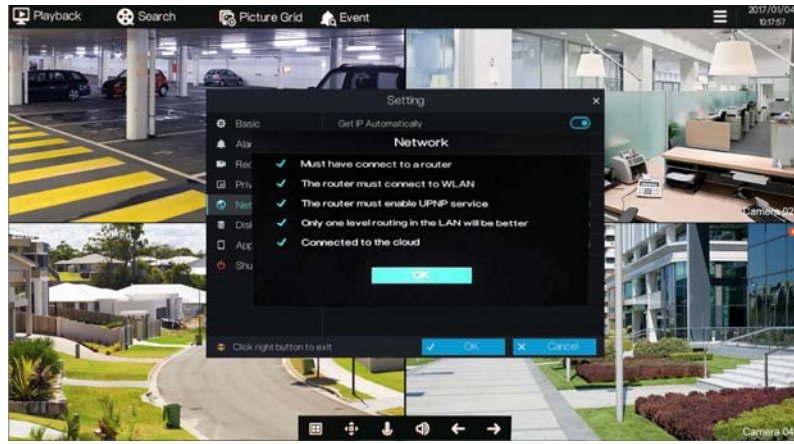
- Step 1 On the **Setting** screen, choose **Network** to access the IPv4 network setting screen, as shown in Figure 5-8.

Figure 5-8 IPv4 network setting screen



- Step 2 Click the button next to **Get IP Automatically** to enable or disable the function of automatically getting an IP address. The function is enabled by default.
If the function is disabled, click input boxes next to **IP**, **Netmask**, and **Gateway** to set the parameters as required.
- Step 3 Click the button next to **Get DNS Automatically** to enable or disable the function of automatically getting a DNS address. The function is enabled by default.
If the function is disabled, click input boxes next to **DNS1** and **DNS2**, delete original addresses, and enter new addresses.
- Step 4 Click **Check**. The system automatically checks network settings and the dialog box as shown in Figure 5-9 is displayed. Check and connect the network based on network check results.

Figure 5-9 Network check screen



Step 5 Click **OK** to save IPv4 network settings or click **Cancel** to cancel settings.

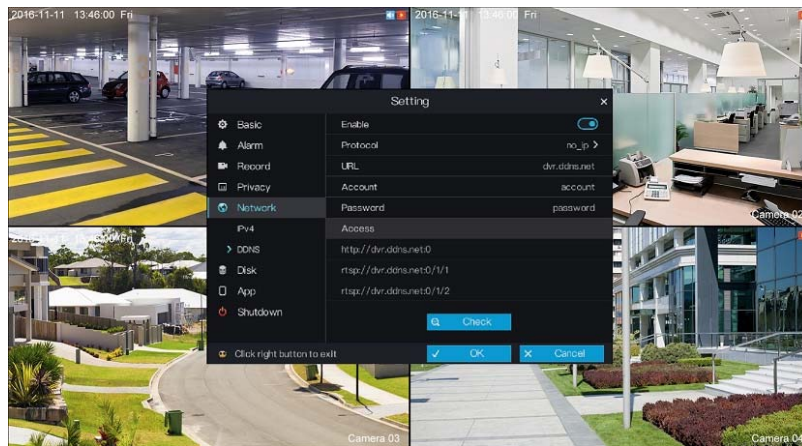
---End

5.5.2 DDNS

Operation Steps

Step 1 On the **Setting** screen, choose **Network** > **DDNS** to access the DDNS network setting screen, as shown in Figure 5-10.

Figure 5-10 DDNS setting screen



- Step 2 Click the button next to **Enable** to enable the DDNS function. It is disabled by default.
- Step 3 Select a required value from the **Protocol** drop-down list.
- Step 4 Set URL, Account, and Password.
- Step 5 Click **Check**. The system automatically checks network settings and the dialog box as shown in Figure 5-9 is displayed. Check and connect the network based on network check results.
- Step 6 Click **OK** to save DDNS network settings or click **Cancel** to cancel settings.

**NOTE**

An external network can access an address specified in the DDNS settings to access the HDVR.

----End

5.6 Disk

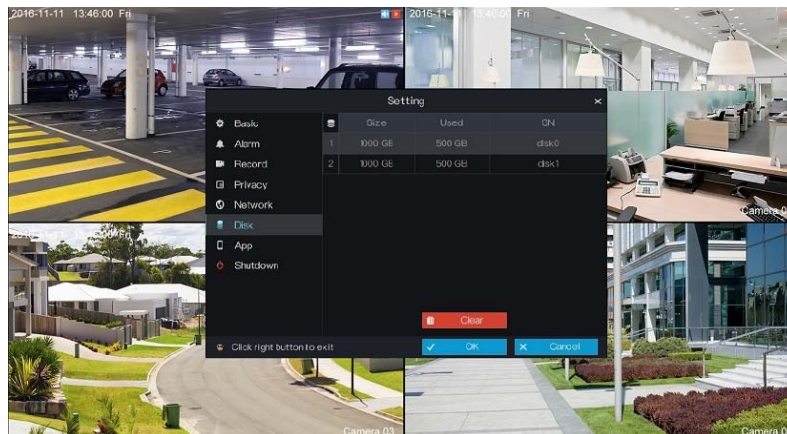
The system allows you to view the total capacity, used capacity, and SNs of disks, and clear all video data in a disk in disk management.

5.6.1 Viewing Disk Information

Operation Description

- Step 1 On the **Setting** screen, choose **Disk** to access the disk management screen, as shown in Figure 5-11.

Figure 5-11 Disk management screen



Step 2 You can view the total capacity, used capacity, and SN of a disk on the disk management screen.

----End

5.6.2 Clearing Disk Data

Click **Clear** in the lower part of the disk management screen. A message, indicating that all video data will be cleared and asking you whether to continue the operation, is displayed. Click **OK** to delete all video data on the disks.

5.7 App

You can use application software that supports QR code scanning to scan the QR code in **App** to download the application for mobile phones. Then, you can perform operations on the HDVR by using the App.

Operation Description

On the **Setting** screen, choose **App** to access the mobile phone App screen, as shown in Figure 5-12.

Figure 5-12 Mobile phone App screen



QR codes are described as follows:

iOS QR code: used by iOS-based devices to download the App client.

Android QR code: used by Android-based devices to download the App client.

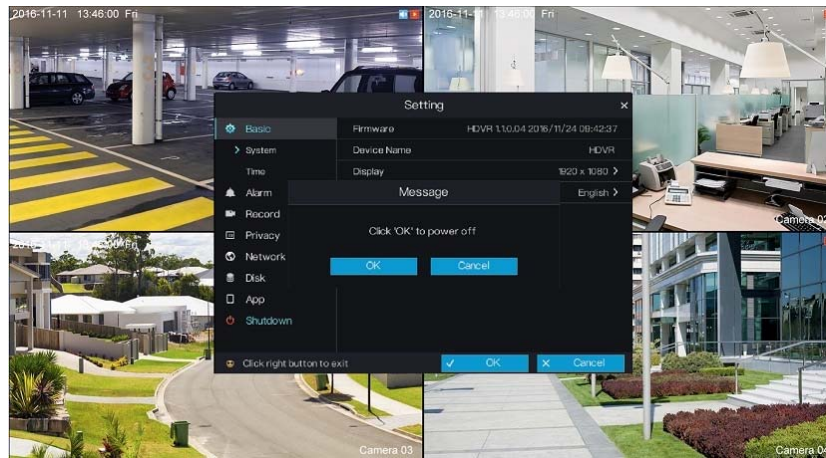
UUID QR code: After the mobile phone App is installed, you can scan the UUID QR code to add an HDVR.

5.8 Shutdown

Operation Description

On the **Setting** screen, choose **Shutdown**. The message "Click OK to power off" is displayed, as shown in Figure 5-13. Click **OK** to power off the HDVR.

Figure 5-13 Shutdown message box screen



---End

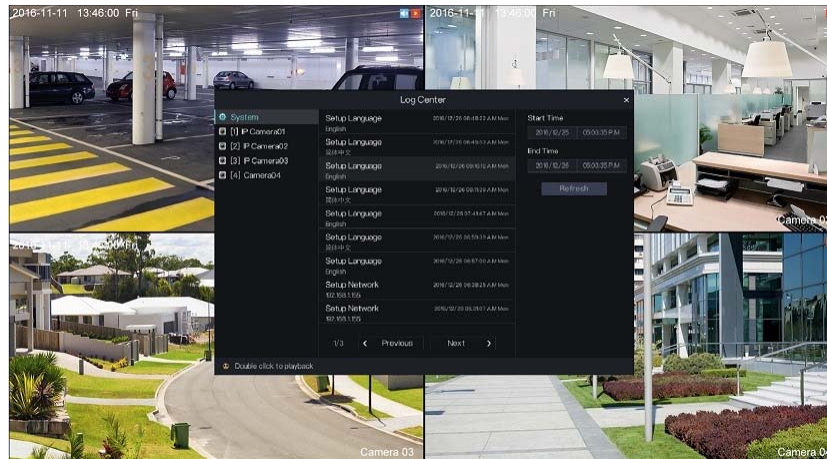
6 Log Center

The system allows you to set and view records of any operations performed on the HDVR in **Log Center**, including power-on, parameter settings, and camera management.

Operation Steps

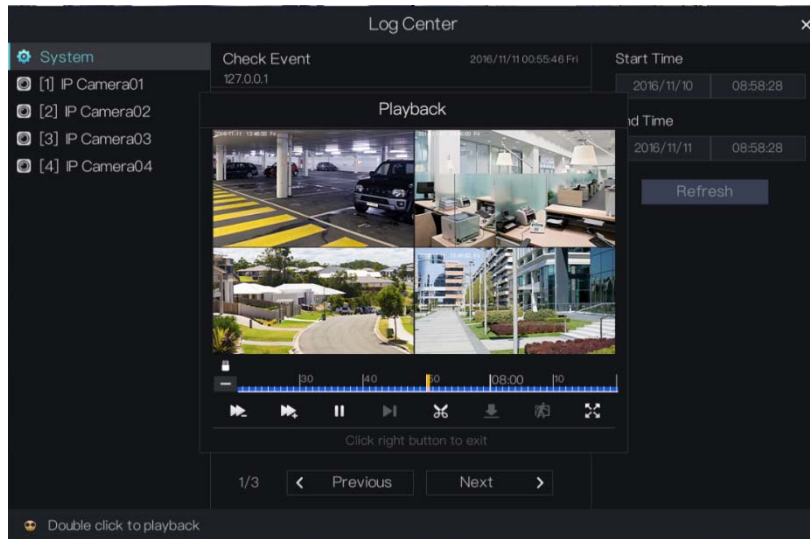
- Step 1 Click **Log Center** in the main menu to access the **Log Center** screen, as shown in Figure 6-1.

Figure 6-1 Log Center screen



- Step 2 Select an object whose logs need to be queried on the left side of the **Log Center** screen. The logs include system logs and logs of a camera in a channel.
- Step 3 Set the log start time and end time on the right side of the **Log Center** screen.
- Step 4 Click **Refresh** to query logs.
- Step 5 Double-click a log to play the video generated at the log time point, as shown in Figure 6-2.

Figure 6-2 Log play screen



----End

7 Alarm

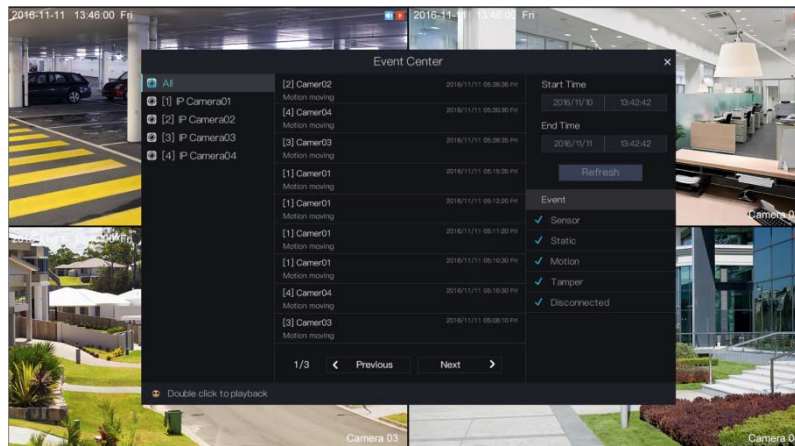
The system allows you to view alarm events, set the timeline, and clear alarms in **Alarm**.

7.1 Event

Operation Steps

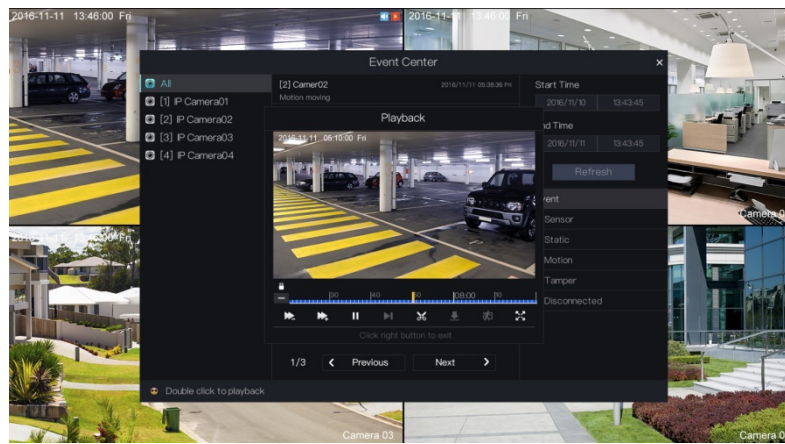
- Step 1 Click **Alarm** in the main menu to access the **Event Center** screen, as shown in Figure 7-1.

Figure 7-1 Event Center screen



- Step 2 Select an object whose alarms need to be queried on the left side of the **Event Center** screen. The object may be all cameras or a camera in a channel.
- Step 3 Select the event type below **Event** in the lower right part of the **Event Center** screen. All event types are selected by default. You can click one event type to deselect it.
- Step 4 Set the alarm start time and end time in the upper right part of the **Event Center** screen.
- Step 5 Click **Refresh** to query alarm events.
- Step 6 Double-click an alarm event to play the alarm video, as shown in Figure 7-2.

Figure 7-2 Alarm video play screen



----End

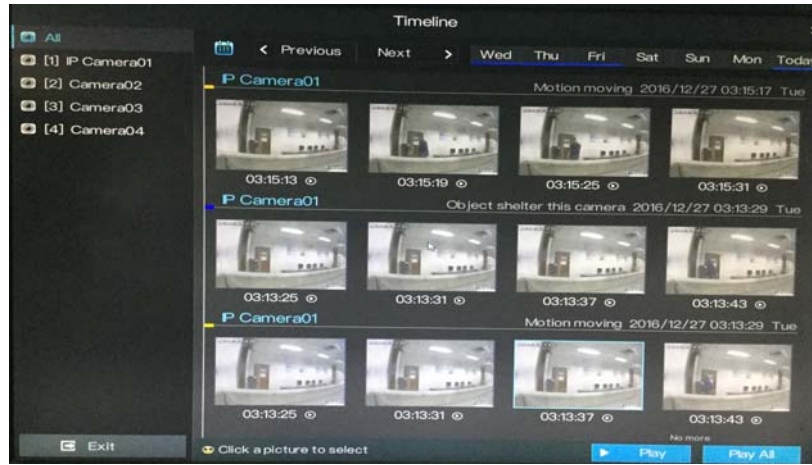
7.2 Timeline

The system allows you to set the timeline to play alarm videos presented by time on each day of a week.

Operation Steps

- Step 1 Choose **Alarm > Timeline** in the main menu to access the **Timeline** screen, as shown in Figure 7-3.

Figure 7-3 Timeline screen



Step 2 Select the alarm time to view the alarm records on that day.

Step 3 Double-click an alarm picture to play the alarm video.

----End

7.3 Clear alarm

Step 1 When the buzzer beeps, click **Clear alarm** in the main menu to stop the alarm.

----End