

# KanexPro®

## SDI-HDSDXPRO

### USER MANUAL

Version 1.1



## Index

Description .....	3
Features .....	3
Connection Diagram .....	4
Front Panel .....	5
Rear Panel .....	5
Dip Switch .....	6
EDID Learning .....	7
Specifications .....	8
Firmware Upload .....	9
Update List .....	11
Warranty.....	11

## Description

---

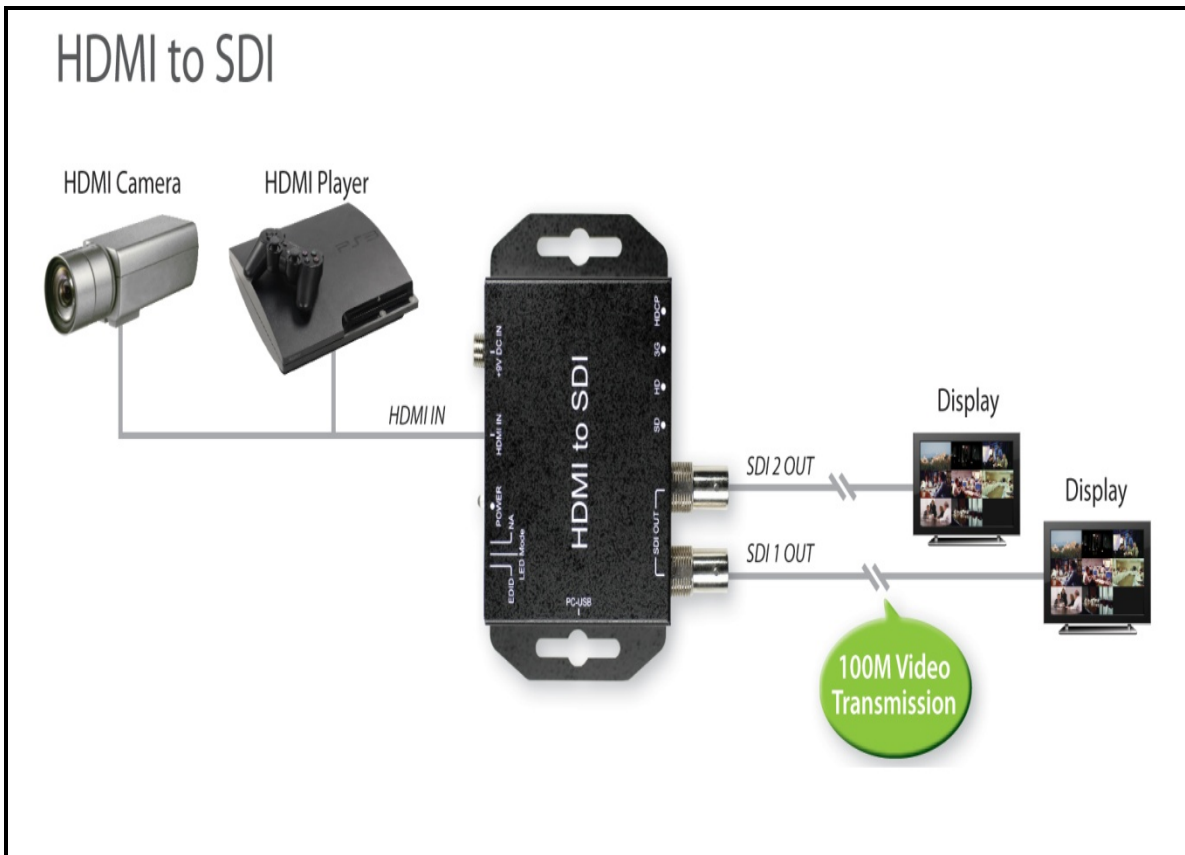
The KanexPro next generation of HDMI to SDI converters are designed for converting single –HDMI signal into two 3G-SDI, HD-SDI signals in professional applications involving broadcasting, post –production and filming. It auto detects input signals converting the output resolution to correct format.

## Features

---

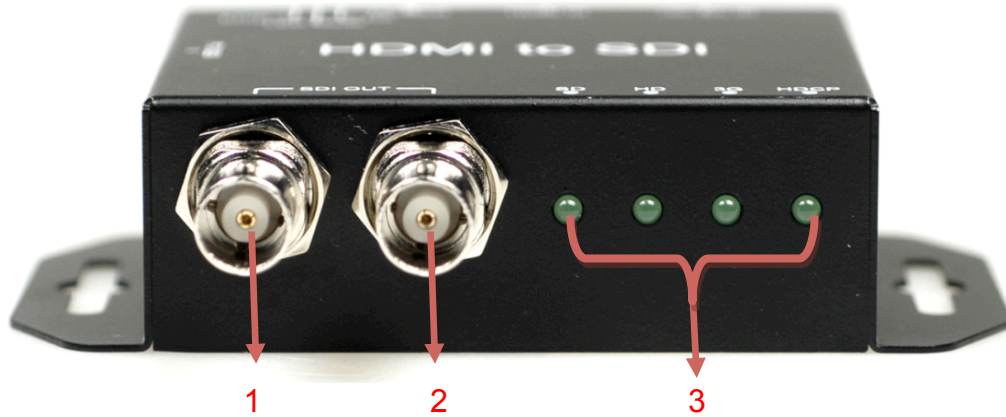
- Get the supreme quality HDMI conversion to HD-SDI
- SDI loop output for duplication or broadcasting
- Built-in re-clocking & equalization
- Integrated Audio de-embedder for 2-channel / 48KHz audio
- Supports multiple video resolutions:
- SDI 525i, 625i • HD: 720p 24, 25,30,50 & 60 Hz
- HD: 1080i 50 & 60 Hz.
- HD: 1080p 24, 25,30, 50 & 60 Hz
- 3G mode length up to 130m
- HD mode length up to: 170m
- SD mode length up to 300m
- Supports conversion to SMPTE 425M Level A 1080p 50/59.94/60 4:2:2 10-bit
- Supports cascading of multiple SDI's in application
- Automatically switches between SD, HD and 3G-SDI standards
- Compact & ruggedized size makes perfect mobile broadcasting hardware
- Micro-USB Port for firmware update

### Application Diagram



**Front Panel**

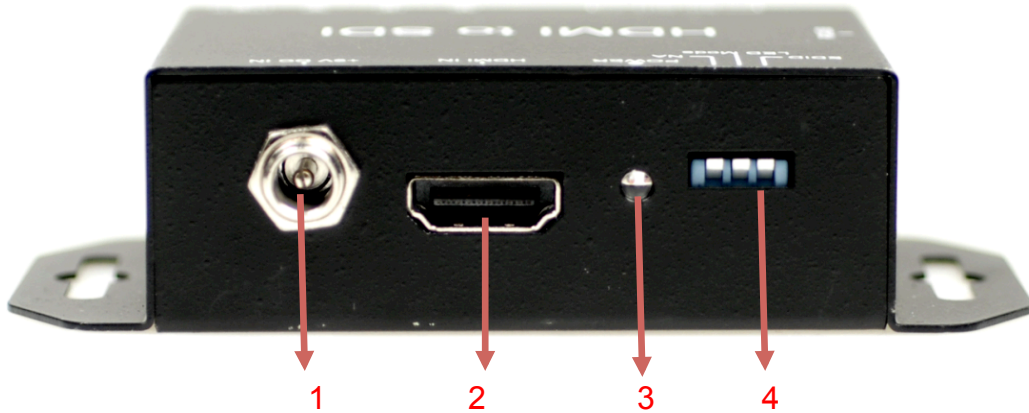
---



- 1. 3G/HD/SD-SDI Output 1
- 2. 3G/HD/SD-SDI Output 2
- 3. 3G/HD/SD/HDCP LED indicator

**Rear Panel**

---



- 1. Power (+6V ~ + 15V)
- 2. HDMI Input
- 3. Power LED indicator
- 4. Dip Switch:

Pin On (↑): Enable	Pin OFF (↓): Disable

- a. EDID
- b. LED Mode
- c. 3GB/3GA Switch

## Dip Switch

- EDID:  
In order to keep the compatibility of HDMI to most monitors, SDI-HDSDXPRO features EDID learning ability.  
Pin On (↑): Default EDID  
Pin OFF (↓): Learning EDID

- LED Mode:  
Pin OFF (↓):

Resolution	SD LED	HD LED	3G LED	HDCP LED
720 x 480i (NTSC)	○	○	○	●
720 x 576i (PAL)	○	○	●	○
1280 x 720 p50	○	○	●	●
1280 x 720 p60	○	●	○	○
1920 x 1080 i50	○	●	○	●
1920 x 1080 i60	○	●	●	○
1920 x 1080 p24	○	●	●	●
1920 x 1080 p25	●	○	○	○
1920 x 1080 p30	●	○	○	●
1920 x 1080 p50	●	○	●	○
1920 x 1080 p60	●	○	●	●
Un-Support	●	●	●	●

● : LED ON



○ : LED OFF

Pin On (↑)

Resolution	3G LED	HD LED	SD LED
NTSC / PAL	○	○	●
720p / 1080i / 1080 [24p, 30p]	○	●	○
1080 [50p,60p] / 2K	●	○	○

- : LED ON
- : LED OFF

- 3GA/3GB:  
Switcher 3GA and 3GB Format only supports 1920x1080 p60 ,  
1920x1080p59 and 1920x1080 p50

Dip Swticher	
3GA Format	
3GB Format	

### EDID Leaning

1. Turn off SDI-HSDXPRO Box and EDID pin is pull down.
2. Connect the TV monitor thru HDMI port to SDI-HSDXPRO box, and then turn on SDI-HSDXPRO box.
3. The LED of SDI-SDHDXPRO box will light, which indicates the EDID learning process is finished.

LED Sequence	SD LED	HD LED	3G LED	HDCP LED
Start	○	○	○	●
↓	○	○	●	●
↓	○	●	●	●
↓	●	●	●	●
Finish	○	○	○	○

- : LED ON
- : LED OFF

4. Connect SDI-HSDXPRO box to the HDMI source through a HDMI cable

## Specifications

DESCRIPTION	
Support Video Resolution	SD – 720 x 480i (NTSC) / 720 x 576 I (PAL) HD– 1280 x 720p 1920 x 1080 50i/60i 1920 x 1080 24p/25p/30p 3G– 1920 x 1080 50p/60p 2K– 2048 x 1080 24p/30p
SDI format	SD-SDI (SMPTE 259M) HD-SDI (SMPTE 292M) 3G-SDI (SMPTE 424M / SMPTE 425M)
Audio Support	2 Channel
Audio Sample	Auto Re-sample to 48Khz (For Stereo)
Coaxial Cable Type	RG6/RG59(75Ω)
Cable Equalization	3G: 100m of RG6/ 86m of RG59 HD: 170m of RG6/ 120m of RG59 SD: 400m of RG6/ 280m of RG59 *1 RG6: CANARE L-5CFB Cable / RG59: Belden 9275 Cable *2 Cable Length Performance: Depending on SDI Signal and Cable Quality
Input	1 x HDMI
Output	2 x BNC [SDI]
BNC Connector	3G 75 Ω inter-locked socket
HDMI Connector	TYPE A [19-pin female]
DIP Switch	3-pin [EDID / LED mode / NA]
Housing	SECC
Dimension	L:104mm x W:63.3mm xH:26mm
Power Source	Power Adapter: AC 100 ~ 240 V/DC (+6 ~ 15 V)
Operation Temperature	0~50°C [32~114°F]
Storage Temperature	-20~+60°C



## Firmware Upload

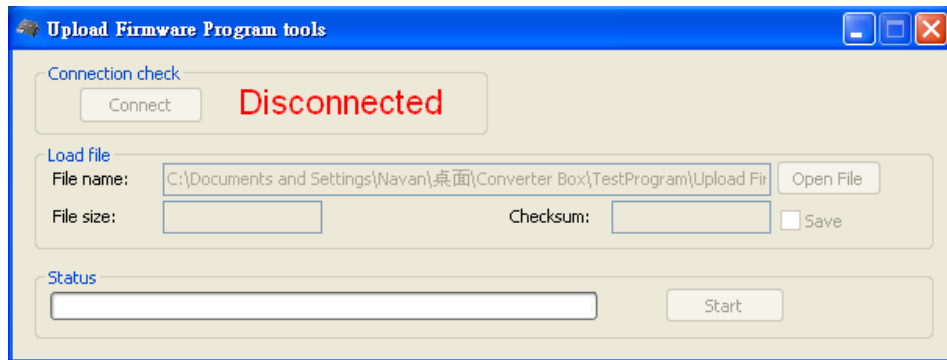
---

- Firmware is upgradable in the field using the integrated USB port

How to Firmware upgrade:

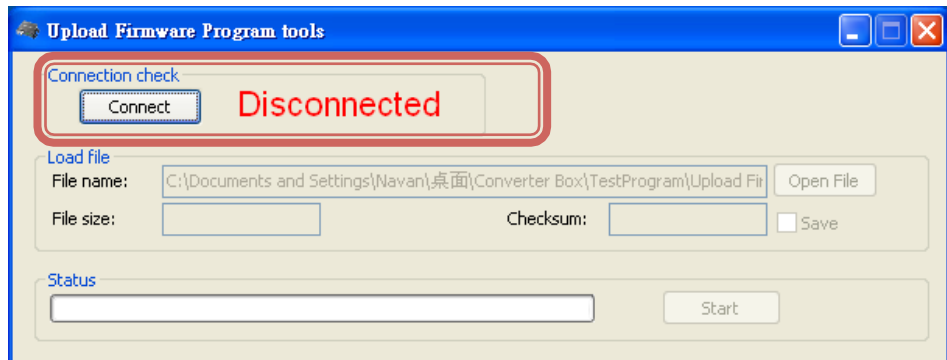
Step 1.

Open Upload Firmware Program tools.exe and connect box to PC by USB Cable.



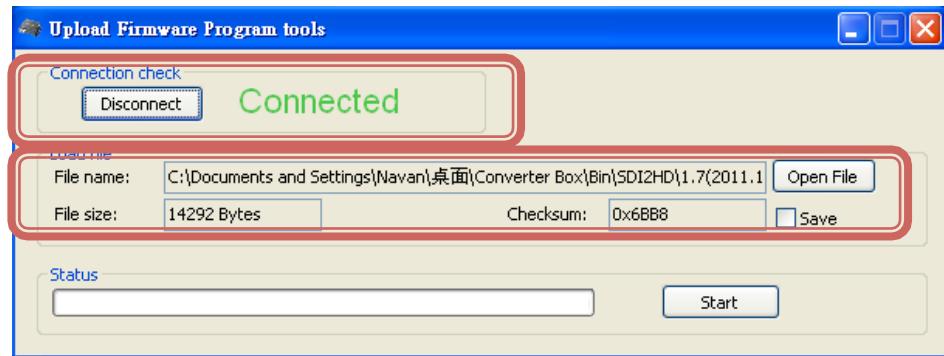
Step 2.

Plug and un-plug “DC adapter” to power on/off the converter box (the connection check status will be changed to “Connect”)

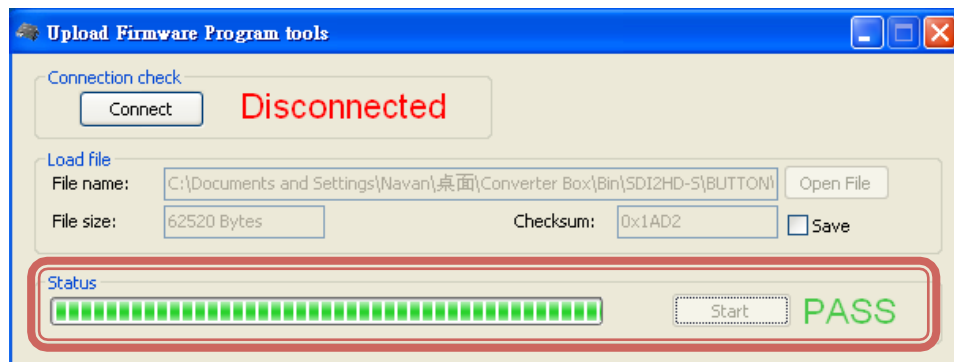


**Step 3.**

Plug and un-plug “DC adapter” again (the connection check status will be changed to “Connected”) and Please click the Open File button to select the firmware bin file.

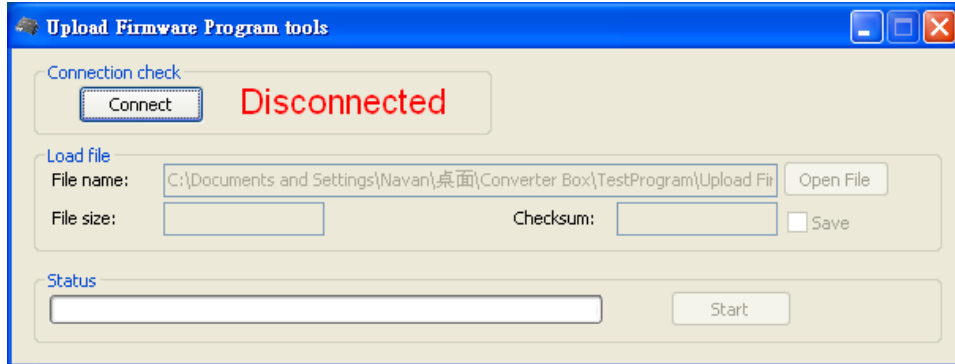
**Step 4.**

Please click “Start’ Button to proceed with new firmware programming.  
The PASS message will appear when the procedures finished.



Step 5.

Close Upload Firmware Program tools



**Update List**

Data	Version	Command
2013.02.25	V1.0	Modify Spec for audio support.
2016.02.23	V1.1	Add 3GB format (FW-0205)

**Warranty**

**A. LIMITED WARRANTY**

KanexPro™ warrants that (a) its products (the “Product”) will perform greatly in agreement with the accompanying written materials for a period of 36 months (3 full years) from the date of receipt and (b) that the product will be free from defects in materials and workmanship under normal use and service for a period of 3 years.

**B. CUSTOMER REMEDIES**

KanexPro’s entire liability and Customer’s exclusive remedy shall be, at KanexPro option, either return of the price paid for the product, or repair or replacement of the Product that does not meet this Limited Warranty and which is returned to KanexPro with a copy of customers’ receipt. This Limited Warranty is

void if failure of the Product has resulted from accident, abuse, or misapplication. Any replacement Product will be warranted for the remainder of the original warranty period of 3 years, whichever is longer.

#### **C. NO OTHER WARRANTIES**

To the maximum extent permitted by applicable law, KanexPro disclaims all other warranties, either express or implied, including, but not limited to implied warranties of merchantability and fitness for a particular purpose, with regard to the product and any related written materials. This limited warranty gives customers specific legal rights. Customers may have other rights depending on the jurisdiction.

#### **D. NO LIABILITY FOR DAMAGES**

To the maximum extent permitted by applicable law, in no event shall KanexPro be liable for any damages whatsoever (including without limitation, special, incidental, consequential, or indirect damages for personal injury, loss of business profits, business interruption, loss of business information, or any other pecuniary loss) arising out of the use of or inability to use this product, even if KanexPro has been advised of the possibility of such damages.

**KanexPro**<sup>®</sup>

1405 pioneer street  
Brea, CA 92821