

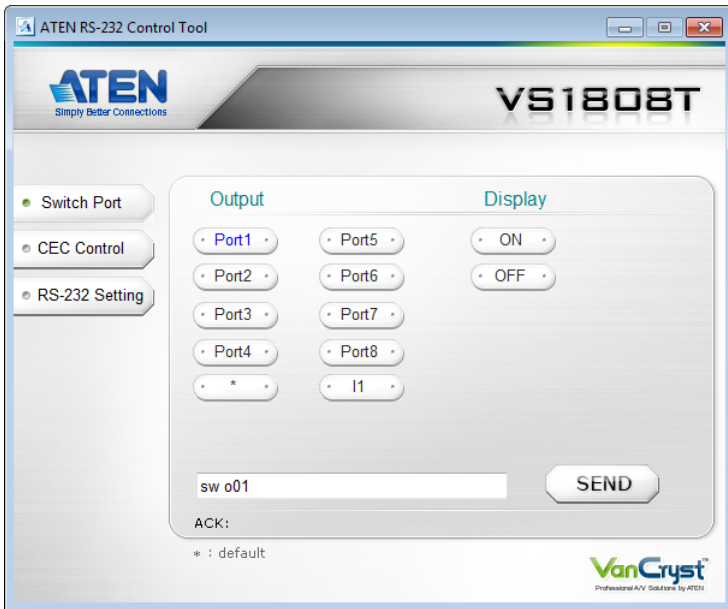
VS1804T / VS1808T

4/8-Port HDMI Over Cat 5 Splitter

RS-232 Control Tool

V1.0.062

User Manual



EMC Information

FEDERAL COMMUNICATIONS COMMISSION INTERFERENCE STATEMENT

This equipment has been tested and found to comply with the limits for a Class A digital device, pursuant to Part 15 of the FCC Rules. These limits are designed to provide reasonable protection against harmful interference when the equipment is operated in a commercial environment. This equipment generates, uses, and can radiate radio frequency energy and, if not installed and used in accordance with the instruction manual, may cause harmful interference to radio communications. Operation of this equipment in a residential area is likely to cause harmful interference in which case the user will be required to correct the interference at his own expense.

FCC Caution: Any changes or modifications not expressly approved by the party responsible for compliance could void the user's authority to operate this equipment.

CE Warning:

This is a class A product. In a domestic environment this product may cause radio interference in which case the user may be required to take adequate measures.

RoHS

This product is RoHS compliant.

SJ/T 11364-2006

The following contains information that relates to China.

部件名称	有毒有害物质或元素					
	铅	汞	镉	六价铬	多溴联苯	多溴二苯醚
电器部件	●	○	○	○	○	○
机构部件	○	○	○	○	○	○

- : 表示该有毒有害物质在该部件所有均质材料中的含量均在SJ/T 11363-2006规定的限量要求之下。
- : 表示符合欧盟的豁免条款, 但该有毒有害物质至少在该部件的某一均质材料中的含量超出SJ/T 11363-2006的限量要求。
- ×: 表示该有毒有害物质至少在该部件的某一均质材料中的含量超出SJ/T 11363-2006的限量要求。



RS-232 Control Tool Operation

Overview

The VS1804T / VS1808T's built-in bi-directional RS-232 serial interface allows system control through a high-end controller, PC, and/or home automation / home theater software package. The RS-232 Control Tool is an application used to send operational commands from your PC – to the VS1804T / VS1808T through a serial (RS-232) interface connection. RS-232 serial operations to and from the VS1804T / VS1808T can be managed using ATEN's Graphical User Interface (GUI) on computers that are running the Microsoft Windows operating system. In order to use the RS-232 Control Tool, two separate programs must be installed on the PC – .NET Framework 2.0 and the RS-232 Control Tool. The procedure for installing and operating the RS-232 Control Tool is detailed in the following section.

Before You Begin

Installing .NET Framework 2.0

To install .NET Framework on your PC, do the following:

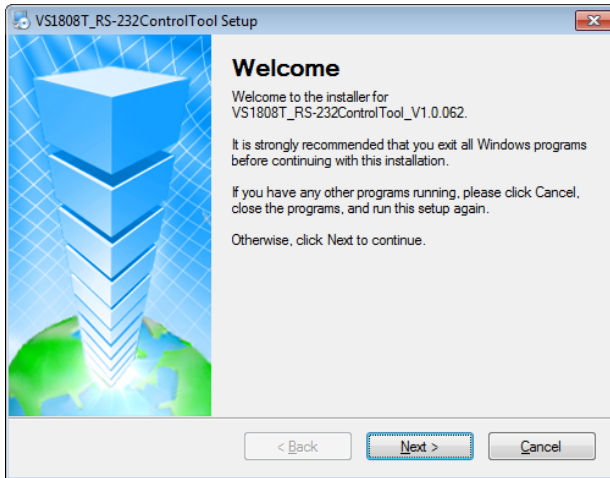
1. Download the executable file from the ATEN website or the Microsoft Download Center online, and run it.
2. Follow the instructions on the screen. The installation applet will automatically detect the operating system and install the correct drivers.

Installing the RS-232 Control Tool

To install the RS-232 Control Tool, do the following:

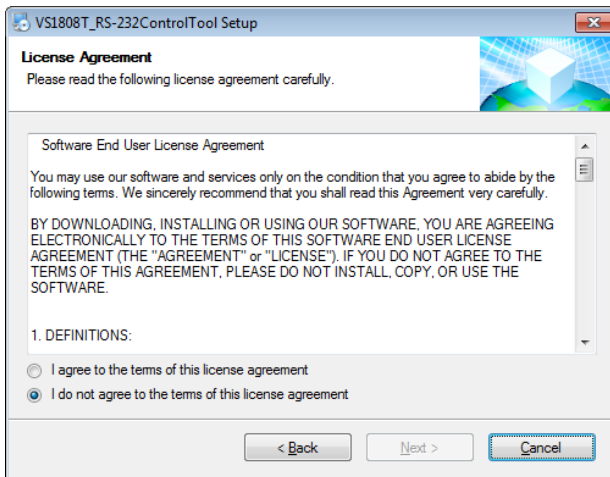
1. Download the RS-232 Control Tool from the Download or VS1804T / VS1808T's *Resource* page on our website:
www.aten.com
2. Save the file to a convenient location.

3. Double click to run the setup file. The Welcome screen displays:



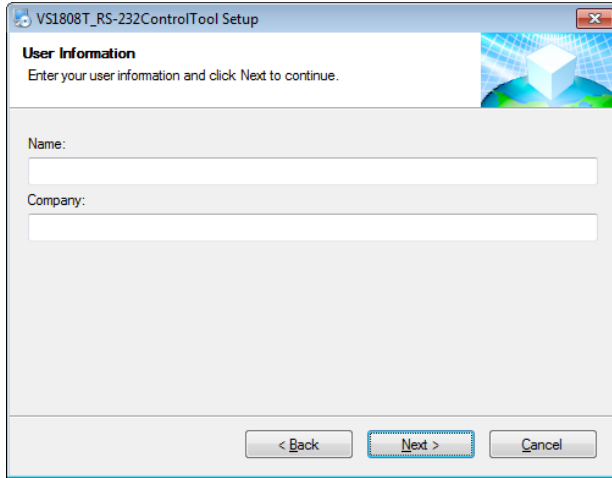
Click **Next**.

4. The License Agreement appears:



If you agree with the License Agreement, select *I agree with the terms of this license agreement*, and click **Next**.

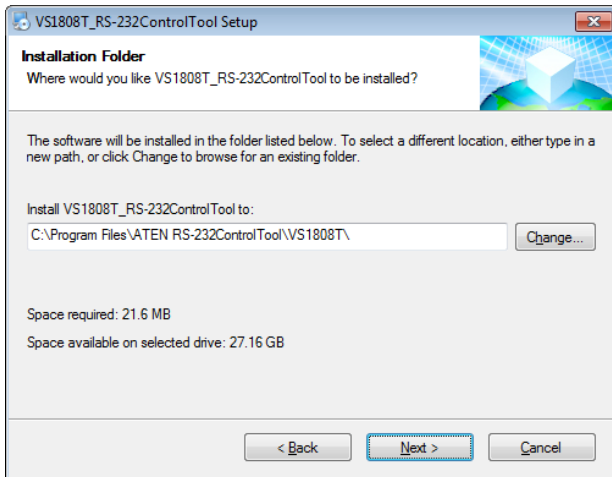
5. The User Information screen is displayed as follows:



The screenshot shows a Windows-style dialog box titled "VS1808T_RS-232ControlTool Setup". The main heading is "User Information" with a sub-instruction: "Enter your user information and click Next to continue." Below this are two text input fields labeled "Name:" and "Company:". At the bottom of the dialog are three buttons: "< Back", "Next >" (which is highlighted with a blue border), and "Cancel".

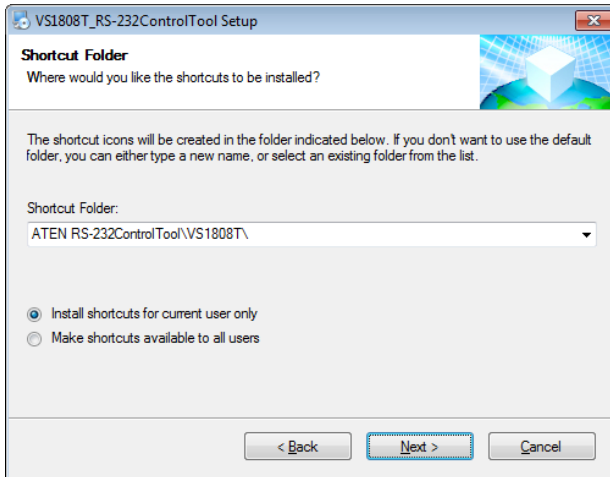
Fill in your *Name* and *Company*, then click **Next**.

6. When the Installation Folder screen appears, you can select where you want to install the program by clicking **Change**, or use the default installation location provided, then click **Next**.



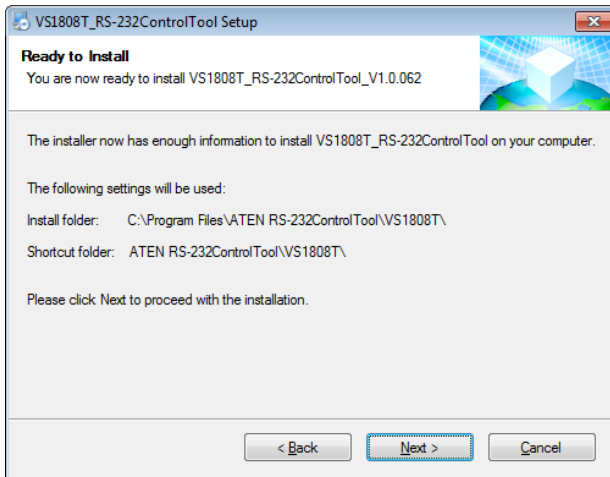
The screenshot shows a Windows-style dialog box titled "VS1808T_RS-232ControlTool Setup". The main heading is "Installation Folder" with a sub-instruction: "Where would you like VS1808T_RS-232ControlTool to be installed?". Below this is a paragraph of text: "The software will be installed in the folder listed below. To select a different location, either type in a new path, or click Change to browse for an existing folder." There is a text input field containing the path "C:\Program Files\ATEN RS-232ControlTool\VS1808T\" and a "Change..." button to its right. Below the path field, it says "Space required: 21.6 MB" and "Space available on selected drive: 27.16 GB". At the bottom of the dialog are three buttons: "< Back", "Next >" (highlighted with a blue border), and "Cancel".

- From the Shortcut Folder screen, type in or use the drop-down menu to enter the folder where you want to install the shortcuts:

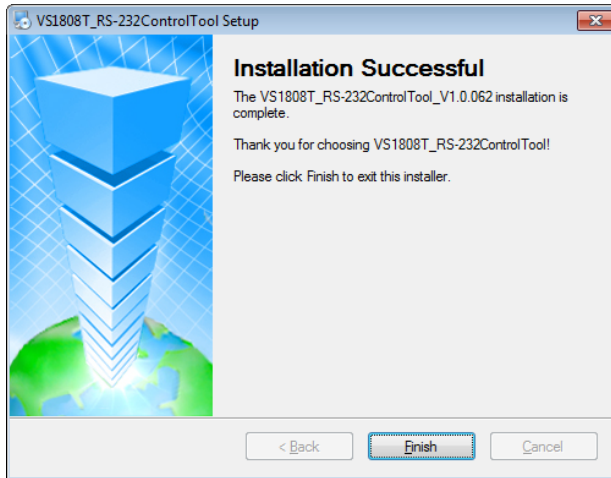


Select *Install shortcuts for current user only*, or *Make shortcuts available to all users*, and click **Next**.

- At the Ready to Install screen, confirm your settings – click **Back** if you need to make changes, or click **Next** to begin the installation:



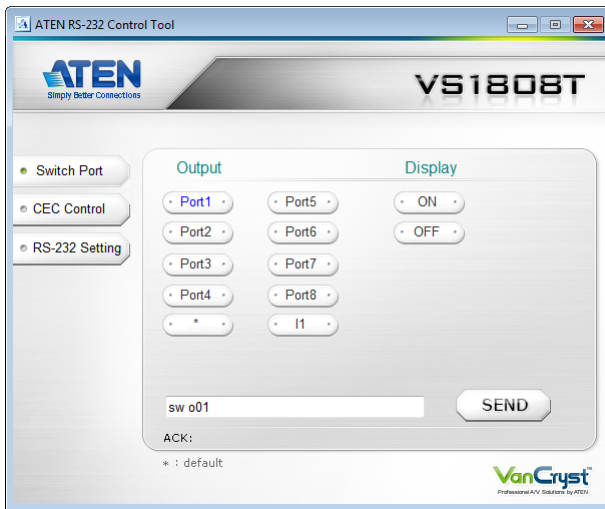
9. When the installation has completed successfully, the following screen is displayed:



Click **Finish**. You are now ready to use the RS-232 Control Tool.

GUI Main Page

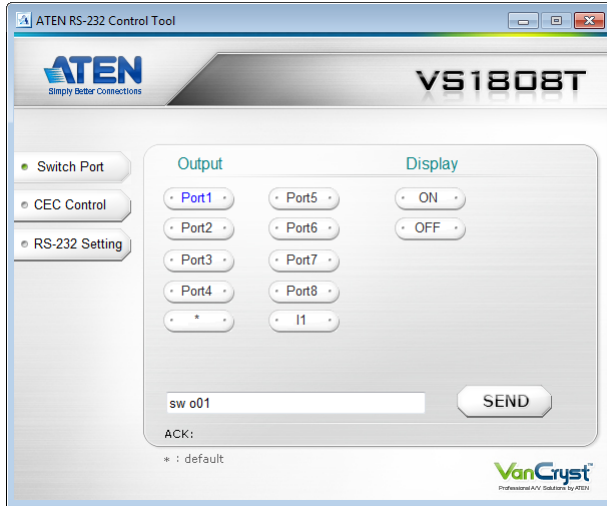
The RS-232 Control Tool is a convenient and intuitive application to send RS-232 commands to your VS1804T / VS1808T. For detailed information about the function of each RS-232 command, see the VS1804T / VS1808T user manual. To invoke the GUI, simply click the RS-232 Control Tool shortcut. The interface opens the *Switch Port* page by default, as shown below:



The various elements of the GUI are described in the following sections.

Note: The GUI for the VS1808T and VS1804T are the same, with the only difference being that the VS1808T has four additional ports to manage.

Switch Port



The Switch Port page is used to power on or power off the display connected to a port.

On the Switch Port page, the following actions are possible:

- ◆ Click an **Output** port to select it (options are Ports 1~8, * , 11)
* = all output ports / I1 = local output port
- ◆ Select whether to turn the **Display** On or Off
- ◆ Use the text box to manually enter the command
- ◆ Click **Send** to execute the command

Switch Port Commands

These actions can also be performed by keying the command into the text box, and clicking **Send**.

The formula for the Switch Port command is as follows:

Switch Command + Output Command + Port Number + Control [Enter]

1. For example, to switch Output port 02 on, type the following:
sw o02 on [Enter]
2. To switch all Output ports off, type the following:
sw o* off [Enter]
3. To turn the local Output port on, type the following:
sw o11 on [Enter]

Possible Values

The following table shows the possible values for switch commands:

Command	Description
sw	Switch command

Output Command	Description
o	Output command

Output Port Number	Description
yy	01-08 port (default is 01)
*	All output ports
l1	Local output port

Control	Description
on	Turn on
off	Turn off

Enter	Description
[Enter]	Enter and send out the command

Switch Port Command Table

Cmd	Out	N1	Control	Enter	Description
sw	o	yy * l1	on	[Enter]	Turn on output port yy (yy: 01-08, *, l1) * = All output ports, l1 = Local output port
sw	o	yy * l1	off	[Enter]	Turn off output port yy (yy: 01-08, *, l1) * = All output ports, l1 = Local output port

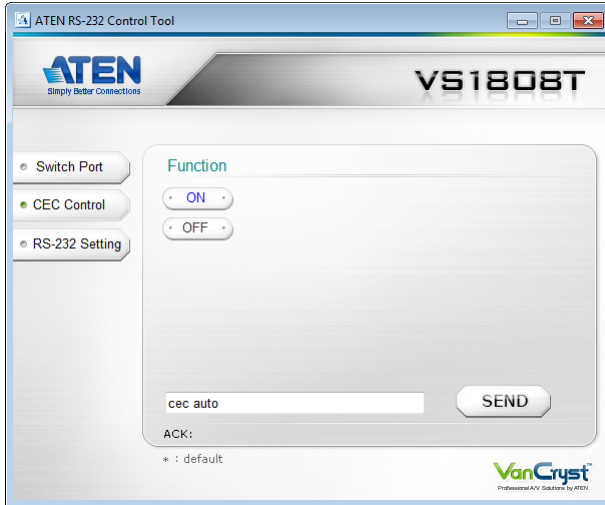
Acknowledge

After commands are sent, acknowledge messages are returned.

Ack	Description
Command OK	Command is correct and function executed
Command Incorrect	Unavailable command or parameters

- Note:**
1. Each command string can be separated with a space.
 2. The **Port Number** command string can be skipped, and the default value will be used.

CEC Control



The CEC Control page is used to enable or disable the CEC Control feature. The default setting for the CEC Control is off.

From the CEC Control page, the following actions are possible:

- ◆ Select **On** to enable CEC Control
- ◆ Select **Off** to disable CEC Control (default)
- ◆ Use the text box to manually enter the command
- ◆ Click **Send** to execute the command

CEC Control Commands

These actions can also be performed by keying the command into the text box, and clicking **Send**.

The formula for the CEC Control command is as follows:

Command + Control + [Enter]

1. For example, to disable CEC control, type the following:

cec off [Enter]

2. To enable CEC control, type the following:

cec auto [Enter]

Possible Values

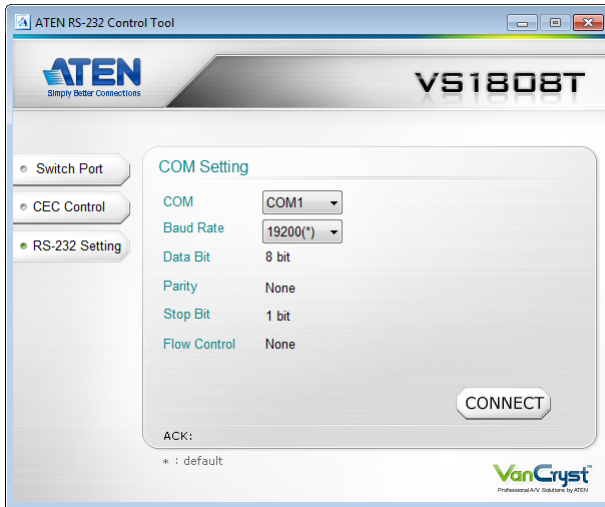
The following table shows the possible values for CEC Control commands:

Command	Description
cec	CEC Control command
Control	Description
auto	Enable CEC Control
off	Disable CEC Control (default)
Enter	Description
[Enter]	Enter and send out the command

CEC Control Table

Cmd	Control	Enter	Description
cec	auto	[Enter]	Enable CEC Control
cec	off	[Enter]	Disable CEC Control

RS-232 Setting



On the RS-232 Settings page, the serial port should be configured as follows:

Baud Rate	19200
Data Bits	8
Parity	None
Stop Bits	1
Flow Control	None

From the RS-232 Settings page, you can set the **COM** serial port and **Baud Rate**.

To set the COM port or Baud Rate, do the following:

- ◆ Select a **COM** port from the drop-down menu
- ◆ Select a **Baud Rate** from the drop-down menu
- ◆ Click **CONNECT**

If the port connection exists, the *Acknowledgment* message displays as follows:

Open port 'COM1' successfully