

# ANI-PIp-LITE

HDMI 2x1 Multi-Viewer with PIP





## SAFETY INFORMATION



1. To ensure the best results from this product, please read this manual and all other documentation before operating your equipment. Retain all documentation for future reference.
2. Follow all instructions printed on unit chassis for proper operation.
3. To reduce the risk of fire, do not spill water or other liquids into or on the unit, or operate the unit while standing in liquid.
4. Make sure power outlets conform to the power requirements listed on the back of the unit. Keep unit protected from rain, water and excessive moisture.
5. Do not attempt to clean the unit with chemical solvents or aerosol cleaners, as this may damage the unit. Dust with a clean dry cloth.
6. Do not use the unit if the electrical power cord is frayed or broken. The power supply cords should be routed so that they are not likely to be walked on or pinched by items placed upon or against them, paying particular attention to cords and plugs, convenience receptacles, and the point where they exit from the appliance.
7. Do not force switched or external connections in any way. They should all connect easily, without needing to be forced.
8. Always operate the unit with the AC ground wire connected to the electrical system ground. Precautions should be taken so that the means of grounding of a piece of equipment is not defeated.
9. AC voltage must be correct and the same as that printed on the rear of the unit. Damage caused by connection to improper AC voltage is not covered by any warranty.
10. Turn power off and disconnect unit from AC current before making connections.
11. Never hold a power switch in the "ON" position.
12. This unit should be installed in a cool dry place, away from sources of excessive heat, vibration, dust, moisture and cold. Do not use the unit near stoves, heat registers, radiators, or other heat producing devices.
13. Do not block fan intake or exhaust ports. Do not operate equipment on a surface or in an environment which may impede the normal flow of air around the unit, such as a bed, rug, carpet, or completely enclosed rack. If the unit is used in an extremely dusty or smoky environment, the unit should be periodically "blown free" of foreign dust and matter.
14. To reduce the risk of electric shock, do not remove the cover. There are no user serviceable parts inside. Refer all servicing to qualified service personnel. There are no user serviceable parts inside.
15. When moving the unit, disconnect input ports first, then remove the power cable; finally, disconnect the interconnecting cables to other devices.
16. Do not drive the inputs with a signal level greater than that required to drive equipment to full output.
17. The equipment power cord should be unplugged from the outlet when left unused for a long period of time.
18. Save the carton and packing material even if the equipment has arrived in good condition. Should you ever need to ship the unit, use only the original factory packing.
19. Service Information Equipment should be serviced by qualified service personnel when:
  - A. The power supply cord or the plug has been damaged.
  - B. Objects have fallen, or liquid has been spilled into the equipment.
  - C. The equipment has been exposed to rain.
  - D. The equipment does not appear to operate normally, or exhibits a marked change in performance.
  - E. The equipment has been dropped, or the enclosure damaged.

**▶ CONTENTS**

INTRODUCTION & CONTENTS ..... 1  
 FEATURES & SPECIFICATIONS ..... 2  
 OPERATION CONTROLS & FUNCTIONS ..... 3  
 REMOTE CONTROL ..... 4  
 APPLICATION EXAMPLE ..... 4  
 MODE INTRODUCTION ..... 5  
 RS-232 PROTOCOL ..... 9

**DEAR CUSTOMER**

Thank you for purchasing this product. For optimum performance and safety, please read these instructions carefully before connecting, operating or adjusting this product. Please keep this manual for future reference.

**INTRODUCTION**

The ANI-PiP-LITE is a high performance (2) by (1) Multi-Viewer. It supports (2) High definition input source displays on (1) screen. As a Multi-Viewer, it can display on one screen in (4) different modes. This product has a 3 year warranty.

**PACKAGE CONTENTS**

Before attempting to use this unit, please check the packaging and make sure the following items are contained in the shipping carton:

- ANI-PiP-LITE HDMI 2x1 Multi-Viewer
- Remote Control
- RS-232 Serial Cable
- (2) Mounting Ears
- 5V 1A DC Power Adapter
- Users Guide

**SAFETY PRECAUTIONS**

Please read all instructions before attempting to unpack, install or operate this equipment and before connecting the power supply. Please keep the following in mind as you unpack and install this equipment:

- Always follow basic safety precautions to reduce the risk of fire, electrical shock and injury to persons.
- To prevent fire or shock hazard, do not expose the unit to rain, moisture or install this product near water.
- Never spill liquid of any kind on or into this product.
- Never push an object of any kind into this product through any openings or empty slots in the unit, as you may damage parts inside the unit.
- Do not attach the power supply cabling to building surfaces.
- Use only the supplied power supply unit (PSU). Do not use the PSU if it is damaged.
- Do not allow anything to rest on the power cabling or allow any weight to be placed upon it or any person walk on it.
- To protect the unit from overheating, do not block any vents or openings in the unit housing that provide ventilation and allow for sufficient space for air to circulate around the unit.

**DISCLAIMERS**

The information in this manual has been carefully checked and is believed to be accurate. We assume no responsibility for any infringements of patents or other rights of third parties which may result from its use.

We assume no responsibility for any inaccuracies that may be contained in this document. We make no commitment to update or to keep current the information contained in this document.

We reserve the right to make improvements to this document and/or product at any time and without notice.

**COPYRIGHT NOTICE**

No part of this document may be reproduced, transmitted, transcribed, stored in a retrieval system, or any of its part translated into any language or computer file, in any form or by any means — electronic, mechanical, magnetic, optical, chemical, manual, or otherwise — without the express written permission and consent.

© Copyright 2019. All Rights Reserved.  
 Version 1.7 FEB 2019

**TRADEMARK ACKNOWLEDGMENTS**

All products or service names mentioned in this document may be trademarks of the companies with which they are associated.

## FEATURES

---

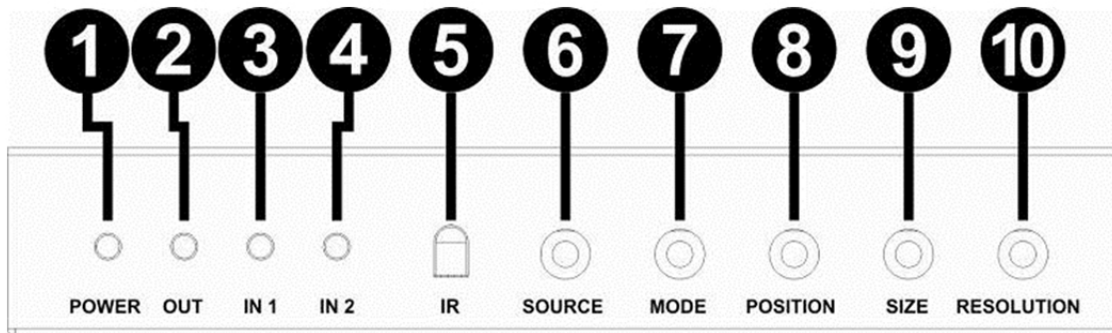
- HDMI 1.3a and HDCP 1.2 Compliant
- Supports multiplexed HDMI (2) Inputs and (1) Output with (4) display modes
- Supports up to 1080p High Definition resolution
- Supports scaler up and down functions
- Supports multi output resolutions
- Supports digital audio formats LPCM/AC3/DTS

## SPECIFICATIONS

---

- **Video Bandwidth:** 225MHz/6.75Gbps
- **Input Ports:** (2) HDMI (Female type)
- **Output Ports:** (1) HDMI (Female type)
- **Audio Output:** PCM2, 5.1, 7.1CH, Dolby 5.1, DTS5.1
- **Input Resolutions:** 480i60Hz, 480p60Hz, 576i50Hz, 576p50Hz, 720p50/60Hz, 1080i50/60Hz, 1080p24/30/50/60Hz, 800x600@60Hz, 1024x768@60Hz, 1280x720@60Hz, 1920x1080@60Hz
- **Output Resolutions:** 1080p, 720p, 1080i, 1024x768, 1360x768
- **ESD Protection:** Human Body Model: ±8kV (air-gap discharge) / ±4kV (contact discharge)
- **Dimensions (WxDxH):** 2.6 x 5.5 x 1 in (70x140x25mm)
- **Weight:** .7 lb (300g)
- **Chassis Material:** Metal
- **Operating Temperature:** 0°C~40°C/ 32°F~104°F
- **Storage Temperature:** -20°C ~ 60°C/-4°F ~140°F
- **Relative Humidity:** 20~90% RH (non-condensing)
- **Power Consumption (Max):** 10W
- **Power Supply:** 5V/1A DC (US/EU standards, CE/FCC/UL certified)

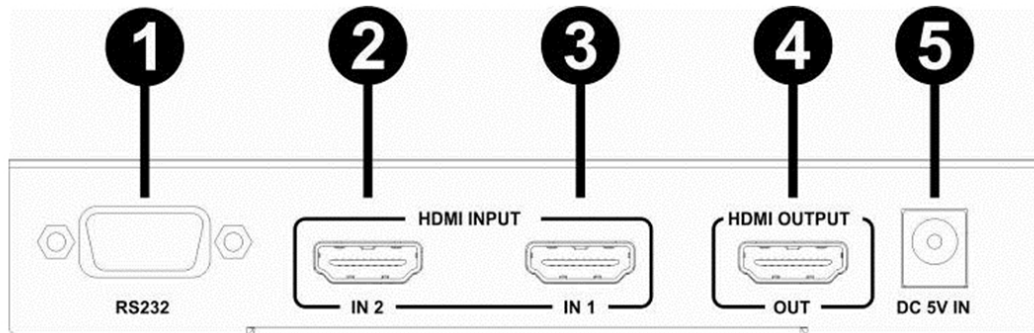
FRONT PANEL



- ① **POWER LED:** This red LED illuminates when the device is connected with the power supply.
- ② **OUTPUT LED:** This red LED illuminates when the TV plug is in the corresponding HDMI output port.
- ③ **IN1 LED:** This red LED illuminates when the HDMI IN1 is selected as the main image.
- ④ **IN2 LED:** This red LED illuminates when the HDMI IN2 is selected as the main image.
- ⑤ **IR:** Receives the remote control signal.
- ⑥ **SOURCE:** Press the button to select the input source as the main image and the LED will indicate the corresponding input source.
- ⑦ **MODE:** Press the button to select the display mode.
- ⑧ **POSITION:** The position function is not available via the front panel. To adjust the PiP position, use the GUI Software application. See page 8 of this users manual for more information.
- ⑨ **SIZE:** The size function is not available via the front panel. To adjust the PiP size, use the GUI Software application. See page 8 of this users manual for more information.
- ⑩ **RESOLUTION:** Press the button to select the output resolution.

NO.	RESOLUTION
1	1080p, Main image audio
2	720p, Main image audio
3	1080i, Main image audio
4	1024x768, Main image audio
5	1360x768, Main image audio

## BACK PANEL



- ❶ **RS-232:** Connected to computer via RS-232 tool and controlled via host-computer software.
- ❷ **HDMI IN2:** This slot is where you connect the HDMI source output from DVD, PS3, etc.
- ❸ **HDMI IN1:** This slot is where you connect the HDMI source output from DVD, PS3, etc.
- ❹ **HDMI OUTPUT:** This slots is where you connect the HDTV or monitor with a HDMI cable.
- ❺ **DC 5V IN:** Plug the 5V DC power supply into the unit.

**OUTPUT RESOLUTIONS**

- 1 **POWER:** Press this button to power on the matrix or set it to standby mode.
- 2 **IN1:** Press this button to select Input 1 as the main image.
- 3 **IN2:** Press this button to select Input 2 as the main image.
- 4 **SIZE:** Press the button to select the size of the sub image when in PiP mode. *(Currently Not Supported.)*
- 5 **POSITION:** Press these buttons to select the position of the sub image when in PiP mode. *(Currently Not Supported.)*
- 6 **MODE:** Press the button to select the display mode.
- 7 **RESO:** Press the button to select the output resolution.

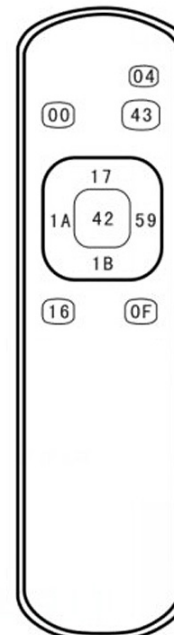


**IR REMOTE CUSTOM AND DATA CODES (NEC STANDARD)**

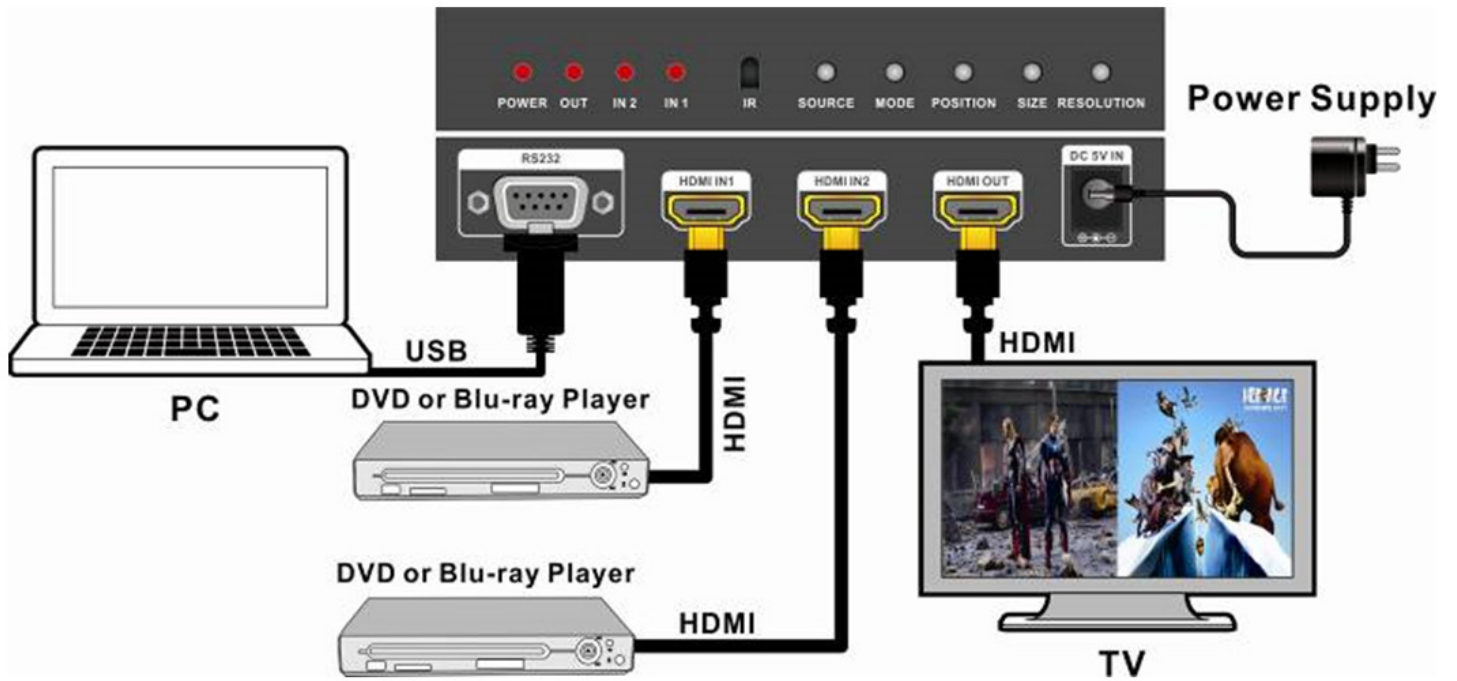
**CUSTOM CODE: 86E7**

**DATA CODES:**

POWER:	86E7	04	<b>POSITION:</b>		
IN1:	86E7	00	UP:	86E7	17
IN2:	86E7	43	DOWN:	86E7	1B
SIZE:	86E7	42	LEFT:	86E7	1A
MODE:	86E7	16	RIGHT:	86E7	59
RESO:	86E7	0F			



APPLICATION EXAMPLE





## (4) MODE OPTIONS

### ① MODE 1: ONE-VIEW MODE



### ② MODE 2: PIP MODE



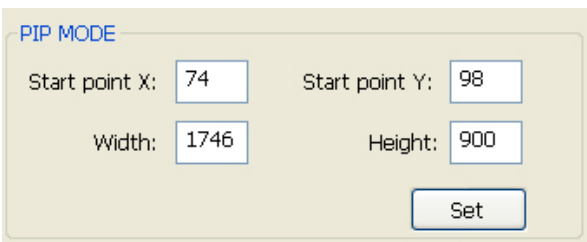
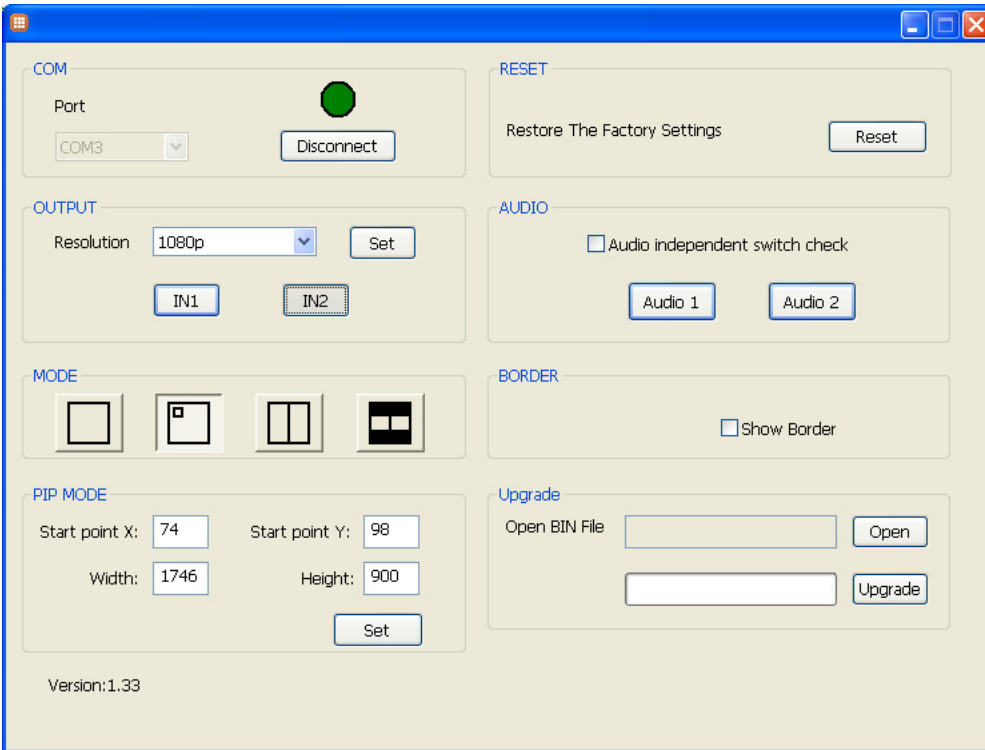
### ③ MODE 3: POP MODE A



### ④ MODE 4: POP MODE B



Windows GUI Software available for download. Works on WIN XP, WIN7 and WIN10.



**Start Point X:** Is the starting position of the horizontal axis. "0" will be the top left corner.  
**Width:** (W) is the width of the image. Max value is dependent on the Output resolution.  
**Start Point Y:** Is the starting position of the vertical axis. "0" will be the top left corner.  
**Height:** (H) is the height of the image.

**Example 1:** If the Output resolution is 1920x1080p.

X	0	Y	0
Width	1920	Height	1080

That means,  $X+W=1920$ .  
 The resulting image will be full screen. (Not practical)

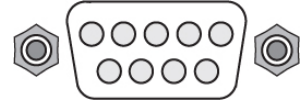
**Example 2:** If the Output resolution is 1920x1080p.

X	960	Y	540
Width	960	Height	540

That means,  $X+W=1920$ .  
 The resulting image will be PiP in the lower right corner.

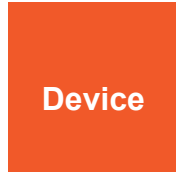
## RS-232 SERIAL INTERFACE FOR CONNECTION TO A PC OR 3RD PARTY CONTROLLER

1. Transmission rate: 115200bps
  2. Data format: 8 data bits, No parity, 1 start bit and 1 stop bit
  3. Flowing control: None
- Also know as 115200,8,n,1



### RS-232 CONFIGURATION

RS-232 cable is a straight thru cable and not null-modem



Definition	Pin		Pin	Definition
	1		1	DCD
TX	2		2	RX
RX	3		3	TX
	4		4	DTR
GND	5		5	GND
	6		6	DSR
	7		7	RTS
	8		8	CTS
	9		9	RI



### Data String Format

The data string must conclude with an explanation point "!" (without the quotes).  
All text is full ASCII Code and is **NOT** case sensitive.

## COMMANDS

COMMAND	ACTION	ANI-QUAD-MINI RETURNS
T1!	Change resolution to 1080p	Resolution: 1080p/60
T2!	Change resolution to 720p	Resolution: 720p/60
T3!	Change resolution to 1080i	Resolution: 1080i/60
T4!	Change resolution to 1360x768	Resolution: 1024x768/60
T5!	Change resolution to 1024x768	Resolution: 1360x768/60
IN1!	Select input 1	Input 1 select
IN2!	Select input 2	Input 2 select
ONEINPUT!	Select mode QUAD	Mode: QUAD
PIP!	Select mode PIP	Mode: PIP
SIDEBYSIDE1!	Select mode POP1	Mode: POP1
SIDEBYSIDE2!	Select mode POP2	Mode: POP2
?VERSION!	Check software version	V 1.7
RESET!	Factory Reset	Factory Reset
POWERON!	System power on	PowerON
POWEROFF!	System power off	PowerOFF
AM0!	Audio switch follow Video	Audio switch follows Video
AM1!	Audio independent switch	Audio independent switch
IA1!	Select audio Input 1	Audio select 1
IA2!	Select audio Input 2	Audio select 2
PSx,y,w,h!	Change PiP Location and Height <b>Example:</b> PS0,0,100,200!	x 0 y 0 w 100 h 200 See pg8 GUI Interface for more info

PLEASE READ THE FOLLOWING TERMS AND CONDITIONS CAREFULLY BEFORE USING THIS HARDWARE, COMPONENTS AND SOFTWARE PROVIDED BY, THROUGH OR UNDER A-NeuVideo, INC (COLLECTIVELY, THE "PRODUCT"). By using installing or using the Product, you unconditionally signify your agreement to these Terms and Conditions. If you do not agree to these Terms and Conditions, do not use the Product and return the Product to A-NeuVideo, Inc. at the return address set forth on the Product's packing label at your expense. A-NeuVideo, Inc. may modify these Terms and Conditions at anytime, without notice to you.

**RESTRICTIONS ON USE OF THE PRODUCT**

It is your responsibility to read and understand the installation and operation instructions, both verbal and in writing, provided to you with respect to the Product. You are authorized to use the Product solely in connection with such instructions. Any use of the Product not in accordance with such instructions shall void any warranty pertaining to the Product. Any and all damages that may occur in the use of the Product that is not strictly in accordance with such instructions shall be borne by you and you agree to indemnify and hold harmless A-NeuVideo, Inc. from and against any such damage.

The Product is protected by certain intellectual property rights owned by or licensed to A-NeuVideo. Any intellectual property rights pertaining to the Product are licensed to you by A-NeuVideo, Inc. and/or its affiliates, including any manufacturers or distributors of the Product (collectively, "A-NeuVideo") for your personal use only, provided that you do not change or delete any proprietary notices that may be provided with respect to the Product.

The Product is sold to you and any use of any associated intellectual property is deemed to be licensed to you by A-NeuVideo for your personal use only. A-NeuVideo does not transfer either the title or the intellectual property rights to the Product and A-NeuVideo retains full and complete title to the intellectual property rights therein. All trademarks and logos are owned by A-NeuVideo or its licensors and providers of the Product, and you may not copy or use them in any manner without the prior written consent of A-NeuVideo, which consent may be withheld at the sole discretion of A-NeuVideo.

The functionality and usability of the Product is controlled by A-NeuVideo, Inc. from its offices within the State of Texas, United States of America. A-NeuVideo makes no representation that materials pertaining to the Product are appropriate or available for use in other locations other than the shipping address you provided with respect thereto. You are advised that the Product may be subject to U.S. export controls.

**DISCLAIMERS AND LIMITATION OF LIABILITY**

A-NeuVideo may change or modify the Product at any time, from time to time.

THE PRODUCT IS PROVIDED "AS IS" AND WITHOUT WARRANTIES OF ANY KIND EITHER EXPRESS OR IMPLIED. A-NEUVIDEO DOES NOT WARRANT OR MAKE ANY REPRESENTATIONS REGARDING THE USE OR THE RESULTS OF THE USE OF THE PRODUCT'S CORRECTNESS, ACCURACY, RELIABILITY, OR OTHERWISE.

A-NeuVideo has no duty or policy to update any information or statements pertaining to the Product and, therefore, such information or statements should not be relied upon as being current as of the date you use the Product. Moreover, any portion of the materials pertaining to the Product may include technical inaccuracies or typographical errors. Changes may be made from time to time without notice with respect to the Product.

TO THE FULLEST EXTENT PERMISSIBLE PURSUANT TO APPLICABLE LAW, A-NEUVIDEO DISCLAIMS ALL WARRANTIES, EXPRESS OR IMPLIED, INCLUDING, BUT NOT LIMITED TO IMPLIED WARRANTIES OF MERCHANTABILITY, FITNESS FOR A PARTICULAR PURPOSE AND NON-INFRINGEMENT. A-NEUVIDEO DOES NOT WARRANT THE ACCURACY, COMPLETENESS OR USEFULNESS OF ANY INFORMATION WITH RESPECT TO THE PRODUCT. A-NEUVIDEO DOES NOT WARRANT THAT THE FUNCTIONS PERTAINING TO THE PRODUCT WILL BE ERROR-FREE, THAT DEFECTS WITH RESPECT TO THE PRODUCT WILL BE CORRECTED, OR THAT THE MATERIALS PERTAINING THERETO ARE FREE OF DEFECTS OR OTHER HARMFUL COMPONENTS. A-NEUVIDEO WILL USE ITS REASONABLE EFFORTS TO CORRECT ANY DEFECTS IN THE PRODUCT UPON TIMELY WRITTEN NOTICE FROM YOU NOT TO EXCEED 10 BUSINESS DAYS AFTER RECEIPT BY YOU OF THE PRODUCT, BUT YOU (AND NOT A-NEUVIDEO) ASSUME THE ENTIRE COST OF ALL NECESSARY SERVICING, REPAIR AND CORRECTION THAT WAS CAUSED BY YOU UNLESS OTHERWISE AGREED TO IN A SEPARATE WRITING BY A-NEUVIDEO.

UNDER NO CIRCUMSTANCES, INCLUDING, BUT NOT LIMITED TO, NEGLIGENCE, SHALL A-NEUVIDEO BE LIABLE FOR ANY SPECIAL OR CONSEQUENTIAL DAMAGES THAT RESULT FROM THE USE OF, OR THE INABILITY TO USE THE PRODUCT IN ACCORDANCE WITH ITS SPECIFICATIONS, EVEN IF A-NEUVIDEO OR ITS REPRESENTATIVES HAVE BEEN ADVISED OF THE POSSIBILITY OF SUCH DAMAGES. IN NO EVENT SHALL A-NEUVIDEO'S TOTAL LIABILITY TO YOU FROM ALL DAMAGES, LOSSES, AND CAUSES OF ACTION (WHETHER IN CONTRACT, OR OTHERWISE) EXCEED THE AMOUNT YOU PAID TO A-NEUVIDEO, IF ANY, FOR THE PRODUCT.