

# ANI-QUAD-GRPHX

4x1 HDMI Seamless Quad PiP/PoP Scaler  
With Graphic Insert Overlay Feature





## SAFETY INFORMATION



1. To ensure the best results from this product, please read this manual and all other documentation before operating your equipment. Retain all documentation for future reference.
2. Follow all instructions printed on unit chassis for proper operation.
3. To reduce the risk of fire, do not spill water or other liquids into or on the unit, or operate the unit while standing in liquid.
4. Make sure power outlets conform to the power requirements listed on the back of the unit. Keep unit protected from rain, water and excessive moisture.
5. Do not attempt to clean the unit with chemical solvents or aerosol cleaners, as this may damage the unit. Dust with a clean dry cloth.
6. Do not use the unit if the electrical power cord is frayed or broken. The power supply cords should be routed so that they are not likely to be walked on or pinched by items placed upon or against them, paying particular attention to cords and plugs, convenience receptacles, and the point where they exit from the appliance.
7. Do not force switched or external connections in any way. They should all connect easily, without needing to be forced.
8. Always operate the unit with the AC ground wire connected to the electrical system ground. Precautions should be taken so that the means of grounding of a piece of equipment is not defeated.
9. AC voltage must be correct and the same as that printed on the rear of the unit. Damage caused by connection to improper AC voltage is not covered by any warranty.
10. Turn power off and disconnect unit from AC current before making connections.
11. Never hold a power switch in the "ON" position.
12. This unit should be installed in a cool dry place, away from sources of excessive heat, vibration, dust, moisture and cold. Do not use the unit near stoves, heat registers, radiators, or other heat producing devices.
13. Do not block fan intake or exhaust ports. Do not operate equipment on a surface or in an environment which may impede the normal flow of air around the unit, such as a bed, rug, carpet, or completely enclosed rack. If the unit is used in an extremely dusty or smoky environment, the unit should be periodically "blown free" of foreign dust and matter.
14. To reduce the risk of electric shock, do not remove the cover. There are no user serviceable parts inside. Refer all servicing to qualified service personnel. There are no user serviceable parts inside.
15. When moving the unit, disconnect input ports first, then remove the power cable; finally, disconnect the interconnecting cables to other devices.
16. Do not drive the inputs with a signal level greater than that required to drive equipment to full output.
17. The equipment power cord should be unplugged from the outlet when left unused for a long period of time.
18. Save the carton and packing material even if the equipment has arrived in good condition. Should you ever need to ship the unit, use only the original factory packing.
19. Service Information Equipment should be serviced by qualified service personnel when:
  - A. The power supply cord or the plug has been damaged.
  - B. Objects have fallen, or liquid has been spilled into the equipment.
  - C. The equipment has been exposed to rain
  - D. The equipment does not appear to operate normally, or exhibits a marked change in performance
  - E. The equipment has been dropped, or the enclosure damaged.

**▶ CONTENTS**

INTRODUCTION & CONTENTS .....1  
 FEATURES & SPECIFICATIONS ..... 2  
 OPERATION CONTROLS & FUNCTIONS ..... 3  
     FRONT PANEL CONNECTION .....3  
     REAR PANEL CONNECTION .....3  
     REMOTE CONTROL .....4  
 OSD MENU .....5  
 RS-232 PROTOCOLS ..... 8  
 TIMING SUPPORTED ..... 8  
 RS-232 & TELNET COMMANDS ..... 9  
 TELNET CONTROL ..... 14  
 WEB GUI INTERFACE .....15  
 CONNECTION & INSTALLATION .....19

**DEAR CUSTOMER**

Thank you for purchasing this product. For optimum performance and safety, please read these instructions carefully before connecting, operating or adjusting this product. Please keep this manual for future reference.

**INTRODUCTION**

The ANI-QUAD-GRPHX 4x1 HDMI Seamless Quad PiP Scaler is a high performance, high speed zooming/shrinking system that can be easily configure and controlled for quad or picture-in-picture video processing. Allowing (4) different input sources to be freely selected and arranged on one single display. Supporting output resolutions up to 1080p and audio up to 8CH 192kHz for both inputs and outputs. Screen setting hot keys with IR, RS-232, WebGUI and Telnet allows instant control and switching on the output display. Additionally, this unit features a free logo upload option that will appear on the output display.

**PACKAGE CONTENTS**

Before attempting to use this unit, please check the packaging and make sure the following items are contained in the shipping carton:

- ANI-QUAD-GRPHX 4x1 HDMI Seamless Quad PiP/PoP Scaler
- Remote Control
- 12V/3A DC Power Adaptor
- Rack Ear Sets
- Users Guide

**APPLICATIONS**

- Broadcasting room and control
- Surveillance room and control
- Public advertisement and control
- Digital Presentation

**SAFETY PRECAUTIONS**

Please read all instructions before attempting to unpack, install or operate this equipment and before connecting the power supply. Please keep the following in mind as you unpack and install this equipment:

- Always follow basic safety precautions to reduce the risk of fire, electrical shock and injury to persons.
- To prevent fire or shock hazard, do not expose the unit to rain, moisture or install this product near water.
- Never spill liquid of any kind on or into this product.
- Never push an object of any kind into this product through any openings or empty slots in the unit, as you may damage parts inside the unit.
- Do not attach the power supply cabling to building surfaces.
- Use only the supplied power supply unit (PSU). Do not use the PSU if it is damaged.
- Do not allow anything to rest on the power cabling or allow any weight to be placed upon it or any person walk on it.
- To protect the unit from overheating, do not block any vents or openings in the unit housing that provide ventilation and allow for sufficient space for air to circulate around the unit.

**DISCLAIMERS**

The information in this manual has been carefully checked and is believed to be accurate. We assume no responsibility for any infringements of patents or other rights of third parties which may result from its use.

We assume no responsibility for any inaccuracies that may be contained in this document. We make no commitment to update or to keep current the information contained in this document.

We reserve the right to make improvements to this document and/or product at any time and without notice.

**COPYRIGHT NOTICE**

No part of this document may be reproduced, transmitted, transcribed, stored in a retrieval system, or any of its part translated into any language or computer file, in any form or by any means — electronic, mechanical, magnetic, optical, chemical, manual, or otherwise — without the express written permission and consent.

© Copyright 2015. All Rights Reserved.  
 Version 1.0 MAY 2016

**TRADEMARK ACKNOWLEDGMENTS**

All products or service names mentioned in this document may be trademarks of the companies with which they are associated.

## FEATURES

---

- Seamless switching between channels and windows
- Zoom and Shrink 4CH input images and/or overlay them
- Supports PiP, PoP and multi-windows display
- Supports OSD, RS-232, Telnet, WebGUI, Remote and on-panel controls
- Fade-In-Out, Chromakey, Mirror and Rotation (90° left & right and 180° up & down) functions
- (8) Screen setting hot keys and an extra (4) customizable favorite screen settings
- Supports easy individual channel, size and position adjustment
- Supports output image logo display with self-design logo file upload

## SYSTEM REQUIREMENTS

---

- Input source equipment such as DVD/Blu-ray players and PC/NB devices and output HD TV/monitor.

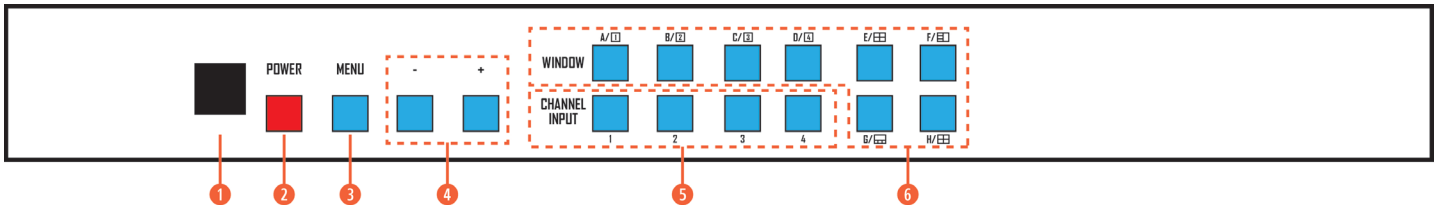
## SPECIFICATIONS

---

- **Video Bandwidth:** 225MHz/6.75Gbps
- **Input Ports:** (4) HDMI
- **Output Port:** (1) HDMI
- **Supports Input Resolutions:** PC: VGA~WUXGA, HD: 480i~1080p
- **Supports Output Resolutions:** 1080p@60
- **HDMI Input Cable Distance:** Up to ~50 ft/15M 1080p@12 bits
- **HDMI Output Cable Distance:** Up to ~50 ft/15M 1080p@8 bits
- **Supports Sampling Rates:** 32~192kHz
- **ESD Protection Human Body Model:**
  - ±8kV (air-gap discharge)
  - ±4kV (contact-gap discharge)
- **Power Supply:** 12V/3A DC (US/EU standards, CE/FCC/UL certified)
- **Dimensions (WxDxH):** 17.2 x 9.7 x 1.7 in (436x246x44mm) (Jack Excluded) / 17.2 x 9.7 x 1.9 in (436x256x49mm) (Jack Included)
- **Weight:** 4.85 lb/2200g
- **Chassis Material:** Aluminum
- **Silkscreen Color:** Black
- **Operating Temperature:** 0°C ~ 40°C / 32°F ~ 104°F
- **Storage Temperature:** -20°C ~ 60°C / -4°F ~ 140°F
- **Relative Humidity:** 20 ~ 90 % RH (non-condensing)
- **Power Consumption:** 18 W

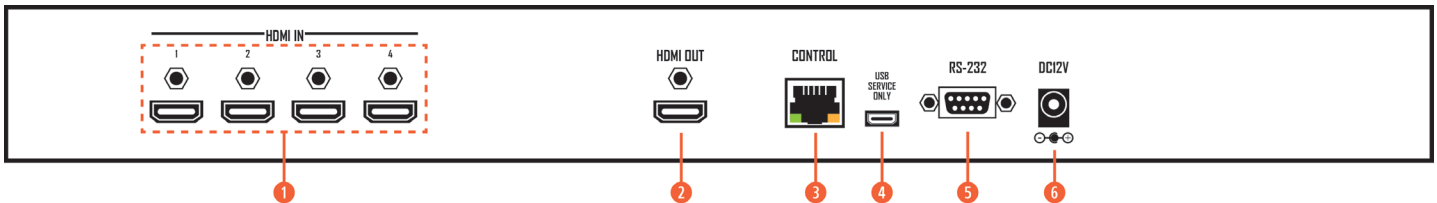
As product improvements are continuous, specifications are subject to change without notice.

## FRONT PANEL



- ① **IR WINDOW:** Accepts IR signal from the device's remote control included in the package.
- ② **POWER:** Press this button to power ON the device or set it to standby mode.
- ③ **MENU:** Press this button to bring up the OSD menu on screen.
- ④ **-/+ BUTTONS:** Press these buttons to scroll up /down the OSD selections.
- ⑤ **CHANNEL INPUT 1~4:** Press these buttons to rotate HDMI 1~4 input source on each channel to be displayed on screen. All channels can select the same input or each channel a different input.
- ⑥ **WINDOW A~H:** Press these hot keys to select the screen setting where A~D display a full screen of each channel and E~H are a different combination of a full screen setting of all (4) channels. Windows A~D channel input selection is corresponding to the channel input No. 1~4. That is, to change window A's input channel, you must press the channel input 1 button. Channel input 2~4 buttons will not activate under window A's selection. Windows E~H's sizes are adjustable through the OSD menu setting and only window G is PiP (Picture in Picture) where E, F & H have PoP (Picture out Of picture) settings. Under window E~H when the size setting is overlapping one another, the channel display sequence is CH4 > CH3 > CH2 >CH1. That is, CH4 will cover CH3 and CH3 will cover CH2 and so on. Under some displays the borderline may have interference, adjusting the display's motion setting may resolve the interference issue.

## REAR PANEL

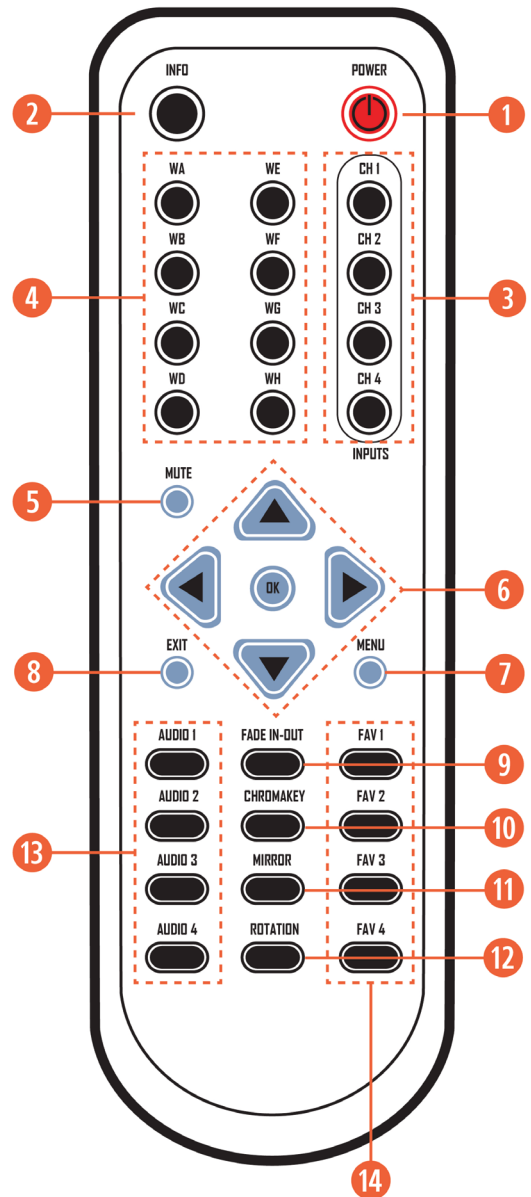


- ① **HDMI IN:** Connect with source equipment such as DVD/Blu-ray players and/or PC/NB devices.
- ② **HDMI OUT:** Connect with HD TV/monitor for output image display at 1080p.
- ③ **CONTROL:** Connect to an active network for Telnet control.
- ④ **USB SERVICE ONLY:** This slot is reserved for logo file upload and factory use only.
  - LOGO FILE REQUIREMENTS:** .bmp file with color 256 only with size up to 512x512.
  - UPLOAD PROCEDURE:** Enter into **OSD menu**→**IO Setup**→**LOGO Setting**→**Load New LOGO**, now both Window A and CH 1's button LED will illuminate, plug this USB port to your PC/Laptop and wait for USB window to pop up.
  - Drag and load the logo file into the USB window or into "COPY LOGO" and upload will be automatically proceed. Wait for 1~2 minute the device will reboot itself and the upload is succeed.
- ⑤ **RS-232:** Connect from PC/NB with D-Sub 15pin cable for RS-232 command sending.
- ⑥ **DC 12V:** Plug the 12V DC power supply into the unit and connect the adaptor to an AC outlet.

## OUTPUT RESOLUTIONS

- ❶ **POWER:** Press this button to switch on the device or press it again to set it to standby mode.
- ❷ **INFO:** Press this button to show the device's firmware version.
- ❸ **INPUT CH 1~4:** Press these buttons to rotate HDMI 1~4 input source on each channel to be display on screen.
- ❹ **WA~WH:** Press these hot keys to select the screen setting where WA~WD are display a full screen of each channel and WE~WH are a different combination of a full screen setting with all 4 channels.
- ❺ **MUTE:** Press this button to mute the audio from HDMI output port.
- ❻ **▲▼▶◀ & OK BUTTONS:** Press this buttons to scroll through the OSD selection and press OK to enter and confirm the setting.
- ❼ **MENU:** Press this button to enter into the OSD menu.
- ❽ **EXIT:** Press this button to exit the OSD menu or the OSD settings.
- ❾ **FADE-IN-OUT\*:** Press this button to switch on or off the Fade-in-out function.
- ❿ **CHROMAKEY\*:** Press this button to enter into Chroma function where CH 1 is the background and CH 2 is the top image.
- ⓫ **MIRROR\*:** Press this button to display the screen in mirror image.
- ⓬ **ROTATION\*:** Press this button to rotate the image 90° left and right or 180° upside down.
- ⓭ **AUDIO 1~4:** Press these buttons to select audio from HDMI input source 1~4.
- ⓮ **FAV. 1~4:** Press these buttons to bring up the customized screen settings.

\* Functions only work under Window A to D. The system will force to switch to Window A when operate under Window E~H.



OSD MENU

Note: **Bold** or *Italic* fonts and ( ) figures are factory default setting figures.

MAIN MENU	1ST LAYER	2ND LAYER	3RD LAYER
Image Adjust	Image Still Adjust	CH1	On/ <b>Off</b>
		CH2	On/ <b>Off</b>
		CH3	On/ <b>Off</b>
		CH4	On/ <b>Off</b>
		All Channel	On/ <b>Off</b>
		Menu Exit	
	Image Swap	CH 1 CH 2 Swap	
		CH 1 CH 3 Swap	
		CH 1 CH 4 Swap	
		CH 2 CH 3 Swap	
		CH 2 CH 4 Swap	
		CH 3 CH 4 Swap	
	Window Setup	Channel 1/2/3/4 Select	Size Wxxx Hxxx
Width Ten			
Width Hundred			
Height Unit			
Height Ten			
Height Hundred			
Value Rest			
Menu Exit			
Position Wxxx Hxxx			Height Unit
			Height Ten
			Height Hundred
			Value Rest
			Menu Exit
Image Output		<b>On/Off</b>	
Priority		1~4	
Window Reset			
Menu Exit			
Label Select		Video 1	Rename up to 9 characters
		Video 2	Rename up to 9 characters
		Video 3	Rename up to 9 characters
	Video 4	Rename up to 9 characters	
	Menu Exit		
Store Favorites	FAV 1 Store	On/ <b>Off</b>	
	FAV 2 Store	On/ <b>Off</b>	
	FAV 3 Store	On/ <b>Off</b>	
	FAV 4 Store	On/ <b>Off</b>	
	Menu Exit		

OSD MENU

MAIN MENU	1ST LAYER	2ND LAYER	3RD LAYER
Window Convert	Channel 1/2/3/4 Convert	Mirror	On/Off
		Fade In-Out	Off/1.0/1.1/1.2/1.3/1.4/1.5/1.6/1.7/1.8/1.9/2.0/2.1/2.2/2.3/2.4/2.5/2.6/2.7/2.8/2.9/3.0
		Rotation	L90/R90/180/Off
		Window Reset	
		Menu Exit	
Chromakey Setup*	User 1	Minimum for R/G/B	000~255 (0)
		Maximum for R/G/B	222~255 (255)
	User 2	Minimum for R/G/B	000~255 (0)
		Maximum for R/G/B	222~255 (255)
	White	Minimum for R/G/B	000~255 (233)
		Maximum for R/G/B	222~255 (255)
	Yellow	Minimum for R/G/B	000~255 (233/233/0)
		Maximum for R/G/B	222~255 (255/255/16)
	Cyan	Minimum for R/G/B	000~255 (233/0/233)
		Maximum for R/G/B	222~255 (255/16/255)
	Green	Minimum for R/G/B	000~255 (233/0/0)
		Maximum for R/G/B	222~255 (255/16/16)
	Magenta	Minimum for R/G/B	000~255 (0/233/233)
		Maximum for R/G/B	222~255 (16/255/255)
	Red	Minimum for R/G/B	000~255 (0/233/0)
		Maximum for R/G/B	222~255 (0/233/0)
	Blue	Minimum for R/G/B	000~255 (0/0/232)
		Maximum for R/G/B	222~255 (16/16/255)
	Black	Minimum for R/G/B	000~255 (0)
		Maximum for R/G/B	222~255 (16)
Switch	On/Off		
Exit			
Ethernet Setup	IP Mode	Static/DHCP	
	Static Set	IP/Mask/Gate	
	Byte1 High	192	
	Byte2	168	
	Byte3	1	
	Byte4 Low	50	
	Time Out	OFF/10/20/30/40/50/60min	
	Re-Link	No/Yes	
	Exit		
	Static/DHCP IP	LINKED/NOT LINKED	
	IP	IP/Mask/Gate	
	Mask	xxx. xxx. xxx. xxx	
	Gate	xxx. xxx. xxx. xxx	
	Mac	xxx. xxx. xxx. xxx	
	Sink HDMI/DVI		



## OSD MENU

MAIN MENU	1ST LAYER	2ND LAYER	3RD LAYER
<b>Audio Setup</b>	<b>Audio Source</b>	Mute/CH1/2/3/4	
<b>Sys Reset</b>	<b>On/Off</b>		
<b>Information</b>	Screen HDMI		
	Native xxxxxx		
	F/W version vx.xx		
	F/W Upgrade		
	Menu Exit		
<b>Menu Exit</b>			

\* Chromakey Setup works only under CH1& CH2 where CH1 is the background and CH2 is the top layer. This special function is designed for picture overlap video such as news reports, weather forecasts or educational videos. CH2 the top layer's background color is usually a single color which can be easy for removed. The RGB settings for CH2 video, are such that the minimum setting figures cannot be greater than the maximum figures and the maximum figures cannot be lower than the minimum setting figures. When input 1 or 2 has no source connection a warning message will appear on OSD.

**TIMING SUPPORTED**

INPUT TIMING SUPPORTED	OUTPUT TIMING SUPPORTED
640x480@60,72,75,85	1024x768@60,70,75,85 V@60
800x600@56,60,72,75,85	1280x800@60
1024x768@60,70,75,85	1280x1024@60,75 V@60
1360x768@60	1366x768@60
1280x768@60,75	1440x900@60
1280x1024@60,75	1600x900@60
1366x768@60	1600x1200@60
1600x1200@60	480p60
1920x1200@60	576p50
480i60	720p50
576i50	720p60
480p60	1080p24
576p50	1080p25
720p50	1080p30
720p60	1080p50
1080i50	1080p60
1080i60	
1080p24	
1080p50	
1080p60	

**RS-232 PROTOCOLS**

ANI-QUAD-GRPHX		REMOTE CONTROL	
PIN	ASSIGNMENT	PIN	ASSIGNMENT
1	NC	1	NC
2	Tx	2	Rx
3	Rx	3	Tx
4	NC	4	NC
5	GND	5	GND
6	NC	6	NC
7	NC	7	NC
8	NC	8	NC
9	NC	9	NC

Baud Rate: 115200bps  
 Data Bit: 8 bits  
 Parity: None  
 Flow Control: None  
 Stop Bit: 1

**RS-232 AND TELNET COMMANDS**

COMMAND CODE	DESCRIPTION	PARAMETER
?	PRINTS ALL AVAILABLE RS-232/TELNET COMMANDS TO THE SCREEN	
HELP	PRINTS ALL AVAILABLE RS-232/TELNET COMMANDS TO THE SCREEN	
SPOW 0/1	SET THE UNIT POWER ON/OFF	0=OFF, 1=ON
RPOW	SHOW CURRENT POWER STATE	
SRES 0~18	SET OUTPUT RESOLUTION	(0) 480p 60Hz (1) 576p 50Hz (2) 720p 50Hz (3) 720p 60Hz (4) 1080p 24Hz (5) 1080p 25Hz (6) 1080p 30Hz (7) 1080p 50Hz (8) 1080p 60Hz (9) 1024x768 60Hz (10) 1280x800 60Hz (11) 1280x1024 60Hz (12) 1366x768 60Hz (13) 1440x900 60Hz (14) 1600x900 60Hz (15)1600x1200 60Hz (16) 1680x1050 60Hz (17) 1920x1200 60Hz (18) Native
RRES	SHOW CURRENT OUTPUT RESOLUTION	
SIOSDD 0/1	ENABLE/DISABLE ONSCREEN INFORMATION DISPLAY	0=OFF,1=ON (0)
RIOSDD	SHOW INFORMATION OSD DISPLAY CURRENT STATE	
SOSDH 0~20	SET OSD HORIZONTAL POSITION	0~20 (5)
ROSDH	SHOW OSD HORIZONTAL POSITION CURRENT	
SOSDV 0~20	SET OSD VERTICAL POSITION	0~20 (5)
ROSDV	SHOW OSD VERTICAL POSITION CURRENT	
SOSDT 0, 5~50	SET OSD DISPLAY TIME	0=OSD OFF OSDTIME (5~50 sec) DEFAULT=10sec
ROSDT	SHOW OSD DISPLAY CURRENT TIME	
SOSDG 0~10	SET OSD TRANSPARENT VALUE	0~10 (5)
ROSDG	SHOW OSD TRANSPARENT CURRENT VALUE	
SBRI N M	SET BRIGHTNESS VALUE FOR INPUT CHANNEL	N=0/All, 1~4/CHANNEL M=0~100 (50)
RBRI	SHOW BRIGHTNESS CURRENT VALUE FOR INPUT CHANNEL	0=All, 1~4
RCON	SHOW CONTRAST CURRENT VALUE	0=All, 1~4
SSAT N M	SET SATURATION VALUE FOR INPUT CHANNEL	N=0/All, 1~4/CHANNEL M=0~100 (50)
RSAT	SHOW SATURATION CURRENT VALUE	0=All, 1~4
SHUE N M	SET HUE VALUE FOR INPUT CHANNEL	N=0/All, 1~4/CHANNEL M=0~100 (50)
RHUE	SHOW HUE CURRENT VALUE	0=All, 1~4
SSTILL N M	SET IMAGE STILL	N=0/All, 1~4/CHANNEL M=0/OFF, 1/ON (0)
RSTILL	SHOW IMAGE CURRENT STILL STATUS	0=All, 1~4

COMMAND CODE	DESCRIPTION	SYNTAX
SSWAP (0~5)	SET OUTPUT IMAGE SWAP	0= CH1 CH2 SWAP 1= CH1 CH3 SWAP 2= CH1 CH4 SWAP 3= CH2 CH3 SWAP 4= CH2 CH4 SWAP 5= CH3 CH4 SWAP
RSWAP	SHOW IMAGE CURRENT INPUT SOURCE	0=CH1 CH2 CURRENT INPUT SOURCE 1=CH1 CH3 CURRENT INPUT SOURCE 2=CH1 CH4 CURRENT INPUT SOURCE 3=CH2 CH3 CURRENT INPUT SOURCE 4=CH2 CH4 CURRENT INPUT SOURCE 5=CH3 CH4 CURRENT INPUT SOURCE
SPIRE	RESET BRIGHTNESS, CONTRAST, SATURATION, HUE. ALL CHANNEL VALUE TO DEFAULT	
SIMRE 1~4	RESET BRIGHTNESS, CONTRAST, SATURATION or HUE, VALUE TO DEFAULT	1=BRIGHTNESS 2=CONTRAST 3=SATURATION 4=HUE
SHSIZE N M	SET IMAGE HORIZONTAL SIZE	N=1~4 M=0~X HORIZONTAL SIZE FOR CURRENT RESOLUTION
RHSIZE	SHOW IMAGE HORIZONTAL SIZE CURRENT VALUE	1~4 CHANNEL HORIZONTAL SIZE
SVSIZE N M	SET IMAGE VERTICAL SIZE	N=1~4 M=0~X VERTICAL PIXEL FOR CURRENT RESOLUTION
RVSIZE	SHOW IMAGE VERTICAL SIZE CURRENT VALUE	1~4 CHANNEL VERTICAL SIZE
SHPOS N M	SET HORIZONTAL POSITION OF SPECIFIED CHANNEL	N=1~4 M=0~X HORIZONTAL PIXEL FOR CURRENT RESOLUTION
RHPOS	SHOW IMAGE HORIZONTAL POSITION CURRENT VALUE	1~4 CHANNEL HORIZONTAL POSITION
SVPOS N M	SET VERTICAL POSITION OF SPECIFIED CHANNEL	N=1~4 M=0~X VERTICAL PIXEL FOR CURRENT RESOLUTION
RVPOS	SHOW IMAGE VERTICAL POSITION CURRENT VALUE	1~4 CHANNEL VERTICAL POSITION
SIMAGE N M	SET OUTPUT CHANNEL IMAGE ON/OFF	N= 1~4 M=0/OFF, 1/ON
RIMAGE	SHOW OUTPUT CHANNEL IMAGE CURRENT	(0)=ALL CHANNEL (1~4)=CHANNEL 1~4
SPRI N M	SET WINDOWS PRIORITY	N= CHANNEL 1~4 M= PRIORITY 1~4
RPRI	SHOW WINDOWS PRIORITY	0=ALL CHANNEL 1~4=CHANNEL 1~4

COMMAND CODE	DESCRIPTION	SYNTAX
SLABEL N M	ASSIGN A PRESET NAME	N= CHANNEL 1~4 M= A~Z/0~9....
RLABEL	SHOW PRESET NAME TO SCREEN	0=ALL CHANNEL 1~4=CHANNEL 1~4
SSTORE 1~4	SAVE THE CURRENT WINDOW TO FAV1~FAV4	1~4= FAV1~FAV4
SRECALL 1~12	SET A OUTPUT WINDOWS TO WINDOWS A~WINDOWS FAV4	(1) WA (2) WB (3) WC (4) WD (5) WE (6) WF (7) WG (8) WH (9) FAV1 (10) FAV2 (11) FAV3 (12) FAV4
SMIRROR 0/1	SET ENABLE/DISABLE MIRROR EFFECT	0=OFF, 1=ON
RMIRROR	SHOW MIRROR CURRENT TO SCREEN	
SFADE 0~21	SET FADE IN-OUT TIME	(0) OFF (1) 1.0 s (2) 1.1s (3) 1.2s (4) 1.3s (5) 1.4s (6) 1.5s (7) 1.6s (8) 1.7s (9) 1.8s (10) 1.9s (11) 2.0s (12) 2.1s (13) 2.2s (14) 2.3s (15) 2.4s (16) 2.5s (17) 2.6s (18) 2.7s (19) 2.8s (20) 2.9s (21) 3.0s (0)
RFADE	SHOW FADE IN-OUT CURRENT TO SCREEN	
SROTATE 0~3	SET VIDEO ROTATION VIDEO TO PRESET POSITIONS	0=ROTATE OFF 1=R90 2=180 3=L90 (0)
RROTATE	SET CHROMAKEY COLOR FOR CHROMA KEY	
SCHRKS 0~9	SET OUTPUT CHANNEL IMAGE ON/OFF	(0) USER1 (1) USER2 (2) White (3) Yellow (4) Cyan (5) Green (6) Magenta (7) Red (8) Blue (9) Black (0)
RCHRKS	SHOW CHROMAKEY KEY COLOR CURRENT TO SCREEN	

COMMAND CODE	DESCRIPTION	SYNTAX
SCHRC N M	SET THE R,G,B COLOR RANGE FOR THE CHROMA KEY	N=0~11 (0) USER1 G MAX (1) USER1 G MIN (2) USER1 R MAX (3) USER1 R MIN (4) USER1 B MAX (5) USER2 B MIN (6) USER2 G MAX (7) USER2 G MIN (8) USER2 B MAX (9) USER2 B MIN (10) USER2 R MAX (11) USER2 R MIN M= VALUE 0~255
RCHRC 0~9	SHOW CHROMAKEY CURRENT TO SCREEN	(0) USER1 (1) USER2 (2) White (3) Yellow (4) Cyan (5) Green (6) Magenta (7) Red (8) Blue (9) Black
SCHRSW 0/1	SET ENABLE/DISABLE CHROMAKEY EFFECT	0=OFF, 1=ON (0)
RCHRSW	SHOW CHROMAKEY EFFECT CURRENT TO SCREEN	
SIPM 0/1	SET IP MODE TO DHCP OR STATI	0=0DHCP, 1=STATIC (1)
RIPM	SHOW CURRENT IP MODE TO SCREEN	
SIPADD N	SET STATIC IP ADDRESS	N=0~255
RIPADD	SHOW STATIC CURRENT IP ADDRESS TO SCREEN	
SMAADD N	SET STATIC SUBNET ADDRESS	N=0~255
RMAADD	SHOW STATIC CURRENT SUBNET ADDRESS TO SCREEN	
SGAADD N	SET STATIC GATEWAY ADDRESS	N=0~255
RGAADD	SHOW STATIC CURRENT GATEWAY ADDRESS TO SCREEN	
SEHT 0~6	SET ETHERNET TIMEOUT	(0) OFF (1) 10 MINUTE (2) 20 MINUTE (3) 30 MINUTE (4) 40 MINUTE (5) 50 MINUTE (6) 60 MINUTE (0)
REHT	SHOW ETHERNET TIMEOUT CURRENT TO SCREEN	
RELINK	RELINK THE UNIT IN 2 SECONDS	
SMAC 0~9, A~F	SET MAC ADDRESS	0~9, A~F
RMAC	SHOW CURRENT MAC ADDRESS TO SCREEN	
IPCONFIG	SHOW ETHERNET ADDRESS TO SCREEN	
DEFAULT	RESET THE UNIT TO FACTORY DEFAULTS	
SVICH N M	SET OUTPUT VIDEO CHANNEL TO SPECIFIED SOURCE	N=0~4 0=ALL CHANNEL 1~4=OUTPUT CHANNEL M=1~4 VIDEO SOURCE
RVICH	SHOW OUTPUT CHANNEL THE VIDEO SOURCE	

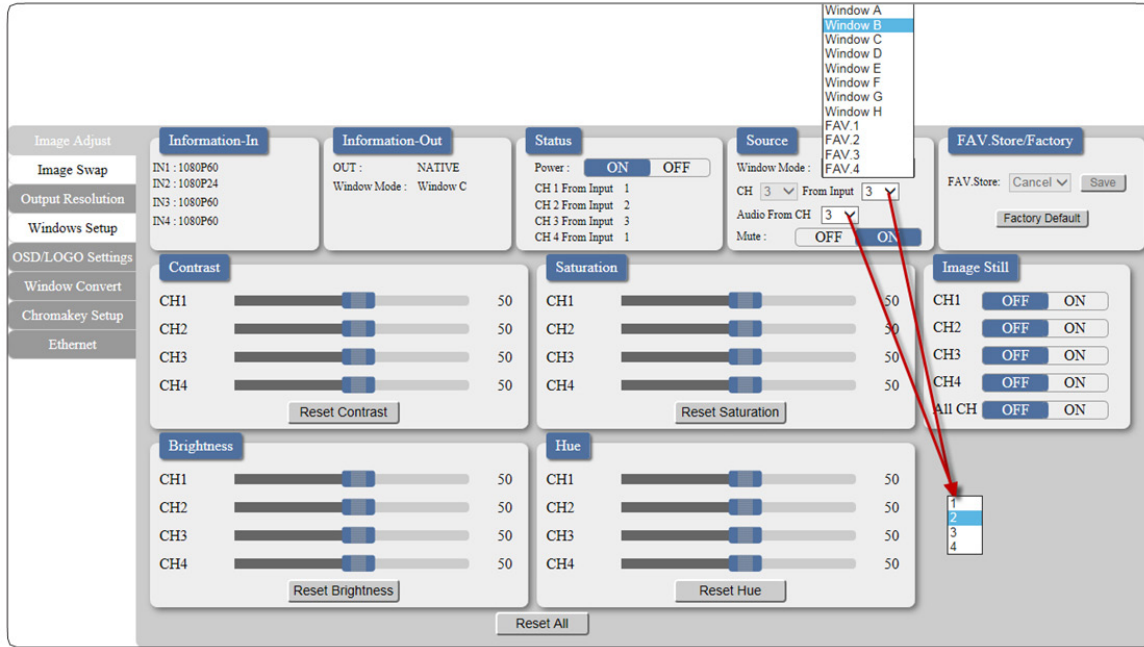
COMMAND CODE	DESCRIPTION	SYNTAX
SMUTE 0/1	SET MUTE AUDIO	0=MUTE 1= UNMUTED (1)
RMUTE	SHOW CURRENT MUTE TO SCREEN	
SAUDIO 1~4	SET OUTPUT AUDIO TO SPECIFIED SOURCE	1~4=INPUT AUDIO
RAUDIO	SHOW OUTPUT AUDIO SOURCE TO SCREEN	
SCHRE 0~4	<i>RESET THE WINDOWS E ~ WINDOWS FAV4 CH1~CH4 SETTINGS TO FACTORY DEFAULTS</i>	0=RESET ALL CHANNEL 1~4=RESET CHANNEL 1~4
<b>SWICORE</b>	<b>RESET THE WINDOWS A ~ D SETTINGS TO FACTORY DEFAULTS</b>	
RBIOS	SHOW BIOS VERSION TO SCREEN	
RLOGOD	SHOW DISPLAY LOGO CURRENT STATE	
SLOGOD 0/1	ENABLE/DISABLE DISPLAY LOGO	0=OFF, 1=ON
RLOGOH	SHOW LOGO HORIZONTAL POSITION CURRENT	
SLOGOH N	SET LOGO HORIZONTAL POSITION	N=HORIZONTAL PIXEL FOR CURRENT RESOLUTION
RLOGOV	SHOW LOGO VERTICAL POSITION CURRENT	0=OFF, 1=ON (0)
SLOGOV N	SET LOGO VERTICAL POSITION	N=VERTICAL PIXEL FOR CURRENT RESOLUTION
SDEFLOGO	LOAD DEFAULT LOGO	
SNEWLOGO	LOAD NEW LOGO	





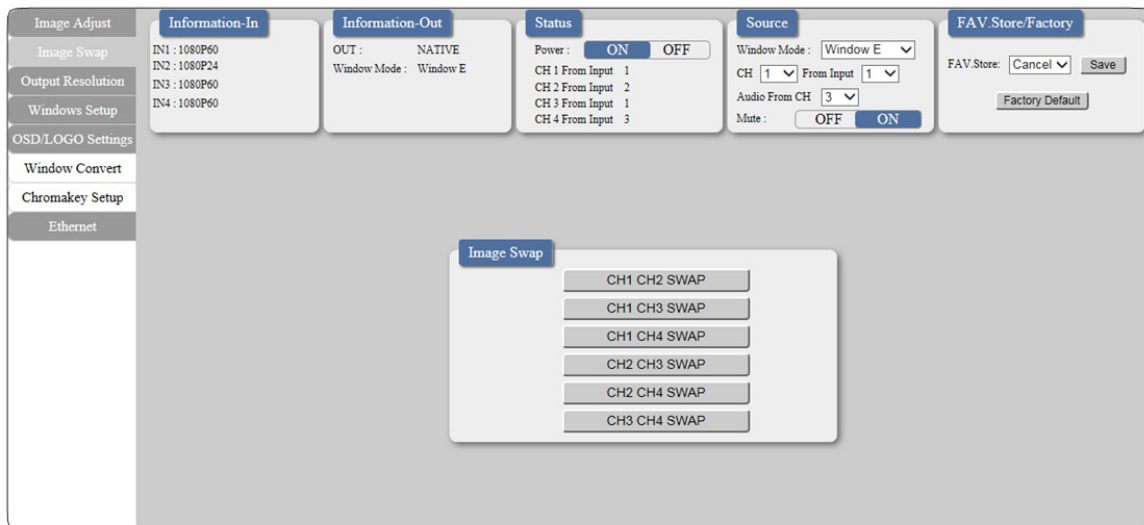
On a PC/Laptop that is connected to an active network as the Scaler, open a web browser and type device's IP address on the web address entry bar. The browser will display the device's Image Adjust, Output Resolution, and ... etc.

Click on the 'Image Adjust' tab to control power, Window Mode and the windows settings.

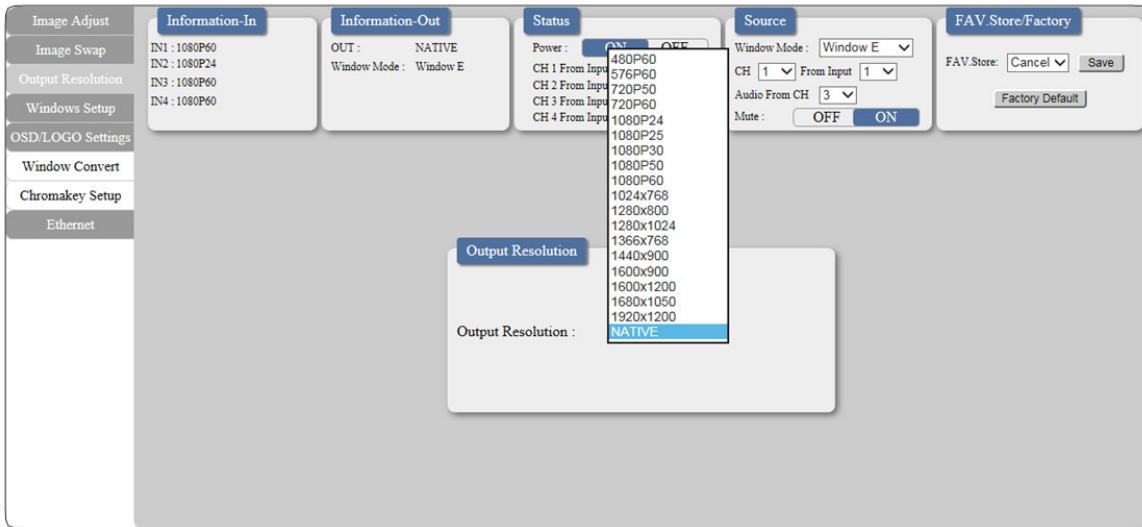


Click on 'Image Swap' to swap output channel's image display instantly.

**Note:** This function is only available under window E~H.

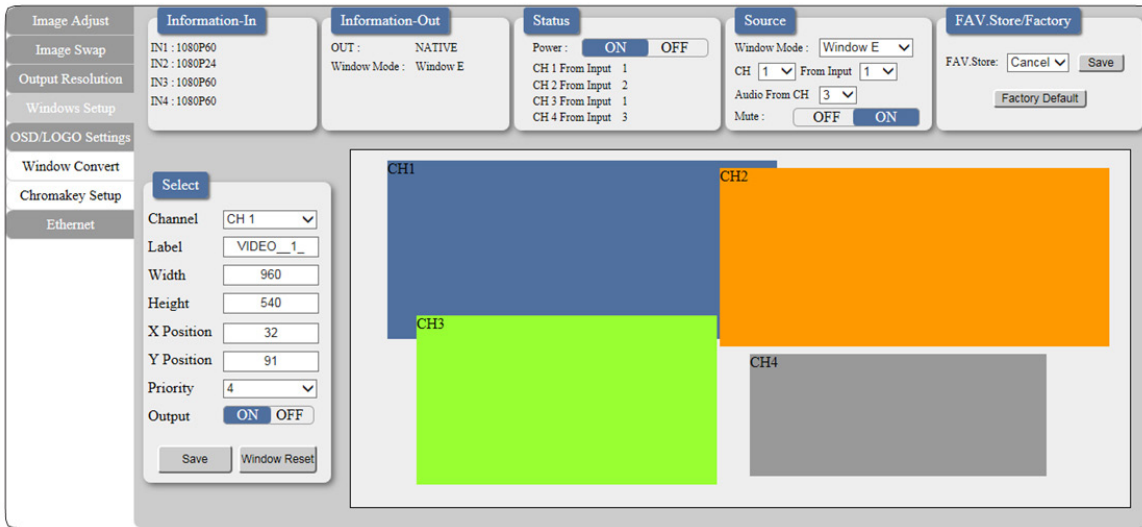


Click on the 'Output Resolution' tab to set the output display resolution.

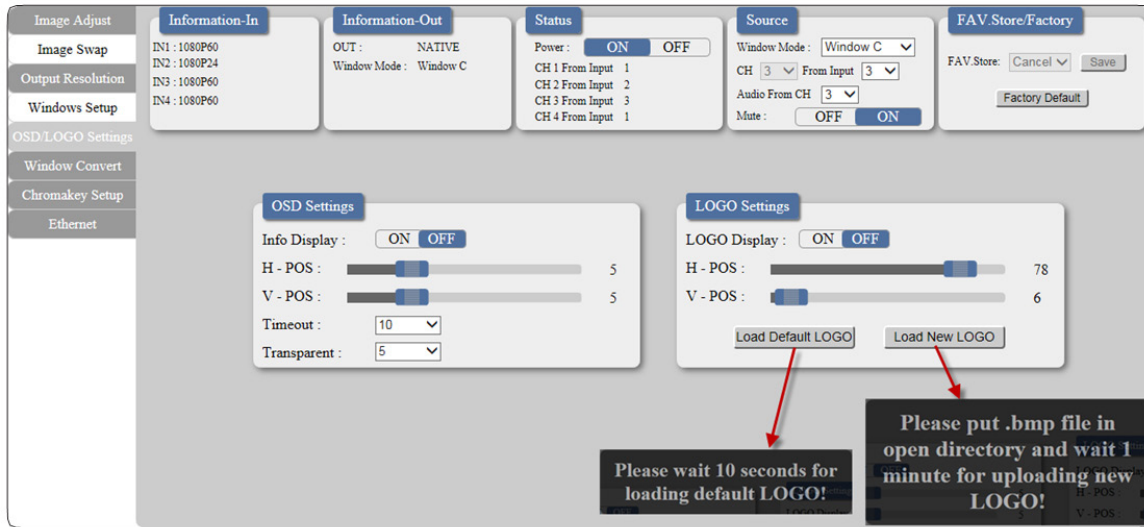


Clicking on the 'Windows Setup' tab to set the output display format.

**Note:** This function is only available under window E~H.

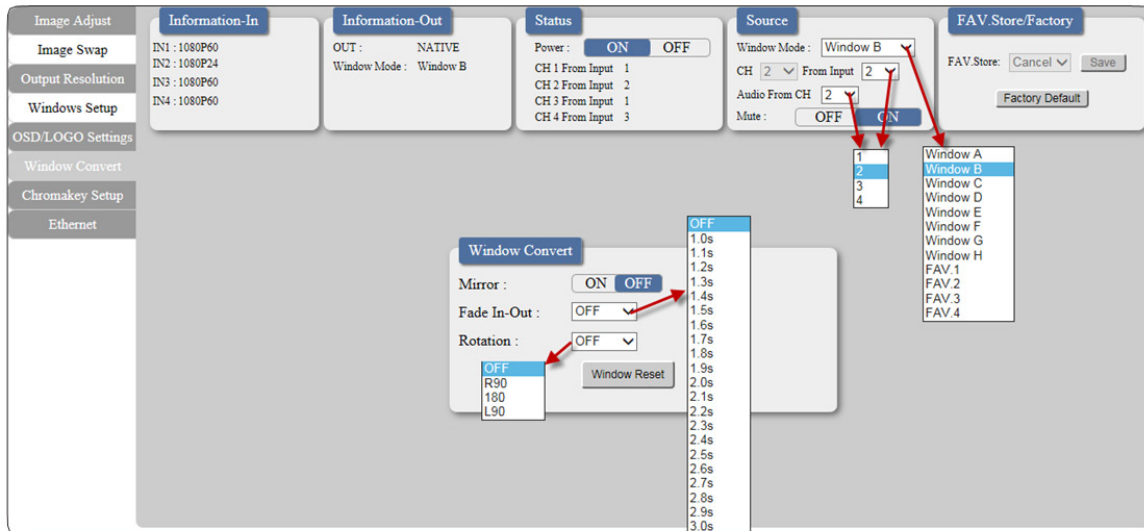


Clicking on the 'OSD/LOGO Settings' tab to set the OSD & LOGO's function and position. Load and upload logo can also be done under this page. Upload procedure please refers to the rear panel description of USB SERVICE ONLY port.



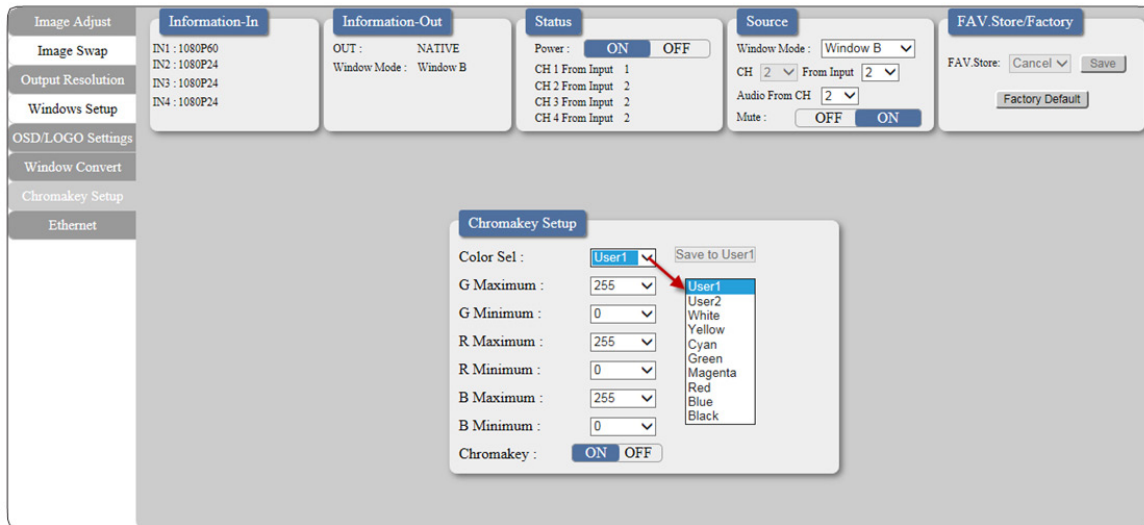
Clicking on the 'Window Convert' tab to set the output display angle.

**Note:** This function is only available under window A~D.

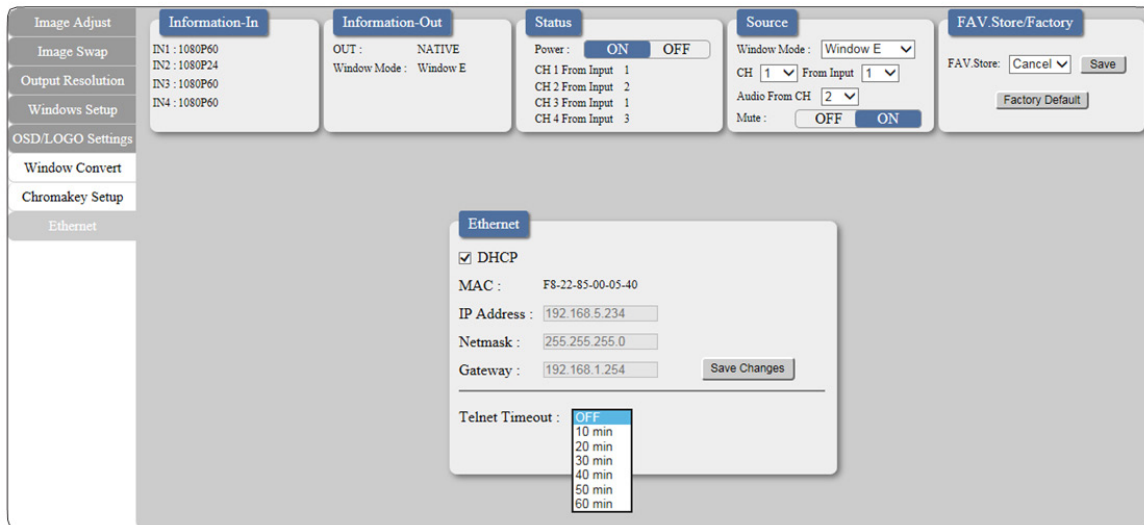


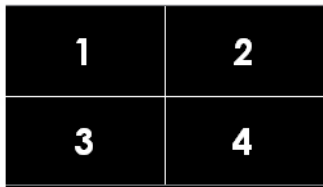
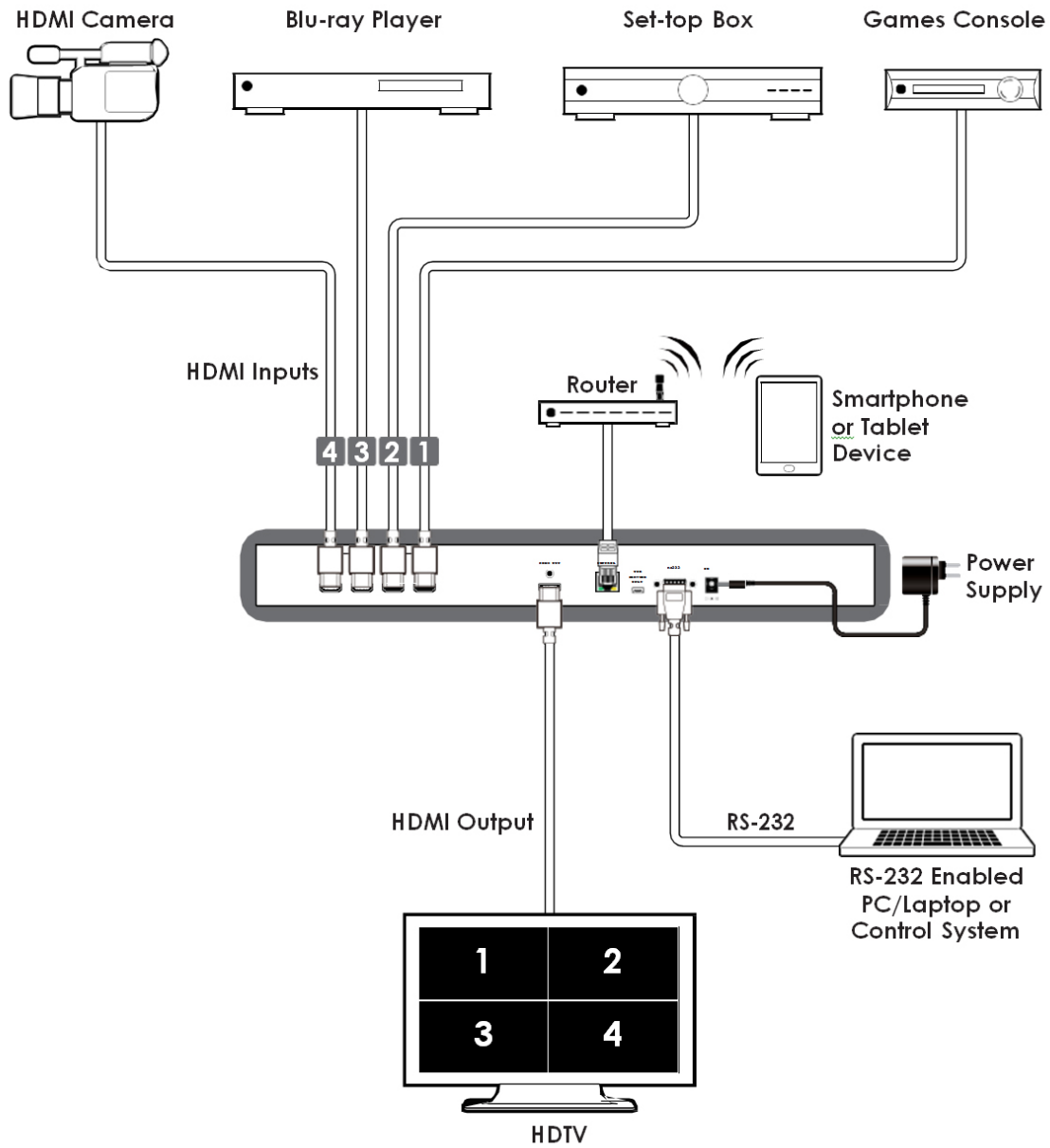
Clicking on the 'Chromakey Setup' tab to set the output display color.

**Note:** This function is only available under window A~D.

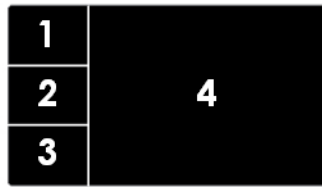


Clicking on the 'Ethernet' tab to reset the IP configuration. The system will ask for a reboot of the device every time when any of the settings are changed. The IP address needed to access the WebGUI control will also need to be changed accordingly on the web address entry bar.

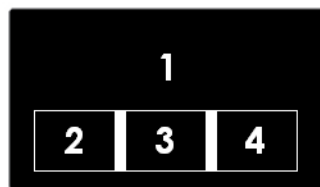




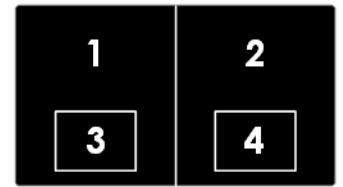
Window E (POP)



Window F (POP)



Window G (PIP)



Window H (POP)

THIS PAGE IS INTENTIONALLY LEFT BLANK.



PLEASE READ THE FOLLOWING TERMS AND CONDITIONS CAREFULLY BEFORE USING THIS HARDWARE, COMPONENTS AND SOFTWARE PROVIDED BY, THROUGH OR UNDER A-NeuVideo, INC (COLLECTIVELY, THE "PRODUCT"). By using installing or using the Product, you unconditionally signify your agreement to these Terms and Conditions. If you do not agree to these Terms and Conditions, do not use the Product and return the Product to A-NeuVideo, Inc. at the return address set forth on the Product's packing label at your expense. A-NeuVideo, Inc. may modify these Terms and Conditions at anytime, without notice to you.

#### **RESTRICTIONS ON USE OF THE PRODUCT**

It is your responsibility to read and understand the installation and operation instructions, both verbal and in writing, provided to you with respect to the Product. You are authorized to use the Product solely in connection with such instructions. Any use of the Product not in accordance with such instructions shall void any warranty pertaining to the Product. Any and all damages that may occur in the use of the Product that is not strictly in accordance with such instructions shall be borne by you and you agree to indemnify and hold harmless A-NeuVideo, Inc. from and against any such damage.

The Product is protected by certain intellectual property rights owned by or licensed to A-NeuVideo. Any intellectual property rights pertaining to the Product are licensed to you by A-NeuVideo, Inc. and/or its affiliates, including any manufacturers or distributors of the Product (collectively, "A-NeuVideo") for your personal use only, provided that you do not change or delete any proprietary notices that may be provided with respect to the Product.

The Product is sold to you and any use of any associated intellectual property is deemed to be licensed to you by A-NeuVideo for your personal use only. A-NeuVideo does not transfer either the title or the intellectual property rights to the Product and A-NeuVideo retains full and complete title to the intellectual property rights therein. All trademarks and logos are owned by A-NeuVideo or its licensors and providers of the Product, and you may not copy or use them in any manner without the prior written consent of A-NeuVideo, which consent may be withheld at the sole discretion of A-NeuVideo.

The functionality and usability of the Product is controlled by A-NeuVideo, Inc. from its offices within the State of Texas, United States of America. A-NeuVideo makes no representation that materials pertaining to the Product are appropriate or available for use in other locations other than the shipping address you provided with respect thereto. You are advised that the Product may be subject to U.S. export controls.

#### **DISCLAIMERS AND LIMITATION OF LIABILITY**

A-NeuVideo may change or modify the Product at any time, from time to time.

THE PRODUCT IS PROVIDED "AS IS" AND WITHOUT WARRANTIES OF ANY KIND EITHER EXPRESS OR IMPLIED. A-NEUVIDEO DOES NOT WARRANT OR MAKE ANY REPRESENTATIONS REGARDING THE USE OR THE RESULTS OF THE USE OF THE PRODUCT'S CORRECTNESS, ACCURACY, RELIABILITY, OR OTHERWISE.

A-NeuVideo has no duty or policy to update any information or statements pertaining to the Product and, therefore, such information or statements should not be relied upon as being current as of the date you use the Product. Moreover, any portion of the materials pertaining to the Product may include technical inaccuracies or typographical errors. Changes may be made from time to time without notice with respect to the Product.

TO THE FULLEST EXTENT PERMISSIBLE PURSUANT TO APPLICABLE LAW, A-NEUVIDEO DISCLAIMS ALL WARRANTIES, EXPRESS OR IMPLIED, INCLUDING, BUT NOT LIMITED TO IMPLIED WARRANTIES OF MERCHANTABILITY, FITNESS FOR A PARTICULAR PURPOSE AND NON-INFRINGEMENT. A-NEUVIDEO DOES NOT WARRANT THE ACCURACY, COMPLETENESS OR USEFULNESS OF ANY INFORMATION WITH RESPECT TO THE PRODUCT. A-NEUVIDEO DOES NOT WARRANT THAT THE FUNCTIONS PERTAINING TO THE PRODUCT WILL BE ERROR-FREE, THAT DEFECTS WITH RESPECT TO THE PRODUCT WILL BE CORRECTED, OR THAT THE MATERIALS PERTAINING THERETO ARE FREE OF DEFECTS OR OTHER HARMFUL COMPONENTS. A-NEUVIDEO WILL USE ITS REASONABLE EFFORTS TO CORRECT ANY DEFECTS IN THE PRODUCT UPON TIMELY WRITTEN NOTICE FROM YOU NOT TO EXCEED 10 BUSINESS DAYS AFTER RECEIPT BY YOU OF THE PRODUCT, BUT YOU (AND NOT A-NEUVIDEO) ASSUME THE ENTIRE COST OF ALL NECESSARY SERVICING, REPAIR AND CORRECTION THAT WAS CAUSED BY YOU UNLESS OTHERWISE AGREED TO IN A SEPARATE WRITING BY A-NEUVIDEO.

UNDER NO CIRCUMSTANCES, INCLUDING, BUT NOT LIMITED TO, NEGLIGENCE, SHALL A-NEUVIDEO BE LIABLE FOR ANY SPECIAL OR CONSEQUENTIAL DAMAGES THAT RESULT FROM THE USE OF, OR THE INABILITY TO USE THE PRODUCT IN ACCORDANCE WITH ITS SPECIFICATIONS, EVEN IF A-NEUVIDEO OR ITS REPRESENTATIVES HAVE BEEN ADVISED OF THE POSSIBILITY OF SUCH DAMAGES. IN NO EVENT SHALL A-NEUVIDEO'S TOTAL LIABILITY TO YOU FROM ALL DAMAGES, LOSSES, AND CAUSES OF ACTION (WHETHER IN CONTRACT, OR OTHERWISE) EXCEED THE AMOUNT YOU PAID TO A-NEUVIDEO, IF ANY, FOR THE PRODUCT.