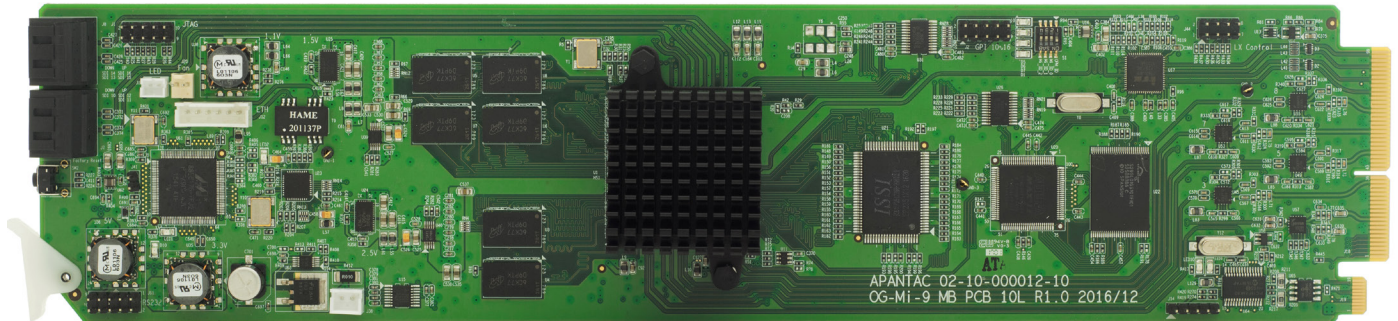


# openGear

## OG-Mi-16#

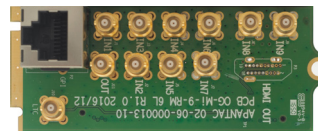
16 x 2 SDI Multiviewer Card with HDMI and SDI Output (dual outputs)



OG-Mi-9-MB

### Key Features

- openGear 3.0 card-based form factor
- Low latency - single frame processing delay
- 16 x auto-detect 3G (Level A/B)/HD/SD-SDI inputs
- Low power consumption - 20W
- Windows can be sized and moved freely
- Decode up to 16 embedded audio per SDI input
- Ethernet for configuration, dynamic labels and Tallies (TSL)
- Standalone labels, customizable logo
- 9 GPIs for tallies, count up/down trigger or preset recall
- Built-in analog/digital clocks can sync with LTC/NTP
- Borders can be turned on or off
- Two sets of safe area makers
- Visual alarm tags for video/audio alarm
- SDI outputs with embedded stereo audio pair
- 5 year limited warranty

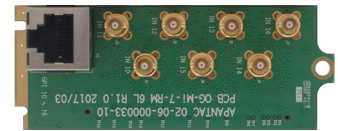


OG-Mi-9-MB (2 slots)

- 9 x HD-BNC input for SDI inputs
- 1 x HD-BNC output for SDI outputs
- 1 x RJ50 for GPI/Tally
- 1 x HDMI output
- 1 x HD-BNC for LTC input

#### Standard Accessories

- RJ50 to DB9 (for GPI)
- DB9 to Terminal Block (for GPI)



OG-Mi-7-RM (2 slots)

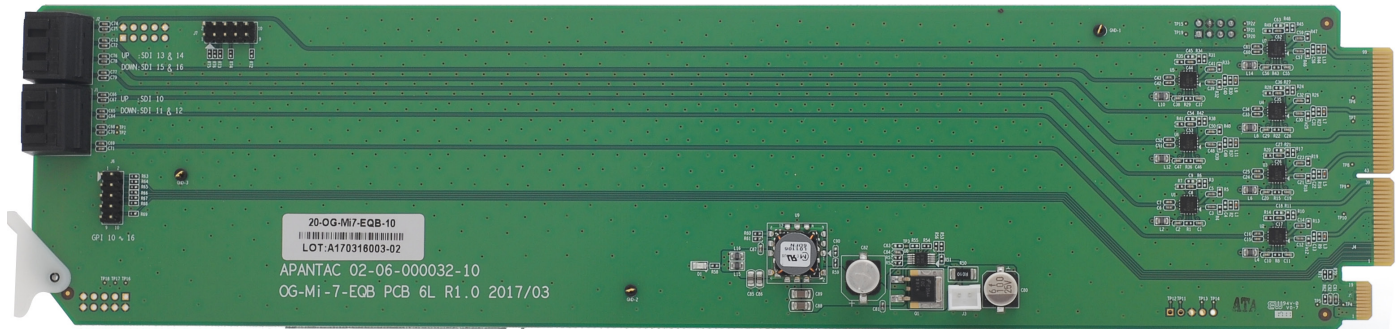
- 7 x HD-BNC input for SDI inputs
- 1 x RJ50 for GPI/Tally

#### Optional Accessories

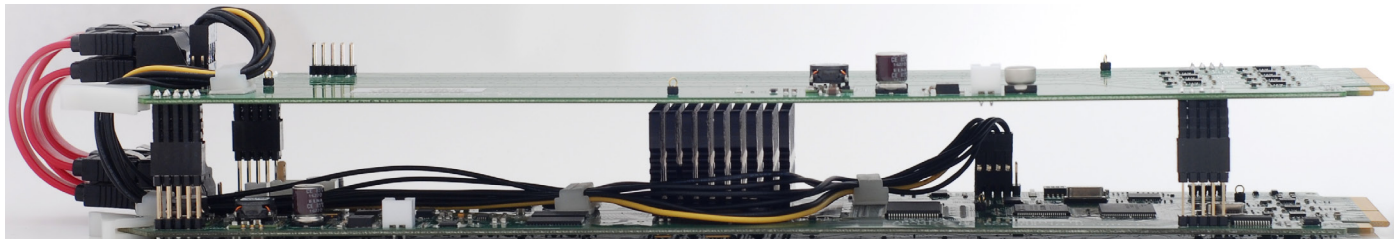
- RJ50 to DB9 (for GPI)
- 18 x HD-BNC to BNC cable

# OPENGEAR

## OG-Mi-16#



OG-Mi-7-MB



OG-Mi-16#-MB

### How to Order

#### OG-Mi-16#-SET-1:

OG-Mi-9-MB + OG-Mi-9-RM + OG-Mi-7-MB + OG-Mi-7-RM

#### OG-Mi-16#-SET-2:

OG-Mi-9-MB + OG-Mi-9-RM + OG-Mi-7-MB + OG-Mi-7-RM + 11 HD-BNC to BNC cable

## Specifications

<b>Inputs</b>	16x 3G (level A/B)/HD/SD-SDI	<b>Video Output</b>	1x SDI and 1 x HDMI
<b>Connector Type</b>	HD-BNC	<b>Audio Output</b>	Embedded HDMI and SDI
<b>Total Windows</b>	16	<b>Output Resolution</b>	1920x1080P 50/60Hz
<b>Serial Digital</b>	SMPTE 424M, 292M, 259M	<b>On Screen Display</b>	Borders, Labels, Tallies, Audio meters, Alarm tags, Safe area markers
<b>Equalization</b>	120m at 2.97 Gbps, 140m at 1.48 Gbps, 400m at 270 Mbps with Belden 1694A	<b>GPI</b>	9 inputs with RJ50 - DB9 connector
<b>Return Loss</b>	> 15db up to 1.485 Gbps > 10db up to 3G	<b>Serial Port</b>	N/A
<b>Embedded Audio</b>	SMPTE-272M-A	<b>IP</b>	100 Base-T, TSL, AXP_Lite protocol
<b>Alarms</b>	No audio, audio high/low, no video, video format display	<b>Electrical</b>	20 W