



## INSTALLATION AND OPERATION MANUAL

### EZ-VDA3B

#### Video Distribution Amplifier

Model numbers:  
EZ-VDA3B includes power supply with North American plug  
EZ-VDA3BX includes worldwide power supply (specify plug)



RDL EZ Series products provide the highest level of value to A/V professionals and A/V users who demand professional quality. For long-term performance, quality and value, you have made the EZ choice. EZ products are made in the USA by RDL, the inventor of application-specific modules bringing decades of experience as the world's leading manufacturer of high-reliability performance products to the A/V industry. Visit the RDL website for hundreds of professional A/V products made in the USA by RDL.



[www.rdlnet.com](http://www.rdlnet.com)

**Decades of Performance, Quality and Value**

RDL • 659 N. 6th Street • Prescott, AZ • USA 86301 • Sales: 800-281-2683 • 928-443-9391  
Tech Support: 800-933-1780 • 928-778-3554 • RDL Europe Sales & Support: (31) 20-6238-983

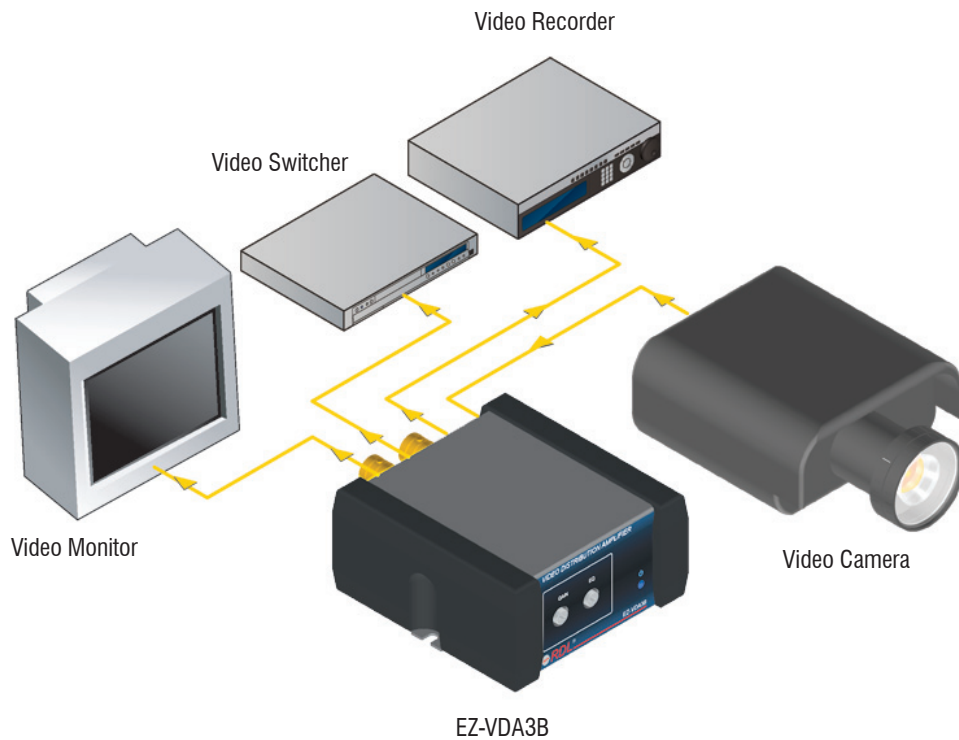
# EZ-VDA3B

## Video Distribution Amplifier

- Composite Input to Three Composite Outputs
- Front-Panel GAIN and EQ Trimmers
- Operation with NTSC or PAL Signals
- 75  $\Omega$  Terminated Input
- Input and Outputs on Gold-Plated BNC Jacks
- Wide Bandwidth > 400 MHz

The EZ-VDA3B is a composite video distribution amplifier with three outputs. The input and outputs are all 75  $\Omega$  on BNC connectors. If the outputs are connected to long coaxial cables (typically 100 to 1000 feet) the front-panel gain and equalization trimmers may be adjusted to restore picture clarity. The wide amplifier bandwidth supports high quality video distribution. The EZ-VDA3B is used in stores, houses of worship, restaurants, clubs, security and commercial A/V systems.

## TYPICAL APPLICATION



**GAIN ADJUSTMENT**

If long video cables are connected to the output jacks, turn the GAIN control clockwise until the picture brightness appears normal. If short output cables are connected, or if the picture brightness is normal, set the GAIN control fully counter-clockwise.

**EQUALIZATION ADJUSTMENT**

If long video cables are connected to the output jacks, turn the EQ control clockwise until the picture sharpness appears normal. If short output cables are connected, or if the picture clarity is normal, set the EQ control fully counter-clockwise.

**POWER INDICATOR**

Glows blue when the product is connected to a valid power source.



**24 VDC POWER INPUT**

Insert plug from power supply. Rotate 1/4 turn clockwise to lock.

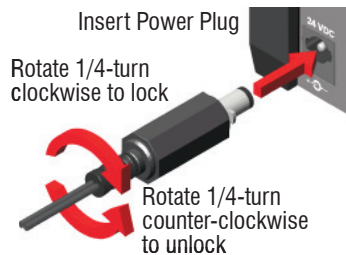
**VIDEO OUTPUTS**

Connect one, two or three cables to feed video signals to equipment with 75 ohm composite video inputs.

**VIDEO INPUT**

Connect a composite video source to the INPUT jack. The input jack terminates the source with 75 ohms.

**POWER CONNECTION**

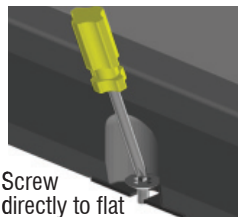


Insert Power Plug

Rotate 1/4-turn clockwise to lock

Rotate 1/4-turn counter-clockwise to unlock

**FIXED MOUNTING**



Screw directly to flat surface without installing rubber feet.

**RUBBER FEET ATTACHMENT**



Recess

Bottom View of chassis

Peel backing and stick the 4 rubber feet to chassis in recesses provided.

---

**SELECTED MOUNTING ACCESSORIES** Complete accessory listing available at: [rdlez.com](http://rdlez.com)

## EZ-RA6

**Rack Adapter** for 6 Increments of 1/6 Rack Width



## EZ-CC6

**Component Chassis** for 6 Increments of 1/6 Rack Width



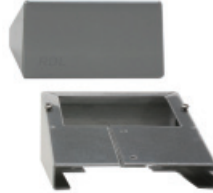
## EZ-SMB1

**Surface Mount Bezel** for 1/6 Rack Width Products



## EZ-DC1

**Desktop Chassis** 1/6 Rack Width



## EZ-UCB2

**Under-Counter Brackets** 1/6 or 1/3 Rack Width



## EZ-SD1

**Storage Drawer** 1/6 Rack Width

Use In Place of Filler Panel  
Holds Adapters and Cables  
Mounts in EZ-CC6 and EZ-RA6



---

## TYPICAL PERFORMANCE

Input: 75  $\Omega$  on BNC jack  
Input level: 1 V p-p nominal  
Gain: Unity to +6 dB (adjustable)  
Bandwidth: > 400 MHz  
Coupling: AC  
Differential Gain: < 0.1%  
Differential Phase: < 0.1 degree  
Equalization: Flat to +7 dB @ 50 MHz (adjustable)  
Residual Noise: < -90 dB (referenced to 1 V p-p)  
Outputs (3): 75  $\Omega$  source-terminated on BNC jacks, 1 V p-p nominal (terminated)  
24 Vdc power supply current: 20 mA (idle), 35 mA (max.)  
Power supply input voltage: 100 to 240 VAC  
Warranty: 3 Years; contact RDL technical support department for assistance  
Case dimensions: 2.9" (7.4 cm)W x 3" (7.6 cm)D  
Mounting size: 1/6 rack width

CE

891-1540