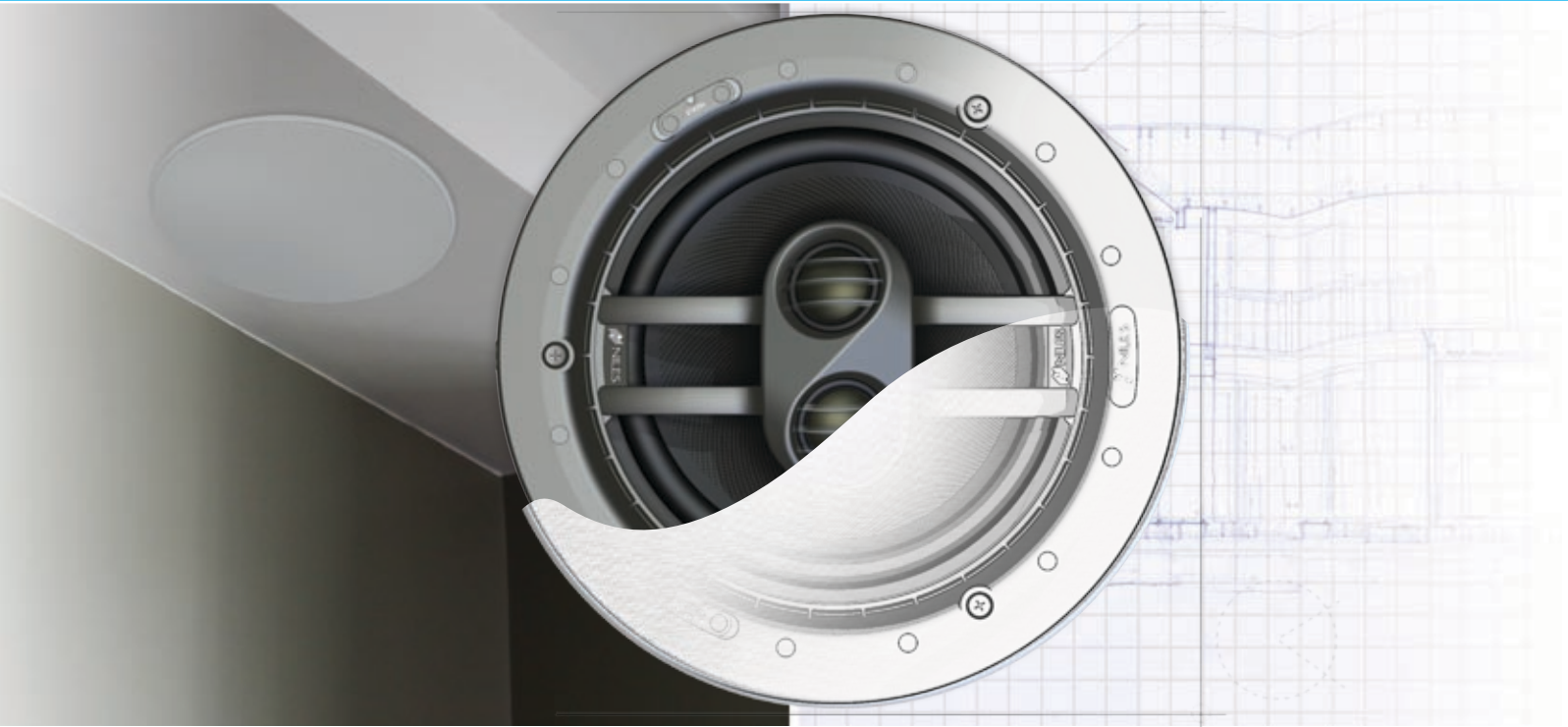




Designer Aesthetics
Audiophile Performance
Installation Ease

SURROUND EFFECTS LOUDSPEAKER SPECIFICATIONS SHEET



DS7FX

7" SURROUND EFFECTS
DIRECTED SOUNDFIELD LOUDSPEAKER



Surround Effects loudspeakers are optimal for rear/side surround sound in 5.1 and 7.1-channel home theater applications. The DS7FX is designed for use with Niles DS7HD, DS7PR, and DS7MP left/center/right loudspeakers. Glass fiber woofer cones and dual Teteron® tweeters on a multi-axis array provide ultra-realistic surround sound effects.

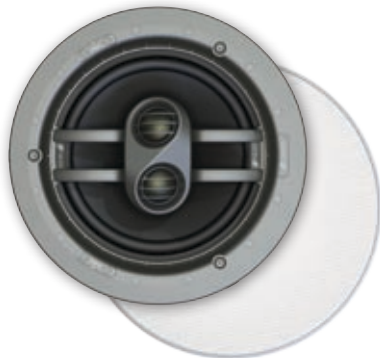
FEATURES AND BENEFITS

- **Designer Aesthetics** Magnetically attached MicroThin™ speaker grilles ensure a clean, virtually invisible appearance that blends with the room's aesthetics. Optional square grilles provide added design flexibility.
- **Superior Sound Quality** Patented Directed Soundfield™ technology directs the sound to the listening area for optimum sound quality. New patent-pending pivot mechanism adjusts smoothly and holds the loudspeaker woofer securely in position.
- **Installation Ease** Three patent-pending spring-tensioned mounting clamps permit quick installation and compensate for uneven mounting surfaces and varied environmental conditions. Weather-resistant construction enables installation in moist areas, such as bathrooms or outdoors under eaves.
- **Install With Confidence** The best-built loudspeakers deserve the best protection—the Niles Lifetime Limited Warranty.

DS7FX

7" Surround Effects Directed Soundfield™ Loudspeaker

For surround effects in multi-channel home theater applications



Packaged in Pairs with Round MicroThin™ Grilles

Stock Number

FG01618

FEATURES

- Patented Directed Soundfield technology* with new patent-pending pivot mechanism directs the sound to the optimum listening area
- 7" glass fiber woofer cone with curvilinear profile and extended pole for improved dynamics, smoother sound and less peaking at high frequencies
- Dual 1" fluid-cooled Teteron® dome tweeters provide ultra-wide dispersion and smooth high frequency response
- Multi-axis tweeter array positions the two tweeters on a different axis and at an opposing angle to create realistic surround sound effects
- Bipole/Dipole switch provides optimum room matching
- Magnetically attached, rust-resistant grille covers install quickly and provide a low profile look
- Integrated baffle/frame assembly increases the cone area for deeper bass than competitive speakers of the same diameter
- Patent-pending spring tensioned mounting clamps permit quick installation and compensate for uneven mounting surfaces and varied environmental conditions
- Weather-resistant construction enables installation in wet environments and outdoors under eaves
- Optional rear wave enclosure provides predictable sound performance and eliminates unwanted sound from bleeding into adjacent rooms or spaces

SPECIFICATIONS

- Recommended amplifier power: 10 - 140 watts
- Impedance: 8 ohm nominal; 6 ohm minimum
- Frequency response: 52 Hz to 21 kHz +/- -3 dB
- Voice coil size: 1-1/4"

DIMENSIONS

- Frame dimensions (with grille): 9-7/8" (25.15 cm) diameter
- Hole cutout dimensions: 8-1/2" (21.60 cm) diameter
- Depth behind ceiling (5/8" drywall): 5-5/16" (13.6 cm)

WARRANTY: Lifetime Limited

*US Patent 6,070,694



RELATED PRODUCTS	
	RWE7C Rear Wave Enclosure Stock Number: FG01643
	SG7C Square Loudspeaker Grille Stock Number: FG01645
	NCB7C New Construction Bracket Stock Number: FG01647



Directed Soundfield™ technology with a new patent-pending pivot mechanism directs the sound to ensure the best possible listening experience.



BLENDING HIGH FIDELITY AND ARCHITECTURE®



DS7HD
7" High Definition



DS7PR
7" Performance



DS7MP
7" Multi Purpose



DS7FX
7" Surround Effects



DS7SI
7" Stereo Input



DS8HD
8" High Definition



DS8PR
8" Performance



DS8FX
8" Surround Effects