



Gefentv

Ethernet Over Coax

GTV-ETH-2-COAX

User Manual

www.gefentv.com

1080P
PROGRESSIVE

HDMI
HIGH DEFINITION MULTIMEDIA INTERFACE

iDTV

HD DVD

Blu-ray Disc

ASKING FOR ASSISTANCE

Technical Support:

Telephone (818) 772-9100
(800) 545-6900

Fax (818) 772-9120

Technical Support Hours:

8:00 AM to 5:00 PM Monday thru Friday.

Write To:

Gefen Inc.
c/o Customer Service
20600 Nordhoff St
Chatsworth, CA 91311

www.gefentv.com
support@gefentv.com

Notice

Gefen Inc. reserves the right to make changes in the hardware, packaging and any accompanying documentation without prior written notice.

GefenTV Ethernet Over Coax is a trademark of Gefen Inc.

CONTENTS

- 1 Introduction**
- 2 Operation Notes**
- 3 Features**
- 4 Sender Panel Layout**
- 5 Sender Panel Descriptions**
- 6 Receiver Panel Layout**
- 7 Receiver Panel Descriptions**
- 8 GefenTV Ethernet Over Coax Software Installation**
- 11 Connecting The GefenTV Ethernet Over Coax**
- 17 Automatic Security Setup Feature**
- 19 Advanced Configuration**
- 24 Web Configuration**
- 27 Firmware Update Procedure**
- 28 Specifications**
- 29 Warranty**

INTRODUCTION

Congratulations on your purchase of the GefenTV Ethernet Over Coax. Your complete satisfaction is very important to us.

Gefen TV

Gefen TV is a unique product line catering to the growing needs for innovative home theater solutions. We specialize in total integration for your home theater, while also focusing on going above and beyond customer expectations to ensure you get the most from your hardware. We invite you to explore our distinct product line and hope you find your solutions. Don't see what you are looking for here? Please call us so we can better assist you with your particular needs.

The Gefen Ethernet Over Coax

The Gefen TV Ethernet Over Coaxial Sender and Receiver units send RJ-45 Ethernet over RG-59 or RG-6 Coax cable at a distance of up to 300m/1000 feet.

Ideal for legacy installations where Coaxial cable is already permanently in place, these devices breathe new life into remote network extensions where re-wiring is not possible.

How It Works

Connect your existing Ethernet network cables to the Ethernet Over Coaxial Sender unit, then plug in your Coaxial cable to the Coaxial jack on the Sender unit. At the other end of your Coaxial cable run, attach the Ethernet Over Coax Receiver unit and your network cables. Power-cycle your equipment. You will now receive Ethernet network signals at the end of your cable run as if you had cabled the run with Ethernet cables.

OPERATION NOTES

READ THESE NOTES BEFORE INSTALLING OR OPERATING THE GEFENTV ETHERNET OVER COAX

- This device passes all 10/100BASE-T Ethernet network protocols (TCP/IP, NETBUEI, Microsoft Networking, etc.) at speeds of up to 200Mbps (Full duplex fast Ethernet).
- All devices connected to the sending and receiving nodes must be on the same subnet with unique IP addresses to communicate properly.
- Multiple receiving nodes can be used on the same coaxial cable system to extend the network to multiple locations.

FEATURES

Features

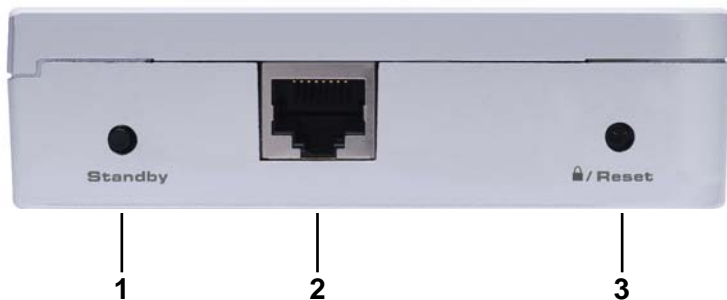
- Supports up to 200 Mbps data transmission rate
- Extension of up to 1000 feet (300 meters)
- Web configuration for easy maintenance
- Features include IGMP multicast, VLAN, and QOS packet management
- 3DES 168 bits encryption used for secure operation
- Four RJ-45 Ethernet ports

Package Includes

- (1) GefenTV Ethernet Over Coax sender
- (1) GefenTV Ethernet Over Coax receiver
- (1) 3 foot Ethernet Patch Cable
- (2) Power Adapter Cables

SENDER PANEL LAYOUT

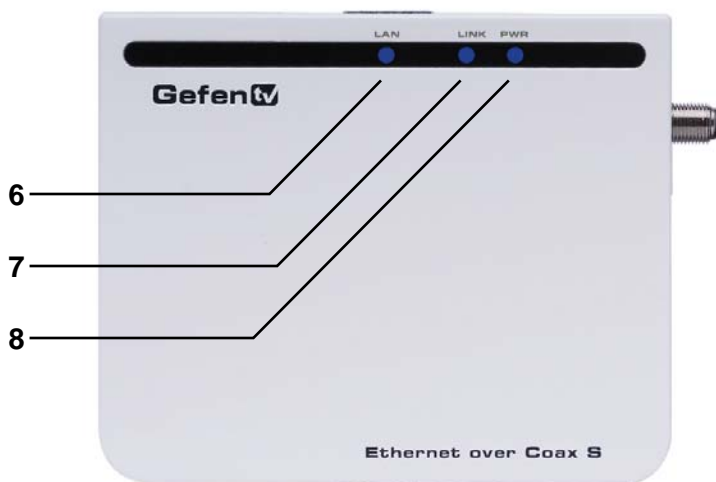
Front Panel



Back Panel



Top Panel



SENDER PANEL DESCRIPTIONS

1. Standby Button

Pressing this will put the sending unit in standby mode. The unit will not transfer any information to the receiving unit in this mode. To release standby mode, simply press the button again.

2. Ethernet Input Port

Connects to the Ethernet source (i.e a router, computer, or Internet connection) via a standard network cable.

3. Security/Reset Button

Pressing this button for 2 seconds will activate the Automatic Security Configuration (please see page 17). Pressing this button for more than 10 seconds will perform a factory reset.

4. AC Power Cable Input

Input for the supplied AC power cable.

5. Coaxial Output

Coaxial output to link the sending and receiving units together. This connector will support RG-6 and RG-59 cables.

6. LAN LED

This LED will activate when a connection to a valid Ethernet source is established. It will blink when activity is detected to signify that data is actively being trafficked to and from the receiver.

7. Link LED

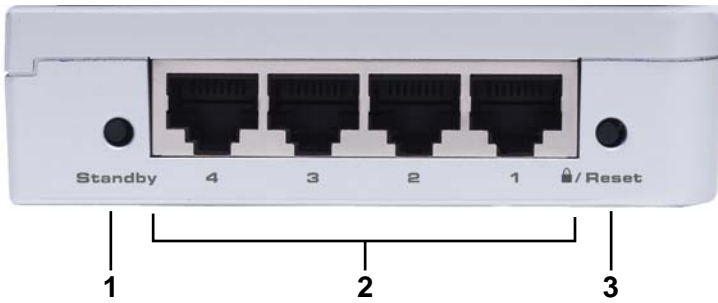
This LED will activate once a link has been established between the sending and receiving units. It will blink when activity is detected to signify that data is actively being trafficked.

8. Power LED

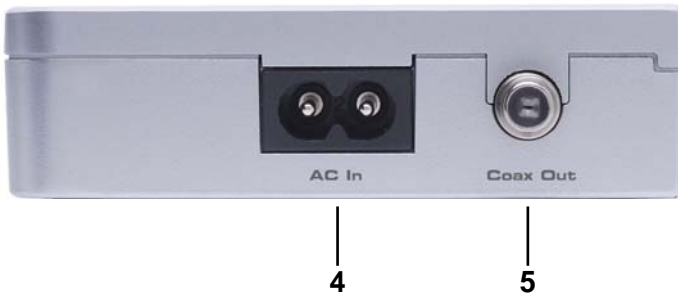
This LED will activate once the included power supply is properly connected.

RECEIVER PANEL LAYOUT

Front Panel



Back Panel



Top Panel



RECEIVER PANEL DESCRIPTIONS

1. Standby Button

Pressing this will put the receiving unit in standby mode. The unit will not transfer any information to the sending unit in this mode. To release standby mode, simply press the button again.

2. Ethernet Input Port (1 through 4)

Connects to an Ethernet device (i.e a computer or gaming system) via a standard network cable. 4 ports are available for 4 separate devices.

3. Security/Reset Button

Pressing this button for 2 seconds will activate the Automatic Security Configuration (please see page 17). Pressing this button for more than 10 seconds will perform a factory reset.

4. AC Power Cable Input

Input for the supplied AC power cable.

5. Coaxial Output

Coaxial output to link the sending and receiving units together. This connector will support RG-6 and RG-59 cables.

6. LAN 1 LED

This LED will activate when a connection from a valid Ethernet device to Ethernet port 1 is established. It will blink when activity is detected to signify that data is actively being trafficked to and from this port.

7. LAN 2 LED

This LED will activate when a connection from a valid Ethernet device to Ethernet port 2 is established. It will blink when activity is detected to signify that data is actively being trafficked to and from this port.

8. LAN 3 LED

This LED will activate when a connection from a valid Ethernet device to Ethernet port 3 is established. It will blink when activity is detected to signify that data is actively being trafficked to and from this port.

9. LAN 4 LED

This LED will activate when a connection from a valid Ethernet device to Ethernet port 4 is established. It will blink when activity is detected to signify that data is actively being trafficked to and from this port.

10. Link LED

This LED will activate once a link has been established between the sending and receiving units. It will blink when activity is detected to signify that data is actively being trafficked to and from the sender.

11. Power LED

This LED will activate once the included power supply is properly connected.

GEFENTV ETHERNET OVER COAX SOFTWARE INSTALLATION

How to Connect the GefenTV Ethernet Over Coax

Installation of the GefenTV Configuration Assistant

1. Insert the included installation CD-ROM into your computer that will be used to configure the GefenTV Ethernet Over Coax.
2. The auto run will begin the installation process. If auto run does not start or auto run has been disabled, please navigate to "X:\:" drive (where X is the drive letter or your CD-ROM drive) and run the "autorun.exe" file.
3. Click on the Install Utility option.



4. Choose your preferred language and click on the OK button to continue. (Currently English is the only selectable language)

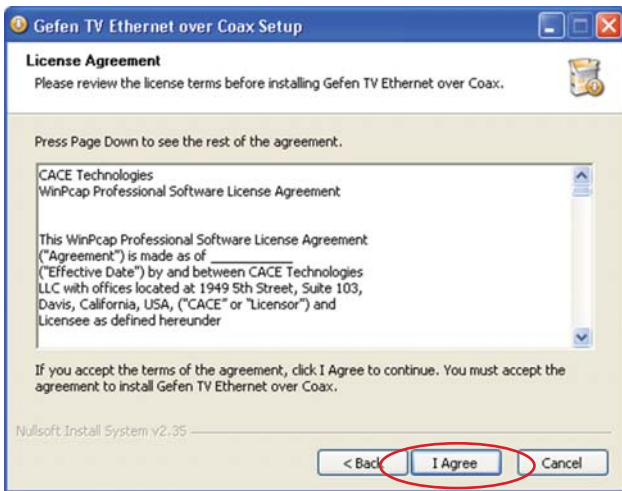


GEFENTV ETHERNET OVER COAX SOFTWARE INSTALLATION

5. Close all other applications and press the Next button to continue.

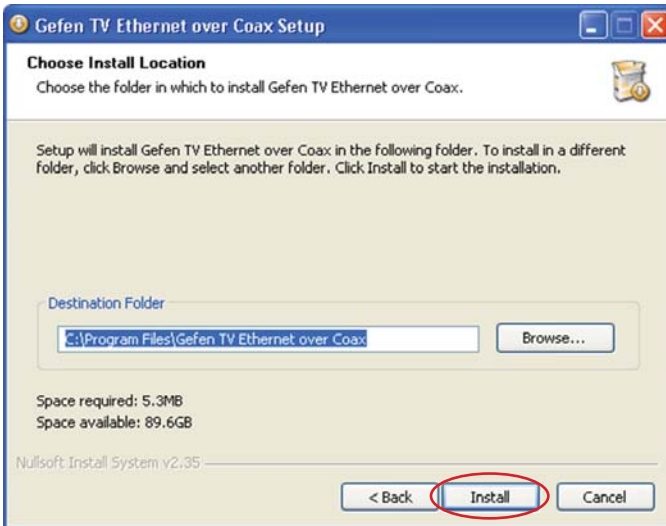


6. Please read the license agreement and click on the I Agree button to continue.



GEFENTV ETHERNET OVER COAX SOFTWARE INSTALLATION

7. Please choose the program installation destination. The default location is "C:\Program Files\Gefen TV Ethernet Over Coax". To set your own destination, click on the browse button and navigate to your preferred location. Click the install button to continue.



8. The program files will copy to the specified location in the previous step. When the process is complete, you will see the window below. Click on the finish button to complete the software installation process.



CONNECTING THE GEFENTV ETHERNET OVER COAX

1. Connect the source (i.e. computer, router, switch) to the GefenTV Ethernet Over Coax sender unit using the supplied CAT-5e cable.
2. Connect the GefenTV Ethernet Over Coax sender unit to a coaxial (RG-59 or RG-6) cable system. Please ensure that the connected coaxial cable system has an available endpoint, either directly or through a coaxial cable splitter.
3. Connect the GefenTV Ethernet Over Coax receiver unit to the coaxial cable system.
4. Connect the Ethernet devices (i.e. computer, game system, set-top box) to the GefenTV Ethernet Over Coax receiver unit. Up to four devices are supported.
5. Connect the included power cables to both the GefenTV Ethernet Over Coax sending and receiving units.

POWER LED: Once the power cable is connected, the Power LED should become active with a solid blue color.

LAN LED: When a valid Ethernet connection is detected on the sending and receiving Ethernet jacks, their corresponding LED's will become active and should emit a solid blue color.

LINK LED: The Link LED should be flashing red on initial boot up. Once a link between the sending and receiving units has been established, it will emit a solid blue color on both units.

IMPORTANT: The Link LED must be emitting a solid blue color before configuration can continue. If this LED continues to flash red on both the sending and receiving units, it is possible that they are not physically connected within the current coaxial cable system. Please confirm that both the sending and receiving units are attached to the same coaxial cable system.

CONFIGURING THE GEFENTV ETHERNET OVER COAX

Once both the sending and receiving units are linked and powered, basic configuration can proceed. This section of the manual refers to the sending unit as the LOCAL NODE, and the receiving unit as the REMOTE NODE.

NOTE: The following steps are for manual configuration of the nodes for a basic secure network. These steps are optional, as the nodes will function with their default settings. However, for security and performance purposes, it is recommended that the following steps be performed. Automatic configuration is also possible using the Automatic Security Configuration feature on page 17 in lieu of the procedure outlined in this section.

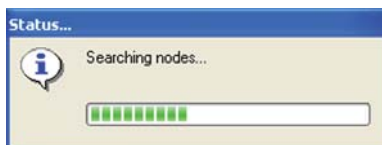
1. Ensure that both the local and remote nodes are powered and are properly linked.
2. Confirm that the computer with the installed GefenTV Ethernet Over Coax software is connected to the local node.
3. Start the **Gefen TV Config Tool** from this location:

Start Menu \ All Programs \ GefenTV Ethernet Over Coax \ Gefen TV Config Tool

4. The introduction screen should appear as the image below. Click on the next button to continue.

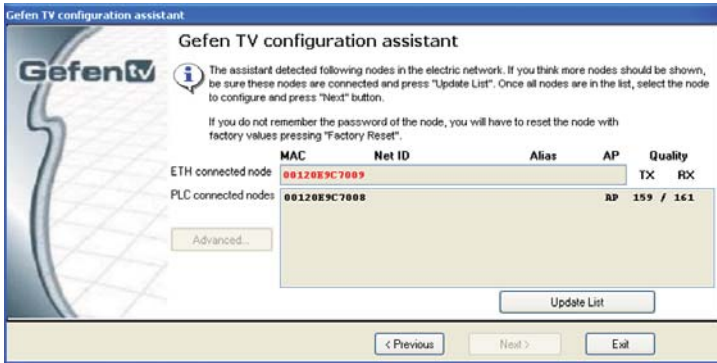


5. The program will begin to search for all connected nodes.



CONFIGURING THE GEFENTV ETHERNET OVER COAX

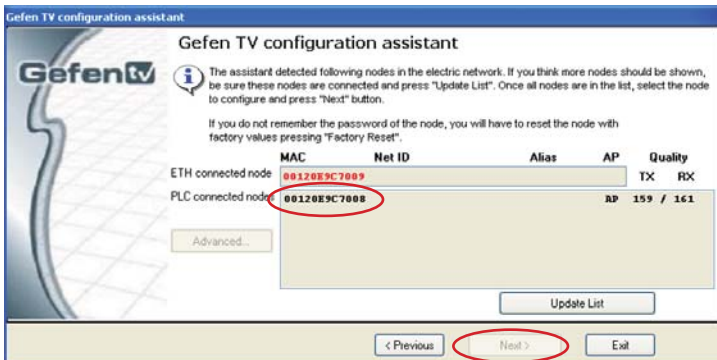
- Once all possible nodes have been detected, the program will display all of these nodes as in the window below.



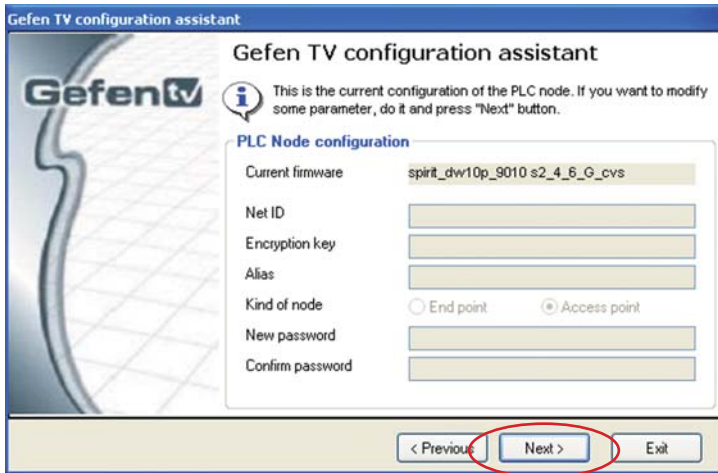
The local node that the computer is connected to will appear as the "ETH connected node". All remote nodes will be listed as "PLC connected nodes".

NOTE: Both the local and remote nodes must use the same Net ID and encryption passwords for proper operation. These will be configured in the next step. However, it is important to configure the remote nodes first. If the local node is configured first, all remote nodes will become inaccessible and will have to be removed from their locations and physically connected to the computer, where they can be configured to match the local node's settings.

- To begin configuration, click on the mac address of the remote node (PLC connected node) and then click on the next button.



8.



The PLC node configuration screen is separated into the following items:

NET ID

This is the name of the network. This name must be the same for both the local and remote nodes for proper operation. The NET ID can be an ASCII string up to 20 characters long.

ENCRYPTION KEY

This is the password needed for network authentication by all nodes. If you wish to set an encryption key, please set the NET ID first. The password can be an ASCII string up to 24 characters long.

ALIAS

This name is for easy identification of the node. This can be an ASCII string of up to 10 characters long. This field is optional.

NEW PASSWORD (CONFIGURATION PASSWORD)

This is to set the configuration password. If a new password is set here, the configuration tool will ask for it every time you access the node. The default password is "paterna". This field is optional.

CONFIRM PASSWORD

The password entered into the new password listing above must also be entered here. This is for confirmation purposes.

Enter the Net ID, encryption key, and alias into the corresponding fields. Once these fields are completed, click on the next button to continue.

CONFIGURING THE GEFENTV ETHERNET OVER COAX

- Once the update is complete, a message will appear to indicate the update was successful. Click on the ok button to continue.



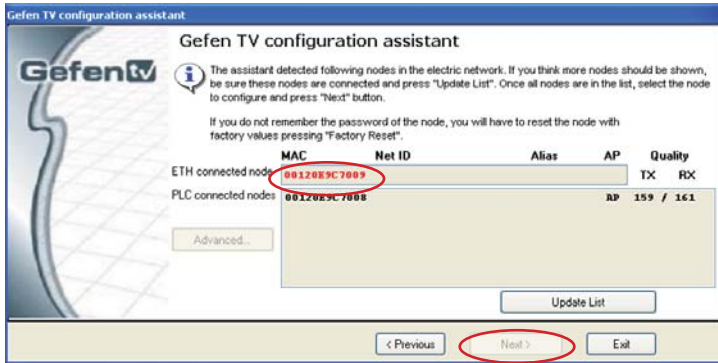
- Once the update to the remote node is complete, you will be presented with a window that will give the option to either return to the main configuration window or continue with advanced configuration.



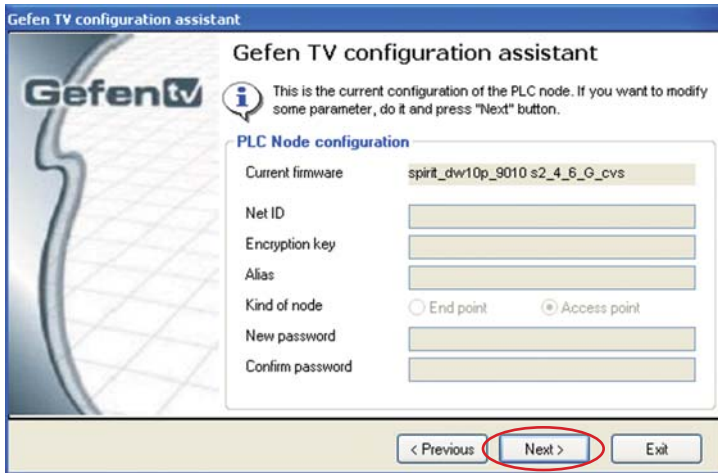
For basic usage, it will not be necessary to continue to the advanced configuration. For advanced options, please see the **ADVANCED CONFIGURATION** section on page 19. To continue with the basic configuration, click on the next button.

CONFIGURING THE GEFENTV ETHERNET OVER COAX

11. Once the configuration for the remote node is complete, the local node will then have to be configured. Click on the local node which is labeled as the "ETH connected node" and press next to continue.



12. Using the same Net ID and encryption key from the remote node, input the same information into the corresponding fields for the local node. The Alias field should be set to a different name as the remote node for easy identification.



Once the information has been input, click on the next button to continue. A confirmation window will appear once the update is complete. The same window in step 10 will appear with the option to continue with the advanced configuration. It is not necessary to continue with the advanced configuration for basic operation. Click on the next button to return to the main configuration window and exit the configuration tool by clicking on the exit button.

AUTOMATIC SECURITY CONFIGURATION FEATURE

To quickly setup the Gefen TV Ethernet Over Coaxial for secure use, the Automatic Security Configuration Mode (ASCM) can be activated on each node. Follow the below steps to automatically setup a secure connection between multiple nodes.

It is important to understand these concepts before proceeding with the Automatic Security Configuration.

- **Master Node (Fixed Access Point)** - The Master node is the unit that all of the Slave nodes use to copy the Net ID and Encryption Key from. Because all of the nodes on a network need to have the same Net ID and encryption key to operate properly together, there needs to be a single Master node that stores the information that all other Slave nodes will use to properly configure themselves. A Master node is indicated by its Power LED glowing a solid RED color. It is recommended to have only one Master node on the coaxial network.
- **Slave Node (Normal)** - A node in this mode will be indicated by its Power LED glowing a solid Blue color. Multiple Slave nodes can be on the same coaxial network.
- **Automatic Security Configuration Mode (ASCM)** - This mode is initialized by pressing and holding the Security/Reset button on the front panel for approximately 2 seconds. Once the node's Power LED begins flashing RED, release the button. This mode lasts for approximately 30 seconds and will return to normal operation after this time period.
- Both the Master and Slave nodes must be in ASCM for the automatic procedure to complete successfully.
- When a Slave node initializes ASCM, it will first attempt to find a Master node in ASCM. If a Master node in ASCM is not found, it will assume the role of the Master node. To avoid accidentally setting a Slave node as a Master node, make sure that the Master node is in ASCM when activating a Slave's ASCM.
- Any Slave node that assumes the role of a Master node will automatically have a random ASCII Net ID and Encryption Key generated.
- Connect the computer with the installed Gefen TV Config Tool software to the node that you wish to initially set as the Master node.
- If a node is connected to media server or router, it is recommended that this node be set as the Master node for increased performance.

Please refer to the next page for step by step instructions on how to activate the Automatic Security Configuration feature for the Gefen TV Ethernet Over Coax nodes.

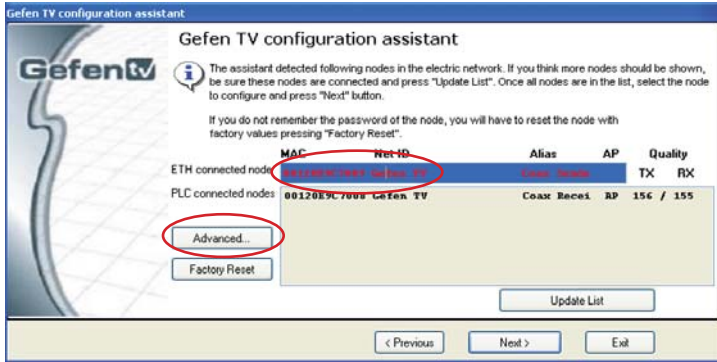
AUTOMATIC SECURITY CONFIGURATION

1. Connect the computer with the installed Gefen TV software to the node you wish to set as the Master node.
2. Press and hold the Security/Reset button on the node (ASCM), located on the front panel, for approximately 2 seconds. The Power LED should begin to flash RED, then release the button.
3. After approximately 30 seconds, the Power LED should stop flashing and glow solid RED. This indicates that it is now a Master node. If this node was a Slave node (normal node) before this process, it will now have a randomly generated ASCII Net ID and Encryption Key set.
4. Open the Gefen TV Config Tool (page 12). There should be a random ASCII value as the Net ID. If you wish to use this Net ID for the other Slave nodes, proceed to step 5. Otherwise, you can now set your own Net ID and encryption password which will be applied to all of the Slave nodes in the next step. To do this, click on the local "ETH connected node" MAC address and press the next button. Change only the Net ID and encryption password fields and click on the next button. Once the local node has been updated, proceed to step 5.
5. For this step to complete successfully, both the Master and Slave nodes have to be in ASCM. To do this, press and hold the Security/Reset button on the Master node for approximately 2 seconds. The Power LED should begin flashing RED. Within 30 seconds, press and hold the Security/Reset button on the Slave node(s) for 2 seconds to enter ASCM. The Slave node's Power LED should also begin to flash while it receives the Net ID and Encryption Key information from the Master node. Once the Power LED on both the Master and Slave nodes stop flashing and glow solid, the setup will be complete. Check this by opening the Gefen TV Config Tool and seeing that all nodes have the same Net ID.

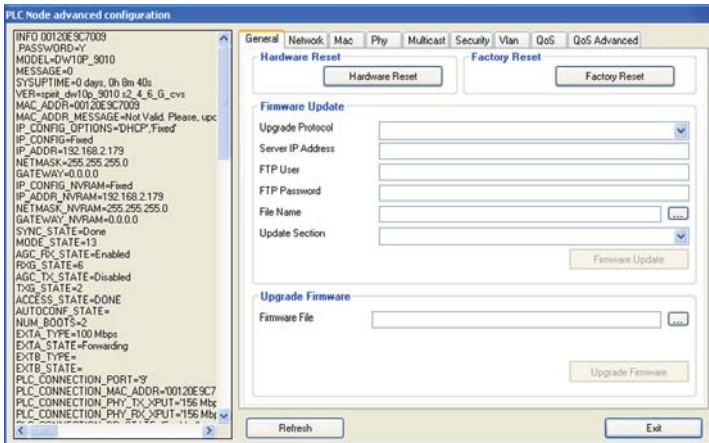
NOTE: If the Slave nodes are located at a great distance from the Master node, it is recommended that Step 5 be repeated for each Slave node separately. The window that each device remains in ASCM is only 30 seconds, and it may not be possible to put all Slave nodes in the ASCM within the time frame. It is also possible to temporarily relocate the Slave nodes to a coaxial port closer to the Master node for this configuration process, and then move them to their permanent location after this process is complete. If a Slave node is accidentally set as a Master node, you can hard reset the node by pressing and holding the Security/Reset button for approximately 10 seconds. This will revert the node to a Slave node and reset all internal configurations to factory settings.

ADVANCED CONFIGURATION

There are optional advanced settings that can be configured for each node. The advanced menu can be accessed directly through the main configuration page. Click on the MAC address of the node you wish to configure and click on the advanced button to the left of the node listing.



GENERAL



Hardware Reset

This will reboot the node. Settings made in this menu will be applied once the node is restarted.

Factory Reset

This will return the node to factory default settings. A password is required to complete this operation. The default password is "betera". This has the same effect as pressing and holding the Security/Reset button on the front panel for approximately 10 seconds.

ADVANCED CONFIGURATION

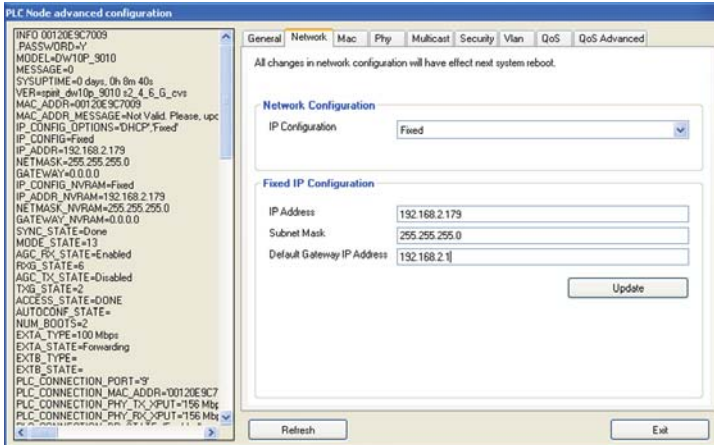
Firmware Update

This section is used to update the node's firmware from a server location. Please see the Firmware Update section on page 27 for full details.

Upgrade Firmware

This section is used to update the node's firmware from a file. Please see the Firmware Update section on page 27 for full details.

NETWORK



IP Configuration

For access to the node's web configuration tool an IP address must be assigned.

Options are:

Fixed - Manually assigned IP address

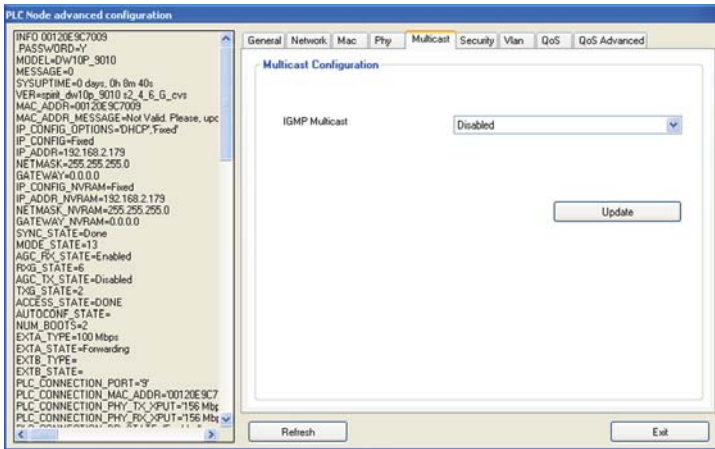
DHCP - IP assigned by the networks DHCP server

Fixed IP Configuration

Assign an IP address, subnet mask, and default gateway for web tool access.

Click on the Update button to apply settings made in this tab.

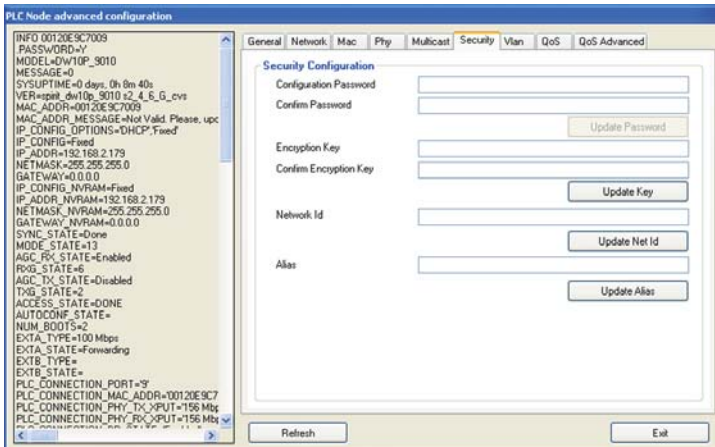
MULTICAST



IGMP Multicast

This option will enable or disable the node's ability to transmit IGMP multicast data.

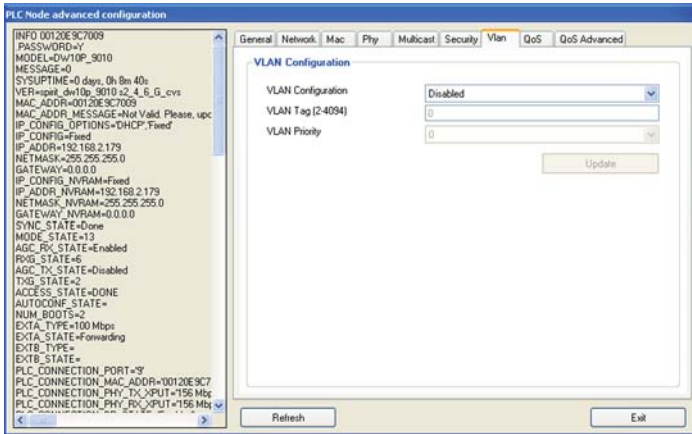
SECURITY



The security tab will allow the user to adjust the configuration password, the encryption password, the network ID, and the alias for the node. For a detailed description of each of these options, please see page 14.

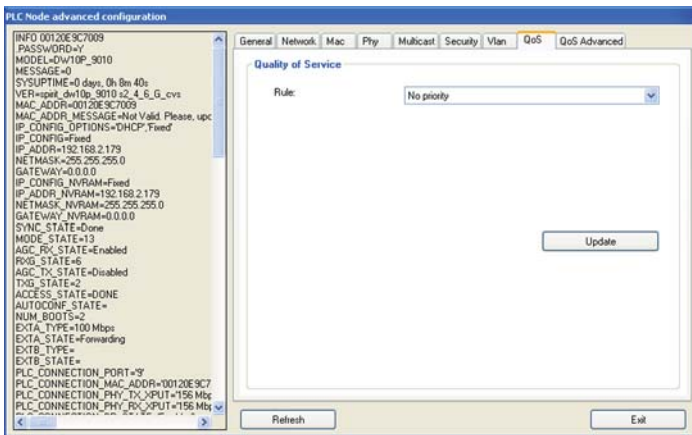
ADVANCED CONFIGURATION

VLAN



This option will enable or disable the node's ability to accept VLAN data. If this feature is enabled on one of the nodes, it must be set on all other for VLAN tag packets to pass.

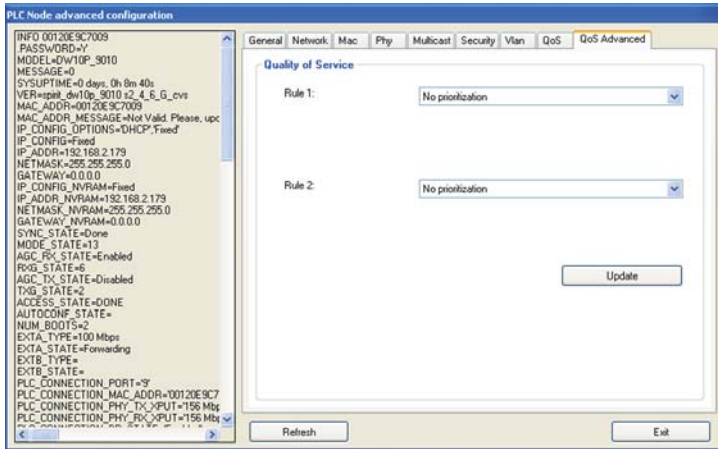
QOS



QOS (quality of service) is supported for managing traffic between nodes. The supported protocols are:

1. TCP port priority
2. UDP port priority
3. 802.1p
4. TOS (RFC 1122)
5. DSCP (RFC 2475)
6. No Priority

ADVANCED QOS



QOS (quality of service) prioritization. Rule 1 will be applied to all packets first and then Rule 2. Prioritization protocols are:

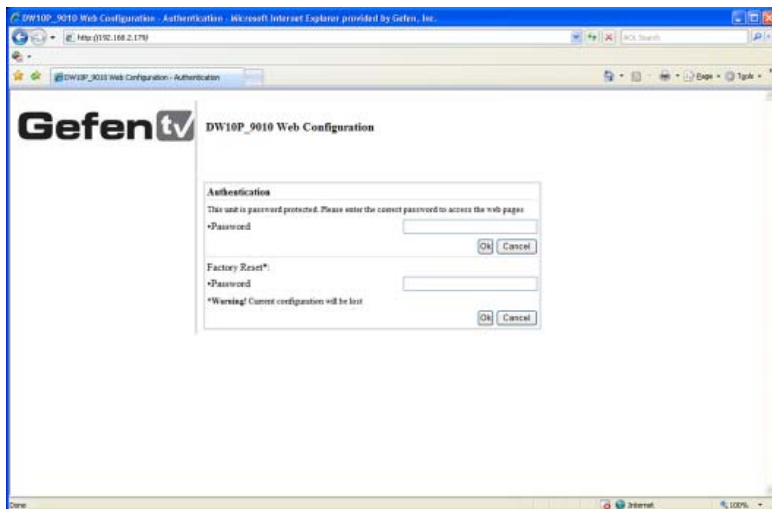
1. UDP is high priority, TCP is low priority
2. TCP is high priority, UDP is low priority
3. UDP port XXXX is high priority, the rest is low priority
4. UDP port XXXX is low priority, the rest is high priority
5. TCP port XXXX is high priority, the rest is low priority
6. TCP port XXXX is low priority, the rest is high priority
7. Use 802.1p prioritization
8. No prioritization

WEB CONFIGURATION

If an IP address has been set in the **ADVANCE CONFIGURATION PANEL**, access to the **WEB UTILITY** will be enabled. To access the **WEB UTILITY**, open your web browser and type the ip address into the address field. The IP address is dependant on the IP Configuration Setting assigned on page 20. The IP address can either be assigned by the DHCP server or a static IP address can be manually assigned.

AUTHENTICATION

The browser should open the authentication page displayed below.



Authentication

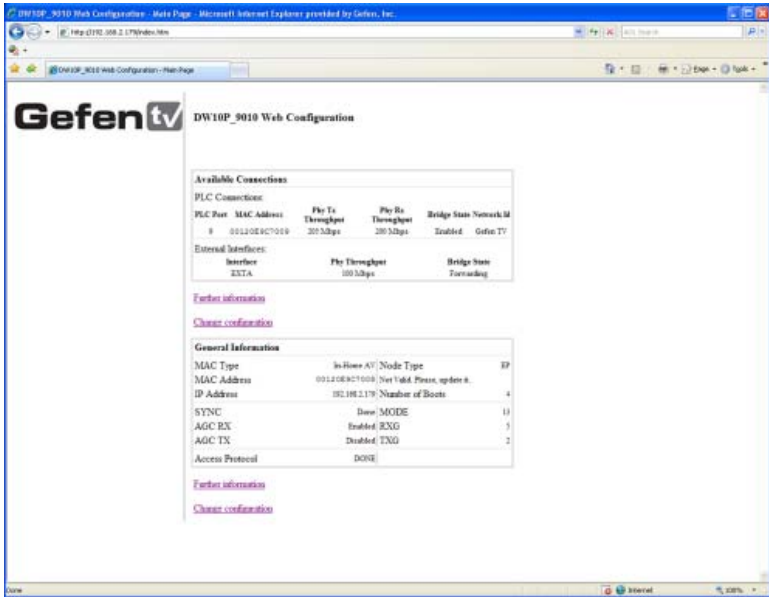
To enter the **WEB UTILITY**, enter the configuration password. The default password is “paterna” unless modified during the setup stage on page 14.

Factory Reset

The unit can be reset to factory settings from this menu. Enter the factory reset password. The default password is “betera”.

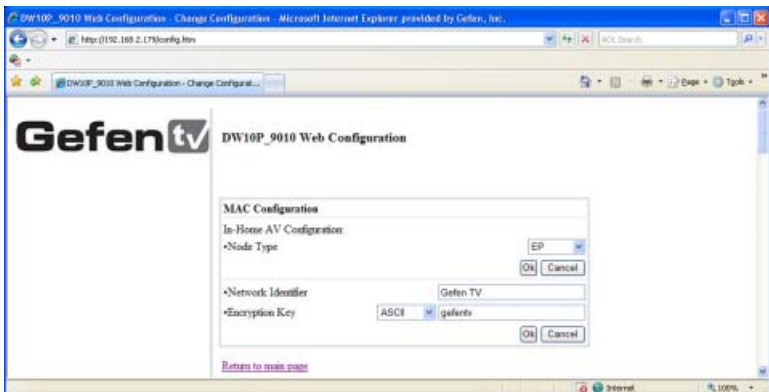
WEB CONFIGURATION

MAIN PAGE



The main page will display general configuration information. Clicking on the further information link will navigate to a new page with all the current configuration information (see page 26). Clicking on the change configuration link will navigate to a new page where all configuration options will be available for adjustment (see below).

WEB CONFIGURATION



This page will allow the user to adjust all options that are available just as in the **ADVANCED CONFIGURATION PANEL** in the **GEFENTV CONFIG TOOL**.

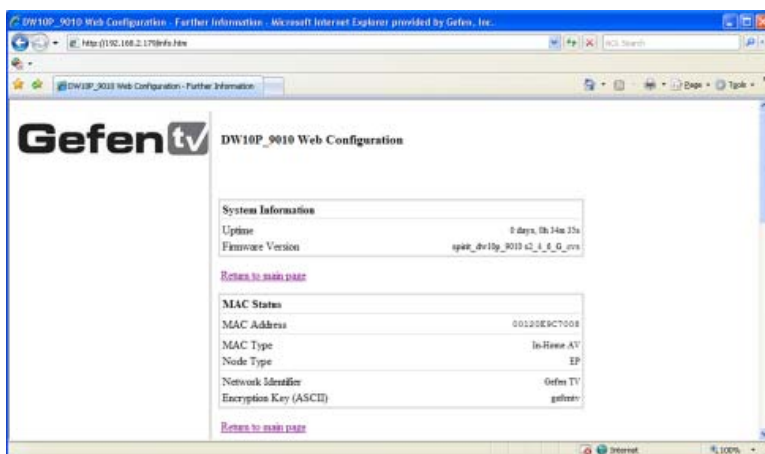
WEB CONFIGURATION

The configuration options are as follows:

- MAC Configuration
- Network Configuration
- Multicast Configuration
- VLAN Configuration
- Priority Configuration (QOS)
- Security Configuration
- Hardware Reset
- Flash Upgrade

Please refer to the **ADVANCED CONFIGURATION** section, starting on page 19, for information on the above categories. Going back to the main page can be done by clicking on any of the [Return to main page](#) links.

FURTHER INFORMATION



This page will display all of the information and status of the current node. The following sections are listed:

- System Information
- MAC Status
- Network Status
- PHY Status
- Multicast Status
- VLAN Status
- Priority Status
- Security Status

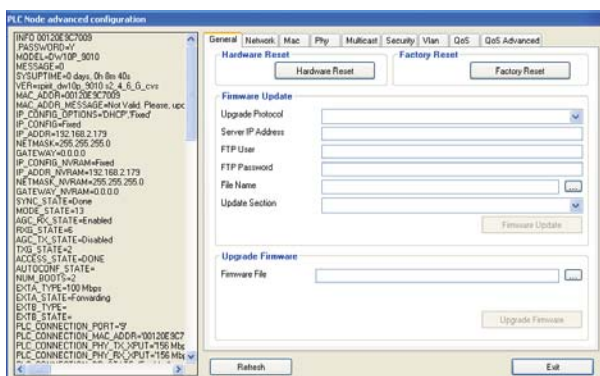
Information on this page is not configurable. If you wish to make adjustments to any of these categories, return to the main menu by clicking on any of the [Return to main page](#) links on the page. Then click on the [Change configuration](#) link which is also available on the main page.

FIRMWARE UPDATE PROCEDURE

The firmware for the GefenTV Ethernet Over Coax can be updated by FTP, TFTP, or a direct file. The firmware update can be executed from either the **ADVANCED CONFIGURATION PANEL**, or the **WEB UTILITY**.

UPDATE VIA THE ADVANCED CONFIGURATION PANEL

Firmware updates can be accomplished from the General tab in the **ADVANCED CONFIGURATION PANEL**. See page 19 for instructions on how to enter the **ADVANCED CONFIGURATION PANEL**.



Upgrade Via FTP or TFTP

1. Select the update protocol. Either FTP or TFTP
2. Enter the server IP address
3. Enter the user name and password
4. Enter the name of the file (if the file is not in the root directory of the TFTP or FTP directory, you have to write the whole route from root server directory)
5. Select which section you would like to update (Firmware, Loader or Factory Settings)
6. Click on the firmware update button

Upgrade Via File

1. Use the browse button to the right of the firmware file window and select the firmware update file. You can also manually type the full path to the firmware file
2. Click on the upgrade firmware button

NOTE: This procedure is the same using the web utility. The web update section is located in the change configuration settings, which is accessible from the main page.

SPECIFICATIONS

Standard Support	UPA DHS (200 Mbps) PLC
Interface	One Power Line port / One coaxial port / 4 Ethernet 10/100M Ports
Security	3DES 168 bits encryption
Power	AC 100~240V / 50~60Hz / 0.15A
Power Consumption	8W/230V Max & 7W/110V Max
Operating Temp	0~40°C (32~104°F)
Operating Humidity	10%~90% non-condensing
Storage Temp Range	-20~70°C (-4~158°F)
Storage Humidity	5%~95% non-condensing
Storage Altitude	Sea level to 40,000 feet
Certifications	FCC Part 15, Part B, Class B, CE Class B