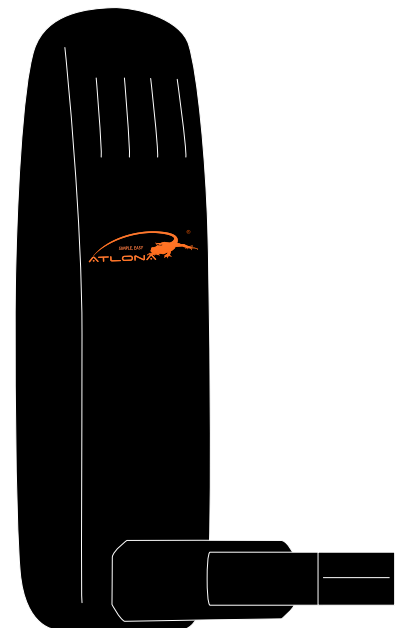




**ATLONA**  
**PC TO COMPUTER MONITOR/HDTV**  
**WIRELESS ADAPTER**  
**AT-HDAIR**

**USER MANUAL**



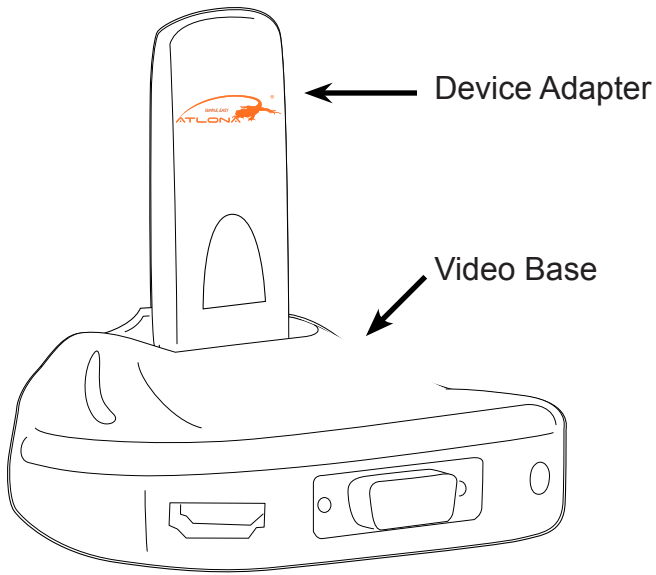
**NOTE:**  
The AT-HDAIR is designed to extend your desktop to an additional monitor. Using this product in mirrored mode causes additional strain on your computer's processor, and may affect overall video quality.  
**PLEASE USE EXTENDED MODE TO GET BETTER RESULTS.**

Connect any PC via USB Wirelessly  
to your Computer Monitor and HDTV display.

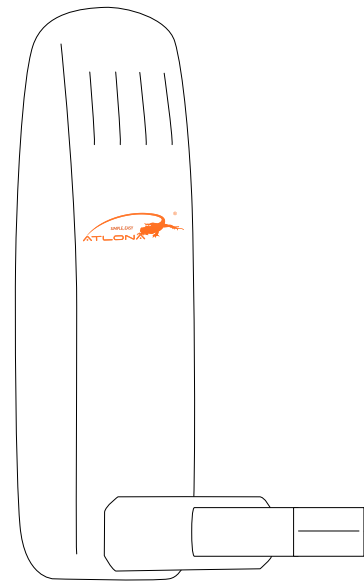
## TABLE OF CONTENTS

1. What's in the Package	1
2. Getting Started	2
3. Positioning the Display Adapter	3
4. Software Installation and First Connection	4
4.1 Connect the PC Adapter to the PC	6
4.2 Connect the Display Adapter	6
5. Wireless USB Manager User Interface	8
5.1 Wireless USB Manager System Tray Icon	8
5.2 Accessing the Wireless USB Manager	8
5.3 Blocking or Disassociating a Device	11
5.4 Changing Device Names in the Wireless USB Manager	12
5.5 Advanced Settings	12
6. Using and Configuring the Display Adapter	14
6.1 Using the Display Adapter	14
6.1.1 Using Mirror Mode	14
6.1.2 Using Extend Mode	15
6.1.3 Laptop Operation with the Lid Closed	15
6.1.4 External Display Only	16
6.2 Configuring the Display via the Display Icon Context Menu	16
6.2.1 Setting Mirror Mode	18
6.2.2 Setting Extend Mode	19
6.3 Configuring the Display via Windows Display Properties	20
6.3.1 Selecting the Correct Display Monitor	20
6.3.2 Setting the Display to Extend or Mirror Mode	21
6.3.3 Adjusting Screen Resolution	21
6.3.4 Adjusting Color Level	21
6.3.5 Setting the Display Adapter as the Primary Display	21
6.4 Optimizing Wireless Video Display	22
6.4.1 Optimizing Internet Video Viewing	22
6.4.2 Setting Aero Desktop Theme in Vista	23
6.4.3 Recommended Media Player Applications	24
6.4.4 Recommended Minimum System Requirements	24
7. LED Indications	25
8. Appendix A: Troubleshooting Help	26
9. Appendix B: Pairing Procedure	28
10. Safety Information	29
11. Warranty	30
12. Product registration	31

WHAT'S IN THE PACKAGE



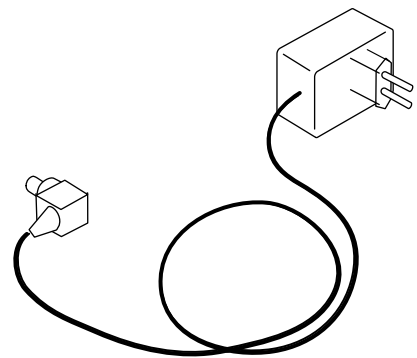
Display Adapter



PC Adapter

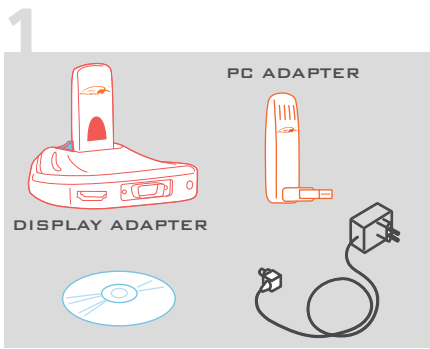


Software CD

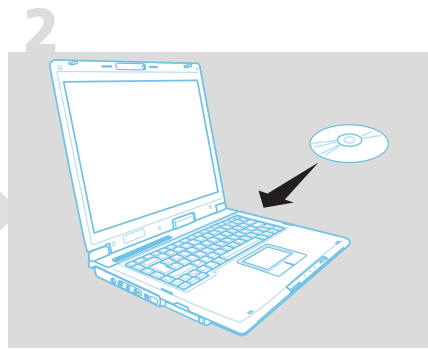



Power Supply Unit

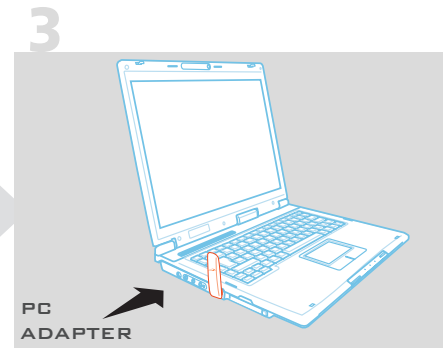
## 2 GETTING STARTED




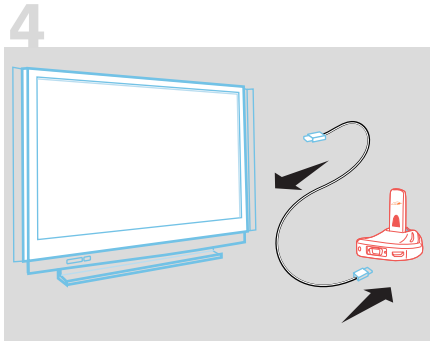
The package includes:  
CD, PC Adapter, Display Adapter (Device Adapter + Video Base), and power supply.



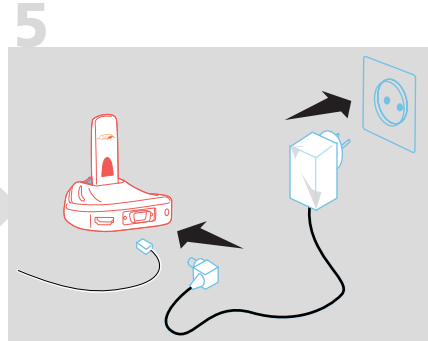
Insert the CD and install software drivers. (A new gray icon appears in system tray )





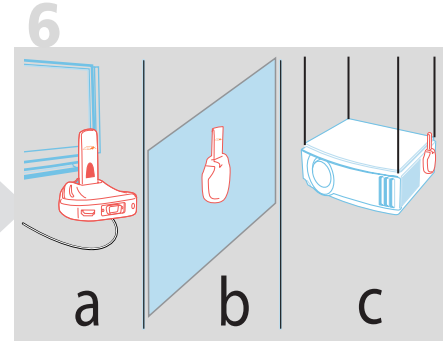
Plug the PC Adapter to an available USB port on your PC. (Tray icon turns red )



Connect your display screen to the Display Adapter, using the appropriate video connection cable (HDMI, VGA).



Plug the power cable into the Display Adapter. Your Display Adapter set is ready for use. (Tray icon turns green , display icon is on )

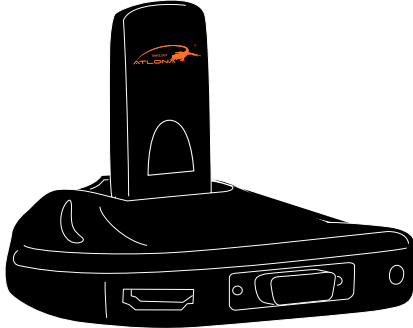


Positioning options:  
a. On a table  
b. Flat, vertically on a wall  
c. Projector on table or a ceiling

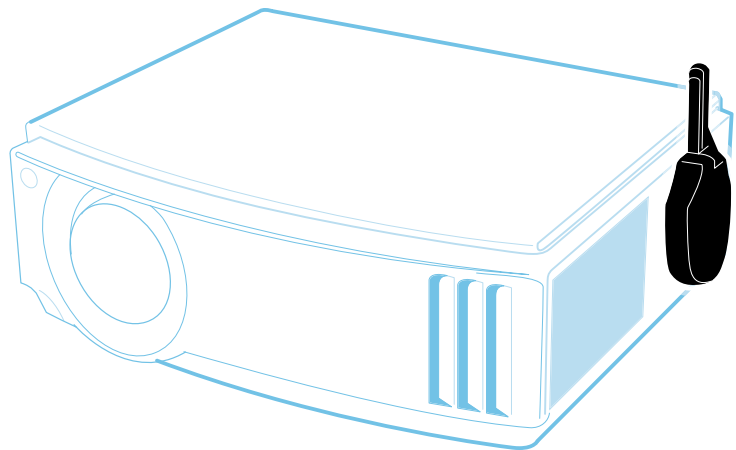
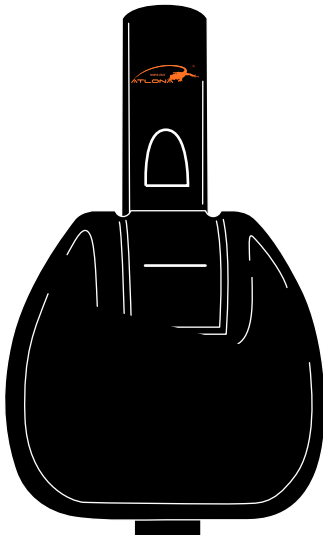
### 3 POSITIONING THE DISPLAY ADAPTER

The Wireless USB Display Adapter is designed for two possible mounting options:

- Simple table placement – the Video Base is placed on a flat horizontal surface, and the Device Adapter is connected at 90 degrees to the base so that it is vertical.

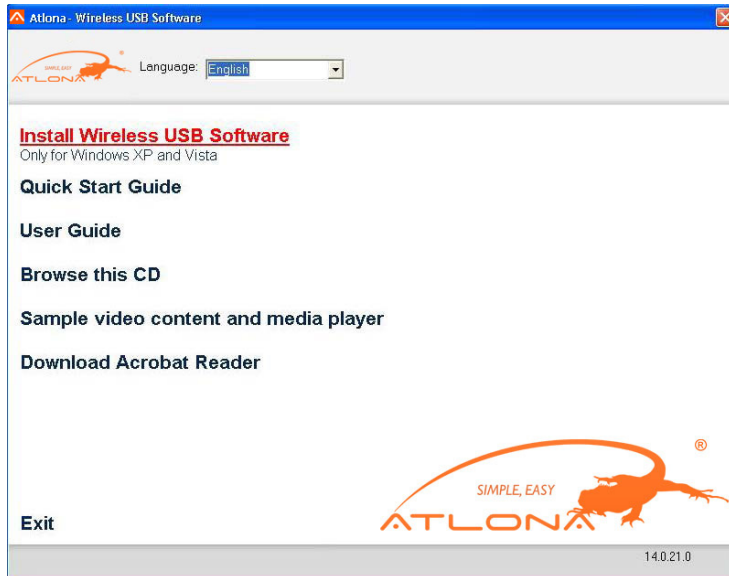


- Vertical mounting –the Video Base is fastened to a wall, a projector, or behind a display screen, and the Device Adapter is connected so that it is flat with the mounting surface, and the Device Adapter is pointing upwards.

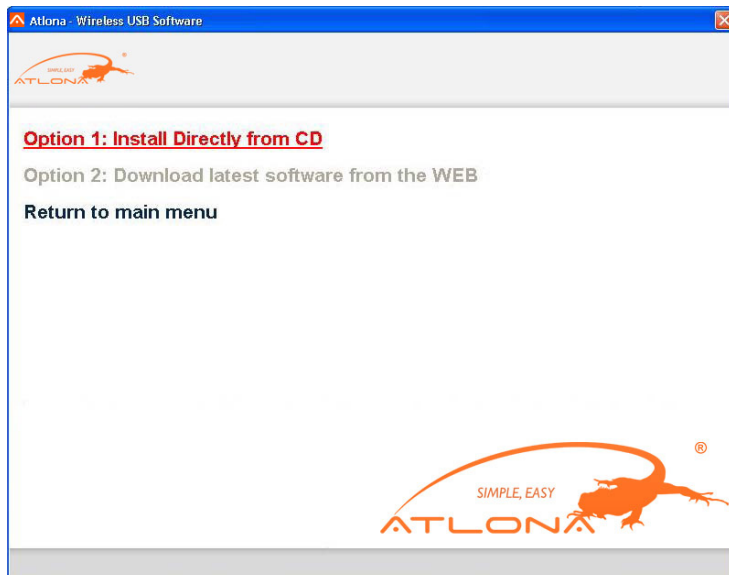


Note: If your PC contains a previous Wireless USB Suite driver installation, please perform a proper uninstall procedure using the Windows **Control Panel**.

1. Ensure that the PC Adapter is unplugged from the PC.
2. Insert the installation CD in the PC CDRom drive.
3. The installation CD Autoplay start menu is displayed.



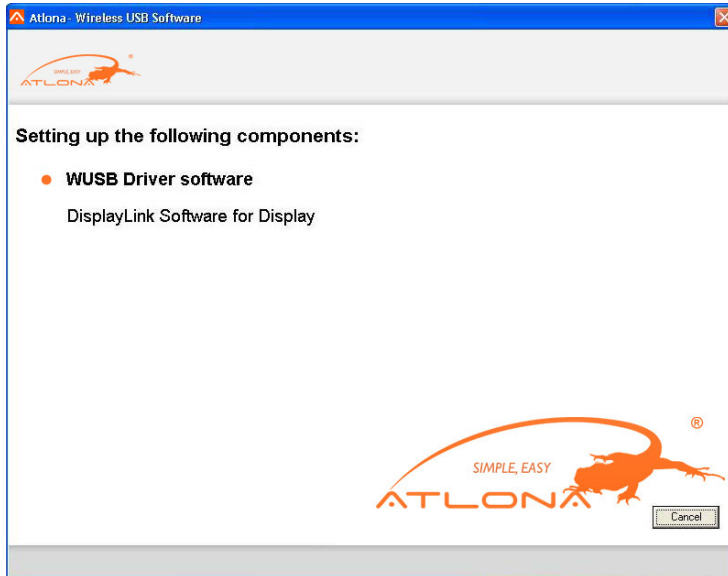
4. Select **.Install Wireless USB Software**.



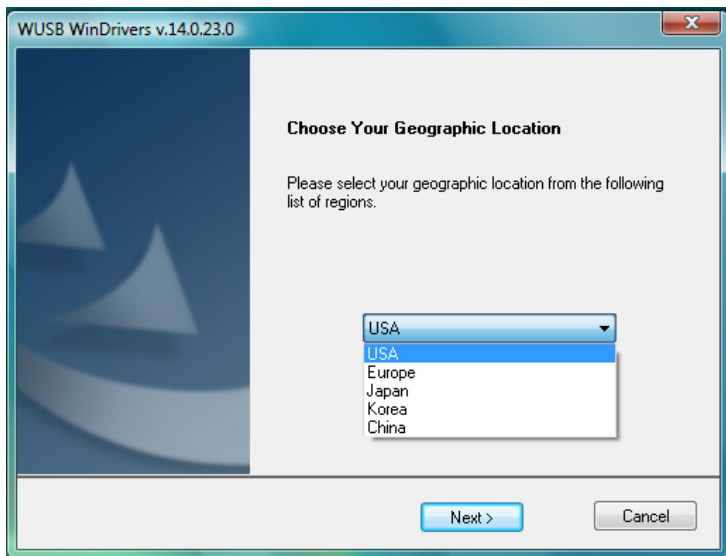
The installer offers two options:

- Option 1: Install Directly from CD
- Option 2: Download latest software from the WEB

5. If you select **Option 1: Install Directly from CD**, the install wizard begins installing the Wireless USB software. The installation process may include more than one stage to accommodate different drivers that are installed. Following the Wireless USB drivers, the Display drivers and application are installed.



6. Choose your geographic region to comply with your local radio regulations. This setting can be changed if needed once the software is installed.



7. Follow the onscreen instructions, and proceed by clicking **Next>** when prompted, or by approving permission to continue the installation.

## 4.1 CONNECT THE PC ADAPTER TO THE PC


- Connect the Wireless USB PC Adapter to a high speed PC USB port. The system will automatically detect and install the drivers for the connected PC Adapter

### Windows VISTA

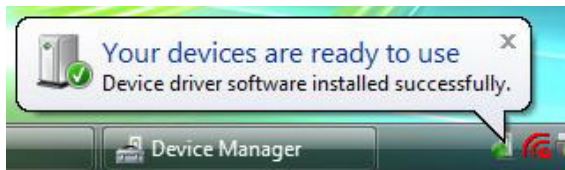


### Windows XP

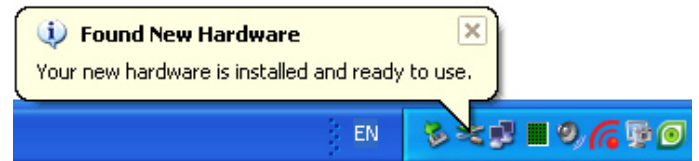


- Once the drivers are installed, the System Tray icon turns red  to indicate that the PC Adapter (Host) is ready to connect to any paired device in range



### Windows VISTA



### Windows XP



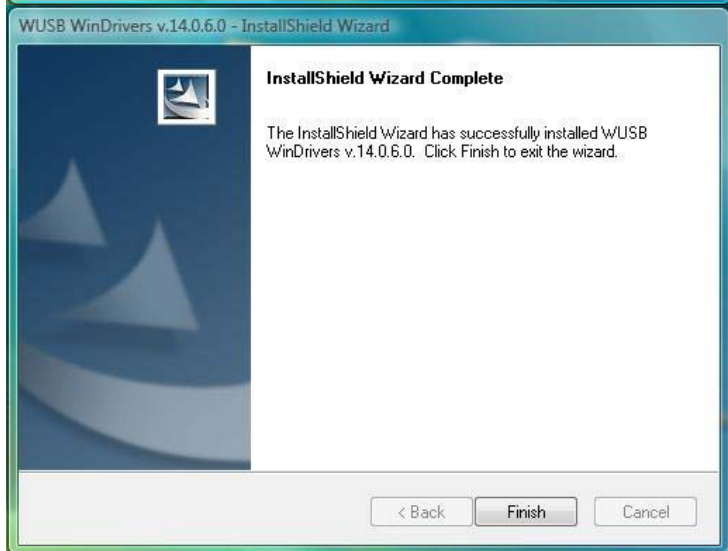
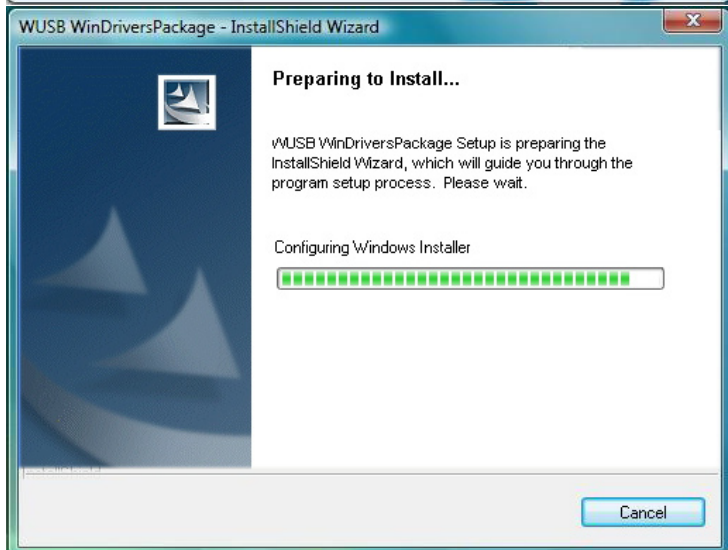
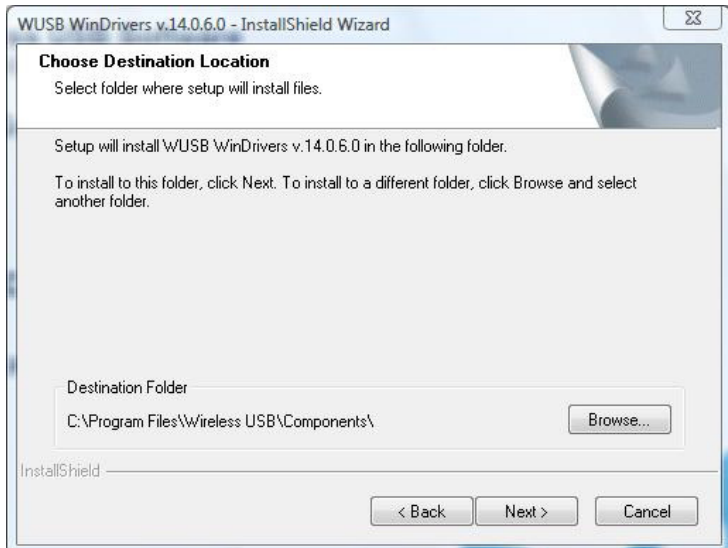
## 4.2 CONNECT THE DISPLAY ADAPTER

1. Attach the Display Adapter to the remote display device (TV/Projector/Monitor) and ensure the PC (with PC Adapter attached) is within 3 meter distance from the Display Adapter for the initial connection. Ensure the two adapters have clear line-of-sight. Connect the 5VDC power supply to the Video Base power receptacle.
2. Wait for the System Tray icon to turn green , indicating that a wireless connection with the Display Adapter has been established. The Display icon  is also displayed as soon as a connection is established and the Display drivers are active.



Note: If you do not see the icon changing to green, or do not see the Display icon, please see Appendix A: Troubleshooting Help for suggestions.











8. When the installation procedure has successfully finished, proceed by clicking **Finish**.

## 5 WIRELESS USB MANAGER USER INTERFACE

The Wireless USB Manager is the main user interface which allows you to monitor and control the available Wireless USB devices and connections that are within range of the PC.

### 5.1 WIRELESS USB MANAGER SYSTEM TRAY ICON

The Wireless USB Manager icon is automatically displayed in the Windows System Tray whenever Windows starts. The color and shape of the icon indicates the current activity state, as described in the following table:

Icon Color	Status
	<b>Connected (green icon)</b> A wireless connection is established with a Wireless USB <b>Device Adapter</b> .
	<b>Host Hardware Enabled (red icon)</b> Wireless USB <b>PC Adapter</b> is connected to the PC (PC Adapter is enabled), but no wireless connection is detected.
	<b>Host Hardware Disconnected (gray icon)</b> Wireless USB PC Adapter is not connected.
	<b>Host Hardware Disabled (gray icon with X)</b> Wireless USB PC Adapter is disabled. <b>Note:</b> Under the Japan regional setting, this icon is displayed whenever the AC power source is disconnected from the PC.
	<b>Wireless USB Channel is Busy (green icon with exclamation)</b> Low channel quality detected, but at least one Wireless USB device is still connected. To improve connection quality, see Appendix A: Troubleshooting Help for suggestions.
	<b>Wireless USB Channel is not available (red icon with exclamation)</b> No available channel detected. To improve connection quality, see Appendix A: Troubleshooting Help for suggestions.

### 5.2 ACCESSING THE WIRELESS USB MANAGER

To access the Wireless USB Manager:

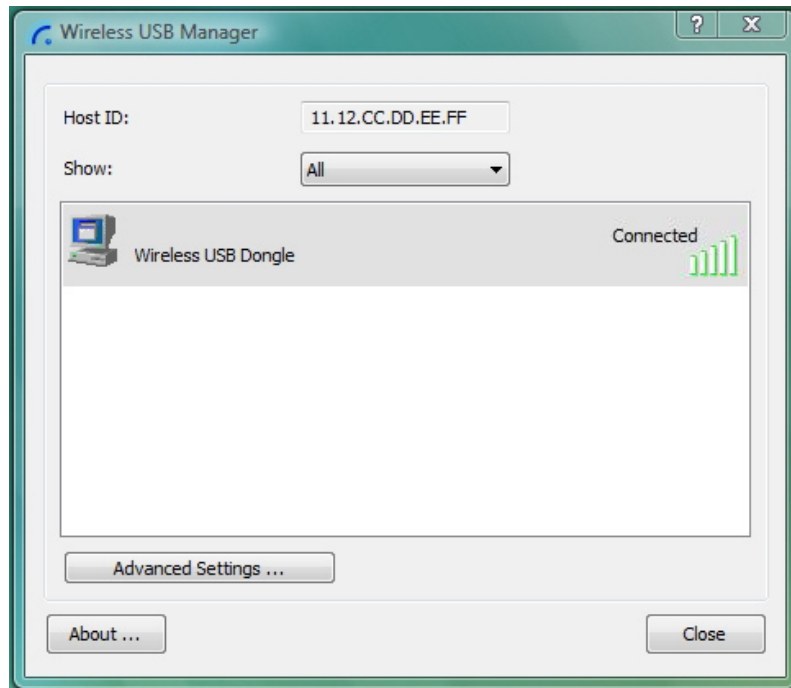
- Right click the Wireless USB Manager System Tray icon  and select **WUSB Connections** to display the **Wireless USB Manager** screen.



Figure 1: System Tray Icon - Context menu




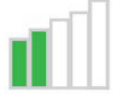




**Table 1: Context menu options**

Menu Option	Description
WUSB Connections	Displays the main user interface, which displays a list of Wireless USB devices that are available, and their connection status ( <b>Connected, Not Connected, Blocked</b> )
Help	Opens the help/troubleshooting file (HTML format) in a browser
About	Displays the About screen, containing version information for the drivers and software.
Exit	Closes the Wireless USB Manager application



**Figure 2: Wireless USB Manager– remote device connected**

**Table 2: Wireless USB Manager options**

Menu Option	Description
Host ID	Displays the currently connected PC Adapter ID number
Show:	<p>Determines in what way the list of Wireless USB devices is displayed:</p> <p><b>All</b> – displays the complete list of all available devices, including those that have been blocked.</p> <p><b>Connected</b> – displays a list of currently connected Wireless USB devices only.</p> <p><b>Not Connected</b> – displays a list of Wireless USB devices which are not connected and not blocked.</p> <p><b>Blocked</b> – displays a list of Wireless USB devices which are blocked.</p>
Connection Quality:	<p>The following are the different states of the connection status icon which indicates the connection quality:</p> <p>Blocked – </p> <p>Not connected – </p> <p>Connected – </p> <p>Medium – </p> <p>Good – </p> <p>Very Good – </p> <p>Excellent – </p>
Advanced Settings	Displays the Advanced Settings screen, allows configuration of the PC Adapter RF settings.
Close	Closes the Wireless USB Manager screen, does NOT close the Wireless USB Manager application.
About	Displays the About screen containing basic information regarding the software version and vendor details
 (Help)	Opens the help/troubleshooting file (HTML format) in a browser

### 5.3 BLOCKING OR DISSOCIATING A DEVICE

The Wireless USB Manager screen allows you to remove devices or to temporarily disable them from connecting to the Host.

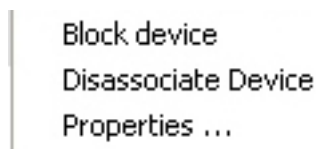
**To Block a device temporarily, and prevent it from connecting to the Host:**

- Right click the device name in the Connection list and select **Block Device**.

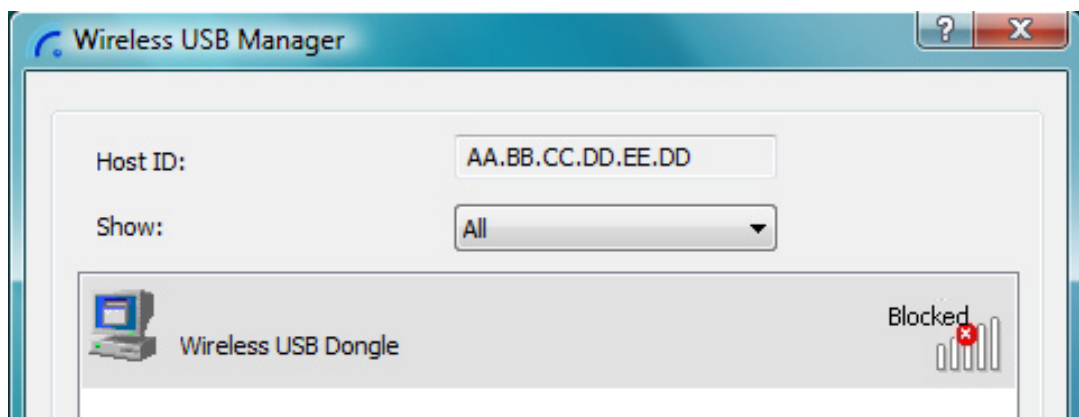
**To remove a device from the list of available devices completely:**

- Right click the device name in the Connection list and select **Disassociate Device**.

*Note: The Dissociate Device option is only available for device adapters purchased separately and not in a set with the PC Adapter.*



**Figure 3: Wireless USB Manager context menu**



**Figure 4: Wireless USB Manager– remote device blocked**

**Table 3: Context menu options**

Menu Option	Description
<b>Block/UnBlock Device</b>	Allows you to temporarily disable a device from connecting with the Host.
<b>Disassociate Device</b>	Removes the device from the list. To return the device to the list, Pairing must be performed again.
<b>Properties</b>	Displays the properties screen for this device.

## 5.4 CHANGING DEVICE NAMES IN THE WIRELESS USB MANAGER

The Wireless USB Manager screen allows you to modify the name of the device that appears in the connections list.

### To modify the device name:

1. Double-click the device name
2. Enter the text that you want.
3. Click anywhere outside of the device name area to finalize.

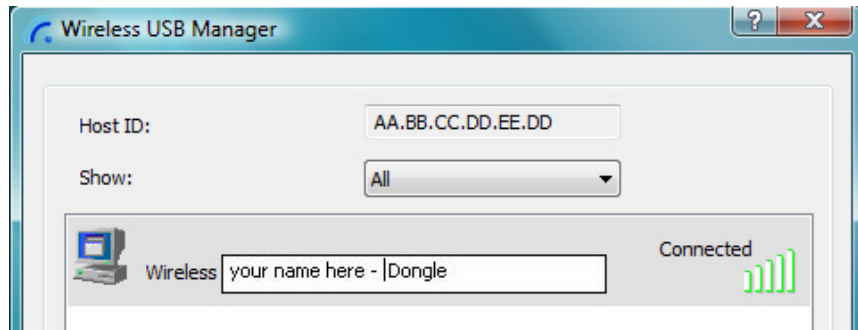


Figure 5: Editing Device Name in Wireless USB Manager

## 5.5 ADVANCED SETTINGS

The **Advanced Settings** screen of the Wireless USB Manager allows viewing advanced settings, and allows configuration of the Channel and Region selection in the Host.

### To access the Advanced Settings screen:

- In the Wireless USB Manager screen, click Advanced Settings

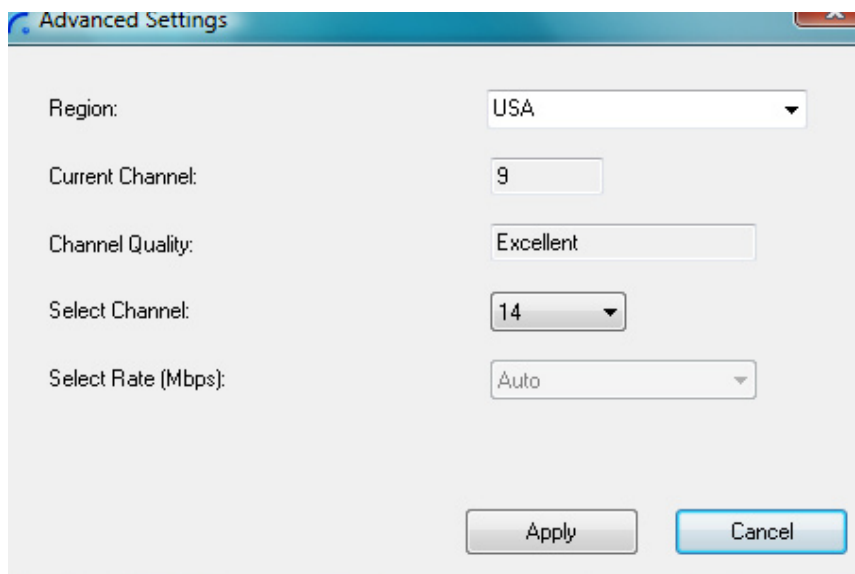


Figure 6: Advanced Settings screen

Option	Description
<b>Region:</b>	Allows selecting the regulatory region: USA, Europe, Japan, Korea, China
<b>Current Channel (read only)</b>	Displays the current PHY Channel
<b>Channel Quality (read only)</b>	Displays Channel quality: Excellent, Very Good, Good, Low, Not Connected
<b>Select Channel</b>	Allows selecting PHY Channels: 9, 10, 11, 12, 13*, 14, 15#
<b>Select Rate (Mbps)</b>	This option is not active.
<b>Apply</b>	Applies the configuration changes that were made
<b>Cancel</b>	Closes the Advanced Settings screen

**Notes:** \* This is the default value for USA region. # This is the only available option for Europe, Japan, Korea and China regions

The following are suggested work modes for connecting a display screen to the Display Adapter:

- **Mirror Mode**
- **Extend Mode**
- **Laptop with Lid Closed**
- **External Display Only**

**Note:** The display properties for the Display Adapter can be configured in two ways: as described in Sec. 6.2 Configuring the Display via the Display Icon Context Menu, or as described in Sec. 6.3 Configuring the Display via Windows Display Properties.

When changing settings, or during first connection between the PC Adapter and Display Adapter, the PC display may flicker or turn on and off as the screen resolution is automatically adjusted.

### 6.1 USING THE DISPLAY ADAPTER

Upon first time operation, the Display Adapter is in Extend mode, this section (Sec. 6.1) describes the different modes that can be set.

In Sec. 6.2 and 6.3 you will find the procedures for configuring these modes.

#### 6.1.1 USING MIRROR MODE

**Mirror** mode is used to display the identical content on the additional screen as is shown on the main PC/ Laptop screen. Mirror mode is generally used to display the PC contents on a larger or higher definition display. See Figure 9: Mirror Mode - displaying PC desktop on a larger display screen.

**Note:** Mirror mode is not recommended for playing HD video.

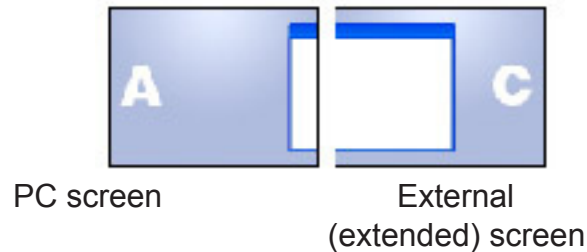


**Figure 9: Mirror Mode - displaying PC desktop on a larger display screen**



## 6.1.2 USING EXTEND MODE

Use the Extend mode to display different content on each display screen. In Extend mode, the display attached to the Display Adapter becomes an extended part of the Windows desktop. The extra desktop area is a great productivity aid, allowing you to view or work with more applications or documents at the same time. You can also use this mode to extend your desktop to fill multiple screens that are positioned next to each other for a larger continuous work space.



**Figure 10: Illustration of extend mode**

**Note:** Extend mode is recommended for playing HD video.



**Figure 11: Extend Mode - using second display for an additional application or a movie**

## 6.1.3 LAPTOP OPERATION WITH THE LID CLOSED


You can work conveniently with a laptop by setting its default action upon closing the lid to “Do nothing” (to prevent the laptop from entering “sleep” or “hibernation” mode, Control Panel > Power Options, “When I close the lid:” - “Do nothing”), and then set the Display Adapter screen as the primary display while disabling the main screen (see Sec. 6.3.5 Setting the Display Adapter as the Primary Display).

The laptop lid can then be closed, and the laptop can be used with the Display Adapter screen and an external keyboard and mouse attached to the laptop. This configuration can be used together with either Mirror mode or Extend mode.

#### 6.1.4 EXTERNAL DISPLAY ONLY

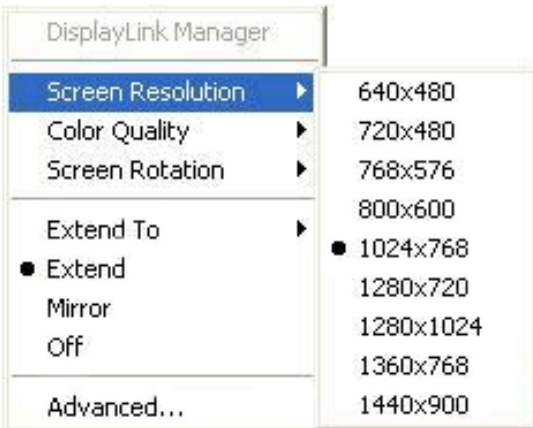
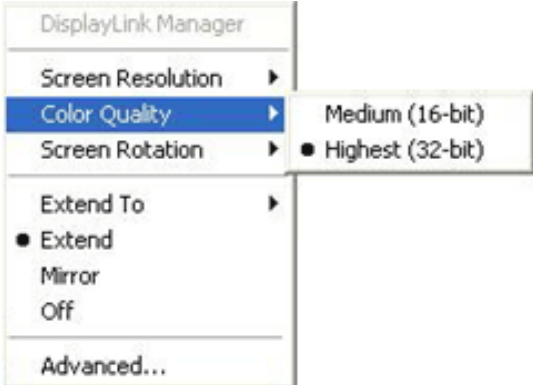


When you want to use the external display only, (see Sec. 6.3.5 Setting the Display Adapter as the Primary Display), you can close your main monitor and view movies on the external display attached to the Display Adapter.

#### 6.2 CONFIGURING THE DISPLAY VIA THE DISPLAY ICON CONTEXT MENU

When a link is established with the Wireless USB Display Adapter, the Display drivers are activated and the Display icon  appears in the Windows system tray.

The right-click context menu of the Display icon contains configuration options that correspond to the display mode.

**Note:** When changing settings, the PC display may flicker or turn on and off as the screen resolution is automatically adjusted.

Configuration Option	Options available	Remarks
Screen Resolution		Extend mode only
Color Quality		Extend mode only
Screen Rotation		Mirror and Extend modes
Extend To		Extend mode only
Extend	Sets the Extend mode	
Mirror	Sets the Mirror mode	
Off	Disables the remote display	Select Mirror or Extend mode to enable the display
Advanced	Opens the Windows Display Settings screen	

To set the display to Mirror mode:


- Right click the DisplayLink System Tray icon  and select **Mirror** from the context menu

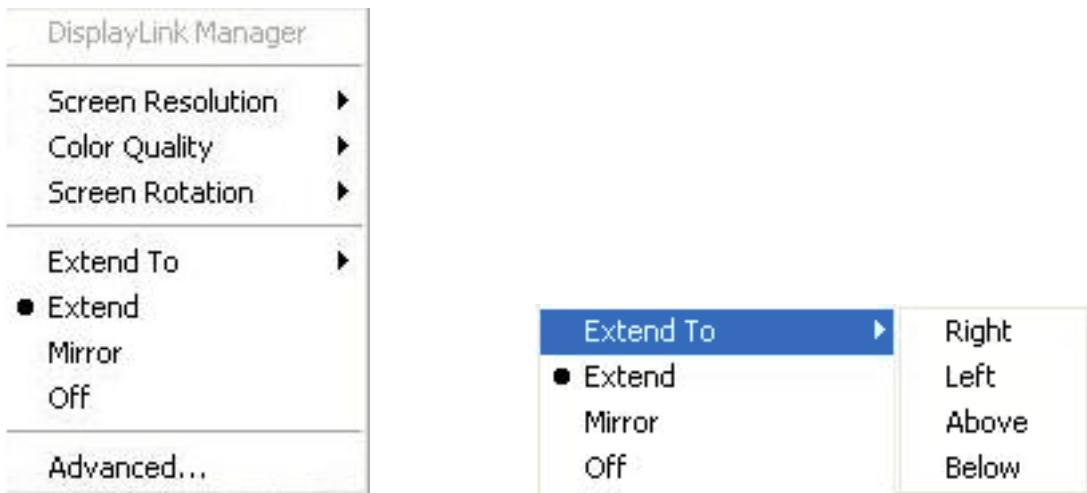


- The resolution, color depth and refresh rate of the primary screen are duplicated on the display connected to the Display Adapter.
- If the display connected to the Display Adapter supports a lower resolution than the primary display, the primary graphics device will have its resolution changed automatically to ensure the whole picture fits on the additional display screen.
- If the display screen connected to the Display Adapter is larger than the primary screen, the image will be adjusted to a letter-box frame to preserve the correct aspect ratio.

**Note:** When changing from Extend to Mirror mode, it is recommended to first set the Display to Off, and then set to Mirror.

**To set the display to Extend mode:**

- Right click the DisplayLink System Tray icon  and select **Extend** from the context menu. You can also select the **Extend To** option to specify which side of the extended space is occupied by the extended display.



**Note:** When changing from Mirror to Extend mode, it is recommended to first set the Display to Off, and then set to Extend.

To place an application window in the extended space, use the following tips:

- Reduce the application window size to about half the normal size, and then drag the application window (dragging by the Title Bar at the top of the screen) past the edge of your main display and into the extended display space. Resize the window in the extended space as needed for comfortable viewing.
- When dragging a running process window such as a movie or other application from the main screen to the extended screen, it is recommended to pause or stop the running application first, and restart it in the extended screen.

## 6.3 CONFIGURING THE DISPLAY VIA WINDOWS DISPLAY PROPERTIES

Display settings can also be configured from the Windows Display Properties dialog box. (In Windows Vista: right click on the desktop, select Personalize > Display Settings. In Windows XP: right click on the desktop, select Properties>Settings tab).

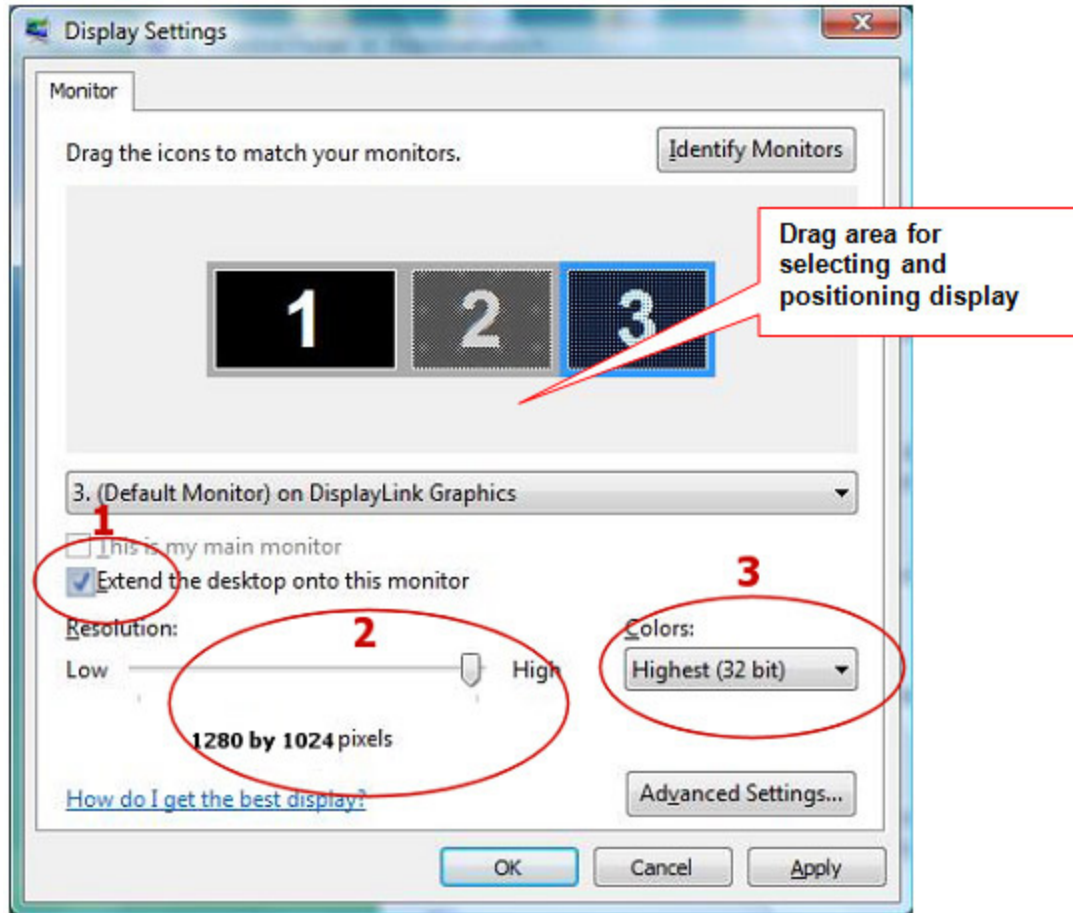


Figure 12: Windows Display Settings

### 6.3.1 SELECTING THE CORRECT DISPLAY MONITOR

In the monitor drop down box, find the entry for the Display Adapter display monitor “...on **DisplayLink Graphics**”. You can arrange this display’s position with respect to the other monitors on the extended desktop by using the drag area at the top of the Windows Display Settings dialog. If you are not sure which number represents which display, click **Identify Monitors** and a large identifying number will appear on each display.

### 6.3.2 SETTING THE DISPLAY TO EXTEND OR MIRROR MODE

To set the display in Extend mode, check the option Extend the desktop onto this monitor

To set the display into Mirror mode, uncheck the box marked Extend the desktop onto this monitor (see circle #1 in Figure 12).

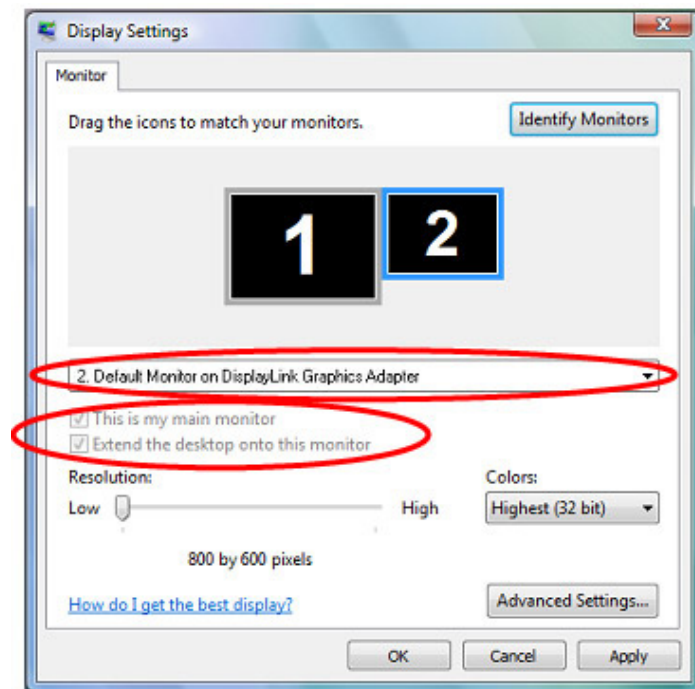
### 6.3.3 ADJUSTING SCREEN RESOLUTION

Use the **Resolution** slider to adjust the desired resolution of the display (see circle #2 in Figure 12).

### 6.3.4 ADJUSTING COLOR LEVEL

Use the **Colors** drop-down box to select a color complexity level (see circle #2 in Figure 12).

### 6.3.5 SETTING THE DISPLAY ADAPTER AS THE PRIMARY DISPLAY



**To make the Display Adapter display the primary display:**

1. Select the screen that is connected to the Display Adapter - for example **“Default Monitor on DisplayLink Graphics Adapter”** as shown in the screen above.
2. Check the option **Extend the desktop onto this monitor**.  
(In Windows XP - **Extend my Windows desktop onto this monitor**).
3. Check the option **This is my main monitor**.  
(in Windows XP - **Use this device as the primary monitor**).
4. Click **OK** to save the new settings.

**Note:** On some PCs it is necessary to disable the main display (uncheck the box marked ‘Extend the desktop onto this monitor’ for the main display) as part of the same settings change.

The Display Adapter remains the primary one if the PC enters Hibernate or Suspend mode or is rebooted. If the Display Adapter is detached, the main display becomes the primary display again.



## 6.4 OPTIMIZING WIRELESS VIDEO DISPLAY

The following are suggested operating modes for best results in displaying video with the Wireless USB Display Adapter. Additional suggestions can be found in Appendix A: Troubleshooting Help.

### 6.4.1 OPTIMIZING INTERNET VIDEO VIEWING

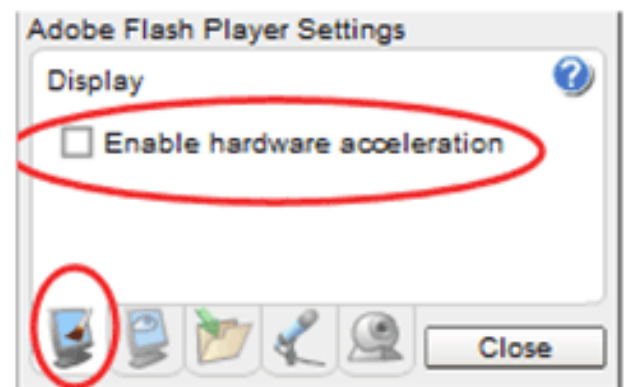
Many video content websites use an embedded Adobe Flash player to show video content. In some cases to achieve best performance with the Flash player, (for example, when viewing online video content in full screen mode) adjust the Flash Player settings as follows.

#### To optimize the Flash player for the Display Adapter:

1. Right click the video content on the website and select Settings from the Adobe Flash Player context menu.



2. In the Adobe Flash Player Settings screen, uncheck the Enable hardware acceleration option and click Close to close the settings screen.
3. Resume viewing the video content.





## 6.4.2 SETTING AERO DESKTOP THEME IN VISTA

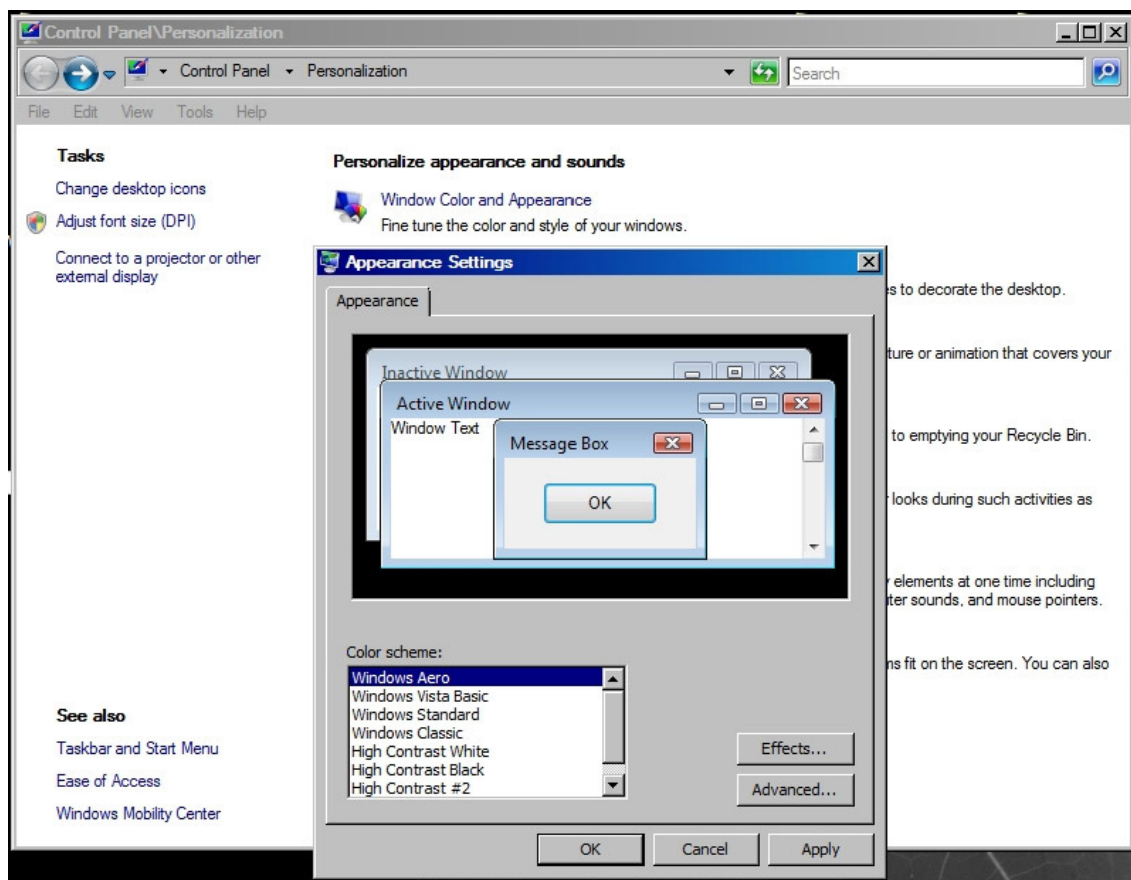
For best performance when using the Wireless Display Adapter with Windows Vista operating platform, it is recommended to use the Aero desktop theme.

**To set the Vista desktop to the Aero theme:**

4. Right click the desktop and select Personalize.



5. In the Control Panel\Personalization screen, select **Windows Color and Appearance**



6. Select **Windows Aero** from the **Color scheme** list, click **OK** to save the new setting.

### 6.4.3 RECOMMENDED MEDIA PLAYER APPLICATIONS

On Vista WDDM Aero and Windows XP (in Extend mode), the Display Adapter can display media files and DVDs using the following media players:

- Windows Media Player 11 (<http://www.microsoft.com/windows/windowsmedia/default.mspx>)
- WinDVD 8 ([www.intervideo.com](http://www.intervideo.com))
- PowerDVD 7 ([www.cyberlink.com](http://www.cyberlink.com))
- RealPlayer 11 ([www.real.com](http://www.real.com))

**Note:** To get a better idea of what you can do with the Display Adapter and multiple display screens, please see the web page “How it Works” at this address:  
[http://www.displaylink.com/how\\_it\\_works.html](http://www.displaylink.com/how_it_works.html)

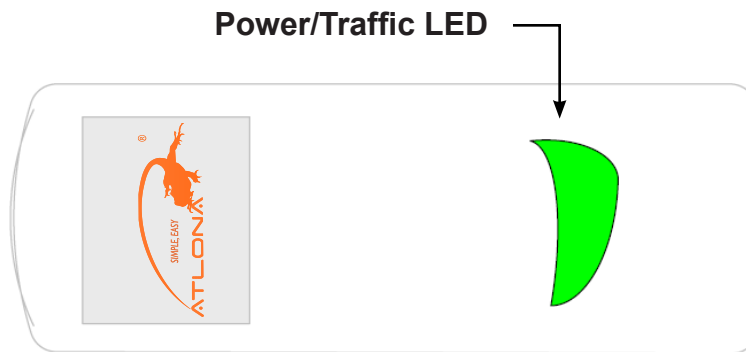
### 6.4.4 RECOMMENDED MINIMUM SYSTEM REQUIREMENTS

For best performance, the following are the recommended minimum system requirements:

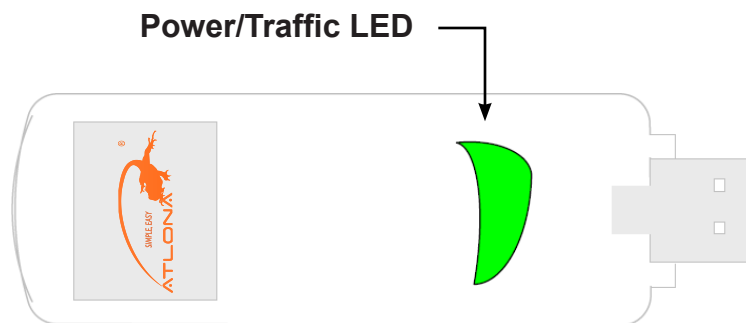
- Personal computer with USB 2.0 port available
- Microsoft Windows® XP SP3, or Microsoft Windows Vista SP1 (32 or 64 bit)
- TV/display/projector with VGA or HDMI port
- At least 1.2GHz Single Core CPU (1.8GHz Single Core or 1.6GHz Dual Core recommended)
- 512MB RAM memory minimum (1GB RAM memory recommended)

The following LED indications allow you to see the operational status of the Wireless USB adapters.






- **Power:**
  - OFF when no power is applied or adapter is not connected
  - Momentary green when initially connected to USB port.
- **Traffic** — Rapid flashing when data is received.


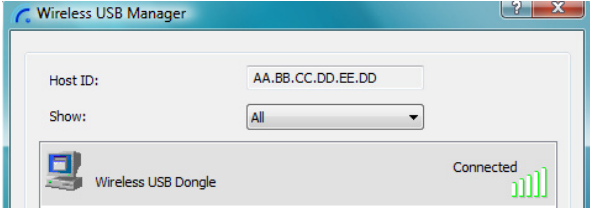



**Figure 8: Wireless USB PC Adapter LED**



**Figure 9: Wireless USB Device Adapter LED**

Problem/Question	Symptoms	Solution
<p>PC Adapter is attached to PC, but I see the Gray icon in System Tray</p> 	<p>Host does not show Ready  (red) icon in System Tray</p> <p>OR</p> <p>Host does not show Connected  (green) icon in System Tray</p>	<ul style="list-style-type: none"> <li>• Detach and re-attach PC Adapter</li> </ul> <p>OR</p> <ul style="list-style-type: none"> <li>• Exit from the Wireless USB Manager (right-click the System Tray icon, select Exit) and restart the Wireless USB Manager.</li> </ul> <p>OR</p> <ul style="list-style-type: none"> <li>• Detach PC Adapter, restart PC, re-attach the PC Adapter</li> </ul>
<p>Problems with Pairing -</p>	<p>The Pairing procedure does not result in the confirmation screen “WUSB device has been paired”, or results in an error message.</p> 	<ul style="list-style-type: none"> <li>• Detach and re-attach Device Adapter</li> </ul> <p>OR</p> <ul style="list-style-type: none"> <li>• Re-attach PC Adapter, then attach Device Adapter</li> </ul> <p>OR</p> <ul style="list-style-type: none"> <li>• Detach all Adapters, restart PC and try Pairing again</li> </ul>
<p>Pairing with multiple Hosts present – each pairing must correspond to a specific PC Adapter (Host)</p>	<p>If more than a single PC Adapter (Host) has been attached to the PC at any time, the pairing process requires that at least one PC Adapter be connected while the Device Adapter is being paired</p> 	<ul style="list-style-type: none"> <li>• Ensure that a single PC Adapter is attached to the PC, and then re-attach the Device Adapter to perform Pairing</li> </ul>

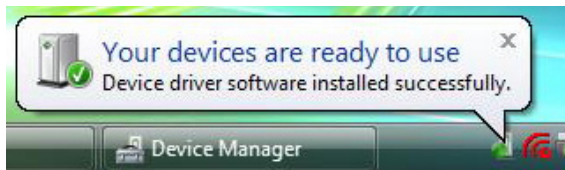
Problem/Question	Symptoms	Solution
<p>Problems in establishing connection with Device  (red) icon in System Tray</p>	<p>To check if a device is connected, right click the System Tray icon and select <b>Wireless USB Connections</b> to view the list of available devices and to see the green <b>Connected</b> icon next to the device name of the newly established connection</p>  <p>- Green System Tray icon  does not light up to indicate that a connection has been established, OR - The Device is not listed in the <b>Wireless USB Manager</b> screen</p>	<ul style="list-style-type: none"> <li>• <b>Power not connected to Device</b> - ensure that the correct power supply is connected to the device side.</li> <li>• <b>Pairing was not completed</b> – perform the Pairing procedure (again) to ensure that this particular Device Adapter is Paired with the current Host.</li> <li>• <b>Wireless Device is out of range</b> - if you are experiencing frequent Wireless link disconnection, the Wireless Device may be out of range –the solution is to bring the Wireless Device closer to the Wireless USB Host.</li> </ul>
<p>Channel busy message displays when I try to change the channel</p> <p><b>Note:</b> manual channel selection may be restricted by local communication regulation laws.</p>	<p>External radio interference may exist close to the PC/device</p> <p>Channel selection SW may have failed</p>	<ul style="list-style-type: none"> <li>• Another wireless system may be in use in proximity to the PC or device environment, and may cause temporary interference to the wireless USB system. Try to select a different channel (where applicable - local regulatory restrictions may apply)</li> <li>• Close the message box, detach the PC Adapter from your PC and re-attach it. If the message displays again, try to change the channel again.</li> </ul>

If you need to perform the Pairing procedure again for any reason (for example, connecting to a new unrecognized host PC Adapter), follow these steps:

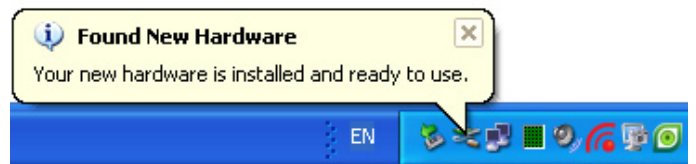
**To perform Pairing:**

1. Ensure that a Wireless USB Host or PC Adapter is connected to the PC.
2. Remove the Device Adapter from the Video Base and connect it directly to the host PC USB port, do not use the Video Base or any other accessory to connect to the PC.
3. Upon first time connection of a Device Adapter to the PC, the Pairing driver is installed automatically.

**Windows VISTA**



**Windows XP**



4. Once the Pairing driver is installed, pairing is automatically performed between the host PC and the Device Adapter, and the following confirmation message is displayed:

**Windows VISTA**



**Windows XP**



5. Click OK to confirm and close the Cable Pairing screen.
6. Remove the Device Adapter from the PC and reconnect it to the Video Base.

### Safeguards

To reduce the risk of electric shock, do not expose this product to rain or moisture.

If the wall plug does not fit into your local power socket, hire an electrician to replace your obsolete socket.

Do not modify the wall plug. Doing so will void the warranty and safety features.

This equipment should be installed near the socket outlet and the device should be easily accessible in case it requires disconnection.

### Precautions

FCC Regulations state that any unauthorized changes or modifications to this equipment not expressly approved by the manufacturer could void the user's authority to operate this equipment.

Operate this product using only the included external power supply. Use of other power supplies could impair performance, damage the product or cause fires.

In the event of an electrostatic discharge, this device may automatically turn off. If this occurs, unplug the device, and plug it back in.

Protect and route power cords so they will not be stepped on or pinched by anything placed on or against them. Be especially careful of plug-ins, or cord exit points from this product.

Avoid excessive humidity, sudden temperature changes or temperature extremes.

Keep this product away from wet locations such as bathtubs, sinks, laundries, wet basements and swimming pools.

Use only accessories recommended by ATLONA to avoid fire, shock or other hazards.

Unplug the product before cleaning. Use a damp cloth for cleaning. Do not use cleaning fluid or aerosols, which could enter the unit and cause damage, fire or electrical shock. Some substances may also mar the finish of the product.

Never open or remove unit panels or make any adjustments not described in this manual. Attempting to do so could expose you to dangerous electrical shock or other hazards. It may also cause damage to your AT-HDAIR. Opening the product will void the warranty.

Do not attempt to service the unit. Instead disconnect it and contact your Authorized ATLONA reseller or contact ATLONA directly.

**1. LIMITED WARRANTY**

Atlona Technologies warrants that (a) its products (the “Product”) will perform substantially in accordance with the accompanying written materials for a period of 3 YEARS from the date of receipt and (b) that the Product will be free from defects in materials and workmanship under normal use and service for a period of 3 years. In the event applicable law imposes any implied warranties, the implied warranty period is limited to 3 years from the date of receipt. Some jurisdictions do not allow such limitations on duration of an implied warranty, so the above limitation may not apply to Customer.

**2. CUSTOMER REMEDIES**

Atlona Technologies and its suppliers’ entire liability and Customer’s exclusive remedy shall be, at Atlona Technologies’ option, either return of the price paid for the Product, or repair or replacement of the Product that does not meet this Limited Warranty and which is returned to Atlona Technologies with a copy of Customer’s receipt. This Limited Warranty is void if failure of the Product has resulted from accident, abuse, or misapplication. Any replacement Product will be warranted for the remainder of the original warranty period or 3 year, whichever is longer.

**3. NO OTHER WARRANTIES**

TO THE MAXIMUM EXTENT PERMITTED BY APPLICABLE LAW, ATLONA TECHNOLOGIES AND ITS SUPPLIERS DISCLAIM ALL OTHER WARRANTIES, EITHER EXPRESS OR IMPLIED, INCLUDING, BUT NOT LIMITED TO IMPLIED WARRANTIES OF MERCHANTABILITY AND FITNESS FOR A PARTICULAR PURPOSE, WITH REGARD TO THE PRODUCT AND ANY RELATED WRITTEN MATERIALS. THIS LIMITED WARRANTY GIVES CUSTOMER SPECIFIC LEGAL RIGHTS. CUSTOMER MAY HAVE OTHER RIGHTS DEPENDING ON THE JURISDICTION.

**4. NO LIABILITY FOR DAMAGES**

TO THE MAXIMUM EXTENT PERMITTED BY APPLICABLE LAW, IN NO EVENT SHALL ATLONA TECHNOLOGIES OR ITS SUPPLIERS BE LIABLE FOR ANY DAMAGES WHATSOEVER (INCLUDING WITHOUT LIMITATION, SPECIAL, INCIDENTAL, CONSEQUENTIAL, OR INDIRECT DAMAGES FOR PERSONAL INJURY, LOSS OF BUSINESS PROFITS, BUSINESS INTERRUPTION, LOSS OF BUSINESS INFORMATION, OR ANY OTHER PECUNIARY LOSS) ARISING OUT OF THE USE OF OR INABILITY TO USE THIS PRODUCT, EVEN IF ATLONA TECHNOLOGIES HAS BEEN ADVISED OF THE POSSIBILITY OF SUCH DAMAGES. IN ANY CASE, ATLONA TECHNOLOGIES’ AND ITS SUPPLIERS’ ENTIRE LIABILITY UNDER ANY PROVISION OF THIS AGREEMENT SHALL BE LIMITED TO THE AMOUNT ACTUALLY PAID BY YOU FOR THE PRODUCT. BECAUSE SOME JURISDICTIONS DO NOT ALLOW THE EXCLUSION OR LIMITATION OF LIABILITY FOR CONSEQUENTIAL OR INCIDENTAL DAMAGES, THE ABOVE LIMITATION MAY NOT APPLY TO YOU.



ATLONA  
2151 O’toole Ave, Ste D  
San Jose CA 95131  
Toll Free: 1-877-536-3976  
International: 408-954-8782  
FAX: 408-954-8792  
Website: [www.atlona.com](http://www.atlona.com)  
E-MAIL: [info@atlona.com](mailto:info@atlona.com)



Thank you for purchasing this Atlona product — we hope you'll enjoy it.



We also hope that you'll take a few moments to register your new purchase. Registration creates an ownership record if your product is lost or stolen and helps ensure you'll receive notification of performance issues and firmware updates.

At Atlona, we respect and protect your privacy and assure you that your registration information is completely secure. Of course, Atlona product registration is totally voluntary and failure to register will not diminish your limited warranty rights.

To register go to [www.atlona.com/registration](http://www.atlona.com/registration)