

R 9849999

INSTALLATION MANUAL

Ceiling Mount for CLM series projector

Date 26/11/07

Rev: 00

Art. No.: R 59770182

Due to constant research, the information in this manual is subject to change without notice.

Produced by BARCO NV, Nov. 2007.

All rights reserved.

Trademarks are the rights of their respective owners.

BARCO n.v.

Noordlaan 5

B-8520 Kuurne

Belgium

Tel : +32/56/368211

Fax : +32/56/351651

E-mail : sales.bps@barco.com

Visit Barco at the web: <http://www.barco.com>

Printed in Belgium

Safety guidelines

WHO

This installation manual must be performed by authorized technical personnel only.

WARNING

The ceiling should be capable of supporting a weight of at least 5 times the total weight of the Ceiling Mount and Projector (i.e. at least 160 kg or 353LB). If it cannot, the ceiling must be reinforced. Improper installation may result in serious personal injury.

Consult a professional structural engineer prior to suspending the Ceiling Mount from a structure not intended for that use.
Always ensure the working load limit of the structure supporting the Ceiling Mount.

CAUTION

Installing the Ceiling Mount should be performed only after you are thoroughly familiar with all of the following safety checks and installation instructions. To do otherwise increases the risk of hazards and injury to the user.

This support is designed for intended use only with Barco CLM series projectors. It supports maximum 33 kg or 73LB. Use with any other appliance/projector may result in instability causing possible injury.

Do not modify and/or replicate any component. Barco n.v. uses specific materials and manufacturing processes in order to achieve part strength. Consult Barco nv for assistance with custom applications.

Always follow Barco installation instructions. Contact Barco n.v. if you should have any question regarding the safety of an application.

PRODUCT CARE

Ceiling Mount components should be kept dry, clean, lubricated (if required), coated properly, and otherwise maintained in a manner consistent with part design. Barco products must be used in a manner consistent with their design and inspected on a routine basis for security, wear, deformation, corrosion and any other circumstances that may affect the load handling capability of the part.

Barco n.v. recommends inspections at least once a year for all installations and increasing in frequency for more critical installations. If the part is found to have damage, which may cause a decrease in load capability, the part must be removed from service immediately.

Under no circumstances are Barco parts reparable by anyone other than Barco n.v.

Description and Contents of the kit

Purpose of the Kit

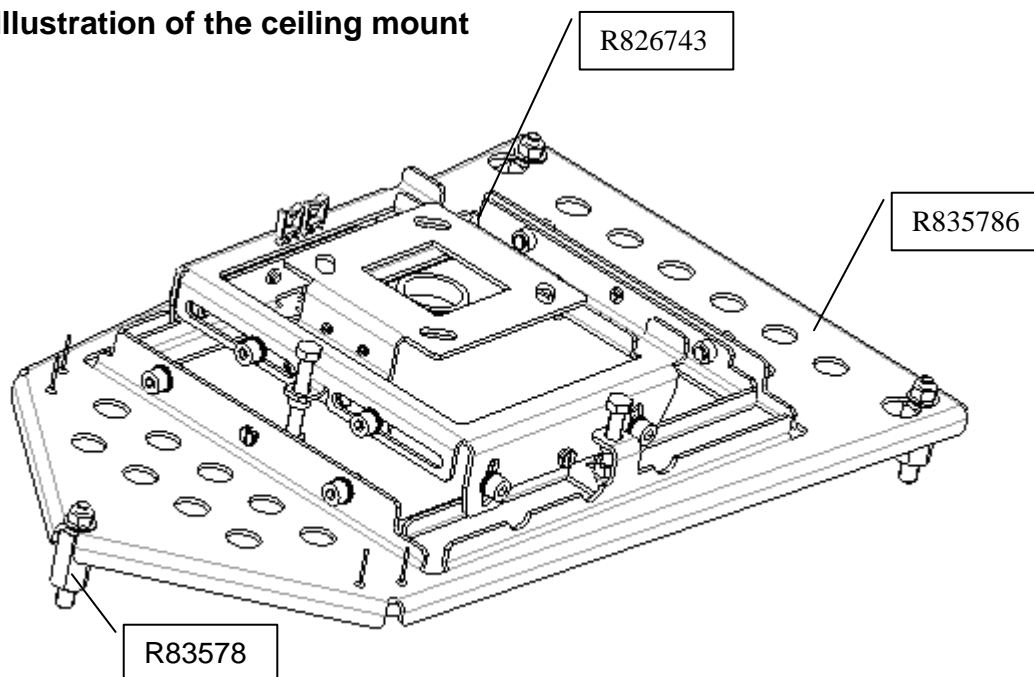
The kit is designed for the CLM CM R10 series projectors and allows the projector to be mounted to the ceiling.

Contents of the Kit

Following items are included:

- Kit R9849999: Ceiling mount
- Installation manual : R59770182
- Mounting bracket and Screws: R835785 Qty 3 Nos and R 826743 qty 1 No, - --
- Safety Chain set : B361213 Qty 1 Nos , A577535 qty 1 Nos, A566050 qty 1 nos and B363509 qty 2 nos
- Cable cover assy

Illustration of the ceiling mount



Remark:

The ceiling mount can also be mounted using one of the 2 available bars (height adjustment) and cable cover assy.

R9841260: short bar R822922 and cable cover assy .

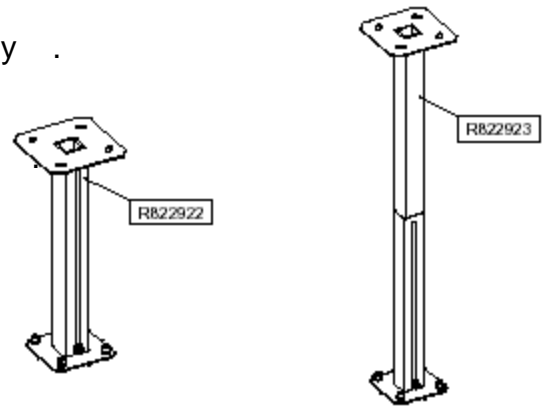
min length = 445mm(17.52 inch)

max length = 810 mm(31.89 inch)

R9841261: long bar R822923 cable cover kit R984

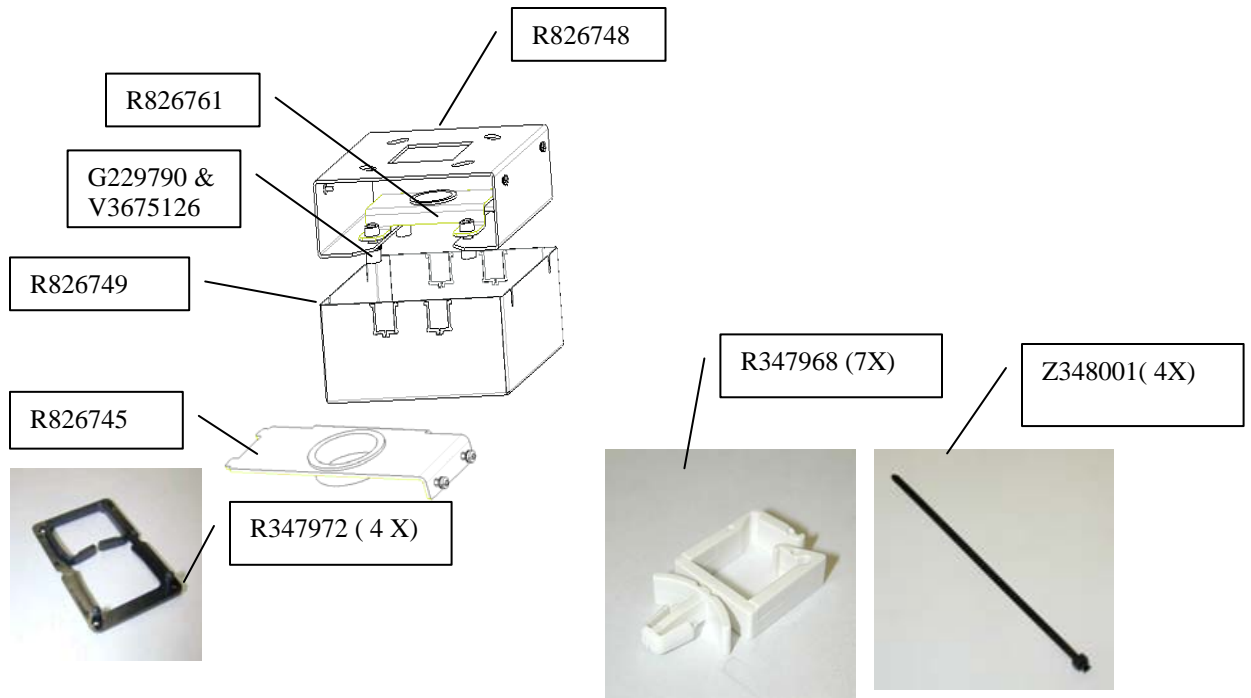
min length = 845mm(33.27 inch)

max length = 1210 mm(47.64 inch)



I

Illustration of the Cable Cover Assy:



Note: The assembly is used only when ceiling mount is mounted along with IQ bar for hiding and guiding the cables.

Mounting the Assembly

Necessary Tools

1. Torx screw driver for M3 screw
2. Hexagonal driver (n° 6)
3. Ring spanner 12-13mm
4. Side spanner 12-13mm
5. Cross head screw driver for M8 screw



Centering the ceiling mount

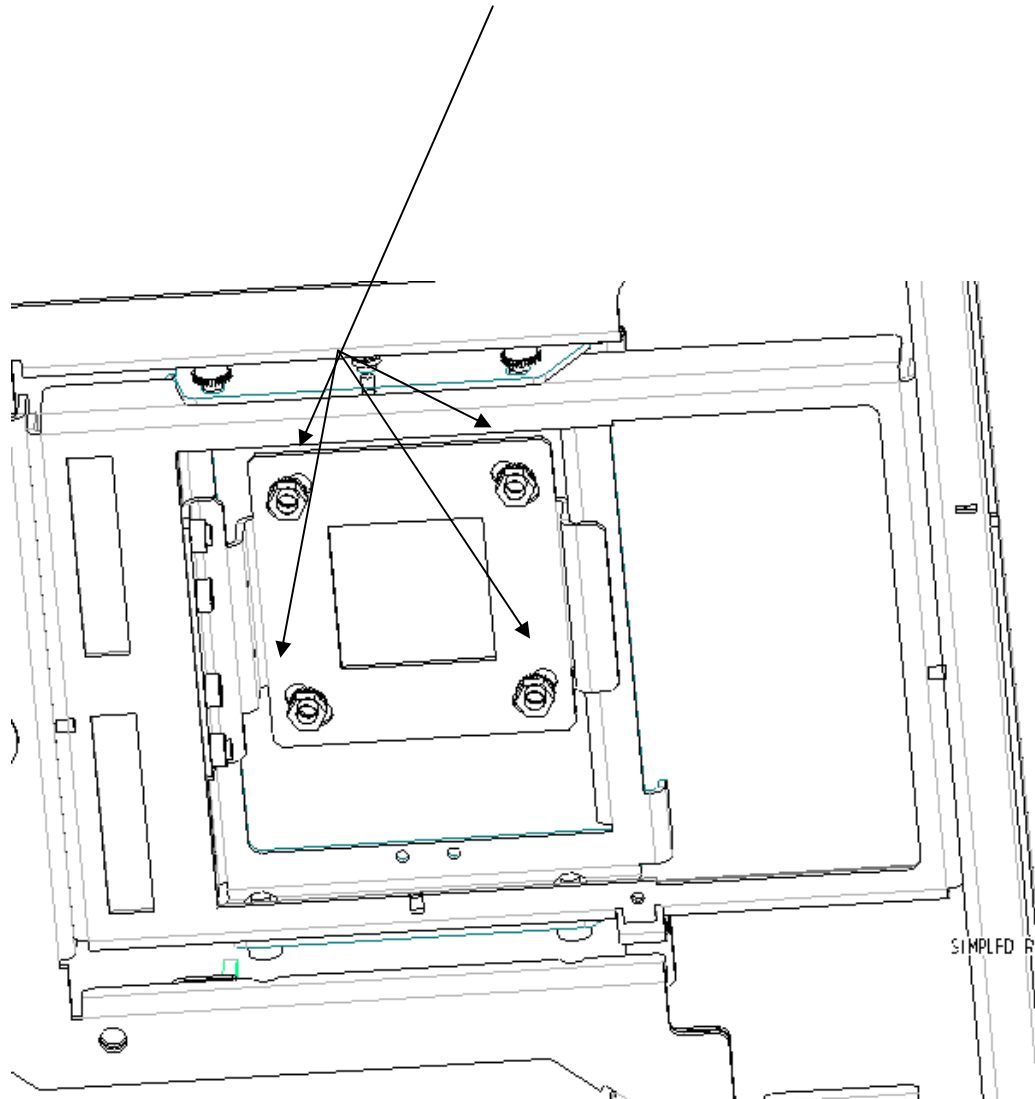
Mark the position on the ceiling hole. Since the center of the lens does not coincide with the center of the projector, the center of the lens has been marked on the ceiling mount.

Remark

The horizontal shift of the ceiling mount allows to re-enter the projector later on, However, centering decently the base plate insures a good horizontal shift margin afterwards.

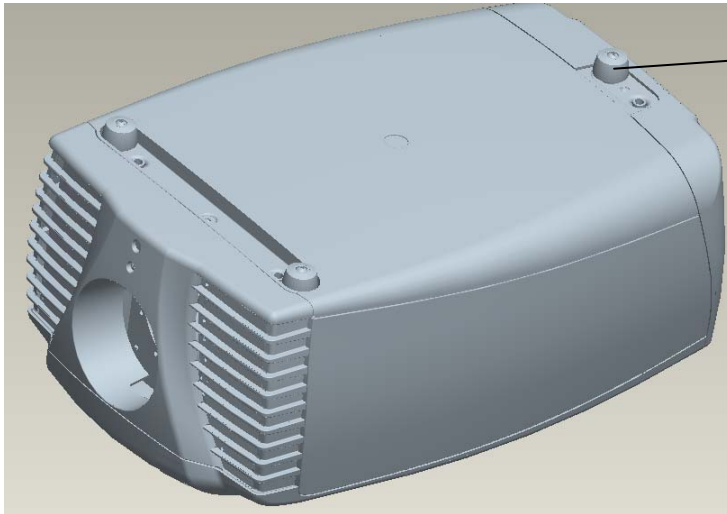
Mounting the Assembly

The fixation can be done with standard M8 bolt (not supplied)



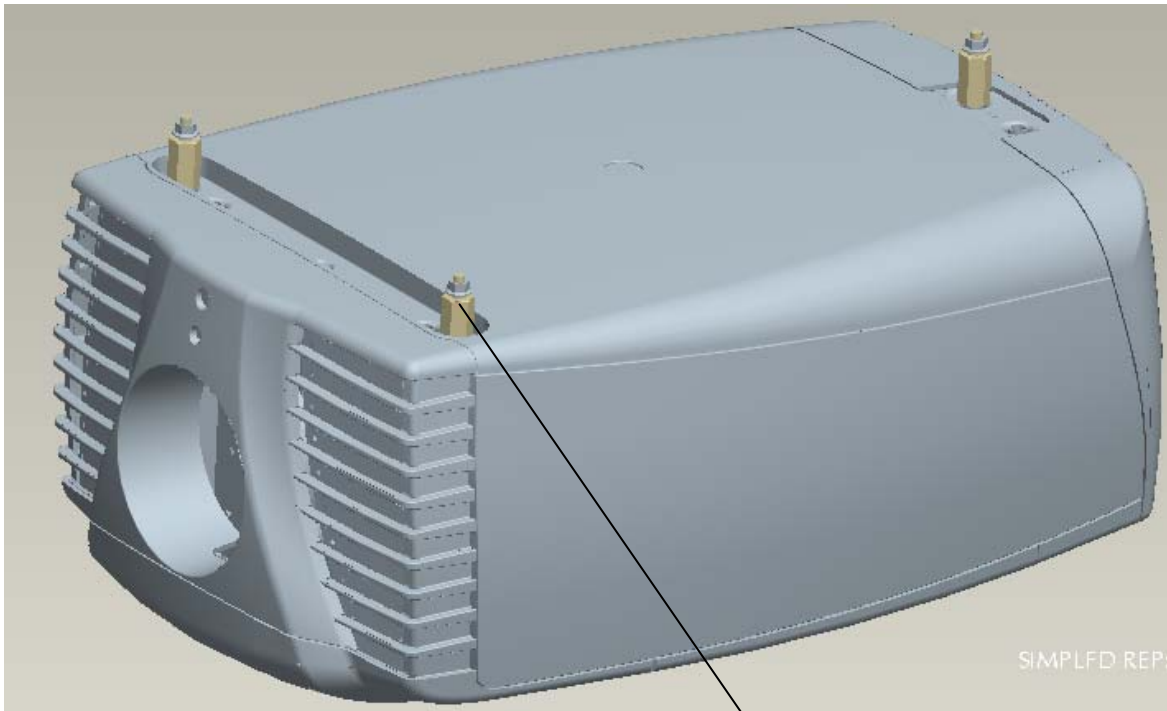
Projector preparation

1. Turn the projector to its back and remove the Feet assembly. Unscrew 3 Plastic feet and remove their Allen head M10 screws. Discard 3 plastic feet r852944 and x head M10 screw.



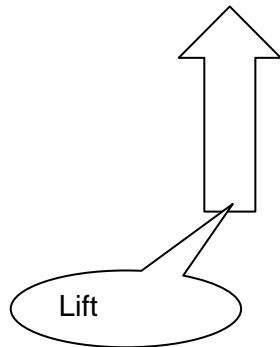
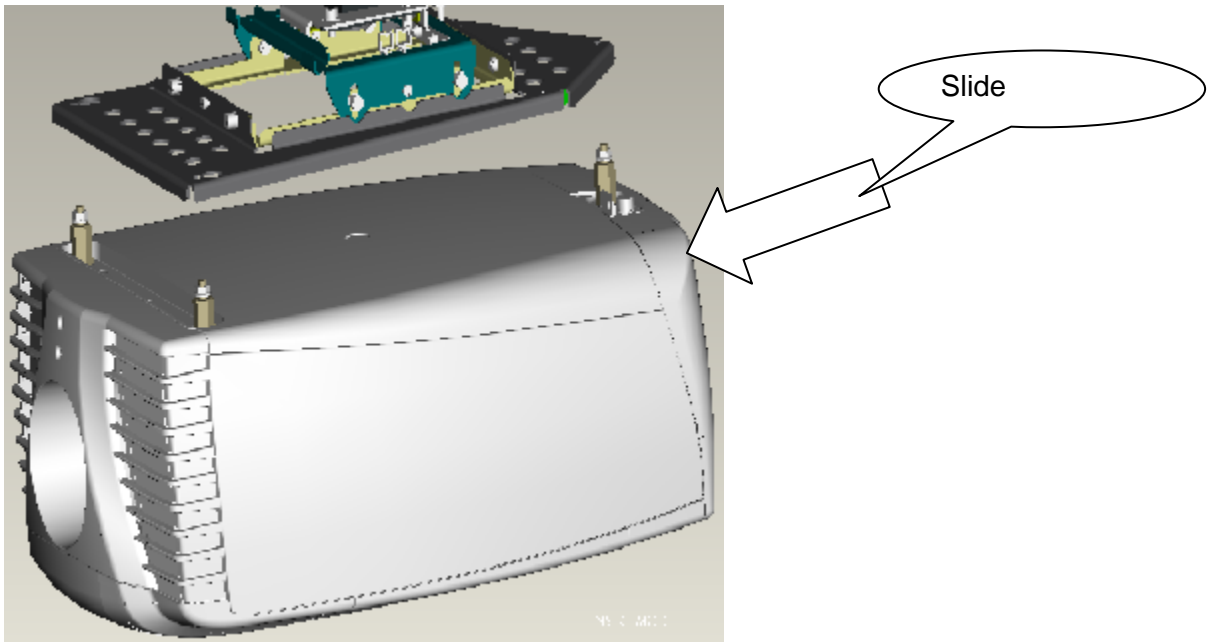
R852944, R852945
& A566050 M10
SCREW, & FEET
SUPPORT

2. Fix the Spacer M10 (r835785) as shown below. For alignment of the Centre distance between the spacers fix the ceiling mount and fix nut M8 B360623, **Do not tight fully** then tight the spacer M10. Remove the Ceiling mount and fix it on the Ceiling.



Washer , Spacer
M10 R835785 and
Flange Nut M8

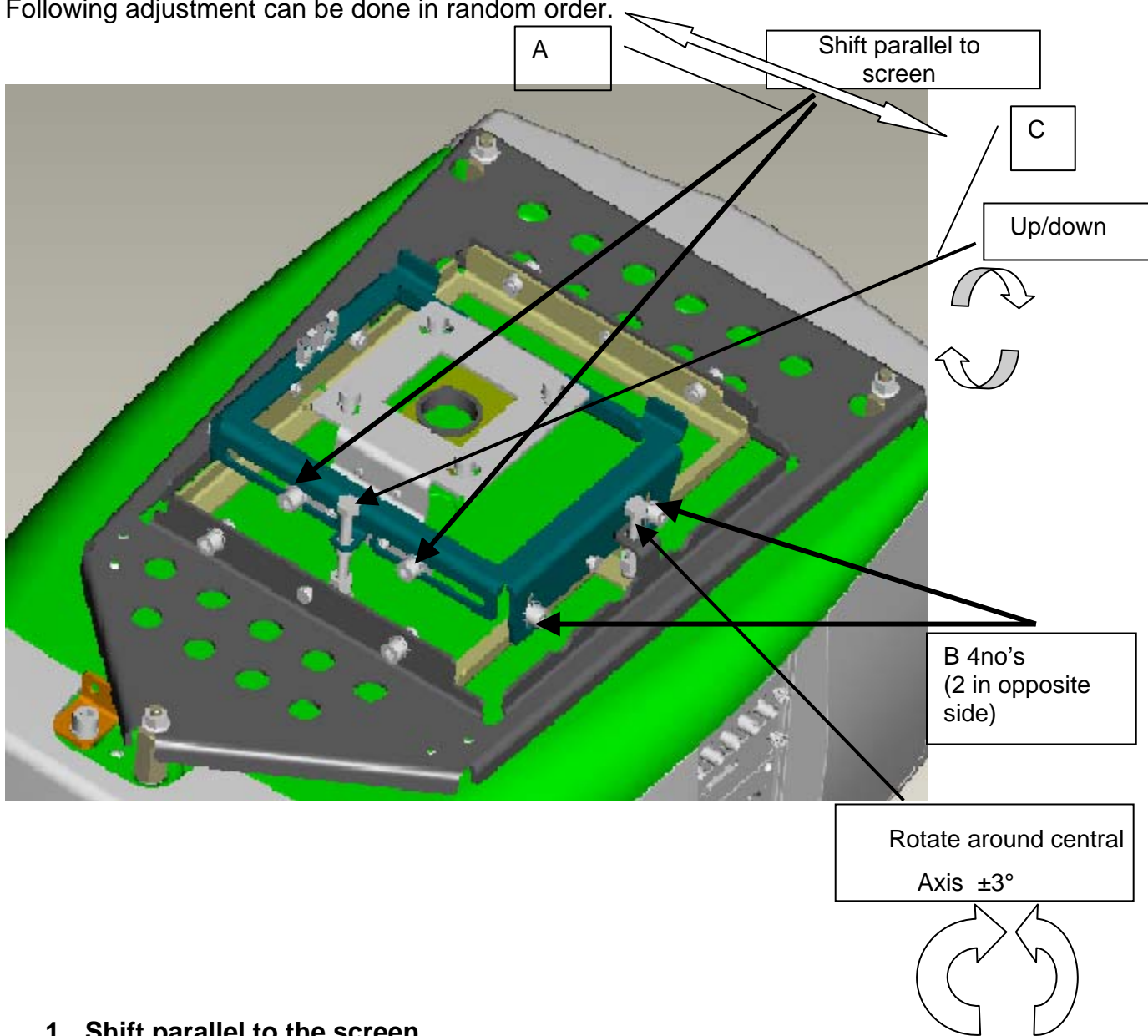
3. Lift and slide the projector assembly into the Ceiling mount. The projector will be located precisely into the ceiling mount base plate after the tightening of 3 M 8 flange Nuts (b360623).



4. Route the Signal cables and Power cord into the cable saddles.
5. Take care of the orientation of safety chain bracket.
6. Fix the one end of safety chain into the projector's chain bracket with the help of the snap hook and the other end to the firm place in the Ceiling.

Adjustments

Following adjustment can be done in random order.

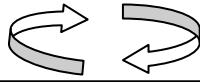


1. Shift parallel to the screen

Loosen the 2 bolts A and move the projector till the projector is aligned. Tighten these 2 bolts to secure the position.

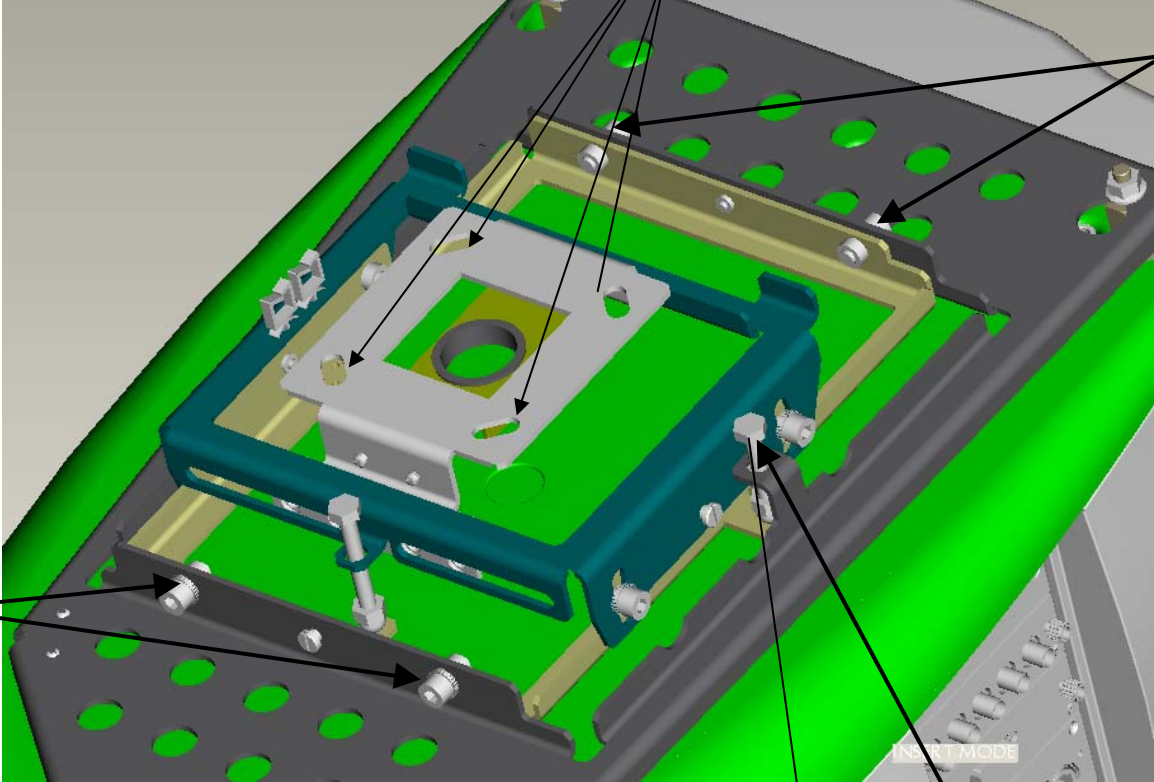
2. Up down Tilt

Loosen the 4 bolts B . Adjust the up/down tilt precisely by moving bolt C clockwise or anti clockwise . Tighten the 4 bolts B to secure the position.



Rotate around
vertical axis $\pm 5^\circ$

E

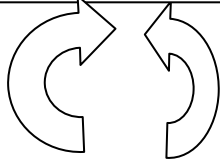


F

F

G

Rotate around central
Axis $\pm 3^\circ$



3. Rotate around central Vertical axis

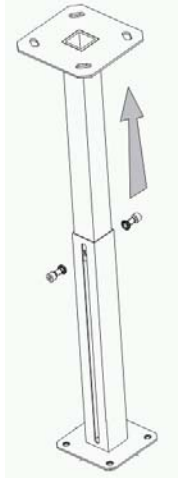
Loosen the 4 bolts E . Rotate/adjust the projector clockwise or anti clockwise.
Tighten the 4 bolts E to secure the position.

4. Rotate around central Horizontal axis

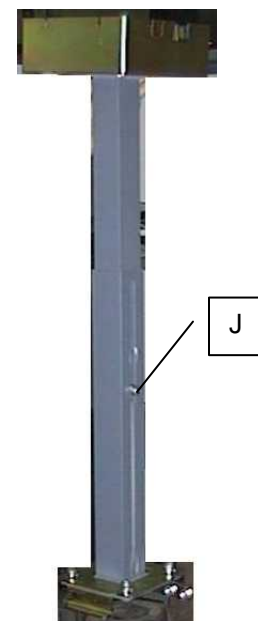
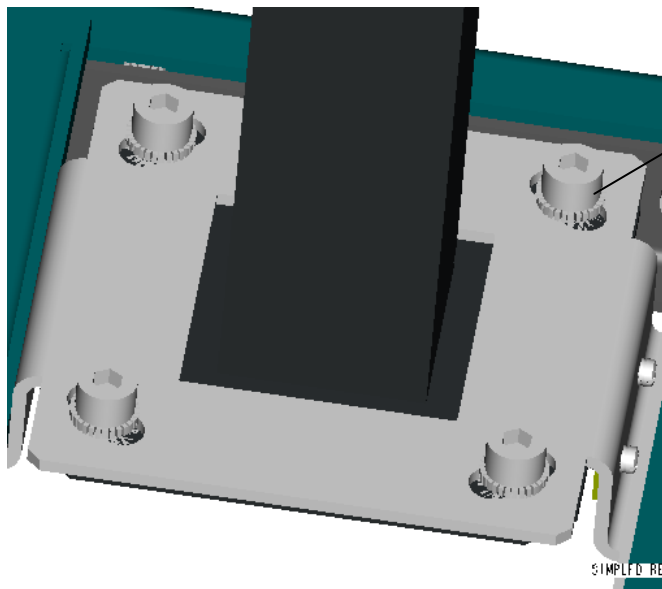
Loosen the 4 bolts F . Adjust the motion precisely by moving bolt G clockwise or anti clockwise. Tighten the 4 bolts F to secure the position.

Mounting the bar with Cable Cover assembly

1. Unscrew the 2 bolts J and slide out the upper part of the Bar. Pass the cable cover into the upper part of the Bar



2. Slide the horizontal shift plate R 826743 into the lower part of the Bar. Fix with 4 M8 bolt K.
3. Slide the upper bar into the lower bar assembly. Remount the 2 previously removed bolt J. Adjust the height to minimum.



4. Routing the Cables

- a. **RGBHV cable preparation:** With the help of PVC tape arrange the connectors in series. Pass the Signal cables and Power cord into cable guide R826761



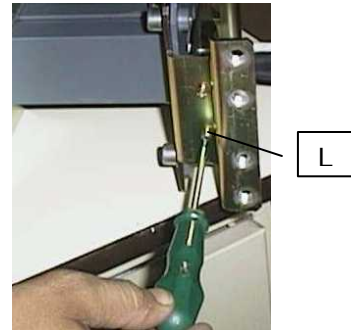
- b. Pass the Signal cables into the IQ bar assembly from top side. Take out the BNC connector (in case of a 5 BNC cable) one by one from bottom side.



- c. Pass the Power cord and the other cables (if any) one by one.

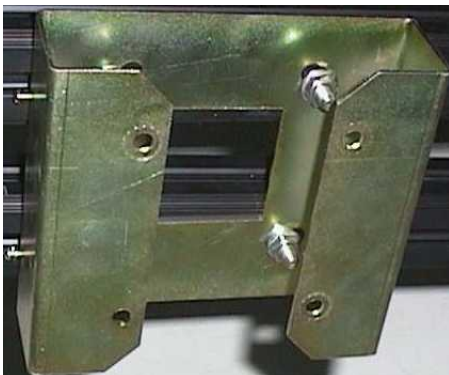


- d. Pass all the cables one by one from cable guide R 826745 and fix the cable guide on to the horizontal shift plate using 2 M3 Screws L.



The cable routing through IQ bar is complete. Adjust the approximate height of the IQ bar and also adjust the length of the cable required at the projector side.

5. Mount the Ceiling Bracket R 826748 on to the ceiling with standard M8 bolt not supplied with the Kit. For marking of the ceiling holes, refer the Installation manual of the Ceiling Mount of CV 120 (R5973715)

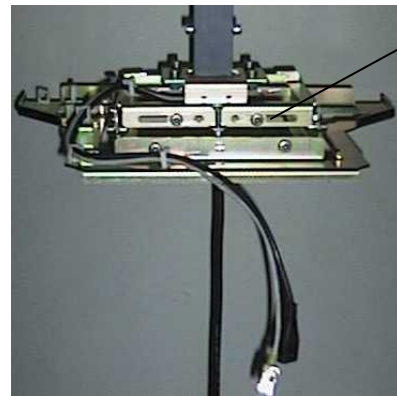
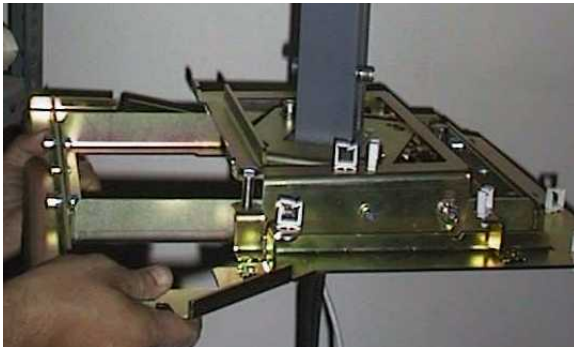


6. Hang on the IQ bar and cable routed assembly. Fix with 4 M8 bolt along with washer M.



M

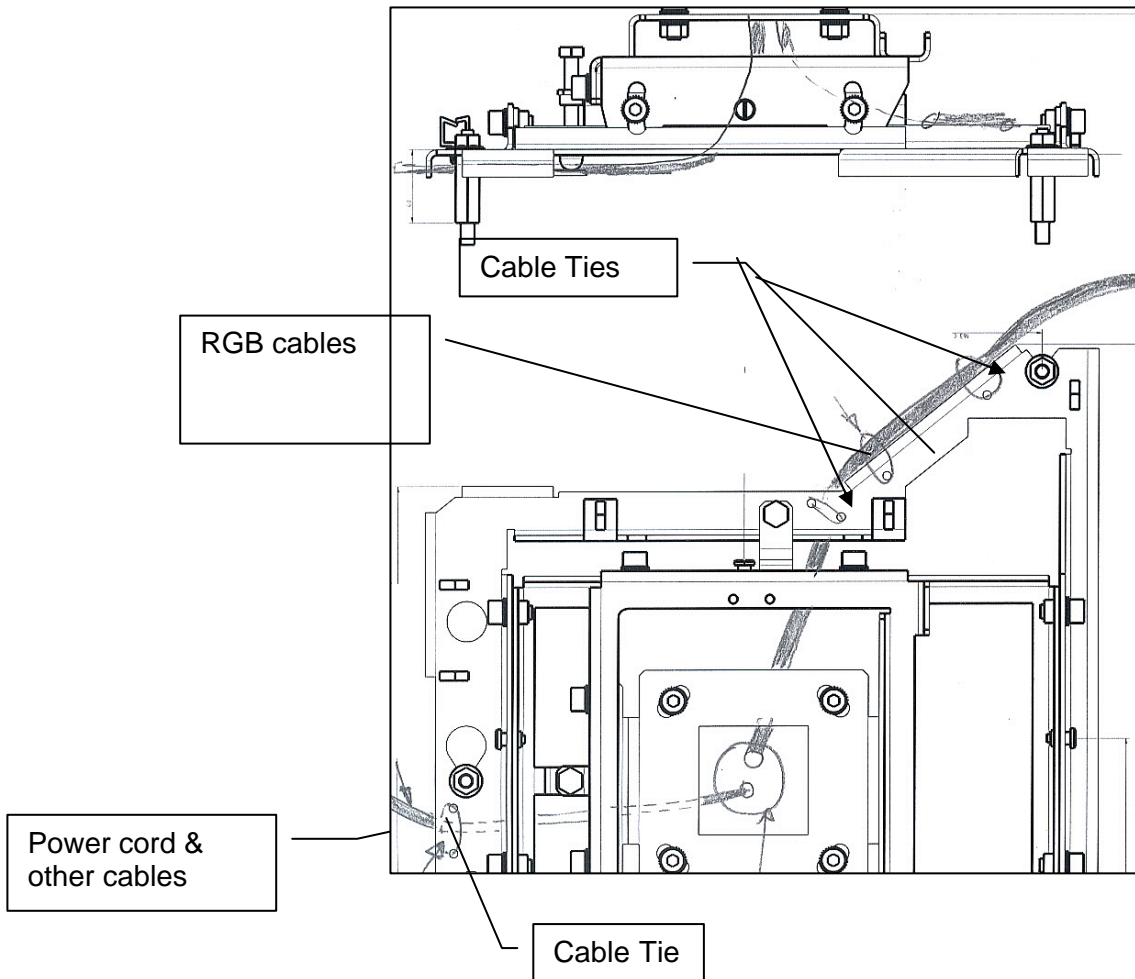
7. Mount the Ceiling mount assembly on to the horizontal shift plate by twisting and then lifting up. Fix the 2 M8 Bolt A.



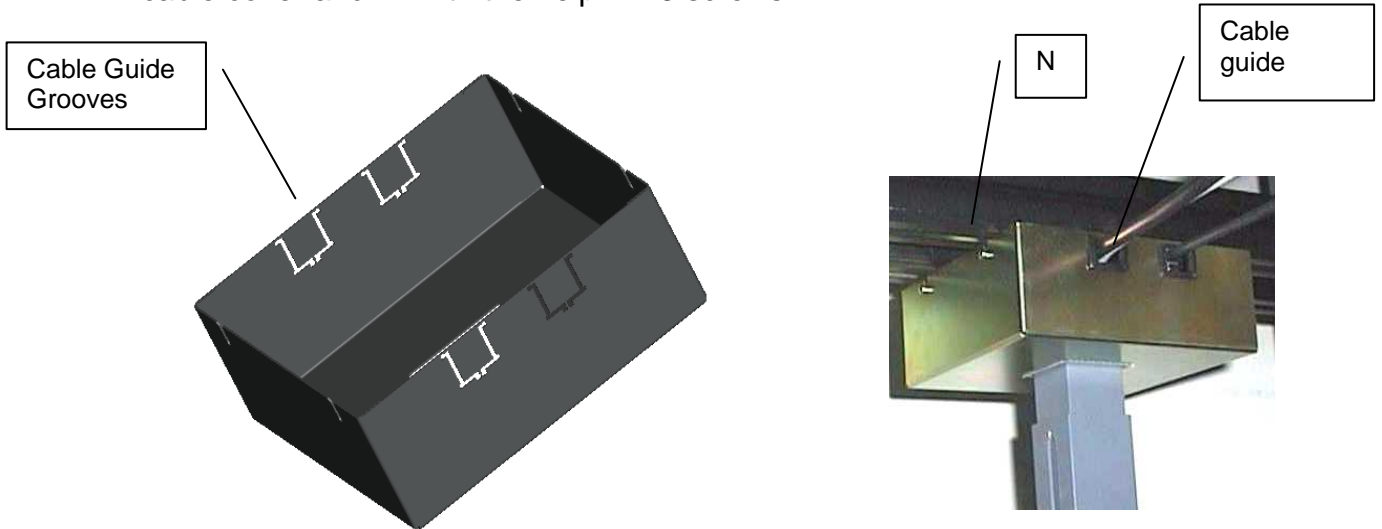
A

8. Route the Power cord to the back and Signal cables to the front.

There is also an option to route the cable from inside the Ceiling mount using cable ties and guiding holes on the Ceiling mount base as shown below.

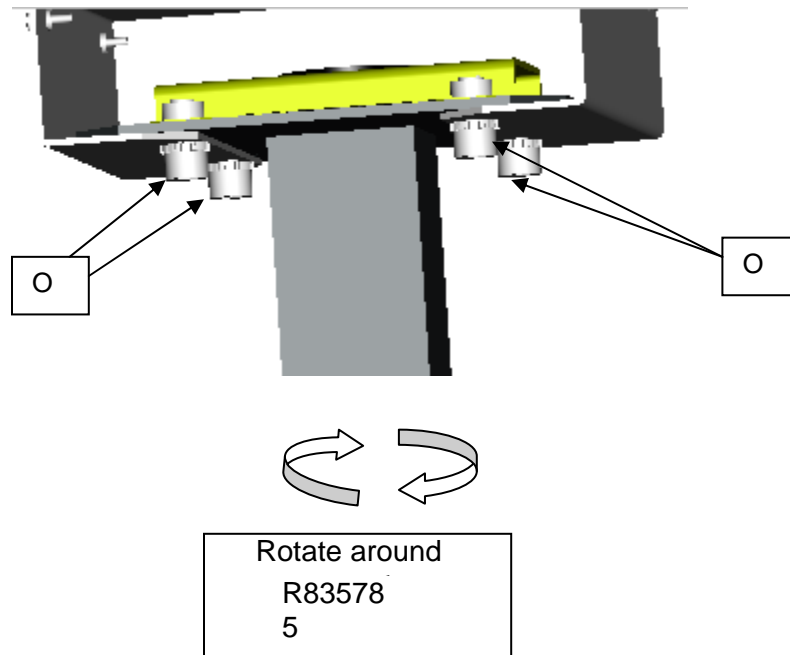


Break the cable guide grooves on the cable cover as per the direction and location of the input cables and power cord at customer site/room. Lift the cable cover and fix with the help 4 M3 screws N



9. The adjustment procedure for the rotation around central vertical axis can also be done as explained below.

Loosen the 4 M3 screws N of cable cover and slide it down word.
Loosen the 4 bolts O. Rotate /adjust the projector clockwise or anti clockwise. Tighten the 4 bolts O to secure the position. Slide up the cable cover and fix 4 M3 screws N.



10. fix the one end of safety chain into the projector's Eye bolt and the other end to the firm place in the ceiling.