

# ANI-5MFS

5x1 4K2K@60Hz PRESENTATION SWITCHER W/  
HDMI & HDBASET™ OUTPUT





## SAFETY INFORMATION



1. To ensure the best results from this product, please read this manual and all other documentation before operating your equipment. Retain all documentation for future reference.
2. Follow all instructions printed on unit chassis for proper operation.
3. To reduce the risk of fire, do not spill water or other liquids into or on the unit, or operate the unit while standing in liquid.
4. Make sure power outlets conform to the power requirements listed on the back of the unit. Keep unit protected from rain, water and excessive moisture.
5. Do not attempt to clean the unit with chemical solvents or aerosol cleaners, as this may damage the unit. Dust with a clean dry cloth.
6. Do not use the unit if the electrical power cord is frayed or broken. The power supply cords should be routed so that they are not likely to be walked on or pinched by items placed upon or against them, paying particular attention to cords and plugs, convenience receptacles, and the point where they exit from the appliance.
7. Do not force switched or external connections in any way. They should all connect easily, without needing to be forced.
8. Always operate the unit with the AC ground wire connected to the electrical system ground. Precautions should be taken so that the means of grounding of a piece of equipment is not defeated.
9. AC voltage must be correct and the same as that printed on the rear of the unit. Damage caused by connection to improper AC voltage is not covered by any warranty.
10. Turn power off and disconnect unit from AC current before making connections.
11. Never hold a power switch in the "ON" position.
12. This unit should be installed in a cool dry place, away from sources of excessive heat, vibration, dust, moisture and cold. Do not use the unit near stoves, heat registers, radiators, or other heat producing devices.
13. Do not block fan intake or exhaust ports. Do not operate equipment on a surface or in an environment which may impede the normal flow of air around the unit, such as a bed, rug, carpet, or completely enclosed rack. If the unit is used in an extremely dusty or smoky environment, the unit should be periodically "blown free" of foreign dust and matter.
14. To reduce the risk of electric shock, do not remove the cover. There are no user serviceable parts inside. Refer all servicing to qualified service personnel. There are no user serviceable parts inside.
15. When moving the unit, disconnect input ports first, then remove the power cable; finally, disconnect the interconnecting cables to other devices.
16. Do not drive the inputs with a signal level greater than that required to drive equipment to full output.
17. The equipment power cord should be unplugged from the outlet when left unused for a long period of time.
18. Save the carton and packing material even if the equipment has arrived in good condition. Should you ever need to ship the unit, use only the original factory packing.
19. Service Information Equipment should be serviced by qualified service personnel when:
  - A. The power supply cord or the plug has been damaged.
  - B. Objects have fallen, or liquid has been spilled into the equipment.
  - C. The equipment has been exposed to rain.
  - D. The equipment does not appear to operate normally, or exhibits a marked change in performance.
  - E. The equipment has been dropped, or the enclosure damaged.

**▶ CONTENTS**

INTRODUCTION & CONTENTS .....1  
 FEATURES .....2  
 SPECIFICATIONS .....3  
 FRONT PANEL .....4  
 BACK PANEL .....5  
 RECEIVER .....6  
 REMOTE CONTROL .....7  
 IR OPERATIONS .....8  
 AUTO-SWITCHING FUNCTION & VGA/YBPBR/CVBS INPUT .....9  
 CONNECTION OF MICROPHONE .....10  
 OPERATIONS OF RS-232 CONTROL .....11  
 WEBGUI CONTROL .....12  
 OSD MENU .....13  
 CONNECTION DIAGRAM .....15

**INTRODUCTION**

The ANI-5MFS 5x1 4K2K@60Hz presentation switcher supports (5) inputs including (3) HDMI ports, (1) VGA (YPbPr/CVBS) and (1) DisplayPort, scaling to HDMI and HDBaseT™ outputs (Mirrored). It offers flexibility application of audio which includes unbalanced audio, MIC In and line out. The audio processor offers auto-mixer and auto-gain control to mix or reduce background audio in order to enhance a major audio source. The system could be controlled and configured easily via Telnet, Web GUI, IR remote and RS-232. This switcher is a suitable solution for presentation purpose at classroom and conference room. This product has a 3 year warranty.

**PACKAGE CONTENTS**

Before attempting to use this unit, please check the packaging and make sure the following items are contained in the shipping carton:

- ANI-5MFS 5x1 4K2K@60Hz Presentation Switcher
- HDBaseT™ Receiver
- (2) Mounting ears
- Remote Control Unit
- (2) IR Receiver Cable (with carrier wave)
- (2) IR Emitter Cable
- 24V/1A Power Adapter
- 3RCA (Female) to D-SUB (Male) Cable
- Users Guide

**SAFETY PRECAUTIONS**

Please read all instructions before attempting to unpack, install or operate this equipment and before connecting the power supply. Please keep the following in mind as you unpack and install this equipment:

- Always follow basic safety precautions to reduce the risk of fire, electrical shock and injury to persons.
- To prevent fire or shock hazard, do not expose the unit to rain, moisture or install this product near water.
- Never spill liquid of any kind on or into this product.
- Never push an object of any kind into this product through any openings or empty slots in the unit, as you may damage parts inside the unit.
- Do not attach the power supply cabling to building surfaces.
- Use only the supplied power supply unit (PSU). Do not use the PSU if it is damaged.
- Do not allow anything to rest on the power cabling or allow any weight to be placed upon it or any person walk on it.
- To protect the unit from overheating, do not block any vents or openings in the unit housing that provide ventilation and allow for sufficient space for air to circulate around the unit.

**DISCLAIMERS**

The information in this manual has been carefully checked and is believed to be accurate. We assume no responsibility for any infringements of patents or other rights of third parties which may result from its use.

We assume no responsibility for any inaccuracies that may be contained in this document. We make no commitment to update or to keep current the information contained in this document.

We reserve the right to make improvements to this document and/or product at any time and without notice.

**COPYRIGHT NOTICE**

No part of this document may be reproduced, transmitted, transcribed, stored in a retrieval system, or any of its part translated into any language or computer file, in any form or by any means — electronic, mechanical, magnetic, optical, chemical, manual, or otherwise — without the express written permission and consent.

© Copyright 2017. All Rights Reserved.  
 Version 1.0 JUNE 2017

**TRADEMARK ACKNOWLEDGMENTS**

All products or service names mentioned in this document may be trademarks of the companies with which they are associated.

## FEATURES

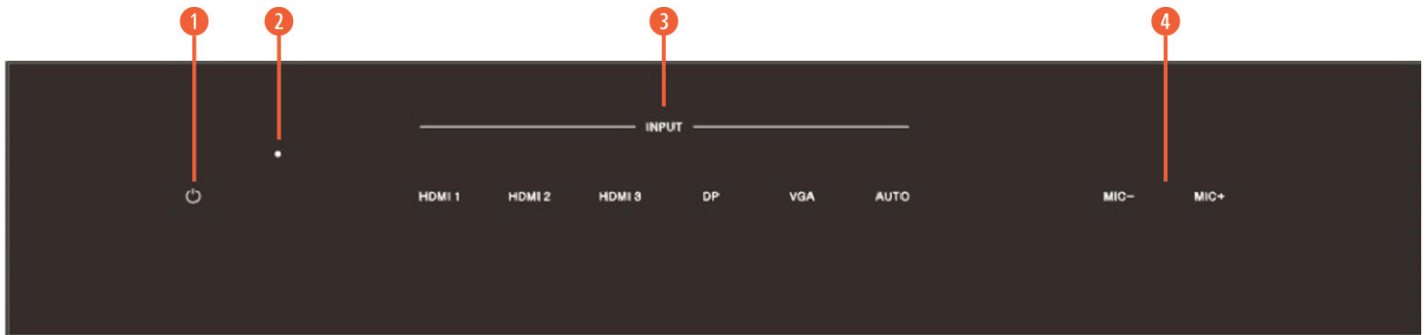
---

- HDMI 2.0b, HDCP 2.2 compliant
- (3) HDMI, (1) VGA (YPbPr/CVBS), (1) DisplayPort, (1) MIC In, (4) Unbalanced Audio Input
- HDMI and HDBaseT™ ~230ft (70M) outputs (Mirrored)
- HDMI/DP video resolutions up to 4K2K@60Hz (4:4:4), 4K2K@30Hz, 1080p@120Hz
- VGA resolutions up to 1920x1200@60Hz
- Output resolutions up to 4K2K@30Hz
- Support automatic and manual switching modes
- Supports EDID management
- Supports pass-through of PCM 2CH
- Touch Panel button, Web GUI, IR remote, Desk Plate and RS-232 control

## SPECIFICATIONS

- **HDMI Compliance:** HDMI 2.0b
- **DP Compliance:** Display Port 1.2a
- **HDCP Compliance:** HDCP 2.2 and HDCP 1.4
- **Video Input Resolutions:**
  - **HDMI/Display Port:** Up to 4K2K@50/60Hz (4:4:4)
  - **CVBS:** PAL/NTSC 3.58/NTSC 4.43/SECAM/PAL M/PAL N
  - **YPBPR:** 480i to 1080p
  - **VGA:** 640x480/60 to 1920x1200/60
- **HDMI/HDBaseT™ Output Resolutions:** 4K2K@30Hz, 4K2K@25Hz, 1920x1080p@60Hz, 1920x1080p@50Hz, 1280x720p@60Hz, 1280x720p/50Hz, 1024x768@60Hz, 1280x800@60Hz, 1360x768@60Hz, 1400x1050@60Hz, 1680x1050@60Hz, 1920x1200@60Hz
- **Audio Formats:** LPCM 2.0CH
- **ESD Protection:** Human body model: ±8kV (air-gap discharge) & ±4kV (contact discharge)
- **Input Ports:**
  - (3) HDMI Type A (19-pin female)
  - Display Port (female)
  - VGA (female)
  - MIC Input (3-pin phoenix port)
  - (5) Stereo inputs (3-pin phoenix port)
- **Output Ports:**
  - HDMI Output Type A (19-pin female)
  - HDBaseT™ Out (RJ-45)
  - Stereo Output (3-pin phoenix port)
- **Control Interfaces:**
  - IR In (3.5mm mini jack)
  - IR Out (3.5mm mini jack)
  - Contact In (6-pin phoenix port)
  - RS-232 (3-pin phoenix port)
  - Web GUI (RJ-45)
  - USB Type A (5-pin female)
- **Dimensions (WxDxH):** 5.9 x 8.7 x 1.7 in (150x220x44mm)
- **Weight:** 2.75lb/1250g
- **Housing:** Metal / Black
- **Operating Temperature:** 0°C~40°C/32°F~104°F
- **Storage Temperature:** -20°C~60°C/-4°F~140°F
- **Relative Humidity:** 20~90%RH (non-condensing)
- **Power Consumption:** 9W (Main unit) / 18W (Main unit + HDBaseT™ Receiver)
- **Power Supply:** DC 24V/1A Adaptor (US/EU standards, CE/FCC/UL certified)

## FRONT PANEL



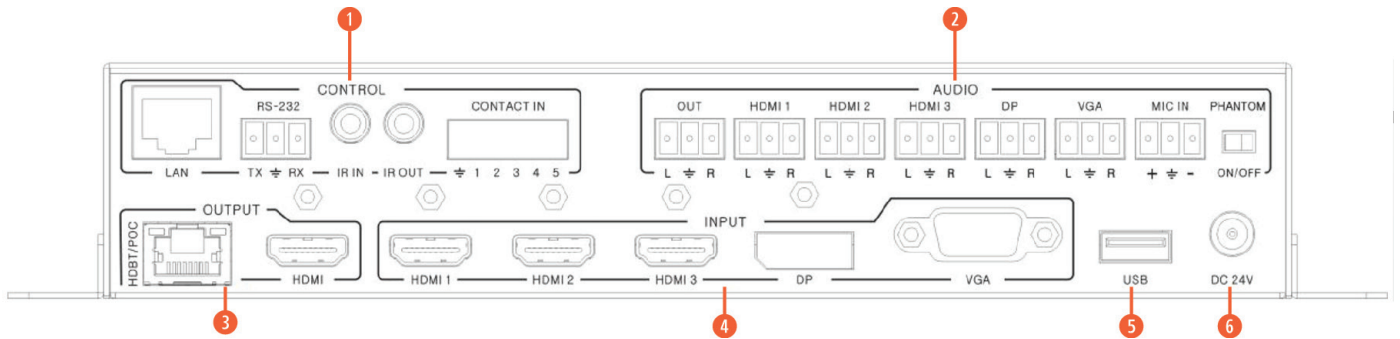
**① POWER BUTTON AND INDICATOR:** When this device is switched to the standby mode by pressing Power button, the indicator will illuminate red. When switching to power on mode, the indicator will illuminate blue.

**② IR WINDOW:** Receiving IR signal from remote control.

**③ INPUT SOURCE & AUTO BUTTONS:** Press these buttons for source selection. The active source will be illuminated to corresponding indicators on the front panel. AUTO is for auto-switching or manual-switching mode selection, when the indicator illuminates blue, the device switch to auto-switching mode, when the indicator turns off, the device switch to manual-switching mode.

**④ MIC VOLUME BUTTONS:** Press these buttons for adjust the MIC input volume.

BACK PANEL



1 CONTROL PORTS:

- **LAN:** This port is the link for Web GUI control; connect to an active Ethernet link with an RJ-45 terminated cable.
- **RS-232:** Serial control port, 3P captive screw connector, connects with a control device (such as a computer) to control the switcher or other device connected with the HDBaseT™ receiver.
- **IR IN:** Connects with IR receiver cable (with carrier wave), to receive IR signals sent by the IR remote or remote controller of other input/output device.
- **IR OUT:** Connects with IR emitter cable used for controlling the local source device or the switcher.
- **CONTACT IN:** This input control reserving for direct source input selection. Connect ground pin (mark as on panel) with following pin number for individual source selection.

PIN NUMBER	SOURCE
Pin 1	HDMI1
Pin 2	HDMI2
Pin 3	HDMI3
Pin 4	Display Port
Pin 5	VGA/YPbPr/CVBS

2 AUDIO PORTS:

- **OUT:** The audio comes from the input audio corresponding to the selected video source and mixed with MIC audio. Connects with amplifier for audio source broadcasting.
- **HDMI1/2/3/DP:** Select the external analog audio on OSD and insert the audio to HDMI1/2/3/DP video source then output to display and analog audio output port.
- **VGA:** The external analog audio input for VGA input.
- **MIC IN:** Plug microphone in for audio source output.
- **PHANTOM ON/OFF:** Arrange the slide switch to “OFF” for electrets condenser microphone/ dynamic microphones or “ON” for professional 48V phantom microphone.

3 OUTPUT PORTS

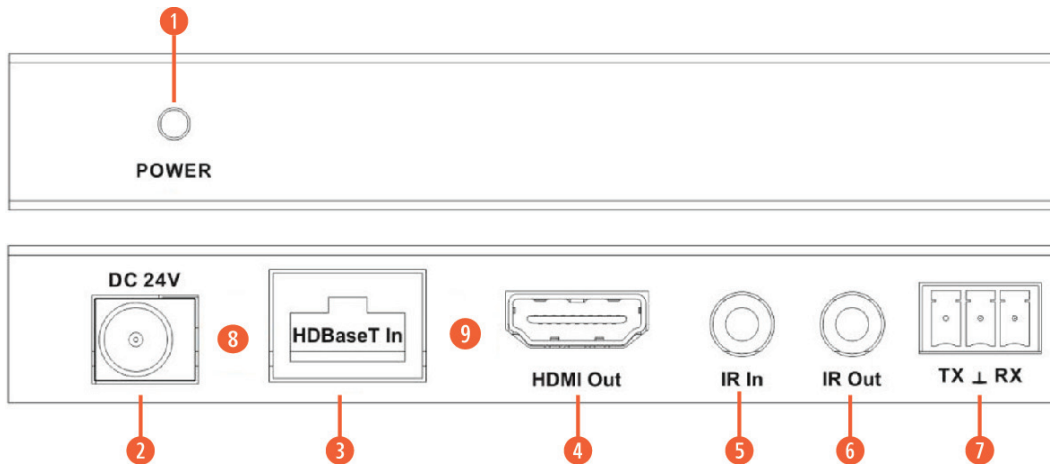
- **HDBASET™ OUT:** Connects with compatible Receiver for video and / or audio output. Support 24V POC function.
- **HDMI OUT:** Connect to an HDMI display or AV Receiver for video and/or audio output.

4 **INPUT PORTS:** These video input ports include (3) HDMI inputs, (1) Display Port input & (1) VGA input. VGA port support VGA, YPbPr and CVBS format. Factory default is VGA format.

5 **USB PORT:** USB port connects with USB flash disk or other storage that contains the software update file to update the system firmware.

6 **POWER:** Plug the 24V DC power supply into the unit and connect the adaptor to an AC outlet.

## HDBASET™ RECEIVER

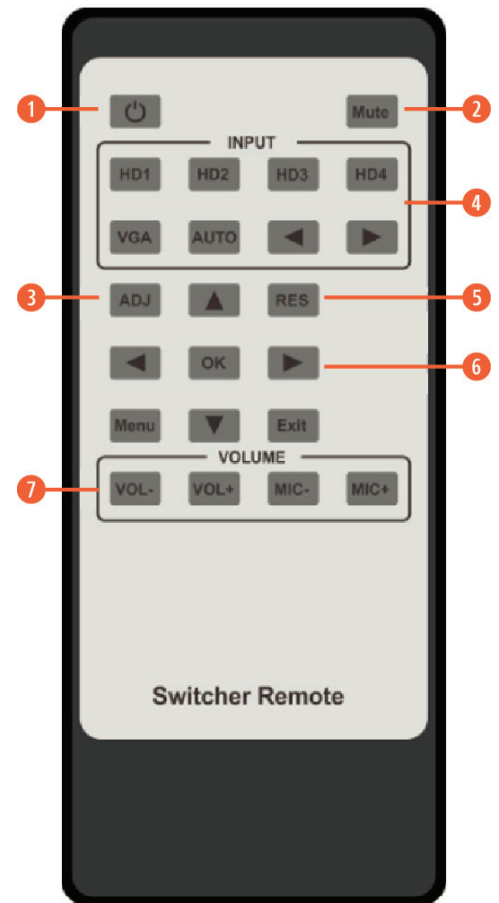


- 1 POWER:** This LED illuminates when the device is connected with power supply.
- 2 DC 24V:** Plug the 24V DC power supply into the unit.
- 3 HDBASET™ IN:** Standard HDBaseT™ signal input port. Connect HDBaseT™ transmitter with a UTP cable following the standard of direct interconnection method.
- 4 HDMI OUT:** HDMI output port. This slot is where you connect the HDTV or monitor with HDMI cable.
- 5 IR IN:** Channel 1 IR Receiver. Connect with Wideband IR Rx.
- 6 IR OUT:** Channel 2 IR Transmitter. Connect with Wideband IR Tx.
- 7 RS-232:** Phoenix jack provide Serial port control signal from receiver or to receiver.
- 8 CONNECTION SIGNAL INDICATOR LAMP**
- 9 DATA SIGNAL INDICATOR LAMP**
- **ILLUMINATE:** The HDMI signal is with HDCP.
  - **FLASHING:** The HDMI signal is without HDCP.
  - **OFF:** No HDMI signal.



## REMOTE CONTROL

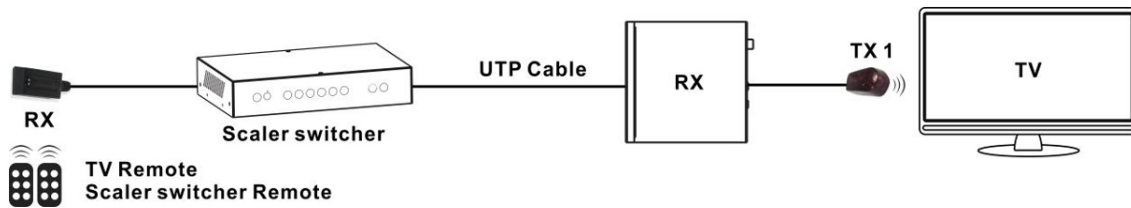
- ① **POWER:** Press this button to power on the switcher or set it to standby mode.
- ② **MUTE:** Press this button for mute or un-mute the audio output.
- ③ **ADJ:** Press this button for operate VGA input auto adjustment function.
- ④ **INPUTS:** Press these buttons for select the input sources.
- ⑤ **RES:** Press this button to select HDMI output resolution. *(Press and hold 5 seconds or more, the HDMI output resolution will reset to 720p60Hz.)*
- ⑥ **MENU OPERATION BUTTONS:**
  - **MENU:** Press to enter in OSD menu.
  - **EXIT:** Press to exit OSD menu.
  - **OK:** Confirm button.
  - **UP/DWON/LEFT/RIGHT BUTTON:** OSD value setting.
- ⑦ **VOL -/+:** Decrease or increase audio output volume (HDMI, HDBaseT™, and Audio out ports).
- **MIC -/+:** Decrease or increase MIC input audio volume.



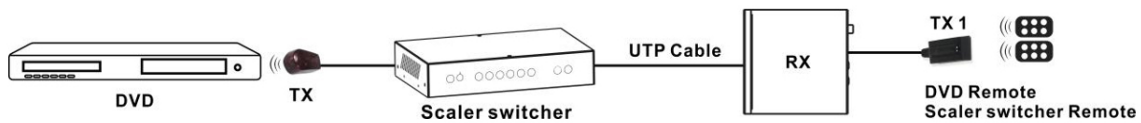
IR OPERATIONS

As IR signals can be transmitted bi-directionally between the switcher and the HDBaseT receiver, it is able to use the IR remote to control the switcher or HDMI source devices.

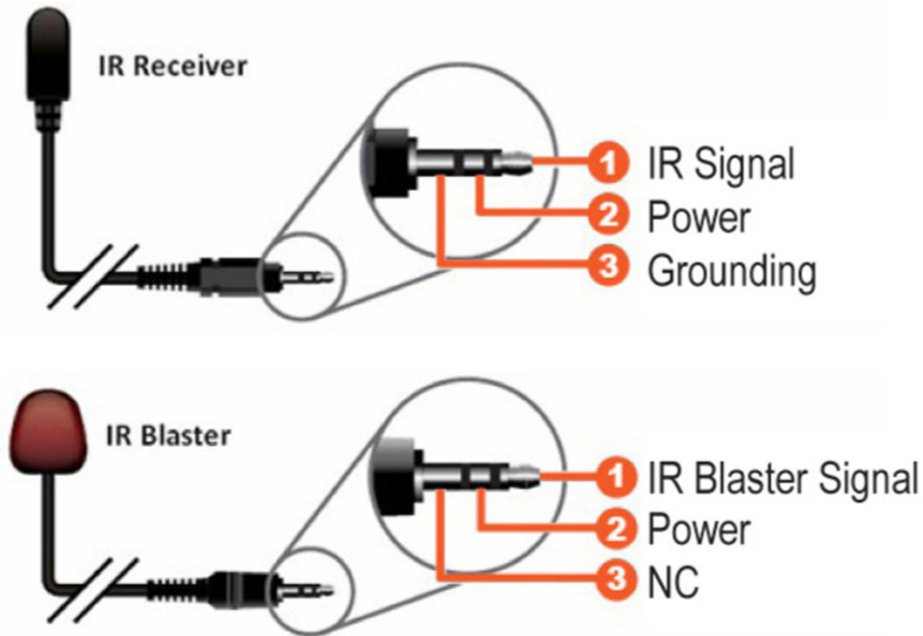
① **CONTROL FAR-END DEVICE LOCALLY:** To control the switcher or remote display device by using corresponding remote control.



② **CONTROL LOCAL DEVICE FROM REMOTE:** To control the switcher or local source device by using the corresponding remote control.



③ **IR (20KHZ-60KHZ) CABLE INTRODUCTION:**



**AUTO-SWITCHING FUNCTION**

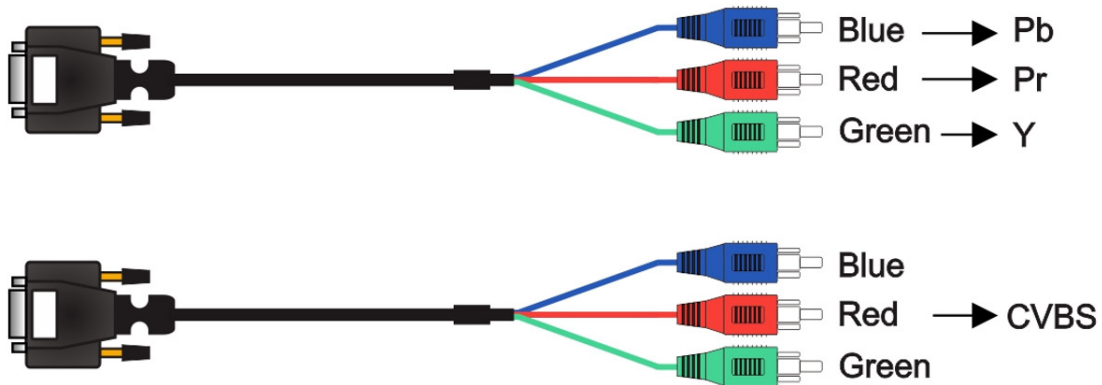
The switcher has auto-switching and manual-switching modes. When the user select auto-switching mode, It will follows the following principles:

- ① **NEW INPUT PRINCIPLE:** Once a new input signal is detected, the switcher will switch to this new signal automatically.
- ② **POWER REBOOTING PRINCIPLE:** The switcher offers the function to remember the signal last used before power off. Once rebooted, it will automatically enter auto-switching mode, and then detect all inputs and memorize their connection status for future reboots. If the last used input signal is still available, then it will choose that signal. If not, it will detect all input signals with priority on **HDMI1>HDMI2>HDMI3>DP>VGA** (YPbPr/CVBS).
- ③ **SIGNAL REMOVING PRINCIPLE:** Once the current signal is removed, the switcher will detect all input signals with priority on **HDMI1>HDMI2>HDMI3>DP>VGA** (YPbPr/CVBS). It will transfer the first signal detected to the output.

**NOTICE:** Auto-switching function works only when there is a new input signal or if an input signal is removed.

**VGA/YPBPR/CVBS INPUT**

The VGA input port is a multiple format port. It supports VGA/YPbPr/CVBS input signal. The switcher will auto detect the input signal type and format. The user can use the convert cable for YPbPr or CVBS signal input.

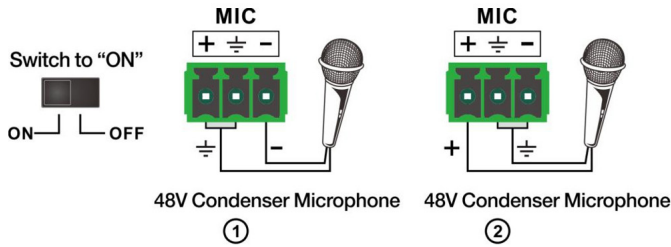


CONNECTION OF MICROPHONE

The switcher provides one 2-level microphone input to accommodate different microphone input modes, including 48V phantom power mode and MIC mode. When switched to “ON” (It has a good frequency characteristic, high input impedance and high sensitivity in this mode), the MIC input will provide a 48V phantom power. This is only used for 48V condenser microphones.

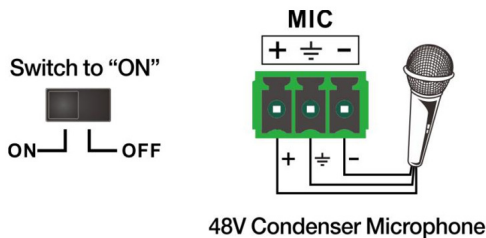
① UNBALANCED CONNECTION:

“+” and “⊕” connect to ground, and “-” connects to signal. “-” and “⊕” connect to ground, and “+” connects to signal.



② BALANCED CONNECTIONS:

“+” connects to positive, “-” connects to negative and “⊕” to ground.

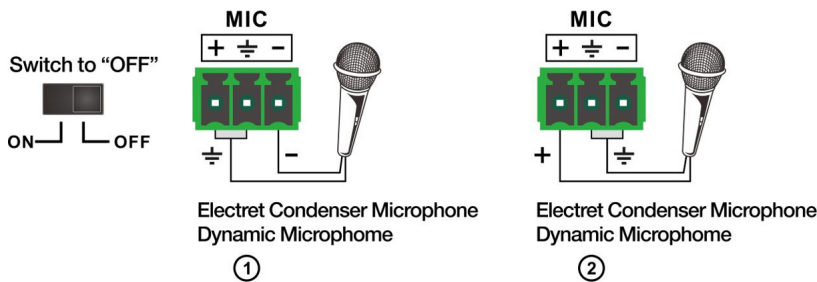


When switched to “OFF” (It has a low frequency characteristics, and wide frequency response in this mode), the microphone input is used for connecting dynamic microphones and electrets condenser microphone.

There are 2 different connections:

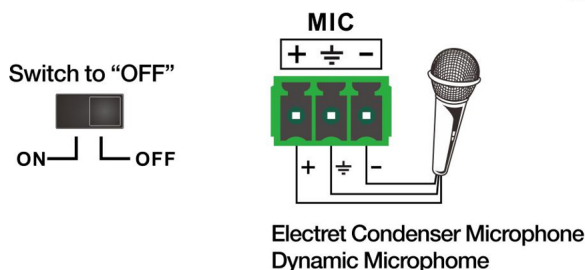
① UNBALANCED CONNECTION:

“+” and “⊕” connect to ground, and “-” connects to signal. “-” and “⊕” connect to ground, and “+” connects to signal.



② BALANCED CONNECTIONS:

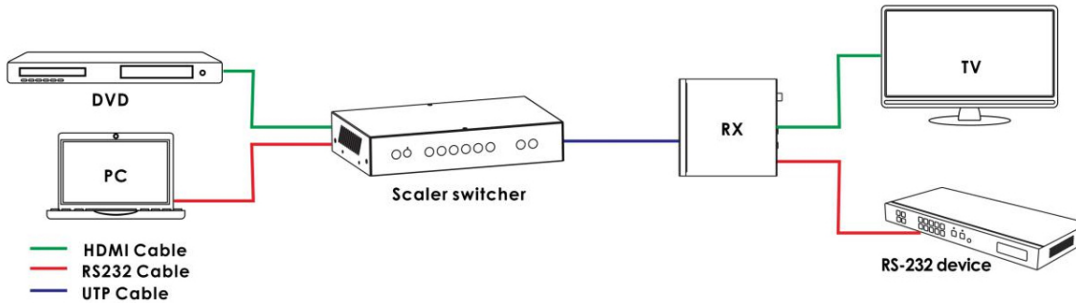
“+” connects to positive, “-” connects to negative and “⊕” connects to ground.



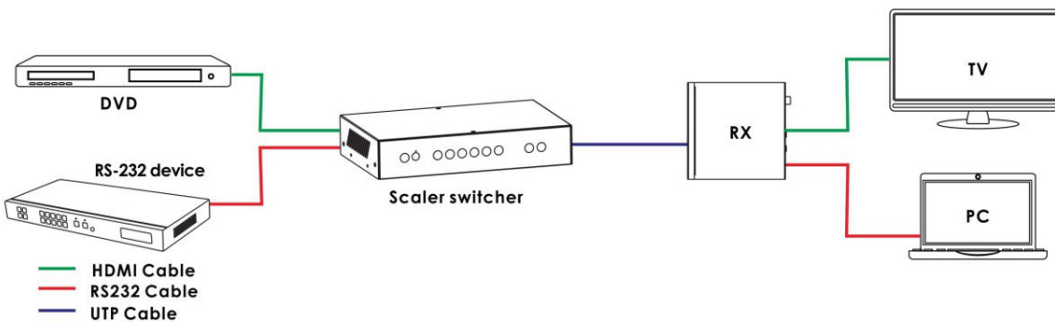
OPERATIONS OF RS-232 CONTROL

As RS-232 can be transmitted bi-directionally between the scaler and the HDBaseT™ receiver, it is able to control a third party RS-232 device locally or control the compact scaler bi-directionally.

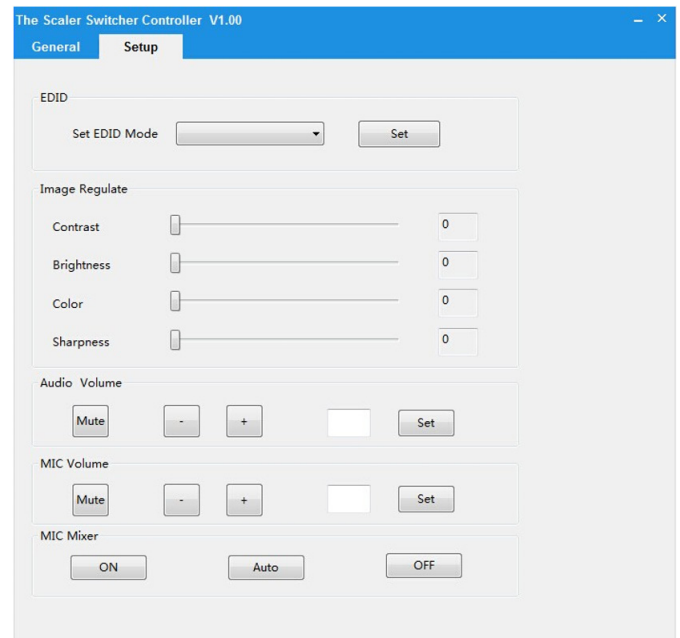
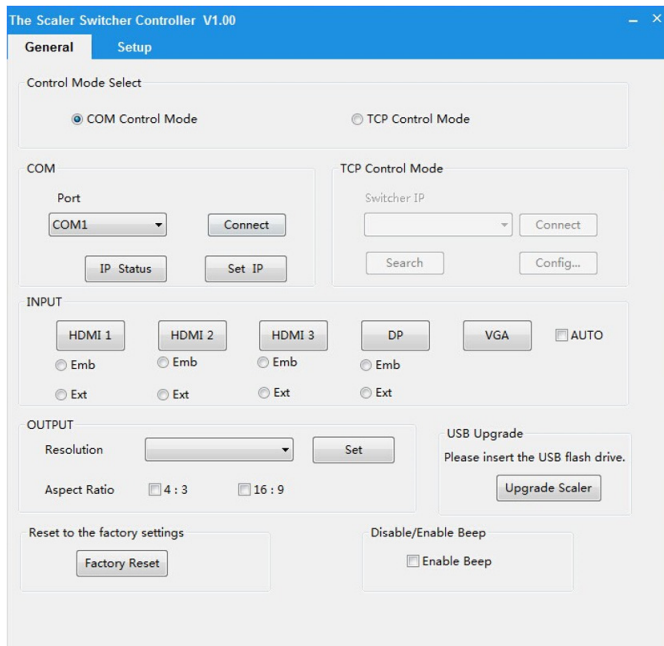
1 CONTROL THE SWITCHER OR 3RD PARTY DEVICE FROM LOCAL



2 CONTROL THE SWITCHER OR 3RD PARTY DEVICE FROM REMOTE RECEIVER



3 RS-232 CONTROLLER: Please connect the switcher with input devices and output device needed, then connect it with a computer that is installed with RS-232 control software. Double-click the software icon to run this software on your computer. The interface of the control software is showed as below:



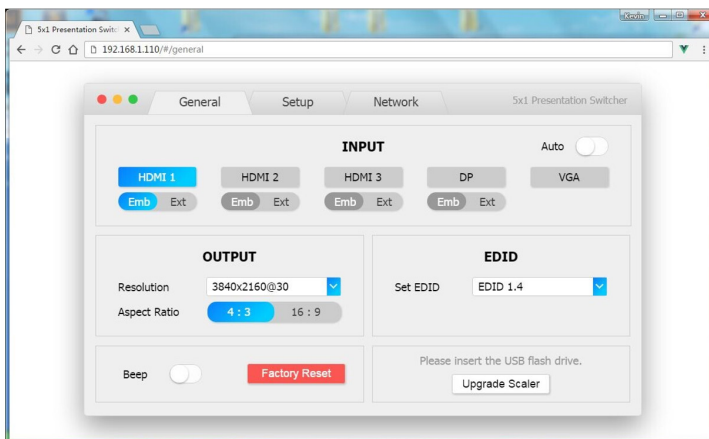
WEBGUI CONTROL

The switcher can be controlled via Web browser, which contains General, Setup and Network Settings. After the active Ethernet link with a RJ-45 terminated cables are connected, the IP address is obtained and the IP address is entered in the Web browser, the switcher can be controlled. If IP address is unknown, there are 2 methods to obtain the IP address.

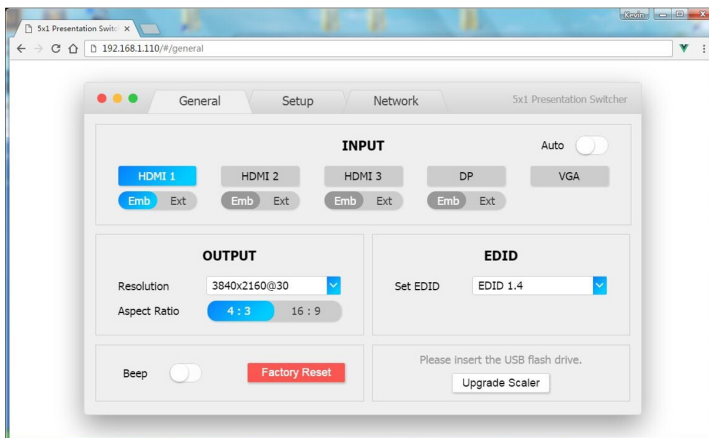
1. Obtain the IP address and port number via the information from the MENU>Network OSD by the remote control.
2. Obtain the IP address and port number via RS-232 Control.

**FOR EXAMPLE:** The obtained IP address is 192.168.1.100 and port number is 8000. Input http://192.168. 1.100 in the address bar of the web browser.

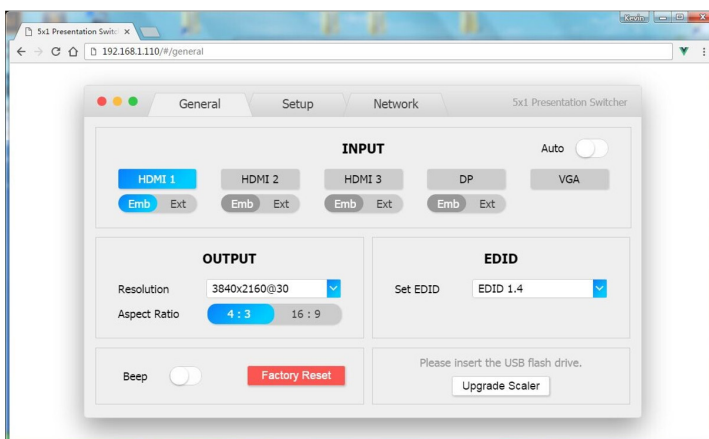
1 GENERAL



2 SETUP



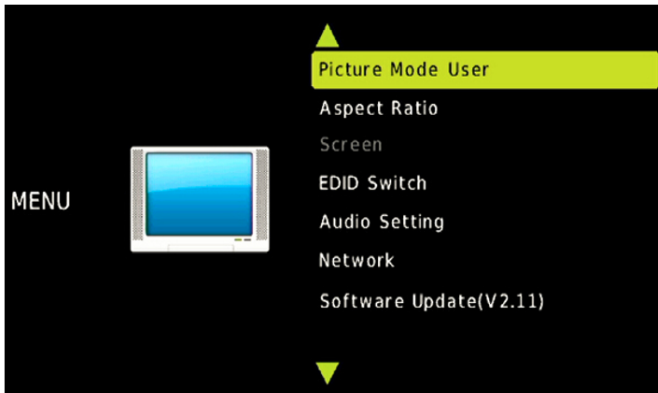
3 NETWORK



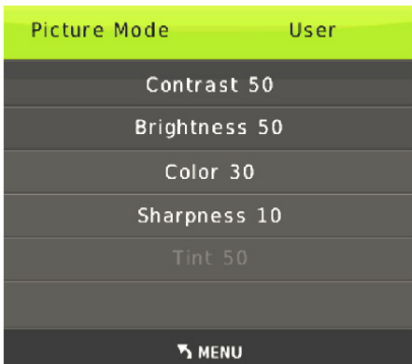
OSD MENU

The switcher provides a powerful OSD operation menu. Press **MENU** button on IR remote to enter in OSD menu, the users can change some settings through the OSD menu.

① **MAIN MENU:** The Main MENU includes Picture mode, Aspect ratio, Screen, EDID switch, Audio setting, network and Software update options.



② **PICTURE:** The Picture MENU adjusts the picture quality.



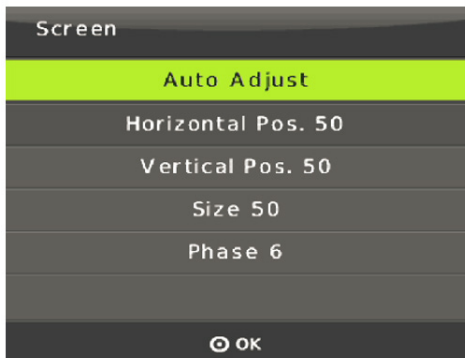
- **Contrast:** 0-100 (default 50)
- **Brightness:** 0-100 (default 50)
- **Color:** 0-60 (default 30)
- **Sharpness:** 0-20 (default 10)
- **Tint:** 0-100 (default 50, for CVBS NTSC format only)

③ **ASPECT RATIO:** The user can adjust picture output Aspect Ratio to 4:3 or 16:9.

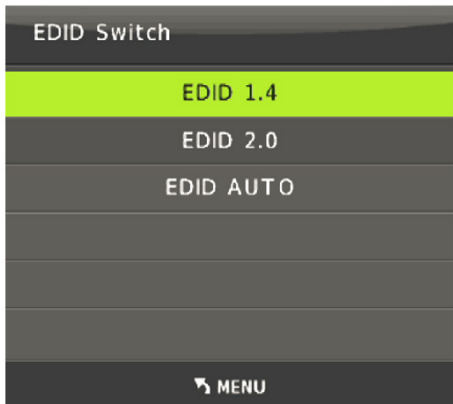


## OSD MENU

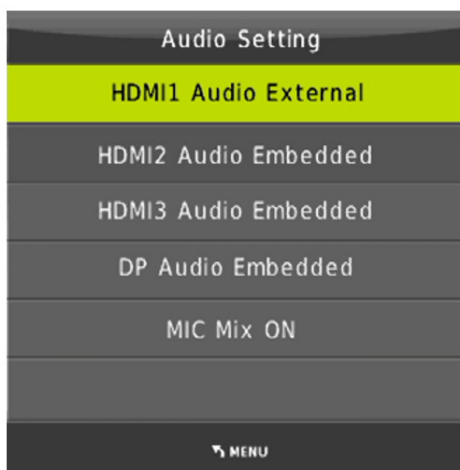
4 **SCREEN:** The Screen MENU adjusts for VGA input only. The user can adjust horizontal, vertical position, size and phase.



5 **EDID:** The EDID MENU adjusts for HDMI and Display port inputs only. EDID1.4 is for HDMI1.4 standard. EDID2.0 is for HDMI2.0 standard, and EDID AUTO is copying the display EDID directly.



6 **AUDIO SETTING:** The Audio Setting MENU select between Embedded or External analog audio to choose the desired audio output port for HDMI and DP input ports. Select MIC mixer mode: ON, AUTO, OFF.

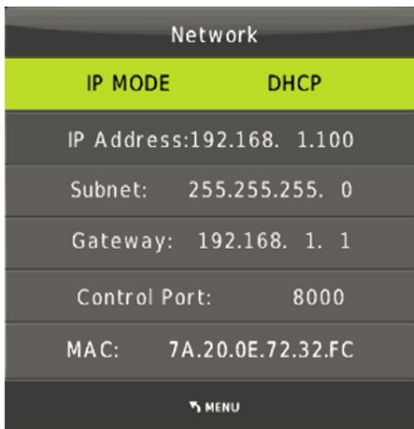


- **MIC Mixer On:** The switcher will mix the source audio and MIC audio to the audio output (HDMI, HDBT, Audio output port).
- **MIC Mixer Auto:** The switcher will reduce the source audio volume automatic when it detects the MIC audio input.
- **MIC Mixer Off:** The switcher will mute the MIC input audio.



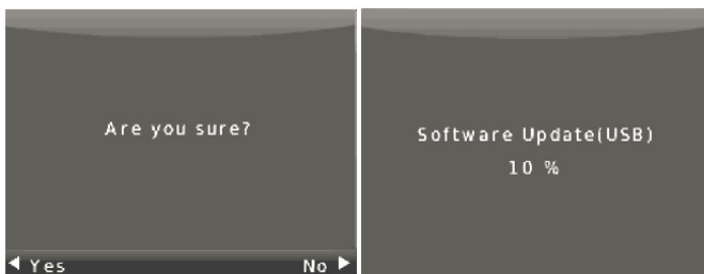
OSD MENU

7 NETWORK: The Network MENU will display the IP address.

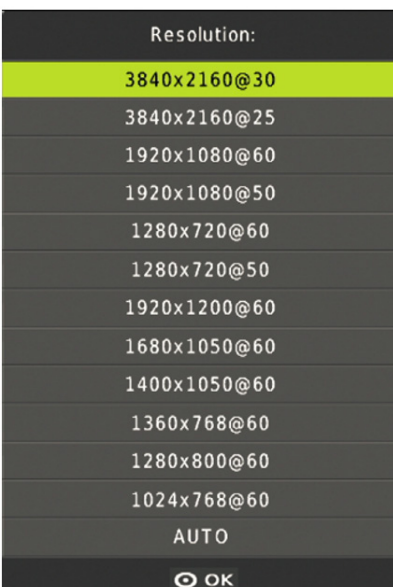


8 SOFTWARE UPDATE: The switcher supports Software Updates via USB flash disk. The procedure is as follows:

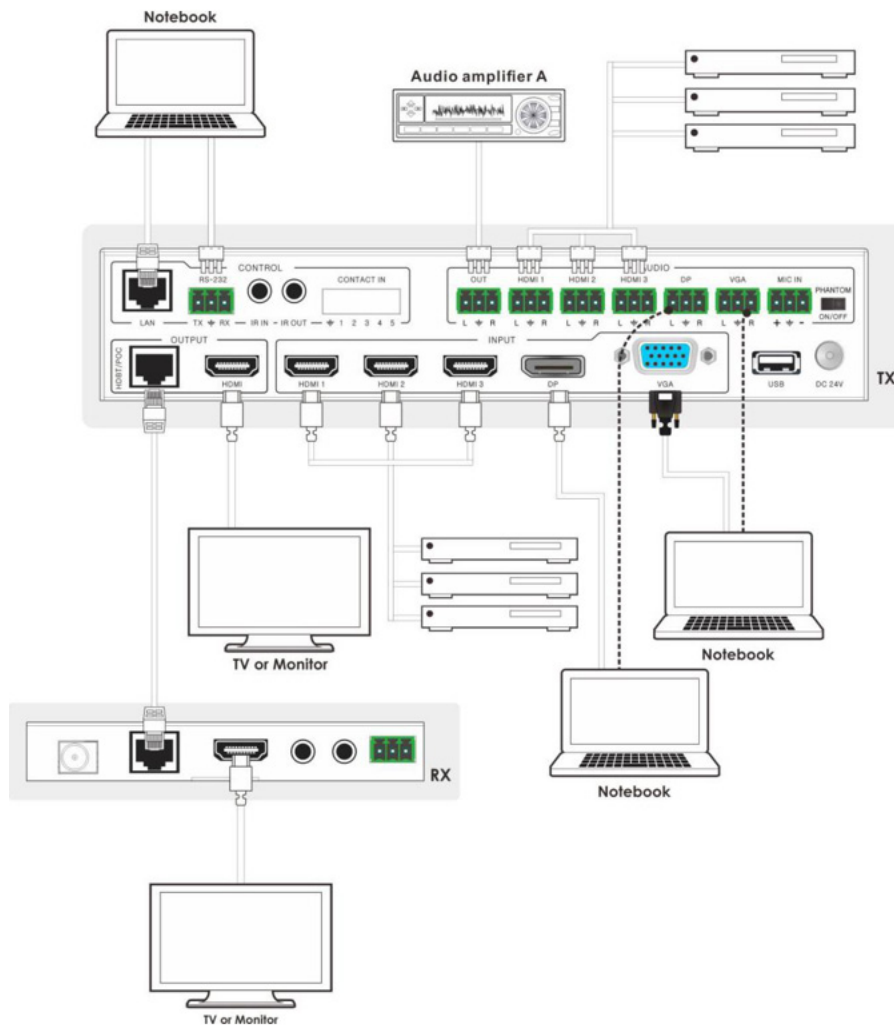
1. Copy the file “MERGE.bin” to the root directory of a USB flash disk. (Make sure the file is copied to the root directory. The “MERGE.bin” file is provided/authorized by our engineering department or from our website)
2. Plug the USB flash disk to the switcher USB port on its rear panel.
3. Press the MENU>software update>YES enters to start the update. The OSD will display the update process.



9 RESOLUTION: The switcher HDMI output resolutions support multiple modes. Press the “RES” button on the IR remote, the resolution menu will be displayed. The user can select suitable resolution for HDTV or monitor. Auto means that the HDMI resolutions based on the EDID information read from the display device.



CONNECTION DIAGRAM



1. Connect HDMI source devices (e.g. Blue-ray DVD) to HDMI input ports of the switcher with HDMI cable. Connect VGA source device (eg. PC/Note-book) to VGA input port of the switcher with a VGA cable.
2. Connect HDMI display device to the HDMI output port of the switcher with a HDMI cable.
3. Connect UTP Cable to the HDBaseT™ receiver.
4. Connect speaker, headphone or specialized amplifier to AUDIO output port of the switcher.
5. Connect control device (e.g. PC) to RS-232 port of the switcher.
6. Connect DC24V power adaptor to the power port and power on.

THIS PAGE IS INTENTIONALLY LEFT BLANK.

PLEASE READ THE FOLLOWING TERMS AND CONDITIONS CAREFULLY BEFORE USING THIS HARDWARE, COMPONENTS AND SOFTWARE PROVIDED BY, THROUGH OR UNDER A-NeuVideo, INC (COLLECTIVELY, THE "PRODUCT"). By using installing or using the Product, you unconditionally signify your agreement to these Terms and Conditions. If you do not agree to these Terms and Conditions, do not use the Product and return the Product to A-NeuVideo, Inc. at the return address set forth on the Product's packing label at your expense. A-NeuVideo, Inc. may modify these Terms and Conditions at anytime, without notice to you. This unit comes with a 3 Year Warranty.

#### **RESTRICTIONS ON USE OF THE PRODUCT**

It is your responsibility to read and understand the installation and operation instructions, both verbal and in writing, provided to you with respect to the Product. You are authorized to use the Product solely in connection with such instructions. Any use of the Product not in accordance with such instructions shall void any warranty pertaining to the Product. Any and all damages that may occur in the use of the Product that is not strictly in accordance with such instructions shall be borne by you and you agree to indemnify and hold harmless A-NeuVideo, Inc. from and against any such damage.

The Product is protected by certain intellectual property rights owned by or licensed to A-NeuVideo. Any intellectual property rights pertaining to the Product are licensed to you by A-NeuVideo, Inc. and/or its affiliates, including any manufacturers or distributors of the Product (collectively, "A-NeuVideo") for your personal use only, provided that you do not change or delete any proprietary notices that may be provided with respect to the Product.

The Product is sold to you and any use of any associated intellectual property is deemed to be licensed to you by A-NeuVideo for your personal use only. A-NeuVideo does not transfer either the title or the intellectual property rights to the Product and A-NeuVideo retains full and complete title to the intellectual property rights therein. All trademarks and logos are owned by A-NeuVideo or its licensors and providers of the Product, and you may not copy or use them in any manner without the prior written consent of A-NeuVideo, which consent may be withheld at the sole discretion of A-NeuVideo.

The functionality and usability of the Product is controlled by A-NeuVideo, Inc. from its offices within the State of Texas, United States of America. A-NeuVideo makes no representation that materials pertaining to the Product are appropriate or available for use in other locations other than the shipping address you provided with respect thereto. You are advised that the Product may be subject to U.S. export controls.

#### **DISCLAIMERS AND LIMITATION OF LIABILITY**

A-NeuVideo may change or modify the Product at any time, from time to time.

THE PRODUCT IS PROVIDED "AS IS" AND WITHOUT WARRANTIES OF ANY KIND EITHER EXPRESS OR IMPLIED. A-NEUVIDEO DOES NOT WARRANT OR MAKE ANY REPRESENTATIONS REGARDING THE USE OR THE RESULTS OF THE USE OF THE PRODUCT'S CORRECTNESS, ACCURACY, RELIABILITY, OR OTHERWISE.

A-NeuVideo has no duty or policy to update any information or statements pertaining to the Product and, therefore, such information or statements should not be relied upon as being current as of the date you use the Product. Moreover, any portion of the materials pertaining to the Product may include technical inaccuracies or typographical errors. Changes may be made from time to time without notice with respect to the Product.

TO THE FULLEST EXTENT PERMISSIBLE PURSUANT TO APPLICABLE LAW, A-NEUVIDEO DISCLAIMS ALL WARRANTIES, EXPRESS OR IMPLIED, INCLUDING, BUT NOT LIMITED TO IMPLIED WARRANTIES OF MERCHANTABILITY, FITNESS FOR A PARTICULAR PURPOSE AND NON-INFRINGEMENT. A-NEUVIDEO DOES NOT WARRANT THE ACCURACY, COMPLETENESS OR USEFULNESS OF ANY INFORMATION WITH RESPECT TO THE PRODUCT. A-NEUVIDEO DOES NOT WARRANT THAT THE FUNCTIONS PERTAINING TO THE PRODUCT WILL BE ERROR-FREE, THAT DEFECTS WITH RESPECT TO THE PRODUCT WILL BE CORRECTED, OR THAT THE MATERIALS PERTAINING THERETO ARE FREE OF DEFECTS OR OTHER HARMFUL COMPONENTS. A-NEUVIDEO WILL USE ITS REASONABLE EFFORTS TO CORRECT ANY DEFECTS IN THE PRODUCT UPON TIMELY WRITTEN NOTICE FROM YOU NOT TO EXCEED 10 BUSINESS DAYS AFTER RECEIPT BY YOU OF THE PRODUCT, BUT YOU (AND NOT A-NEUVIDEO) ASSUME THE ENTIRE COST OF ALL NECESSARY SERVICING, REPAIR AND CORRECTION THAT WAS CAUSED BY YOU UNLESS OTHERWISE AGREED TO IN A SEPARATE WRITING BY A-NEUVIDEO.

UNDER NO CIRCUMSTANCES, INCLUDING, BUT NOT LIMITED TO, NEGLIGENCE, SHALL A-NEUVIDEO BE LIABLE FOR ANY SPECIAL OR CONSEQUENTIAL DAMAGES THAT RESULT FROM THE USE OF, OR THE INABILITY TO USE THE PRODUCT IN ACCORDANCE WITH ITS SPECIFICATIONS, EVEN IF A-NEUVIDEO OR ITS REPRESENTATIVES HAVE BEEN ADVISED OF THE POSSIBILITY OF SUCH DAMAGES. IN NO EVENT SHALL A-NEUVIDEO'S TOTAL LIABILITY TO YOU FROM ALL DAMAGES, LOSSES, AND CAUSES OF ACTION (WHETHER IN CONTRACT, OR OTHERWISE) EXCEED THE AMOUNT YOU PAID TO A-NEUVIDEO, IF ANY, FOR THE PRODUCT.