

ENFORCER®


12VDC Switching CCTV Power Supply

Manual



PS-U0906-PULQ shown

Model Number	Number of Outputs	Total Supply Current	Max. Current per Output
PS-U0406-PULQ ¹ PS-U0406-PTQ	4	6A	2.5A ²
PS-U0906-PULQ ¹ PS-U0906-PTQ	9	6A	2.5A ²
PS-U1806-PULQ ¹ PS-U1806-PTQ	18	6A	2.5A ²
PS-U1812-PULQ ¹ PS-U1812-PTQ	18	12A	2.5A ²
PS-U3612-PULQ ¹ PS-U3612-PTQ	36	12A	2.5A ²

¹UL approved models and includes power cable with NEMA 5—15 plug connector. 

²Positive Temperature Coefficient (PTC) output fuse rating

ENFORCER DC Switching CCTV Power Supply

Features:

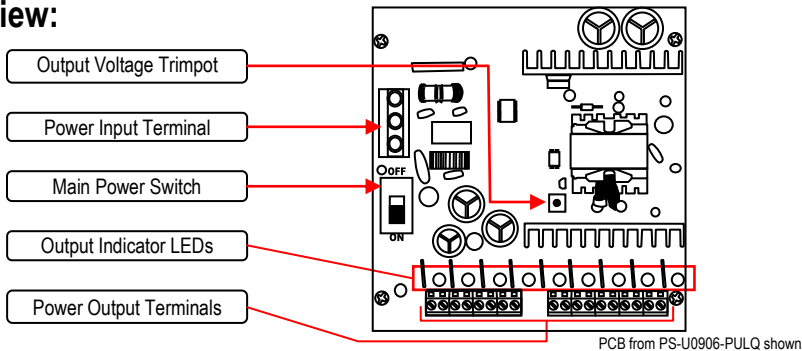
- Universal 100~240 VAC input.
- New lightweight, cost-effective design.
- Improved efficiency.
- Adjustable output to reduce voltage drop.
- Outputs protected with 2.5A PTC¹ fuses.
- Individual output status LEDs.
- Heavy-duty steel case with removable cover.
- Built-in short circuit and overheat protection.

Parts List:	Power supply x1	Cable clamp..... x1	Power cable ²x1
	Plastic bushing..... x1	Cable clamp nut..... x2	Cable tie ³x2
	Enclosure screws..... x2	Manual x1	

Specifications:

	PS-U0406-PULQ PS-U0406-PTQ ⁴	PS-U0906-PULQ PS-U0906-PTQ ⁴	PS-U1806-PULQ PS-U1806-PTQ ⁴	PS-U1812-PULQ PS-U1812-PTQ ⁴	PS-U3612-PULQ PS-U3612-PTQ ⁴
Outputs	4	9	18	18	36
Total supply current	6A			12A	
Max. current / output	2.5A				
Output fuse	PTC ¹				
Output voltage	12.6~13.5 VDC				
Input fuse	Micro fuse 3.15A@250VAC				
Input voltage	100~240 VAC (47~63 Hz)				
Dimensions	10"x7 ³ / ₄ "x3 ⁵ / ₈ " (254x196x92 mm)			12 ¹ / ₈ "x12 ¹ / ₄ "x3 ⁵ / ₈ " (308x311x92 mm)	
Weight (Approx.)	4-lb 7-oz (2.01kg)			7-lb 10-oz (3.45kg)	

Overview:



Installation Notes:

- **ALWAYS TEST OUTPUT VOLTAGE BEFORE CONNECTING DEVICES.**
- Indoor use only. Do not mount the unit where it may be exposed to weather or high humidity.
- For professional installation only.
- Installation must conform to all local laws and building codes.

Installation:

1. Find a suitable location to install the power supply. The power supply should be installed out of sight, and in a place protected from weather and high humidity. The power supply must have adequate ventilation. Insufficient ventilation may cause overheating and damage could result.

¹Positive Temperature Coefficient

²PULQ models only

³4 pcs for 18-output models, 8 pcs for 36-output models

⁴PULQ and PTQ models are identical except PULQ models are UL approved and include a NEMA 5—15 plug power cable. (U)

2. Remove one or more of the power cable knock-outs depending on how connections will be made. Knock-outs are shown in Figure 1 to the right. If desired, use an optional bushing, grommet or another sleeve to protect wires passing through the hole(s).

Figure 1 – Knock-outs

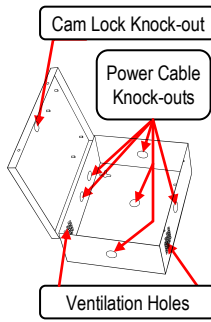
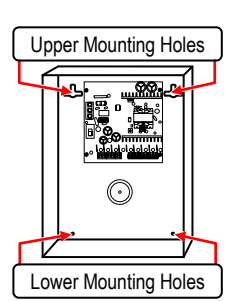


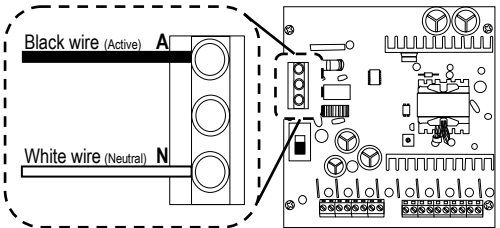
Figure 2 – Mounting



3. If desired, a cam lock (not included) can be installed in the knock-out located in the middle right of the cover of the unit.

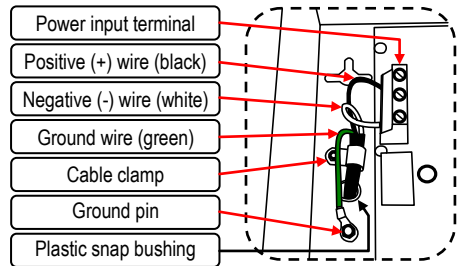
4. Screw the power supply on to the wall or other mounting surface using four 5/32"x1" (4x26 mm) screws and plastic anchors (not included). First, screw in the top two screws and hang the power supply. Then screw in the bottom two screws to fully secure the unit in place.

Figure 3 – Main power cable (PS-Uxx06 series)



5. **PS-Uxx06 series:** Connect the main power cable¹ to the PCB's power input terminal as shown in Figure 3. Connect the green ground wire to the enclosure ground pin using the included nut as shown in Figure 4.

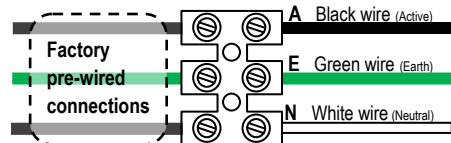
Figure 4 – Connecting power cable (PS-Uxx06 series)



PS-Uxx12 series: Connect the main power cable¹ to the empty terminals of the white terminal block as shown in the connection legend inside the power supply housing and the Figure 5 diagram.

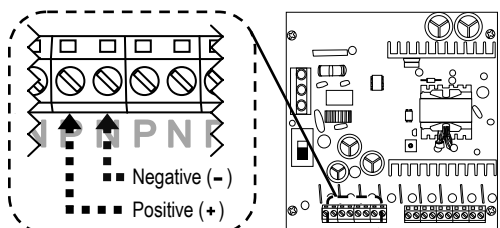
IMPORTANT: The power cable¹ must be secured with the included white plastic cable clamp and nut to the housing. If using the rear power cable port, install the included plastic bushing on the cable port to protect the cable from abrasion.

Figure 5 – Main power cable (PS-Uxx12 series)



6. Connect cameras and other devices to the power outputs, while observing correct polarity as shown in Figure 6. To minimize voltage drop, use 18-gauge or larger wire.

Figure 6 – Connecting power outputs



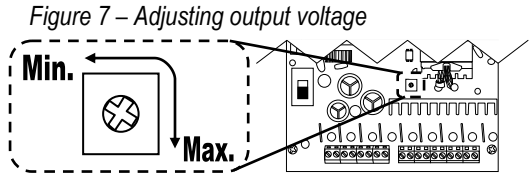
WARNING: Always test output voltage before connecting devices to the power supply. (Continued on page 4)

¹Power cable included with PULQ models only.

ENFORCER DC Switching CCTV Power Supply

7. If voltage drop is large, adjust the output voltage trimpot as shown in Figure 7.

NOTE: The output voltage trimpot changes voltage for all outputs. Test all outputs to ensure voltage does not exceed device specifications.



Also Available from SECO-LARM:

CCTV Power Supplies



PS-D1610-BUQ

CCTV Cameras



EV-2726-NFGQ

DVRs



DR-1 Series

Baluns



EVT-PB1Q

DC Connectors



CA-161T / CA-151R

Voltage Converters & Boosters



ST-HB105-TTQ

WARRANTY This SECO-LARM product is warranted against defects in material and workmanship while used in normal service for a period of one (1) year from the date of sale to the original consumer customer. SECO-LARM's obligation is limited to the repair or replacement of any defective part if the unit is returned, transportation prepaid, to SECO-LARM. This Warranty is void if damage is caused by or attributed to acts of God, physical or electrical misuse or abuse, neglect, repair, or alteration, improper or abnormal usage, or faulty installation, or if for any other reason SECO-LARM determines that such equipment is not operating properly as a result of causes other than defects in material and workmanship. The sole obligation of SECO-LARM, and the purchaser's exclusive remedy, shall be limited to replacement or repair only, at SECO-LARM's option. In no event shall SECO-LARM be liable for any special, collateral, incidental, or consequential personal or property damages of any kind to the purchaser or anyone else.

NOTICE: The information and specifications printed in this manual are current at the time of publication. However, the SECO-LARM policy is one of continual development and improvement. For this reason, SECO-LARM reserves the right to change specifications without notice. SECO-LARM is also not responsible for misprints or typographical errors.

Copyright © 2012 SECO-LARM U.S.A., Inc. All rights reserved. This material may not be reproduced or copied, in whole or in part, without the written permission of SECO-LARM.

SECO-LARM® U.S.A., Inc.

16842 Millikan Avenue, Irvine, CA 92606

Tel: 800-662-0800 / 949-261-2999 Fax: 949-261-7326

Website: www.seco-larm.com

E-mail: sales@seco-larm.com

 PITSW1

MIPS-Uxxxx-PULQ_1211.docx

Order part # 764-507-1%