

iWARE®

iPod Connectivity Solutions



ES₂

Wall-Mount Extender System for iPod

Extend your iPod Connection to Anywhere in Your Home

- Extend the reach of any IntelliControl® ICS or Niles ZR-6 system to an iPod from 2 meters to 100 meters
- Balanced/differential audio to preserve audio quality and reject noise and hum pickup
- Utilizes dual-runs of CAT-5 cabling up to 100m (330')

Specifications Sheet



ES₂

Extend your iPod Connection to Anywhere in Your Home

Wall-Mount Extender System for iPod

Stock Number

FG01574



Features

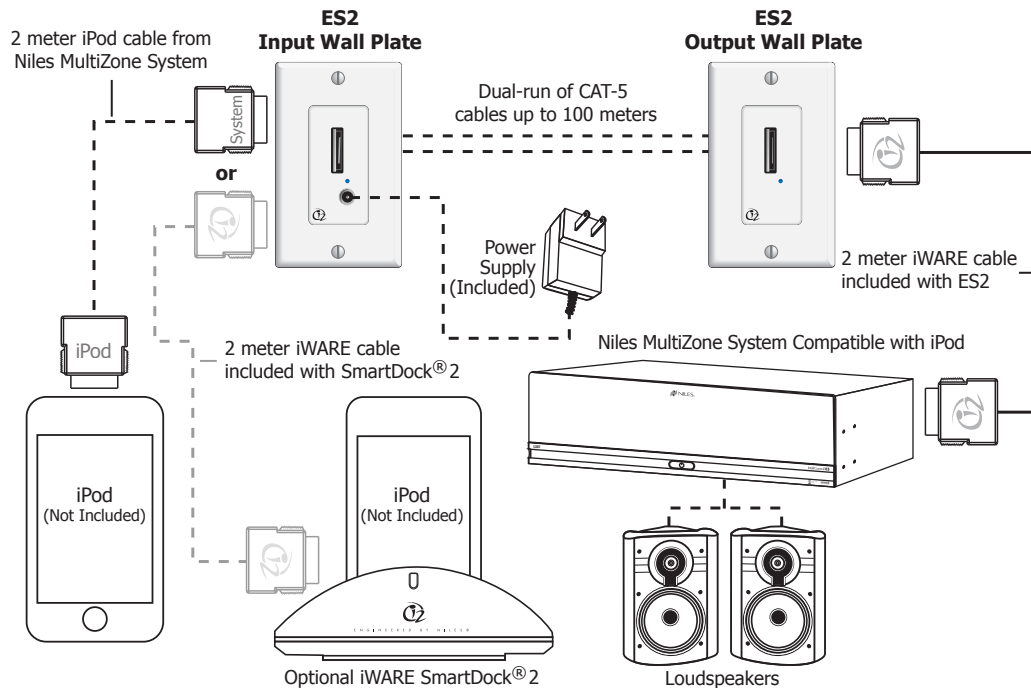
- Extend the reach of any IntelliControl ICS or ZR-6 MultiZone receiver, to an iPod from 2 meters to 100 meters
- Balanced/differential audio to preserve audio quality and reject noise and hum pickup
- LEDs on the input and output wall plates indicate that the 12V power supply is connected and the output wallplate is connected
- Includes power supply and 30-pin cable
- Power connection is available on both the front and back of input plate

Specifications

- **Power:** 12V DC @ 250mA (minimum)
- **Dimensions:** 2.75" W x 4.5" H (7 cm W x 11.43 cm H)
- **Warranty:** Two-year limited
- **Shipping weight:** 1 lb. (.5Kg)

For a complete list of all ES2-compatible iPods, go to www.nilesaudio.com, select iWARE from the products menu, and then select ES2.

ES2 Connection Diagram



When not using a SmartDock2, use the cable included with Niles MultiZone System to connect to the iPod.

ENGINEERED BY NILES.

NILES AUDIO CORPORATION 12331 SW 130 Street, Miami, FL 33186 1-305-238-4373 • 1-800-BUY-HIFI – www.nilesaudio.com