

iWARE[®] ES₂ Extender System



Wall-Mount Extender System for iPod
USER MANUAL

CONGRATULATIONS!

Thank you for choosing the iWARE® ES2 Extender System from Niles Audio Corporation. With proper installation and operation, you should enjoy years of trouble free use.

The ES2 Extender System consists of a pair of wall plates that allow an iPod to be placed up to 100 meters away from an IntelliControl® ICS, or Niles ZR-6 MultiZone Receiver. The input plate has a 30-pin connector for the iPod (must use Niles to iPod cable supplied with your Niles System) and a connection for the power supply. The output plate has a 30-pin connector for connecting to a Niles System. Both plates have two CAT-5 connectors on the back that carry audio, data and other signals between them that allow you to listen to and control your iPod.

Niles manufactures the industry's most complete line of custom installation components and accessories for audio/video systems. To see the complete Niles product assortment, visit us on the Internet at www.nilesaudio.com.

KEY FEATURES

- Extend the reach of a Niles IntelliControl® ICS, or ZR-6 MultiZone receiver, to an iPod from 2 meters to 100 meters
- Balanced/differential audio to preserve audio quality and reject noise and hum pickup
- LEDs on the input wall plate and output wall plate indicate that the 12V power supply is connected and that the output wall plate is connected

PRODUCT OVERVIEW

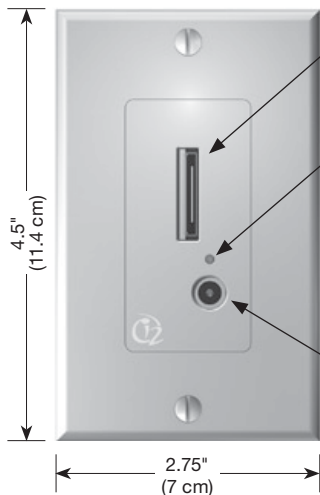
Package Contents

- ES2 input wall plate
- ES2 output wall plate
- Two white Decora® cover plates
- One 12V external power supply
- 2 meter iWARE cable

Specifications

- Power: 12V DC @ 250 mA (Minimum)
- Dimensions:
2.75" W x 4.5" H
(7cm W x 11.4cm H)
- 2-year Limited Warranty

ES2 Input Wall Plate (iPod)



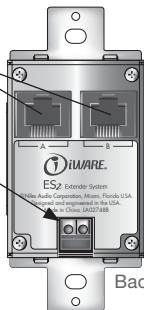
30-Pin Niles Connector
For connecting an iPod
(input plate) and the system
receiver (output plate)

LED

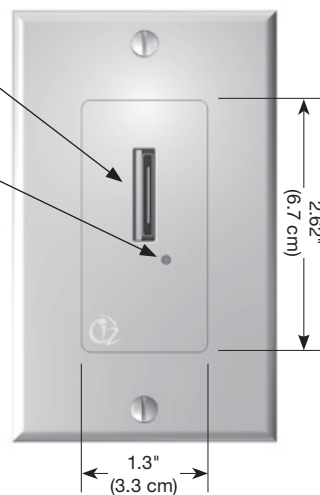
Indicates that the power supply is
plugged in (input plate) and that
a system receiver is connected
(output plate)

**CAT-5
Connectors**

**12V Power
Supply
Connector**

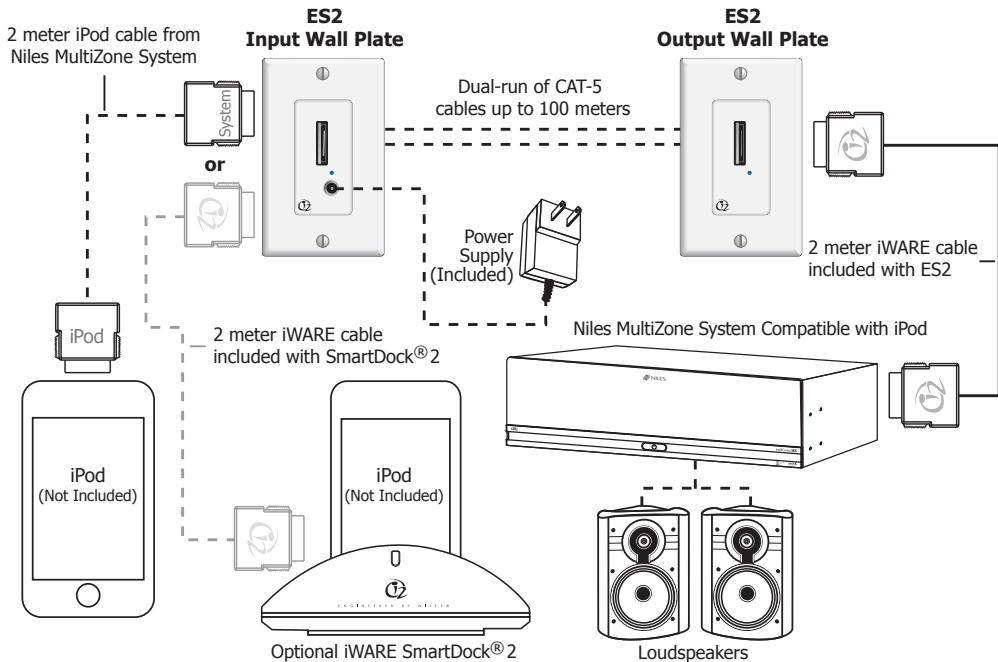


ES2 Output Wall Plate (Niles System)



Back Side

ES2 EXTENDER SYSTEM CONNECTION DIAGRAM



When not using a SmartDock2, use the cable included with your Niles MultiZone or control system. Caution: The 30-Pin Niles connector and 30-Pin iPod connector are not interchangeable. Attempting to force a mismatch may damage the connectors.

USING YOUR ES2 EXTENDER SYSTEM

The iWARE® ES2 Extender System allows you to locate your iPod up to 100 meters from your IntelliControl® ICS system, or a Niles ZR-6 MultiZone Receiver. Prior to performing any work you must determine where both the system and iPod will be located. Between those two points, two lengths of CAT-5 unshielded twisted pair cable must be installed. These two cables may be any length up to 100 meters (but must be the same length) and must be terminated using the EIA/TIA T568A standard.

The input wall plate is different from the output wall plate in that it has an extra connection for the power supply. The input plate and the power supply are to be installed at the iPod end of the system. Install the input and output wall plates taking great care to match the two CAT-5 cable connections at each end. (The two RJ45 jacks are labeled "A" and "B"; Connect the cables A-to-A, and B-to-B.) Connect the power supply to the input wall plate. Optionally, the input wall plate may be powered remotely via the two conductor connector on the back side of the input wall plate (requires 12VDC at 250 mA minimum for power). Connect the output wall plate to the Niles system and the input wall plate to the iPod with the appropriate cable. As an option, you can use the iWARE SmartDock® 2 (sold separately) to hold the iPod and add additional functionality. Please see the manual of that device for operation instructions.

Note: CAT-5 cables must be same length and terminated using the EIA/TIA T568A standard.

LIMITED WARRANTY

NILES AUDIO CORPORATION ("NILES") WARRANTS ITS ACTIVE PRODUCTS TO THE ORIGINAL PURCHASER TO BE FREE OF MANUFACTURING DEFECTS IN MATERIAL AND WORKMANSHIP FOR A PERIOD OF TWO YEARS FROM DATE OF PURCHASE.

THIS WARRANTY IS SUBJECT TO THE FOLLOWING ADDITIONAL CONDITIONS AND LIMITATIONS. THE WARRANTY IS VOID AND INAPPLICABLE IF NILES DEEMS THAT THE PRODUCT HAS BEEN USED OR HANDLED OTHER THAN IN ACCORDANCE WITH THE INSTRUCTIONS PROVIDED BY THE MANUFACTURER, INCLUDING BUT NOT LIMITED TO DAMAGE CAUSED BY ACCIDENT, MISHANDLING, IMPROPER INSTALLATION, ABUSE, NEGLIGENCE, OR NORMAL WEAR AND TEAR, OR ANY DEFECT CAUSED BY REPAIR TO THE PRODUCT BY ANYONE OTHER THAN NILES OR AN AUTHORIZED NILES DEALER.

TO OBTAIN WARRANTY SERVICE, TAKE THE UNIT TO THE NEAREST AUTHORIZED NILES DEALER, WHO WILL TEST THE PRODUCT AND IF NECESSARY, FORWARD IT TO NILES FOR SERVICE. IF THERE ARE NO AUTHORIZED NILES DEALERS IN YOUR AREA, YOU MUST WRITE TO NILES AND INCLUDE YOUR NAME, MODEL AND SERIAL NUMBER OF YOUR UNIT, ALONG WITH A BRIEF DESCRIPTION OF THE PROBLEM. A FACTORY RETURN AUTHORIZATION NUMBER WILL BE SENT TO YOU. DO NOT RETURN ANY UNIT WITHOUT FIRST RECEIVING WRITTEN AUTHORIZATION AND SHIPPING INSTRUCTIONS FROM NILES.

IF THE ABOVE CONDITIONS ARE MET, THE PURCHASER'S SOLE REMEDY SHALL BE TO RETURN THE PRODUCT TO NILES, IN WHICH CASE NILES WILL REPAIR OR REPLACE, AT ITS SOLE OPTION, THE DEFECTIVE PRODUCT WITHOUT CHARGE FOR PARTS OR LABOR. NILES WILL RETURN A UNIT REPAIRED OR REPLACED UNDER WARRANTY BY SHIPPING SAME BY ITS USUAL SHIPPING METHOD FROM THE FACTORY (ONLY) AT ITS EXPENSE WITHIN THE UNITED STATES OF AMERICA.

THERE ARE NO OTHER WARRANTIES, INCLUDING WITHOUT LIMITATION, EITHER EXPRESS OR IMPLIED WARRANTIES OF MERCHANTABILITY OR FITNESS FOR A PARTICULAR PURPOSE, WITH RESPECT TO THE PRODUCT.

REPAIR OR REPLACEMENT AS PROVIDED UNDER THIS WARRANTY IS THE EXCLUSIVE REMEDY OF THE CONSUMER/PURCHASER. NILES SHALL NOT BE RESPONSIBLE FOR ANY INCIDENTAL OR CONSEQUENTIAL DAMAGES EXCEPT TO THE EXTENT PROVIDED (OR PROHIBITED) BY APPLICABLE LAW.

SOME STATES DO NOT ALLOW THE EXCLUSION OR LIMITATION OF INCIDENTAL OR CONSEQUENTIAL DAMAGES, SO THE ABOVE LIMITATION MAY NOT APPLY TO YOU. THIS WARRANTY GIVES YOU SPECIFIC LEGAL RIGHTS, AND YOU MAY ALSO HAVE OTHER RIGHTS WHICH VARY FROM STATE TO STATE.

FOR THE NAME OF YOUR NEAREST AUTHORIZED NILES DEALER CONTACT:
NILES AUDIO CORPORATION, P.O. BOX 160818, MIAMI, FLORIDA 33116-0818.

Please fill in your product information and retain for your records.

Model ES2 Serial No. _____ Purchase Date _____

ES2 Extender System User Manual

Model Purchased ES2 Serial Number _____

Date Purchased _____ Dealer Name and Location _____

Dr. Miss Mr. Mrs. Ms.

Name _____ Address _____

City _____ State _____ Zip _____ Tel () _____

Please take a moment to fill out our warranty registration card. The information helps us to get to know you better and develop the products you want

Age: <input type="radio"/> Under 25 <input type="radio"/> 25-34 <input type="radio"/> 35-44 <input type="radio"/> 45-54 <input type="radio"/> 55 & over	Musical tastes: (Please check all that apply) <input type="radio"/> Alternative <input type="radio"/> Classical <input type="radio"/> Country <input type="radio"/> Jazz <input type="radio"/> New Age <input type="radio"/> Popular <input type="radio"/> R&B <input type="radio"/> Rock <input type="radio"/> Other _____	What magazines do you read? 1. _____ 2. _____ 3. _____	Do you . . . ? <input type="radio"/> Own a House. If yes, how many square feet? <input type="radio"/> Own a Town House/Condominium/Co-op <input type="radio"/> Rent an Apartment <input type="radio"/> Rent a House
Income: <input type="radio"/> Under \$24,999 <input type="radio"/> \$25,000-\$44,999 <input type="radio"/> \$45,000-\$74,999 <input type="radio"/> \$75,000-\$99,999 <input type="radio"/> \$99,999-\$129,999 <input type="radio"/> Over \$130,000	How did you hear about Niles? <input type="radio"/> Architect/Developer <input type="radio"/> Custom Installer <input type="radio"/> Direct Mail <input type="radio"/> Friend/Family <input type="radio"/> In-Store Display <input type="radio"/> Interior Designer <input type="radio"/> Magazine Ad <input type="radio"/> Mail-Order Catalog <input type="radio"/> Newspaper Ad <input type="radio"/> Product Brochure <input type="radio"/> Product Review <input type="radio"/> Retail Salesperson <input type="radio"/> E-Tailer	Who will install the product? <input type="radio"/> Custom Installer <input type="radio"/> Electrician <input type="radio"/> Friend <input type="radio"/> Myself <input type="radio"/> Builder	Are you interested in receiving literature on other Niles products? <input type="radio"/> Yes <input type="radio"/> No
Occupation: <input type="radio"/> Arts/Entertainment <input type="radio"/> Business Owner <input type="radio"/> Engineer <input type="radio"/> Finance/Accounting <input type="radio"/> General Office <input type="radio"/> Management <input type="radio"/> Professional <input type="radio"/> Sales/Marketing <input type="radio"/> Student <input type="radio"/> Tradesperson	Which factor(s) influenced the purchase of your Niles product? (Please check all that apply) <input type="radio"/> Ease of Use <input type="radio"/> Price/Value <input type="radio"/> Product Features <input type="radio"/> Quality/Durability <input type="radio"/> Reputation/Brand <input type="radio"/> Style/Appearance <input type="radio"/> Warranty	Are there products/capabilities that you would like to see introduced? _____ _____ _____	

CUSTOMER SERVICE AND TECHNICAL SUPPORT

BY PHONE (IN USA AND CANADA)

1-800-BUY-HIFI (289-4434)

BY PHONE (ALL OTHER COUNTRIES)

1-305-238-4373

CUSTOMER SERVICE HOURS

8:00 AM to 5:30 PM ET

TECHNICAL SUPPORT HOURS

8:00 AM to 7:00 PM ET

ON THE WEB

www.nilesaudio.com

EMAIL TECHNICAL SUPPORT

techsupport@nilesaudio.com

EMAIL FOR PRODUCT SUGGESTIONS

productsuggestions@nilesaudio.com

©2009 Niles Audio Corporation 12331 S.W. 130 Street, Miami, FL 33186. All rights reserved. Niles, the Niles logo, iWARE, the iWARE logo, and SmartDock are registered trademarks of Niles Audio Corporation. Niles reserves the right to change specifications, descriptions and prices without notice. The technical and other information contained herein is not intended to set forth all technical and other specifications. Designed and engineered in the USA. DS00677C

E N G I N E E R E D B Y

