

# AUDIO STREAMING PLAYER

# ASP-100



● POWER

[www.inter-m.com](http://www.inter-m.com)  
 MADE IN KOREA

● NETWORK

● ON AIR

● OPERATION

● DHCP

DC 12V , 500mA ▶

FACTORY RESET ▶

AUDIO OUTPUT ▶ R  
L

STATIC  
 DHCP

NETWORK ▶

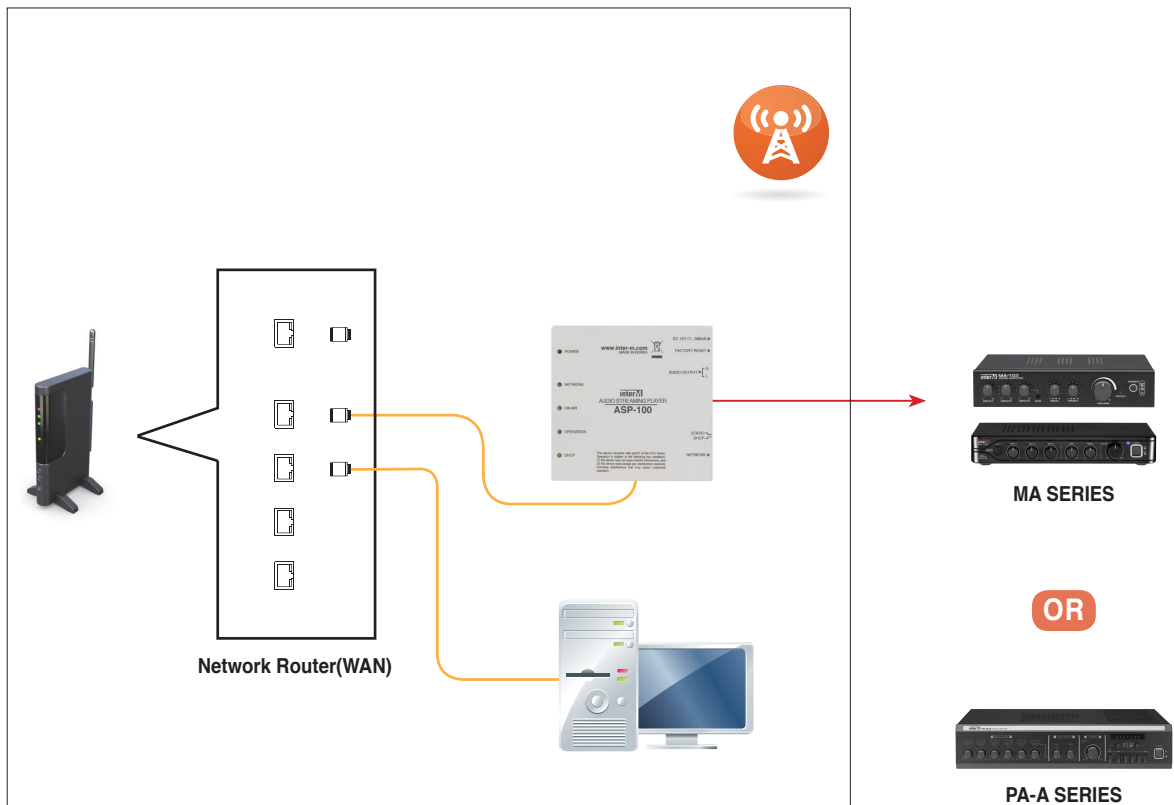
**interM**  
 AUDIO STREAMING PLAYER  
**ASP-100**

This device complies with part 15 of the FCC Rules. Operation is subject to the following two conditions:  
 (1) this device may not cause harmful interference, and  
 (2) this device must accept any interference received, including interference that may cause undesired operation.

● DHCP

NETWORK ▶

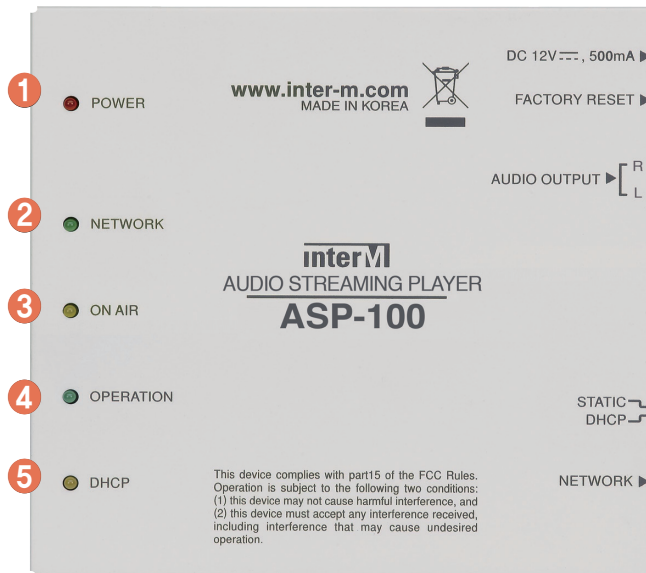
ASP-100 is a device for receiving stream broadcasting through network. You can play BGM without limitation of capacity or space, because you can play the sound source transmitted in real time without downloading or saving the sound source. In addition, web page GUI allows users to easily control streaming channels and volumes, and the system can be easily set up as well.



## FEATURES

- Streaming channel select, playback/stop, volume control via webpage
- Security control(password/log setting) via webpage
- System check schedule setting and system restoration via webpage
- Broadcast/Network status check via LED  
(Power/Network/On Air/Operation/DHCP)
- Selectable Dynamic IP (DHCP) and Static IP (STATIC)
- Keep accurate time by synchronizing time with Internet
- Continuous streaming playback via redundancy setting and buffering management
- RCA audio output terminal
- Factory reset button (Restoration)

## FRONT/REAR PANEL



- ❶ POWER LED (RED)
- ❷ NETWORK LED (GREEN)
- ❸ ON AIR LED (ORANGE)
- ❹ OPERATION LED (GREEN)
- ❺ DHCP LED (ORANGE)



- ❶ NETWORK PORT
- ❷ IP SETTING SELECT SWITCH (DHCP/STATIC)
- ❸ AUDIO OUTPUT (L/R)
- ❹ FACTORY RESET SWITCH
- ❺ DC INPUT TERMINAL

## SPECIFICATIONS

Data Communication	
Communication Type	NETWORK
Network Port	10/100Mbps
Output Audio Characteristics	
Output Level @-10dBFs Play	14dBu
S/N	More than 65dB
THD	Less than 0.1%
Operating Temperature	0°C ~ 40°C
Power Source	DC 12V
Power Consumption	3 W
Weight (set)	0.46kg/1.0lb
Dimension (set)	138.3(W) x 132.7(H) x 28.6(D)mm/ 5.4(W) x 5.2(H) x 1.1(D)in



### Inter-M Corp. (IMK)

719, Dobong-ro, Dobong-gu, Seoul, Korea  
Overseas Sales Team

Tel\_ +82-2-2289-8141~7 Fax\_ +82-2-2289-8149 E-mail\_ overseas@inter-m.com

[www.inter-m.com](http://www.inter-m.com)

※ Design and specification are subject to be changed for the improvement of product quality without pre notice.

2017. 5. V1